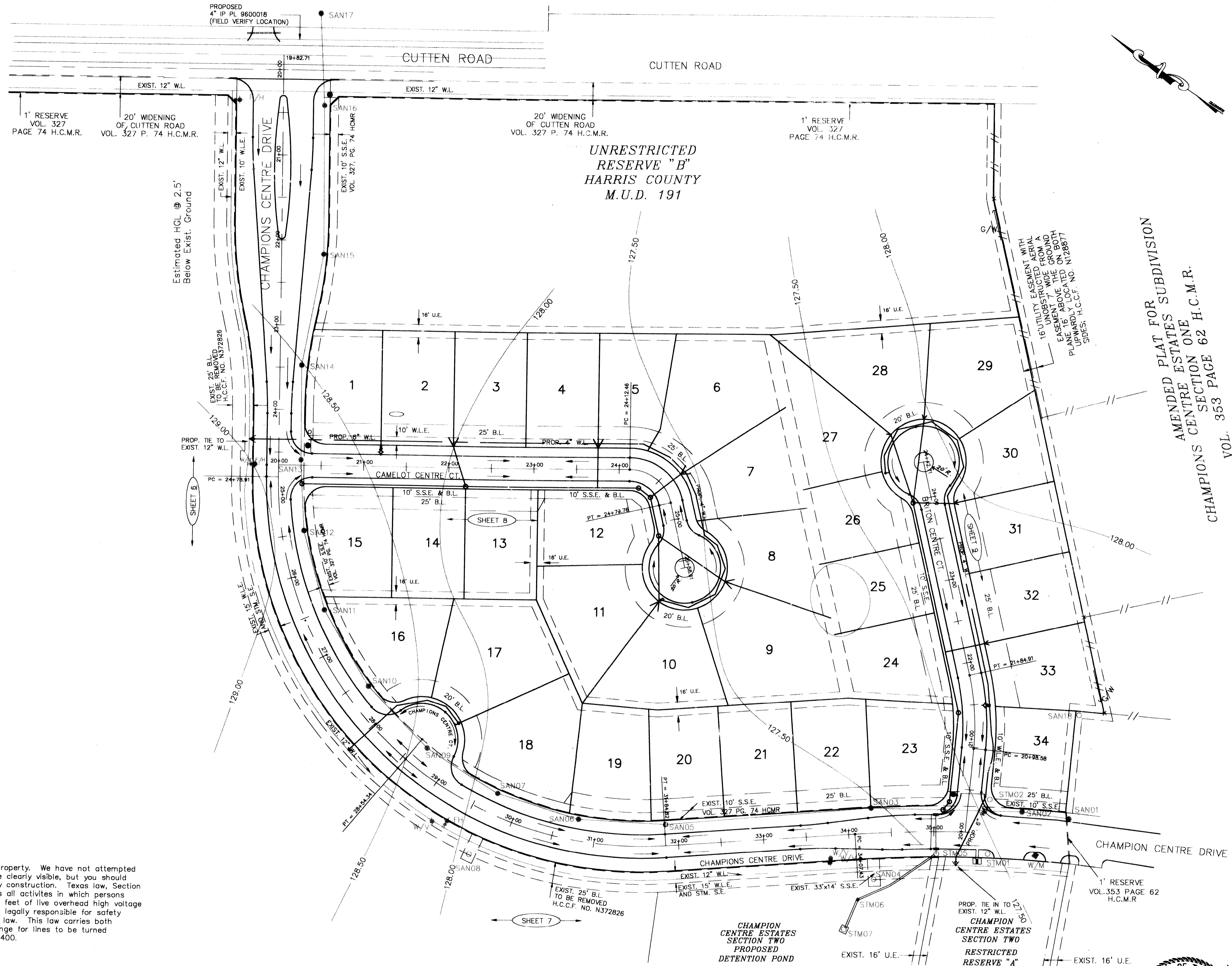


UNRESTRICTED
RESERVE "A"



WARNING
Overhead lines may exist on the property. We have not attempted to mark those lines since they are clearly visible, but you should locate them prior to beginning any construction. Texas law, Section 752, Health & Safety Code, forbids all activities in which persons or things MAY come within six (6) feet of live overhead high voltage lines. Contractors and owners are legally responsible for safety of construction workers under this law. This law carries both criminal and civil liability. To arrange for lines to be turned off or moved, call H.I.&P at 228-7400.

FLOOD PLAIN NOTE:
THIS TRACT IS IN ZONE "X" AS PER FEMA FLOOD INSURANCE RATE MAP PANEL NO. 482010090G, HARRIS COUNTY, TX REVISED SEPT. 28, 1990. ZONE "X" IS DESCRIBED AS BEING OUTSIDE THE 500 YEAR FLOOD PLAIN.

BENCH MARK

BENCH MARK: NGS STAMPED 11.16 1971
BRASS DISK AT CENTERLINE OF H.I. & P. TOWER
1ST TOWER NORTH OF F.M. 1960
ELEVATION: 126.89 - 1973 ADJ.

LEGEND

- UNDERGROUND DISTRIBUTION CABLE
- TERMINAL POLE
- STREET LIGHT ON STEEL STANDARD
- UNDERGROUND STREET LIGHT CABLE
- EXIST. CONTOURS
- EXIST. WATER LINE
- EXIST. GATE VALVE & BOX
- EXIST. FLUSHING VALVE
- EXIST. PLUG & BLOWOFF
- EXIST. SANITARY SEWER LINE & MANHOLE
- EXIST. STORM SEWER LINE & MANHOLE
- EXIST. INLET
- RT-1 (STOP SIGN)
- SHEET REFERENCE
- PROP. WATER LINE
- PROP. GATE VALVE & BOX
- PROP. FLUSHING VALVE
- PROP. PLUG & BLOWOFF
- PROP. SANITARY SEWER LINE & MANHOLE

AMENDED PLAT FOR SUBDIVISION
CHAMPIONS CENTRE ESTATES
SECTION ONE
HARRIS COUNTY
VOL. 353 PAGE 62 H.C.M.R.

Rev.	Date	Description	App.

PRIVATE UTILITY LINES SHOWN	
ENXET, INC.	5/21/96
SOUTHWESTERN BELL TELEPHONE CO.	5-21-96
HOUSTON LIGHTING & POWER CO.	7-26-95

CITY OF HOUSTON DEPARTMENT OF PUBLIC WORKS & ENGINEERING ENGINEERING, CONSTRUCTION AND REAL ESTATE GROUP	
SECTION APPROVALS	
WATER DESIGN	TRAFFIC AND SIGNAL DESIGN
WASTEWATER DESIGN	STREET, BRIDGE AND RIGHT-OF-WAY DESIGN
STORM SEWER DESIGN	CONSTRUCTION

OTHER DEPARTMENTS	
PLANNING AND DEVELOPMENT	SPONSOR DEPARTMENT

CITY ENGINEER	DATE
DIRECTOR OF PUBLIC WORKS AND ENGINEERING	DATE

SUBMITTED:	DESIGNED BY: TIM
SCALE: 1" = 60'	DRAWN BY: TIM
DATE: MARCH 1996	SHEET NO. 2 OF 17 SHEETS
SURVEY BY:	CITY OVERALL DWG NO.
JOB NO: 420-U	

H.C.M.U.D. NO. 191
WATER AND SANITARY OVERALL LAYOUT

PROVIDENT ENGINEERS, INC.
12200 N.W. FRWY, Suite 210
Houston, Texas 77092

