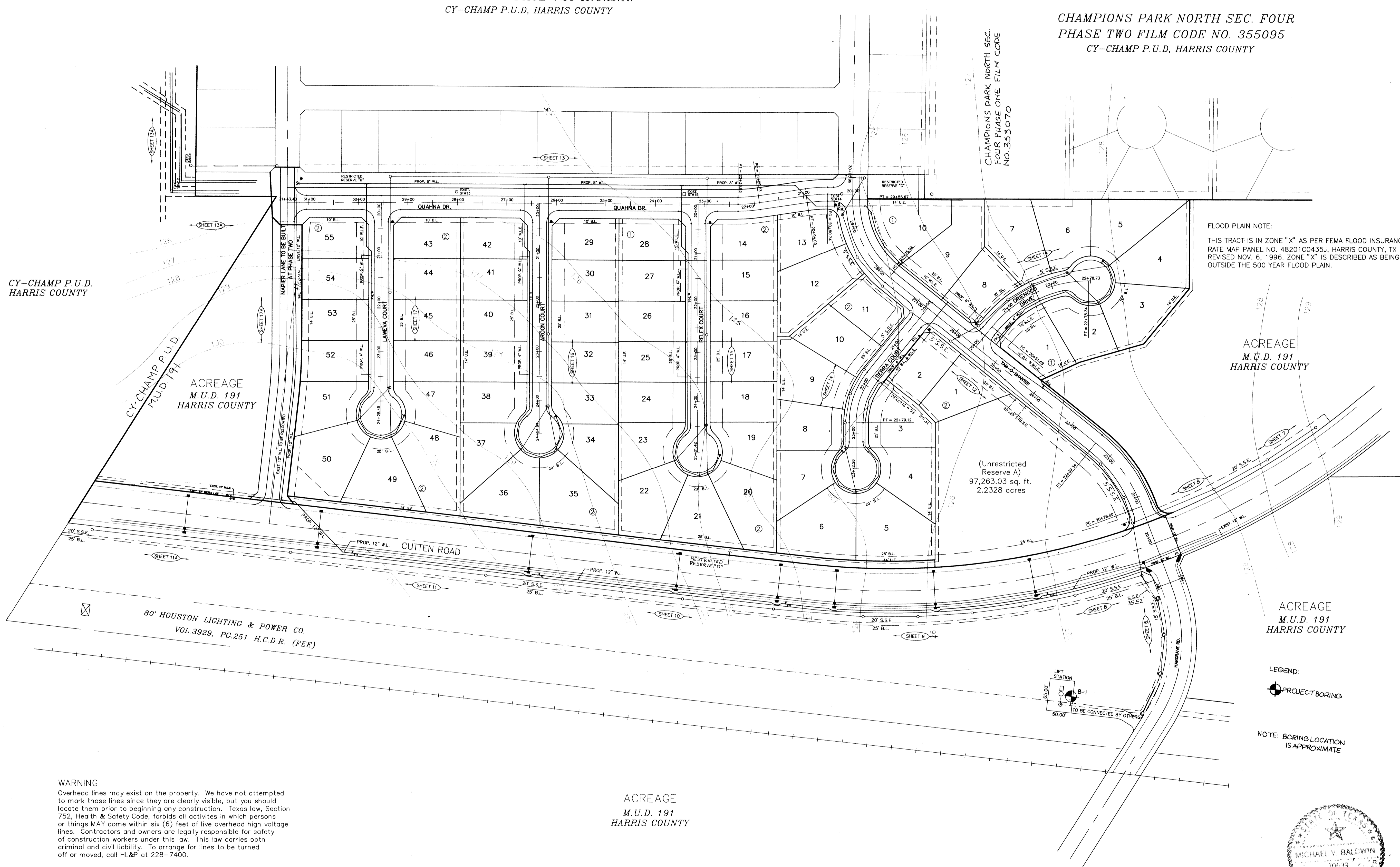


CHAMPIONS RACQUET CLUB SEC. TWO
 VOLUME 274 PAGE 129 H.C.M.R.
 CY-CHAMP P.U.D, HARRIS COUNTY

CHAMPIONS PARK NORTH SEC. FOUR
 PHASE TWO FILM CODE NO. 355095
 CY-CHAMP P.U.D, HARRIS COUNTY



FLOOD PLAIN NOTE:
 THIS TRACT IS IN ZONE "X" AS PER FEMA FLOOD INSURANCE RATE MAP PANEL NO. 48201C0435J, HARRIS COUNTY, TX REVISED NOV. 6, 1996. ZONE "X" IS DESCRIBED AS BEING OUTSIDE THE 500 YEAR FLOOD PLAIN.

BENCH MARK

BENCH MARK: NATIONAL GEODETIC SURVEY MARKER
 Y1216, 1973 ADJ., ELEV = 125.994
 Y1216, 1978 ADJ., ELEV = 125.406
 Y1216, 1988 ADJ., ELEV = 123.94 ADJUSTMENT USED FOR CUTTEN ROAD.

ELEVATIONS SHOWN HEREON ARE BASED ON 1973 ADJUSTMENT.

TBM#1: TOP OF CURB AT CENTERLINE INLET NORTH SIDE OF TOURNAMNET DRIVE AT CENTERLINE QUEENSCUB DRIVE ELEV. = 114.69

LEGEND

- UNDERGROUND DISTRIBUTION CABLE
- TERMINAL POLE
- STREET LIGHT ON STEEL STANDARD
- UNDERGROUND STREET LIGHT CABLE
- Exist. Contours
- Exist. Water Line
- Exist. Gate Valve & Box
- Exist. Flushing Valve
- Exist. Plug & Blowoff
- Exist. Sanitary Sewer Line & Manhole
- Exist. Storm Sewer Line & Manhole
- Exist. Inlet
- R1-1 (STOP SIGN)
- SHEET REFERENCE
- PROP. WATER LINE
- PROP. GATE VALVE & BOX
- PROP. FLUSHING VALVE
- PROP. PLUG & BLOWOFF
- PROP. SANITARY SEWER LINE & MANHOLE

CY-CHAMP P.U.D.
 HARRIS COUNTY

ACREAGE
 M.U.D. 191
 HARRIS COUNTY

ACREAGE
 M.U.D. 191
 HARRIS COUNTY

(Unrestricted Reserve A)
 97,263.03 sq. ft.
 2.2328 acres

80' HOUSTON LIGHTING & POWER CO.
 VOL. 3929, PG. 251 H.C.D.R. (FEE)

LEGEND
 PROJECT BORING

NOTE: BORING LOCATION IS APPROXIMATE

ACREAGE
 M.U.D. 191
 HARRIS COUNTY

WARNING
 Overhead lines may exist on the property. We have not attempted to mark those lines since they are clearly visible, but you should locate them prior to beginning any construction. Texas law, Section 752, Health & Safety Code, forbids all activities in which persons or things MAY come within six (6) feet of live overhead high voltage lines. Contractors and owners are legally responsible for safety of construction workers under this law. This law carries both criminal and civil liability. To arrange for lines to be turned off or moved, call HL&P at 228-7400.

NOTE:
 ALL DRIVEWAYS WILL BE LOCATED TO AVOID EXISTING CURB INLETS STRUCTURES.

Rev.	Date	Description	App.

PRIVATE UTILITY LINES SHOWN

ENTEX, INC.
SOUTHWESTERN BELL TELEPHONE CO. Valid for One Year Only
HOUSTON LIGHTING & POWER CO. Approval Only for Crossing Underground Ductlines Unless Noted. Valid at Time of Review Only.

CITY OF HOUSTON
 DEPARTMENT OF PUBLIC WORKS & ENGINEERING
 ENGINEERING, CONSTRUCTION AND REAL ESTATE GROUP

SECTION APPROVALS

<i>Mike Mats</i> 12-9-97 WATER ENGINEERING	TRAFFIC AND SIGNAL ENGINEERING
<i>Mike Mats</i> 1-9-98 WASTEWATER ENGINEERING	STREET & BRIDGE ENGINEERING
<i>Steve</i> 12-27-97 STORM SEWER ENGINEERING	CONSTRUCTION

OTHER DEPARTMENTS

PLANNING AND DEVELOPMENT	SPONSOR DEPARTMENT
<i>Dee Cho</i> 1/15/98 CITY ENGINEER	DATE
<i>James M. O'D</i> 1-16-98 DIRECTOR OF PUBLIC WORKS AND ENGINEERING	DATE
SUBMITTED:	DESIGNED BY: TIM
SCALE: H: 1" = 100'	DRAWN BY: TIM
DATE: AUGUST 1997	SHEET NO. 2 OF 27 SHEETS
SURVEY BY:	CITY DWG. NO:
F B NO:	



M.U.D. 191
SANITARY SEWER AND WATER OVERALL LAYOUT

PEI PROVIDENT ENGINEERS, INC.
 11241 RICHMOND, SUITE E107
 HOUSTON, TEXAS 77082