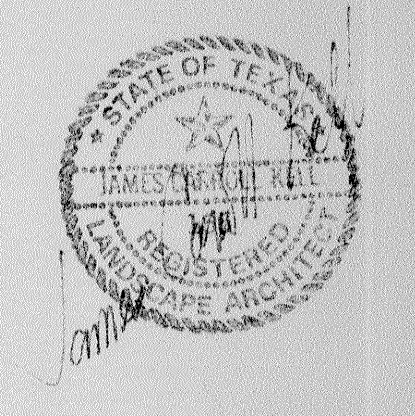


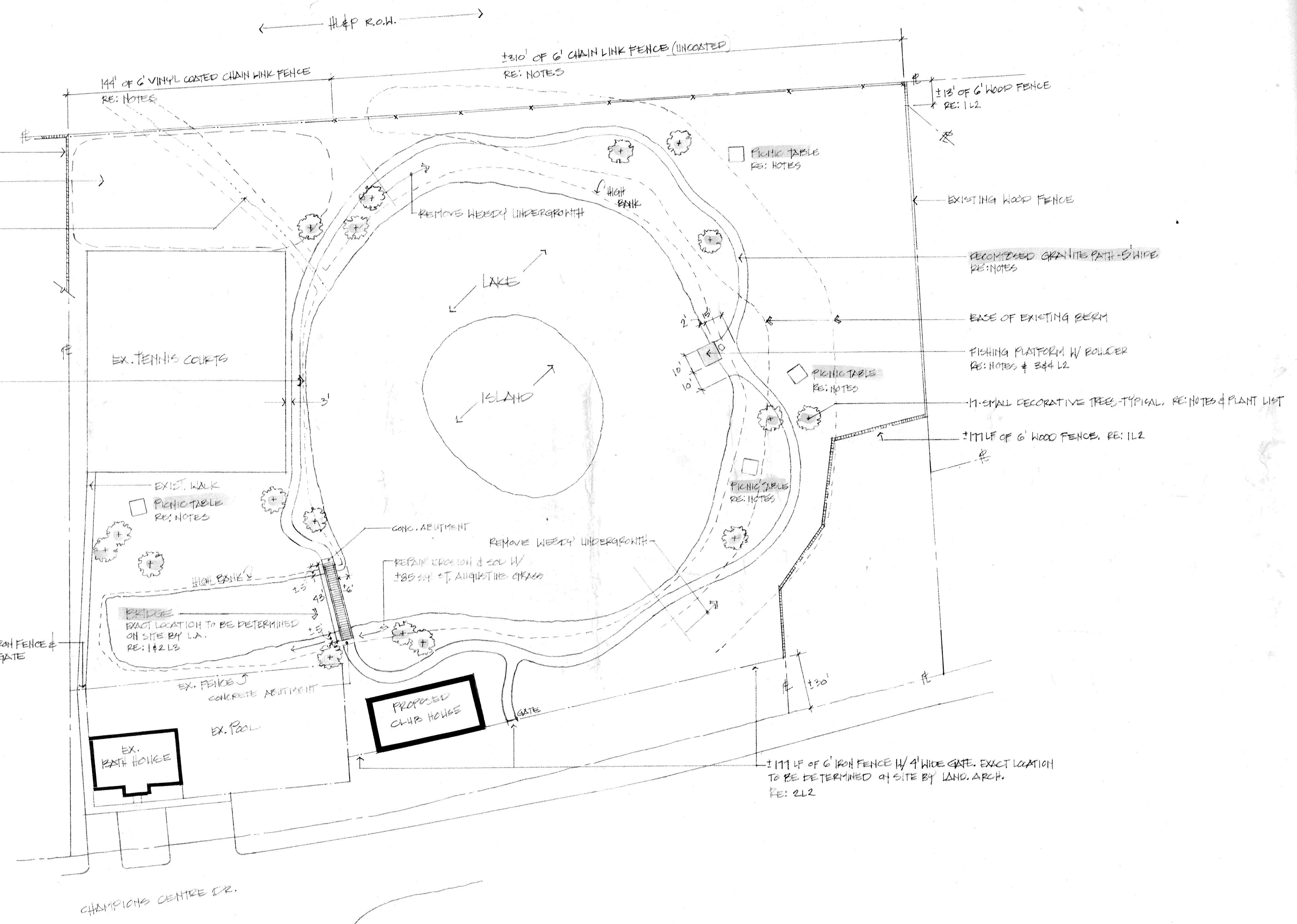
Site Development for  
**Champions Centre Estates**  
 Recreation Center



Site Plan

L1 of 4

JOB CODE: CHAMPIONS-L  
 DRAWN BY: JCK  
 DATE: 8-1-91  
 REVISIONS:



NOTES:

- Fine Grading:** Fine grade area indicated to a smooth evenly sloping surface to improve drainage flow to existing swale and in preparation for hydromulching.
- Underbrush cleanout:** Remove weedy shrubby growth from forested area as shown.
- Vinyl-Coated Chain Link Fence:** To be 6' high, 9 gauge galvanized steel, 1-5/8" diameter top rails, 2" diameter line posts @ 10' o.c., 2-5/8" end posts, points top and bottom. All metal members to be green vinyl coated.
- Standard Chain Link Fence:** To be 6' high, 9 gauge galvanized steel, 1-5/8" diameter top rails, 2" diameter line posts @ 10' o.c., 2-5/8" end posts, points top and bottom.
- Decomposed Granite Path:** 5' wide, excavate to 3" depth, roller compacted depth of granite 3" at edges & 4-1/2" depth at center, top surface crowned 1-1/2" in center, cement stabilized compacted earth base, no edger. Center line to be located on-site by Landscape Architect.
- Picnic Tables (4):** To be manufactured by Little Tikes Commercial Play Systems, Inc., #264-4XR, 4' square table with steel pedestal, clear all heart Redwood top and seats, powder coated paint finish. Install pedestal in concrete collar per manufacturer's instructions. Specific locations to be determined on-site by Landscape Architect.
- Fishing Platform:** Specific location to be determined on-site by Landscape Architect. Limestone boulder for step is to be selected at source by Landscape Architect: approximate size = 2 tons
- Small Decorative Trees:** Specific locations to be determined on-site by Landscape Architect.
- Hydromulch:** Apply Common Bermuda Grass seed with a hydromulching machine at 3 lbs/1000 s.f. in a wood fiber slurry (not shredded paper). Reseed as necessary to obtain an even stand of grass.

PLANT LIST

QTY	BOTANICAL NAME	COMMON NAME	SIZE	ROOT CONDITION
<b>TREES</b>				
7	Cercis canadensis	Redbud	15 gallon	Container
2	Chionanthus virginicus	Fringetree	15 gallon	Container
3	Ilex decidua	Poosumhaw	15 gallon	Container
3	Rhus lanceolata	Prairie Flameleaf Sumac	15 gallon	Container
2	Viburnum rufidulum	Rusty Blackhaw Viburnum	15 gallon	Container
<b>GRASS</b>				
85 sy	Stenotaphrum secundatum	St. Augustine Grass	solid sod	
10,000 sf	Cynodon Dactylon	Common Bermuda Grass	seed	

