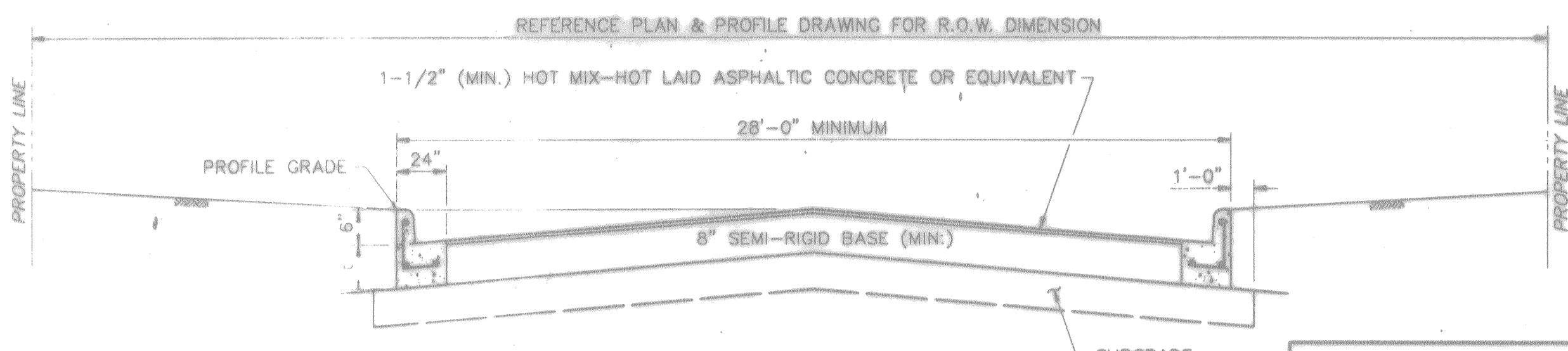


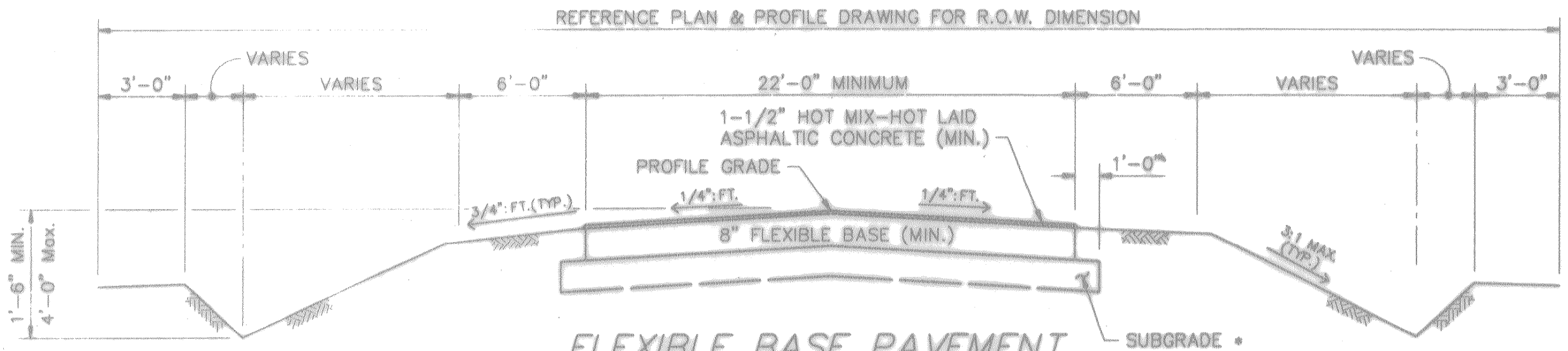
**CONCRETE PAVEMENT CURB & GUTTER SECTION**  
N.T.S.

NOTE: PAVEMENT SECTIONS TO BE LOCATED IN CENTER OF R-0-W



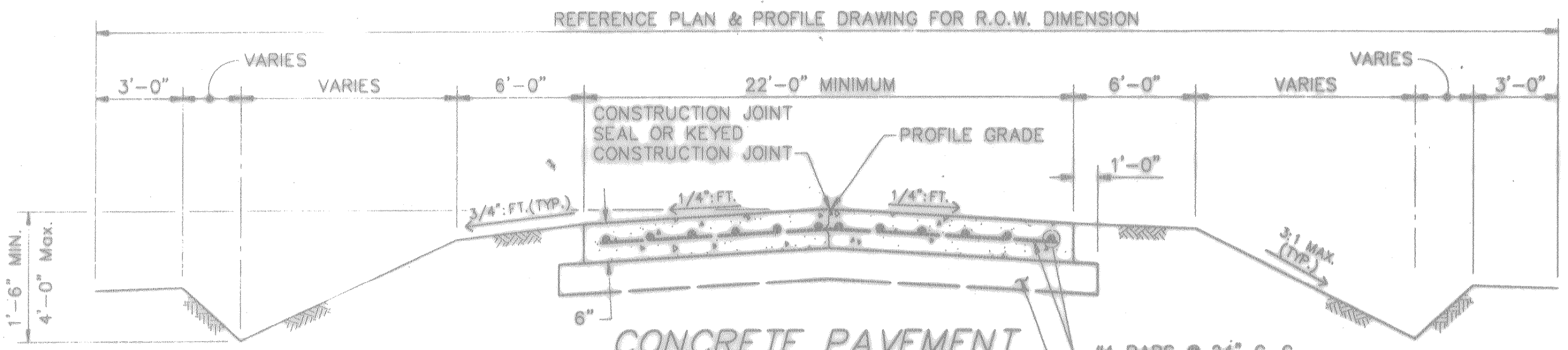
**SEMI-RIGID BASE PAVEMENT CURB & GUTTER SECTION**  
N.T.S.

REFER TO RULES AND REGULATIONS FOR SUBDIVISIONS FOR TREATMENT AND COMPACTION

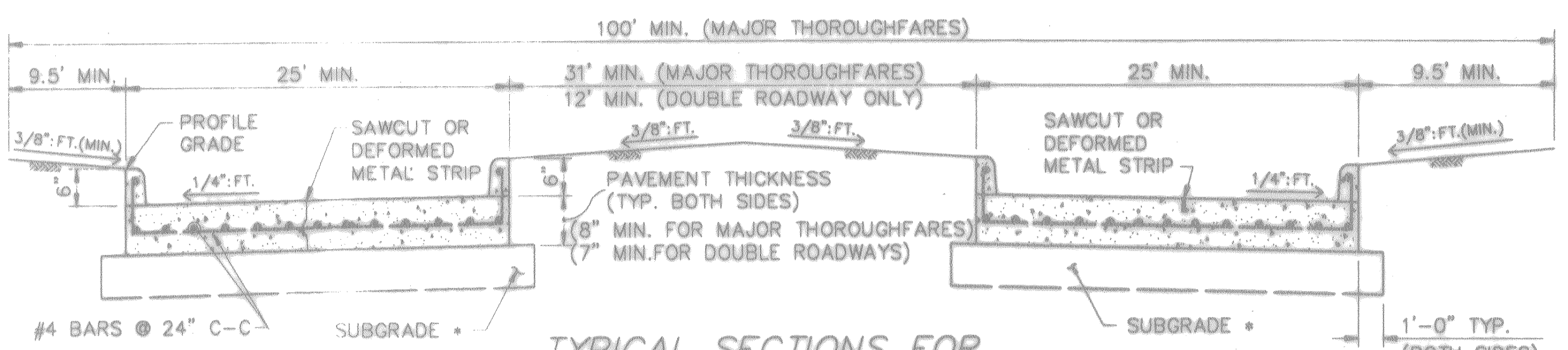


**FLEXIBLE BASE PAVEMENT DITCH SECTION**  
N.T.S.

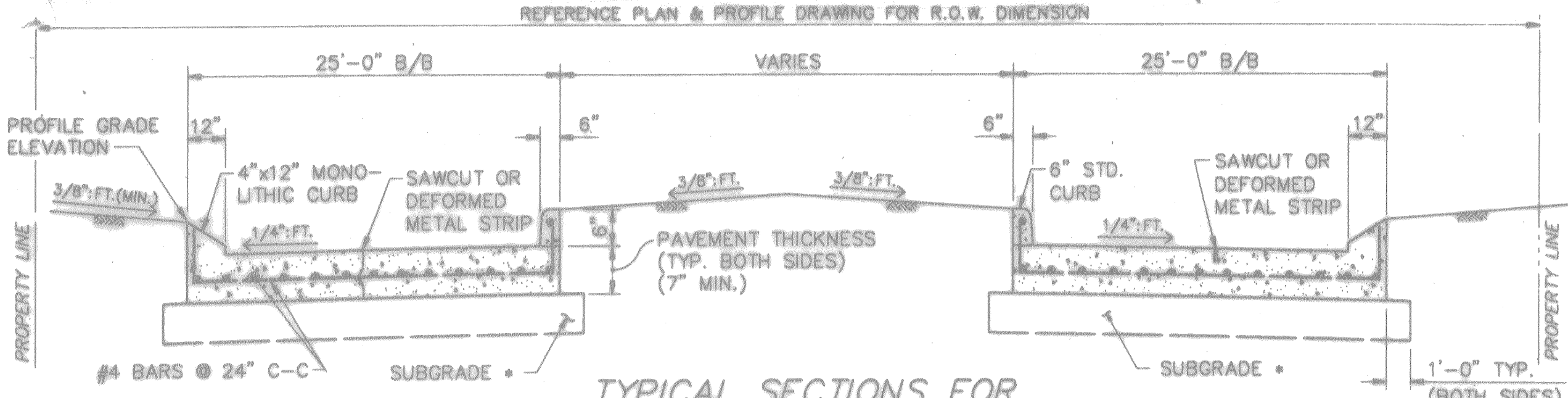
t = THICKNESS OF CONCRETE PAVEMENT REFER TO SUBDIVISION RULES AND REGULATIONS



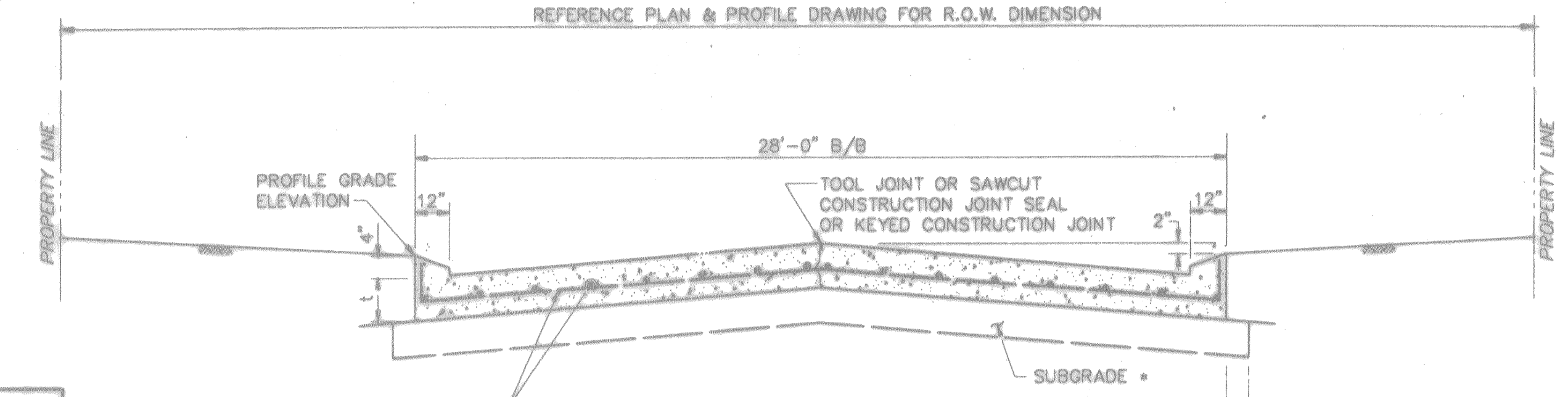
**CONCRETE PAVEMENT DITCH SECTION**  
N.T.S.



**TYPICAL SECTIONS FOR MAJOR THOROUGHFARES AND DOUBLE ROADWAYS**  
N.T.S.

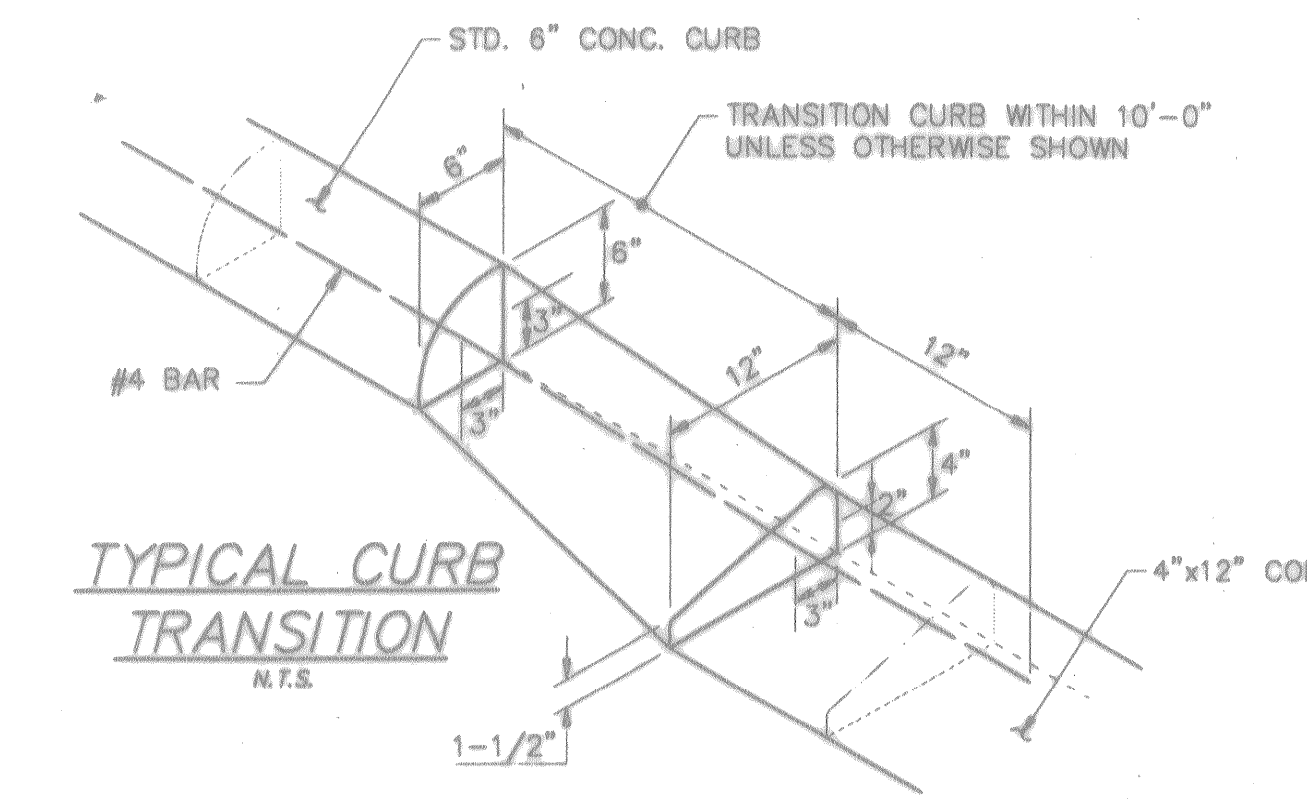


**TYPICAL SECTIONS FOR COMBINATION CURB FOR DIVIDED RESIDENTIAL STREETS**  
N.T.S.

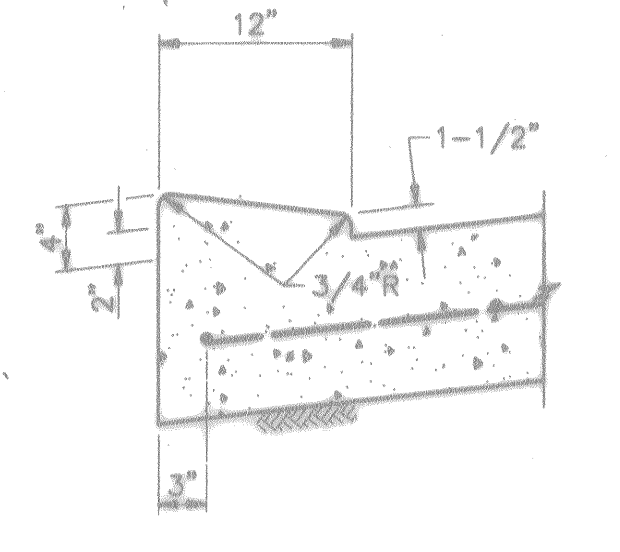


**TYPICAL SECTIONS FOR 4"X12" MONOLITHIC CURB FOR RESIDENTIAL STREETS**  
N.T.S.

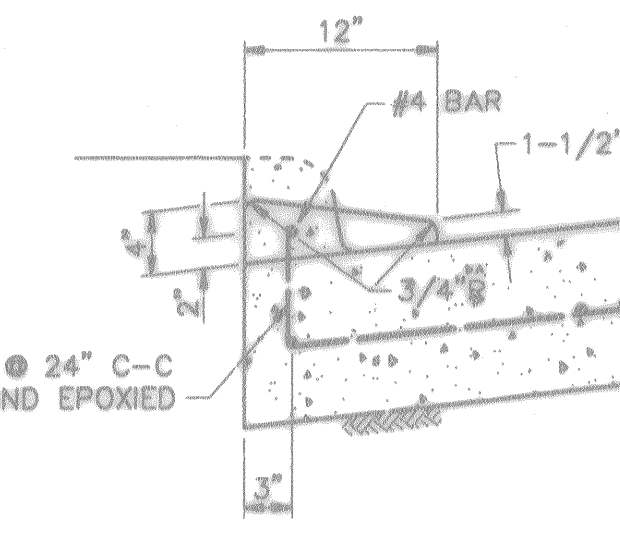
- 4"X12" MONOLITHIC AND TRANSITION CURB NOTES:**
- 6-inch concrete curb to be constructed on all esplanades, islands and non-residential streets. Residential streets may be constructed with either 6-inch concrete curb or 4-inch x 12-inch concrete curb as noted on plans.
  - All 4-inch x 12-inch concrete curbs to be poured monolithically with proposed concrete pavement.
  - Transitions from 6-inch concrete curb to 4-inch x 12-inch concrete curb to be accomplished within 10 feet, unless otherwise shown. If this 10-foot transition curb is not poured monolithically with the pavement, then reinforcing steel as shown above in typical detail 4-inch x 12-inch transition curb is to be installed.



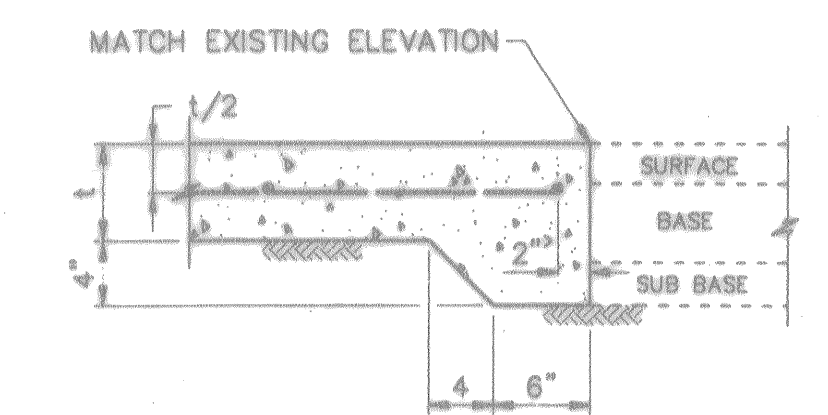
**TYPICAL CURB TRANSITION**  
N.T.S.



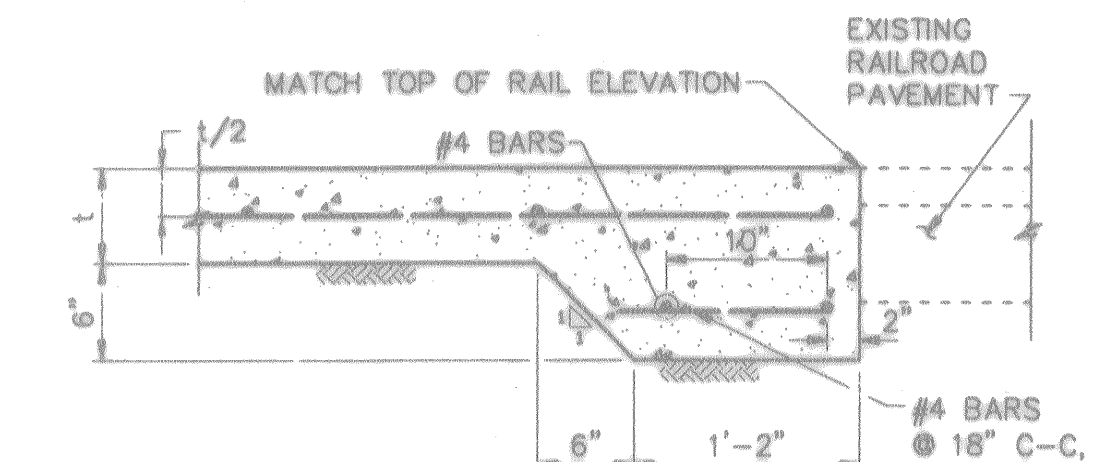
**TYPICAL DETAIL 4"X12" MONOLITHIC CURB**  
SCALE: 1"=1'-0"



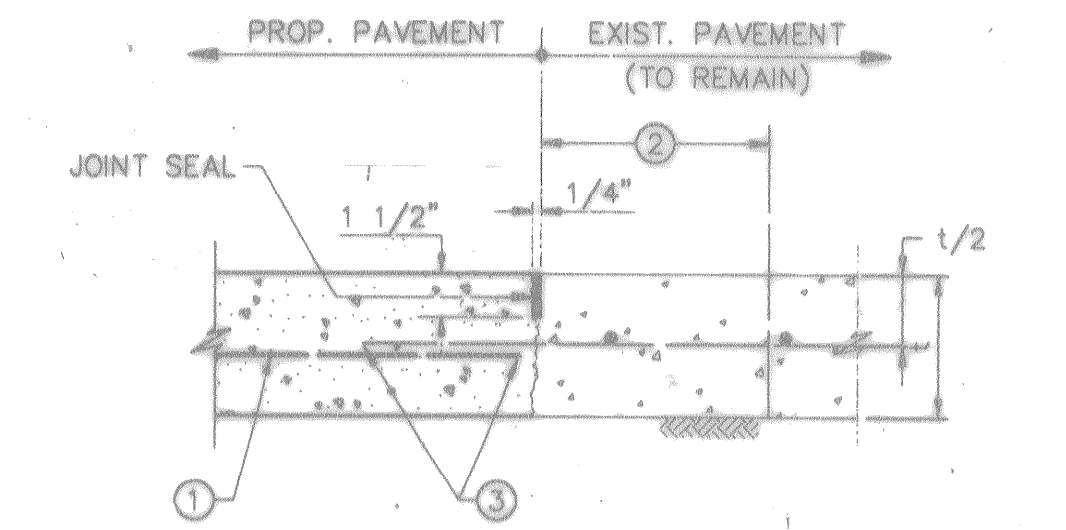
**TYPICAL DETAIL 4"X12" TRANSITION CURB**  
SCALE: 1"=1'-0"



**CONCRETE TO ASPHALT STANDARD PAVING HEADER**  
SCALE: 1"=1'-0"

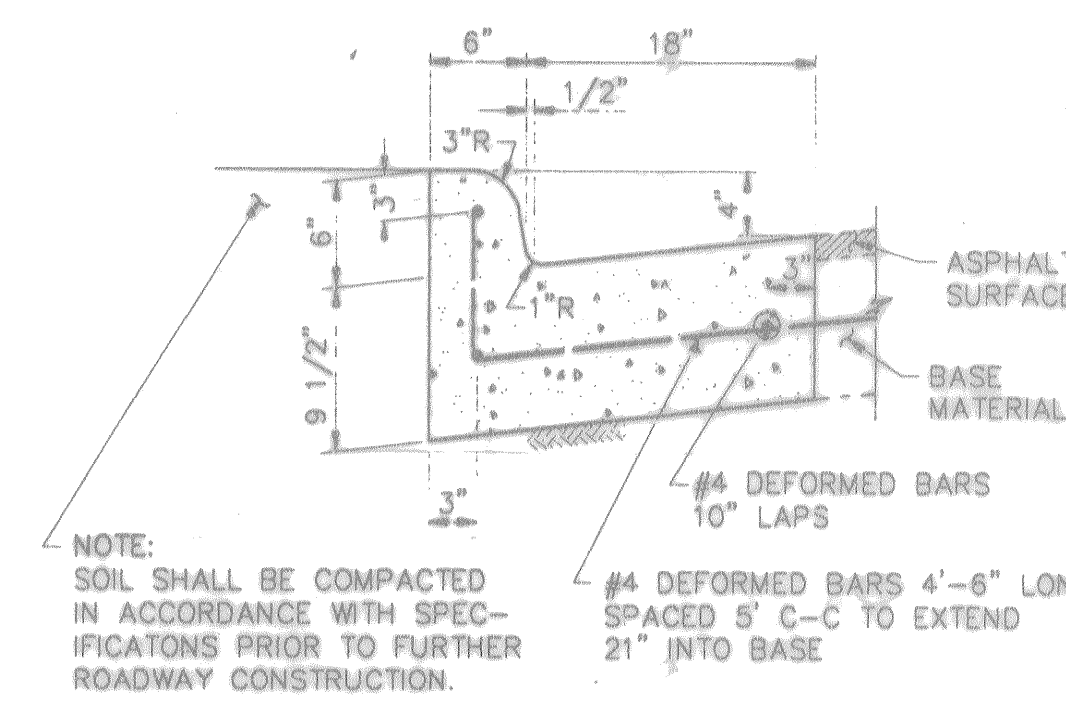


**RAILROAD HEADER DETAIL**  
SCALE: 1"=1'-0"

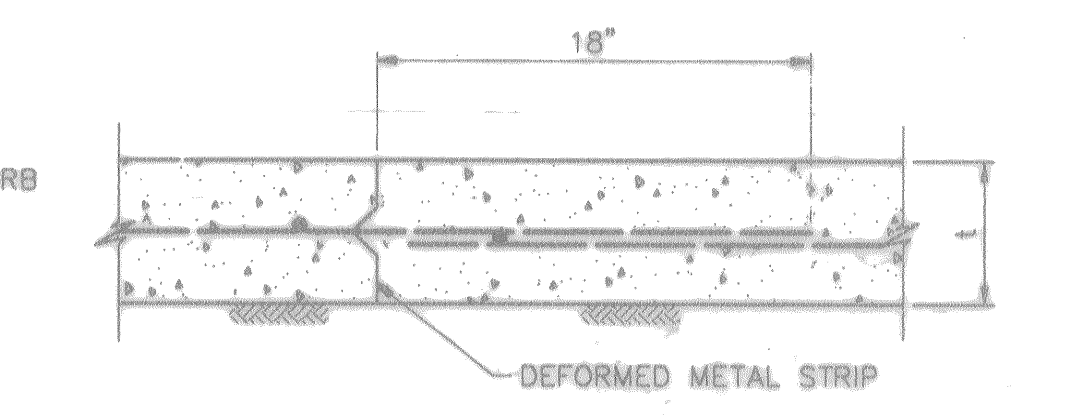


**CONCRETE TO CONCRETE STANDARD PAVEMENT TIE-IN**  
(SEE NOTES)

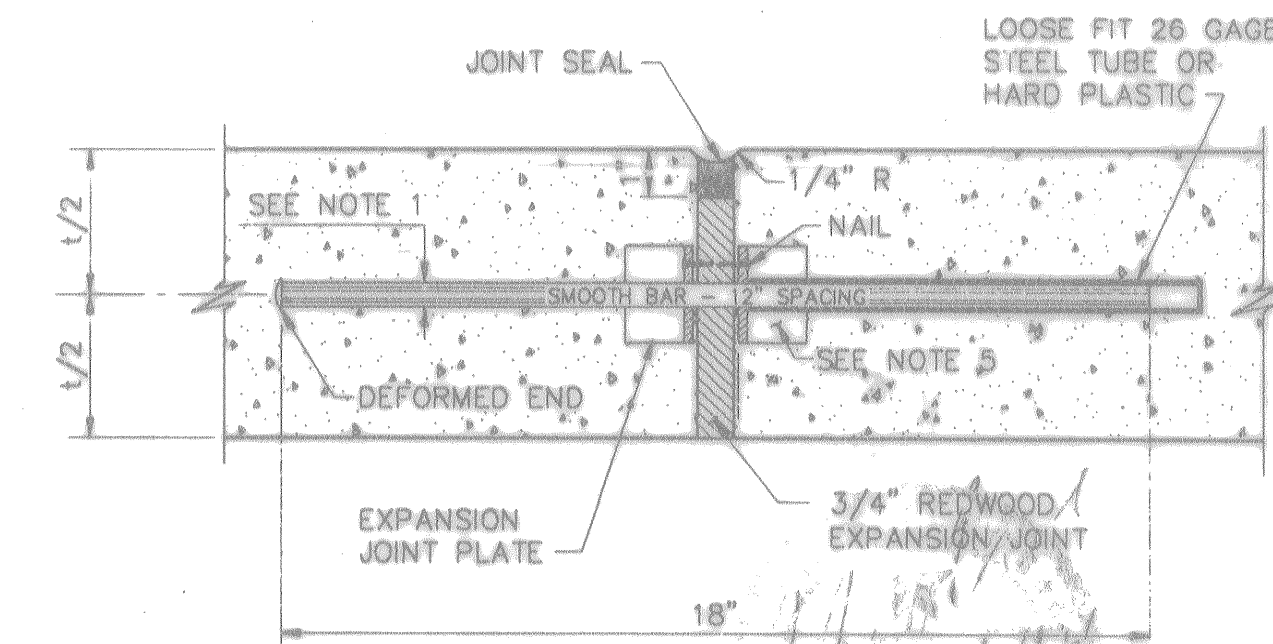
- Reinforcing centered in proposed pavement, 3" clear at edges.
- Saw-cut & remove 2' existing pavement or pavement with curb. Expose and clean existing reinforcing.
- 2# bar diameter lap or weld, if directed.



**MONOLITHIC CONCRETE CURB & GUTTER DETAIL**  
SCALE: 1"=1'-0"



**CONSTRUCTION JOINT DETAIL**  
SCALE: 1 1/2"=1'-0"



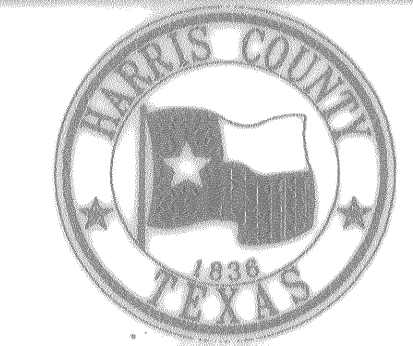
**DOWEL TYPE EXPANSION JOINT DETAIL**  
SCALE: 3"=1'-0"

- NOTES:**
- Dowels for pavement expansion joints shall be 3/4" x 6" to less than 2" pavement thickness, 1" x 6" for 2" to less than 6" pavement thickness and 1 1/4" x 6" for 6" or greater pavement thickness.
  - Expansion joint shall be placed at the end of each curb return and at maximum 20' spacing (See plans).
  - All joint seal material shall be asphalt rubber in accordance with ASTM designation D3405.
  - If deformed metal strips are allowed, they shall be staked in place with #3 bars.
  - Pre-manufactured joint plates.



NO.	REVISIONS	DATE	NAME

**HARRIS COUNTY ENGINEERING DEPARTMENT**



PROJECT TITLE	SUBDIVISION STANDARD PAVEMENT DETAILS		14 of 16
DRAWN BY	L.M.J.	SCALE	AS NOTED
CHECKED BY	S.	DATE	09/03/93
APPROVED BY	[Signature]		S/D-1