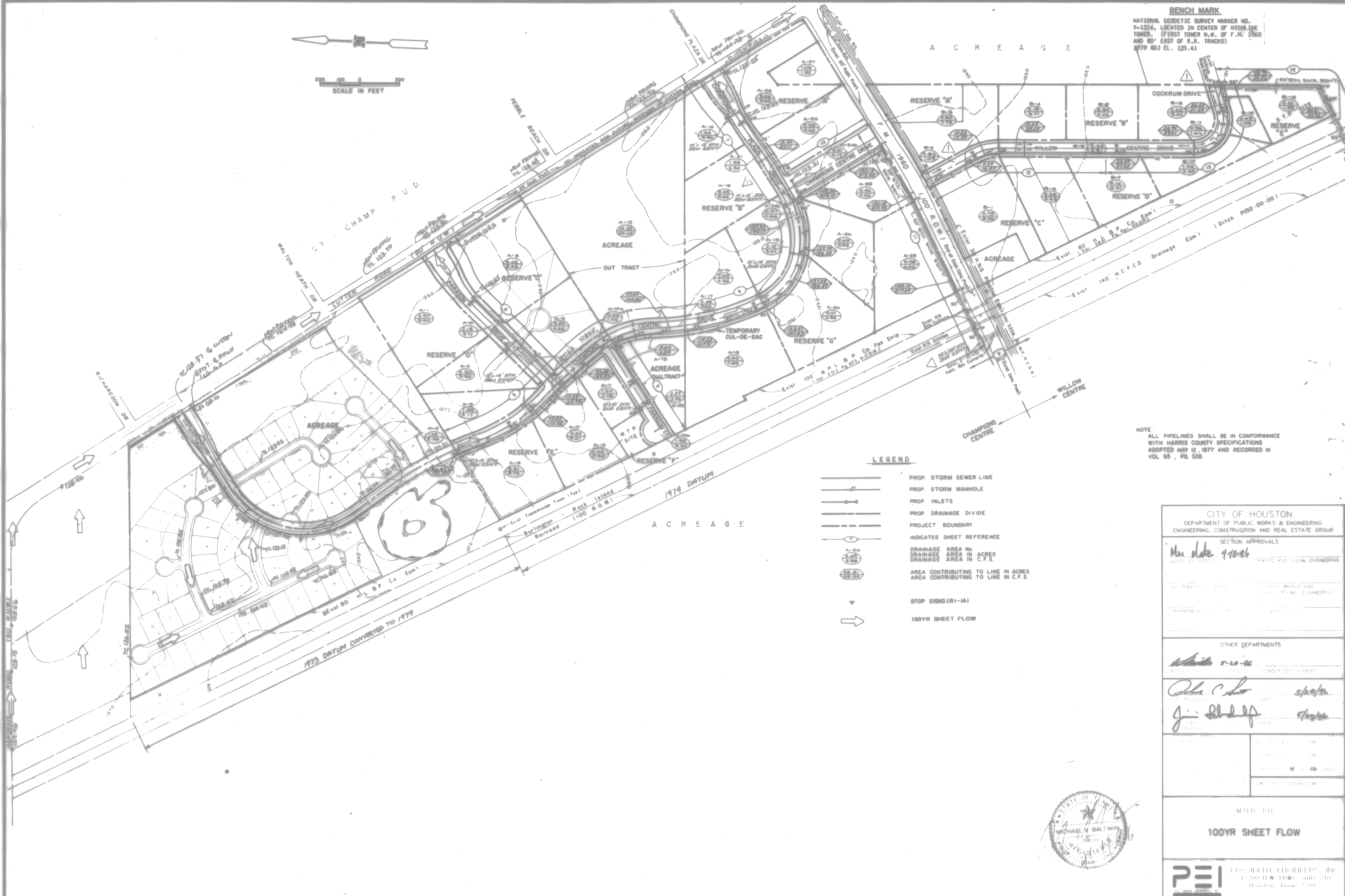


BENCH MARK
 NATIONAL GEODETIC SURVEY MARKER NO. V-1216, LOCATED IN CENTER OF HIGH LINE TOWER. (FIRST TOWER N.M. OF F.M. 1960 AND 80' EAST OF R.R. TRACKS) 1979 ADJ. EL. 125.41



LEGEND

- PROP. STORM SEWER LINE
- PROP. STORM MANHOLE
- PROP. INLETS
- PROP. DRAINAGE DIVIDE
- PROJECT BOUNDARY
- INDICATES SHEET REFERENCE
- DRAINAGE AREA No. DRAINAGE AREA IN ACRES
- DRAINAGE AREA IN C.F.S.
- AREA CONTRIBUTING TO LINE IN ACRES
- AREA CONTRIBUTING TO LINE IN C.F.S.
- STOP SIGNS (R1-1A)
- 100YR SHEET FLOW

NOTE:
 ALL PIPELINES SHALL BE IN CONFORMANCE WITH HARRIS COUNTY SPECIFICATIONS ADOPTED MAY 12, 1977 AND RECORDED IN VOL. 95, PG. 528.

CITY OF HOUSTON DEPARTMENT OF PUBLIC WORKS & ENGINEERING ENGINEERING, CONSTRUCTION AND REAL ESTATE GROUP	
SECTION APPROVALS	
<i>Max Noto</i> 9-10-96 WATER ENGINEER	PLUMBING AND SIGNAL ENGINEERING
SANITARY ENGINEER	STREET, BRIDGE AND HIGHWAY ENGINEERING
CIVIL ENGINEER	SURVEYING
OTHER DEPARTMENTS	
<i>Michael</i> 9-20-96 ENGINEER	FINANCIAL DEPARTMENT
<i>John</i> ENGINEER	PUBLIC WORKS
<i>Jim</i> ENGINEER	PUBLIC WORKS
DATE: 9-16-96	TIME: 4:16 PM
M.U.D. 191	
100YR SHEET FLOW	
PEI ENGINEERS, INC. 1700 H.W. HWY. Suite 210 Houston, Texas 77058	

THIS SHEET NOT FOR CONSTRUCTION PURPOSES