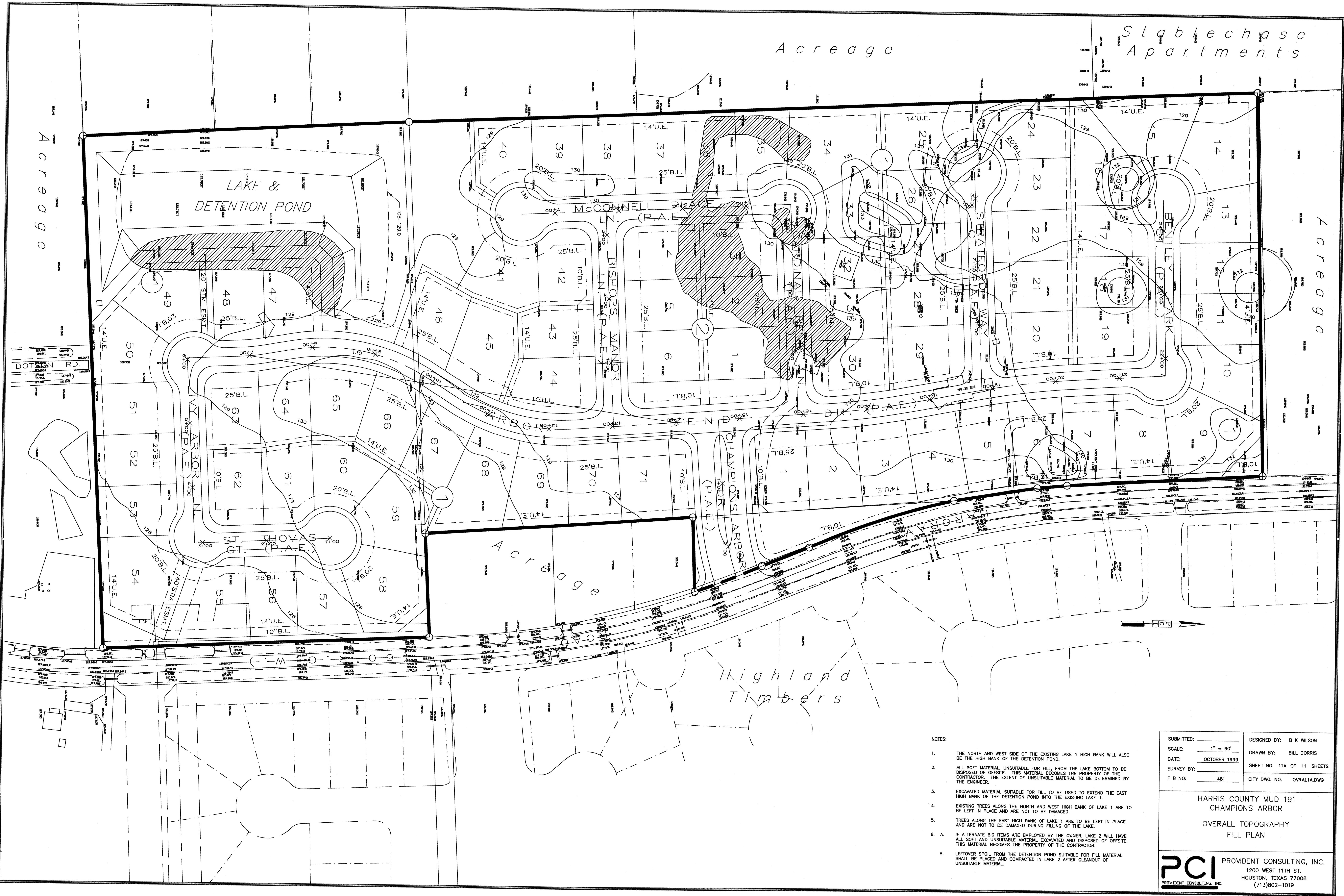


Acreage

Stablechase  
Apartments

Acreage

Acreage



Highland  
Timbers

NOTES:

1. THE NORTH AND WEST SIDE OF THE EXISTING LAKE 1 HIGH BANK WILL ALSO BE THE HIGH BANK OF THE DETENTION POND.
2. ALL SOFT MATERIAL, UNSUITABLE FOR FILL, FROM THE LAKE BOTTOM TO BE DISPOSED OF OFFSITE. THIS MATERIAL BECOMES THE PROPERTY OF THE CONTRACTOR. THE EXTENT OF UNSUITABLE MATERIAL TO BE DETERMINED BY THE ENGINEER.
3. EXCAVATED MATERIAL SUITABLE FOR FILL TO BE USED TO EXTEND THE EAST HIGH BANK OF THE DETENTION POND INTO THE EXISTING LAKE 1.
4. EXISTING TREES ALONG THE NORTH AND WEST HIGH BANK OF LAKE 1 ARE TO BE LEFT IN PLACE AND ARE NOT TO BE DAMAGED.
5. TREES ALONG THE EAST HIGH BANK OF LAKE 1 ARE TO BE LEFT IN PLACE AND ARE NOT TO BE DAMAGED DURING FILLING OF THE LAKE.
6. A. IF ALTERNATE BID ITEMS ARE EMPLOYED BY THE OWNER, LAKE 2 WILL HAVE ALL SOFT AND UNSUITABLE MATERIAL EXCAVATED AND DISPOSED OF OFFSITE. THIS MATERIAL BECOMES THE PROPERTY OF THE CONTRACTOR.  
 B. LEFTOVER SPOIL FROM THE DETENTION POND SUITABLE FOR FILL MATERIAL SHALL BE PLACED AND COMPACTED IN LAKE 2 AFTER CLEANOUT OF UNSUITABLE MATERIAL.

SUBMITTED:	DESIGNED BY: B K WILSON
SCALE: 1" = 60'	DRAWN BY: BILL DORRIS
DATE: OCTOBER 1999	SHEET NO. 11A OF 11 SHEETS
SURVEY BY:	CITY DWG. NO. OVR1A1A.DWG
F B NO: 481	

HARRIS COUNTY MUD 191  
 CHAMPIONS ARBOR  
 OVERALL TOPOGRAPHY  
 FILL PLAN

**PCI** PROVIDENT CONSULTING, INC.  
 1200 WEST 11TH ST.  
 HOUSTON, TEXAS 77008  
 (713)802-1019