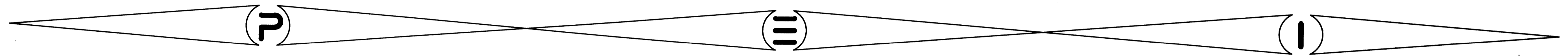


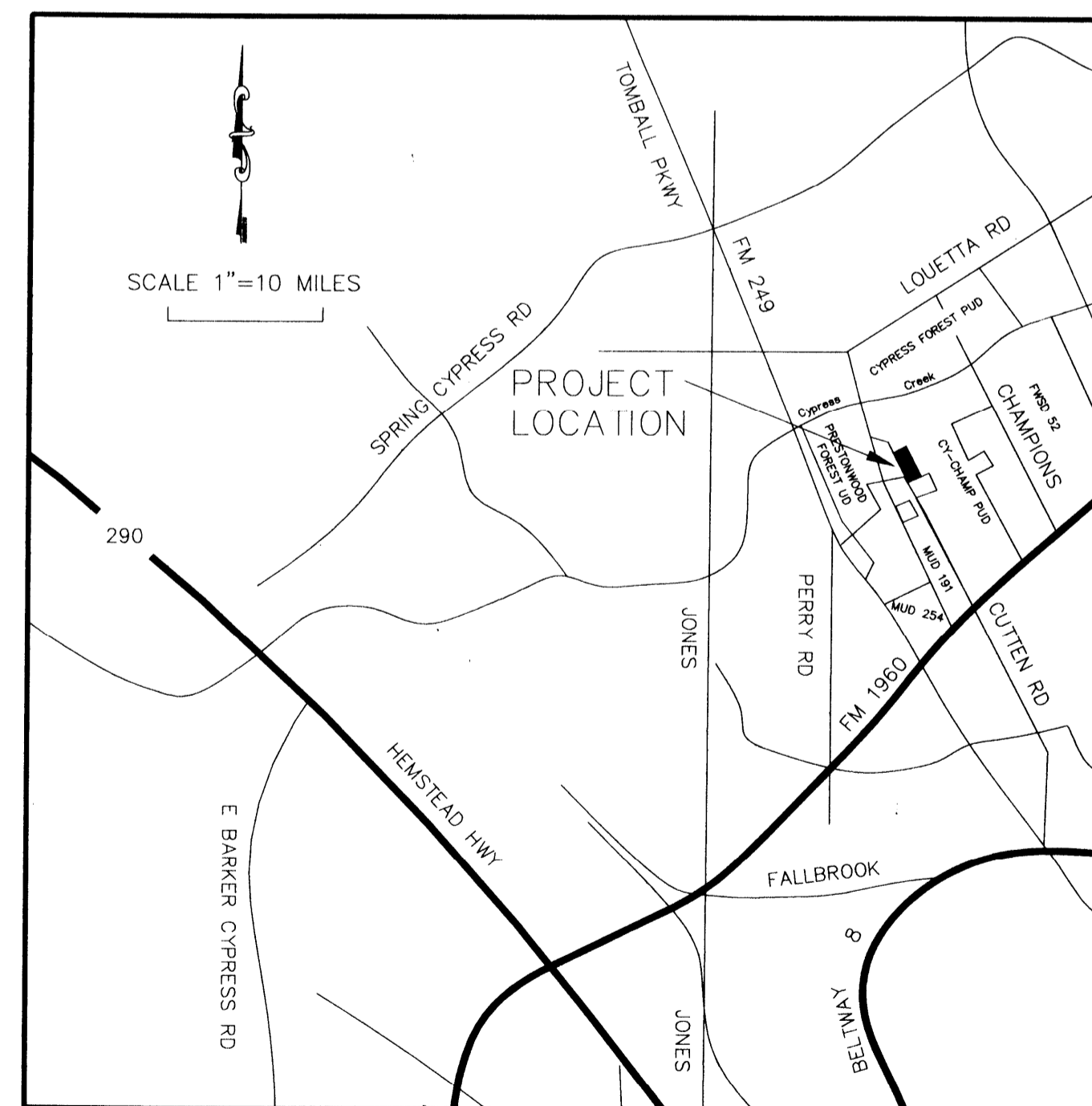
ESTATES AT CHAMPIONS PARK NORTH



H.C.M.U.D NO. 191

SANITARY - STORM - WATER - PAVING

| TITLE | SHEET NO. |
|------------------------------------|-----------|
| COVER | 1 |
| SANITARY & WATER OVERALL | 2 |
| PAVING & DRAINAGE OVERALL | 3 |
| GENERAL NOTES | 4 |
| PLAN & PROFILE | 5-17 |
| POLLUTION PREVENTION LOCATION | 18 |
| SANITARY SEWER FLOW AND SHEET FLOW | 19 |
| STORM SEWER DETAILS | 20 |
| SANITARY SEWER DETAILS | 21 |
| WATER DETAILS | 22 |
| PAVING DETAILS | 23 |
| TRENCH SAFETY SYSTEM | 24 |
| POLLUTION DETENTION DETAILS | 25 |
| WHEELCHAIR RAMP DETAILS | 26 |
| H.C.F.C.D. STANDARD DETAILS | 27 |



VICINITY MAP
HARRIS COUNTY, TEXAS
MAP REFERENCY
KEY MAP NO. 370A-B
LAMBERT MAP NO. 4966(639)-B-1

| STREET INDEX | SHEET NO. |
|----------------|-----------|
| HARGRAVE RD. | 6 |
| CUTTEN ROAD | 7-11A |
| QUAHNA DR. | 13 |
| ORIENOCO DRIVE | 14 |
| TIERRA COURT | 14 |
| RELEX COURT | 15 |
| ARON COURT | 16 |
| LAVEVA COURT | 17 |

APPROVED
CITY OF HOUSTON

Richard C. Scott
CITY ENGINEER
RICHARD C. SCOTT, P.E.



11/17/97
DATE

Jimmie Schindewolf
DIRECTOR OF PUBLIC WORKS AND ENGINEERING
JIMMIE SCHINDEWOLF, P.E.

1-16-98
DATE

CITY DWG. NO.
SHEET NO. 1 OF 27 SHEETS

"CONTRACTOR SHALL NOTIFY THE CITY OF HOUSTON, DEPARTMENT OF PUBLIC WORKS AND ENGINEERING, ENGINEERING CONSTRUCTION AND REAL ESTATES GROUP (TELEPHONE NO. 754-0700) 48 HOURS BEFORE STARTING WORK ON THIS PROJECT."

JOB NO. 470-U
DATE: NOVEMBER 1997

CPC101 NO. 12605
LOG NO. 97-0581

PEI PROVIDENT ENGINEERS, INC.
11241 RICHMOND, SUITE E107
HOUSTON, TEXAS 77082