

BENCH MARK

BENCH MARK: NATIONAL GEODETIC SURVEY MARKER
 Y1216, 1973 ADJ., ELEV = 125.994
 Y1216, 1978 ADJ., ELEV = 125.406
 Y1216, 1988 ADJ., ELEV = 123.94 ADJUSTMENT
 USED FOR CUTTEN ROAD.

ELEVATIONS SHOWN HEREON ARE BASED ON 1973
 ADJUSTMENT.

TBM#1: TOP OF CURB AT CENTERLINE INLET NORTH
 SIDE OF TOURNAMENT DRIVE AT CENTERLINE
 QUEENSCLUB DRIVE ELEV. = 114.69

APPROVED: _____
 Assistant for County Engineer

Date _____

Water & Sanitary Sewer Lines Approved as to
 Location Only
 The Above Authorization is Valid for 1 Year
 Only

Rev.	Date	Description	App.

PRIVATE UTILITY LINES SHOWN

- ENTEX, INC.
- SOUTHWESTERN BELL TELEPHONE CO.
Valid for One Year Only
- HOUSTON LIGHTING & POWER CO.
Approval Only for Crossing Underground
Ductlines Unless Noted. Valid at Time of Review Only.

CITY OF HOUSTON
 DEPARTMENT OF PUBLIC WORKS & ENGINEERING
 ENGINEERING, CONSTRUCTION AND REAL ESTATE GROUP

SECTION APPROVALS	
WATER ENGINEERING	TRAFFIC AND SIGNAL ENGINEERING
WASTEWATER ENGINEERING	STREET & BRIDGE ENGINEERING
STORM SEWER ENGINEERING	CONSTRUCTION

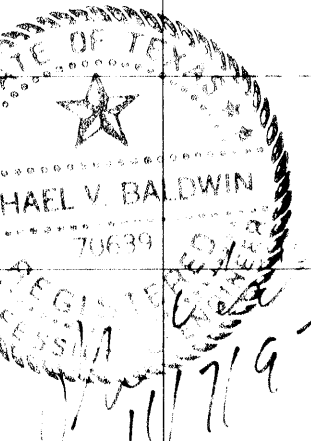
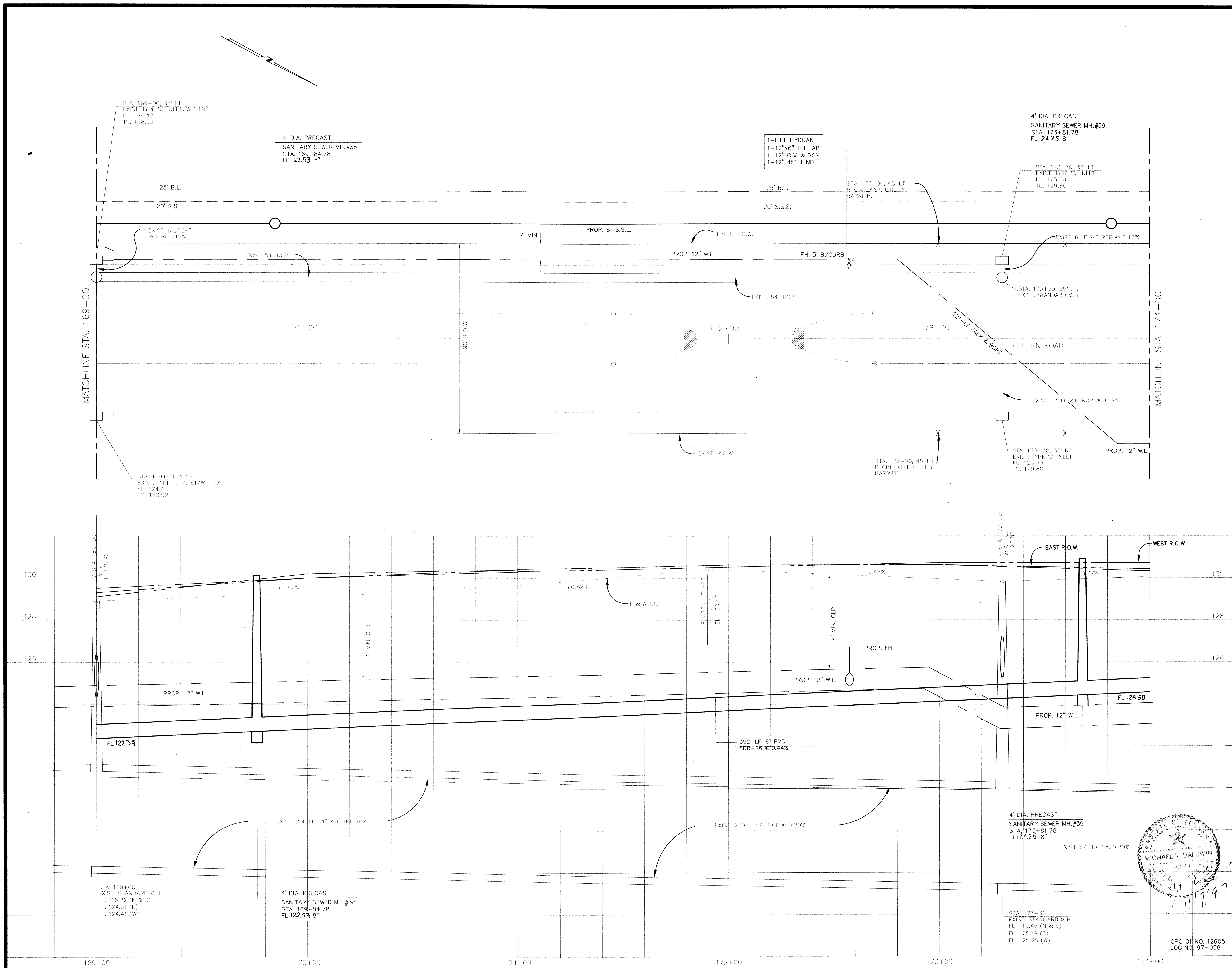
OTHER DEPARTMENTS
 PLANNING AND DEVELOPMENT SPONSOR DEPARTMENT

CITY ENGINEER	DATE
Director of Public Works and Engineering	DATE

SUBMITTED:	V: 1" = 2'	DESIGNED BY:	TIM
SCALE:	H: 1" = 20'	DRAWN BY:	TIM
DATE:	AUGUST 1997	SHEET NO.	11 OF 27 SHEETS
SURVEY BY:		CITY DWG. NO.:	
F B NO.:			

M.U.D. 191
 PLAN & PROFILE
 CUTTEN RD.
 STA. 169+00 TO 174+00

PROVIDENT ENGINEERS, INC.
 11241 RICHMOND, SUITE E107
 HOUSTON, TEXAS 77082



CPC101 NO. 12605
 LOG NO. 97-0581