

BENCH MARK
 BENCH MARK: NATIONAL GEODETIC SURVEY MARKER
 Y1216, 1973 ADJ., ELEV = 125.994
 Y1216, 1978 ADJ., ELEV = 125.406
 Y1216, 1988 ADJ., ELEV = 123.94 ADJUSTMENT
 USED FOR CUTTEN ROAD.
 ELEVATIONS SHOWN HEREON ARE BASED ON 1973
 ADJUSTMENT.
 TBM#1: TOP OF CURB AT CENTERLINE INLET NORTH
 SIDE OF TOURNAMENT DRIVE AT CENTERLINE
 QUEENSLAND DRIVE ELEV. = 114.69

APPROVED: *Cecilia Freeman*
 Assistant County Engineer
 2/16/98
 Date

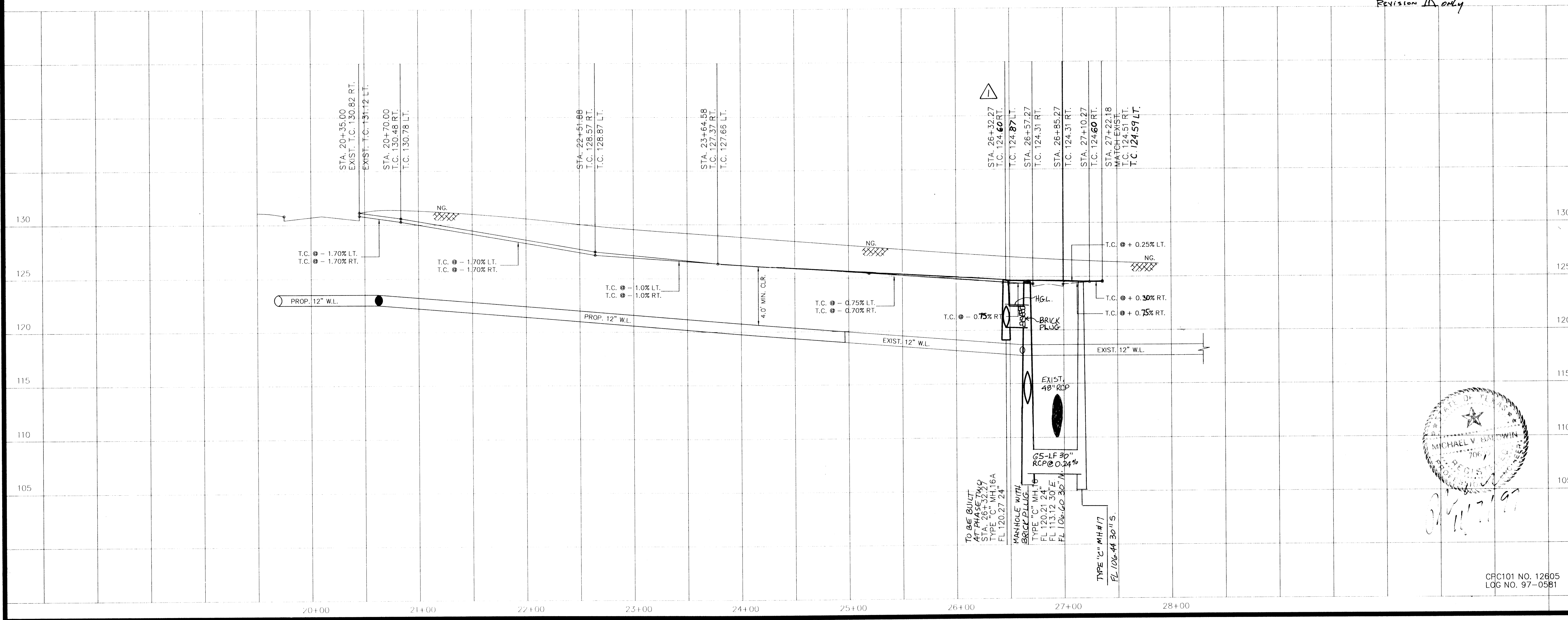
Water & Sanitary Sewer Lines Approved as to
 Location Only
 The Above Authorization is Valid for 1 Year
 Only

for 1st review
 11-11-98

Rev.	Date	Description	App.
△			
△	11-5-98	CHANGE TOP OF CURB	

NAPIER LANE

Revision *A* only



PRIVATE UTILITY LINES SHOWN

ENTEX, INC.
SOUTHWESTERN BELL TELEPHONE CO. Valid for One Year Only
HOUSTON LIGHTING & POWER CO. Approval Only for Crossing Underground Ductlines Unless Noted, Valid at Time of Review Only.

CITY OF HOUSTON
 DEPARTMENT OF PUBLIC WORKS & ENGINEERING
 ENGINEERING, CONSTRUCTION AND REAL ESTATE GROUP

SECTION APPROVALS

<i>Michael V. ...</i> 12-9-97 WATER ENGINEERING	TRAFFIC AND SIGNAL ENGINEERING
<i>John ...</i> 1-9-98 WASTEWATER ENGINEERING	STREET & BRIDGE ENGINEERING
<i>John ...</i> 12/21/97 STORM SEWER ENGINEERING	CONSTRUCTION

OTHER DEPARTMENTS

PLANNING AND DEVELOPMENT	SPONSOR DEPARTMENT
<i>John ...</i> 1/16/98 CITY ENGINEER	DATE
<i>John ...</i> 1-16-98 DIRECTOR OF PUBLIC WORKS AND ENGINEERING	DATE

SUBMITTED: V: 1" = 5' H: 1" = 50'	DESIGNED BY: TIM
SCALE: AUGUST 1997	DRAWN BY: TIM
DATE: SURVEY BY:	SHEET NO. 17A OF 27 SHEETS
F B NO:	CITY DWG. NO:

M.U.D. 191
 PLAN & PROFILE
 NAPIER LANE

PROVIDENT ENGINEERS, INC.
 11241 RICHMOND, SUITE E107
 HOUSTON, TEXAS 77082

CRC101 NO. 12605
 LQC NO. 97-0581

