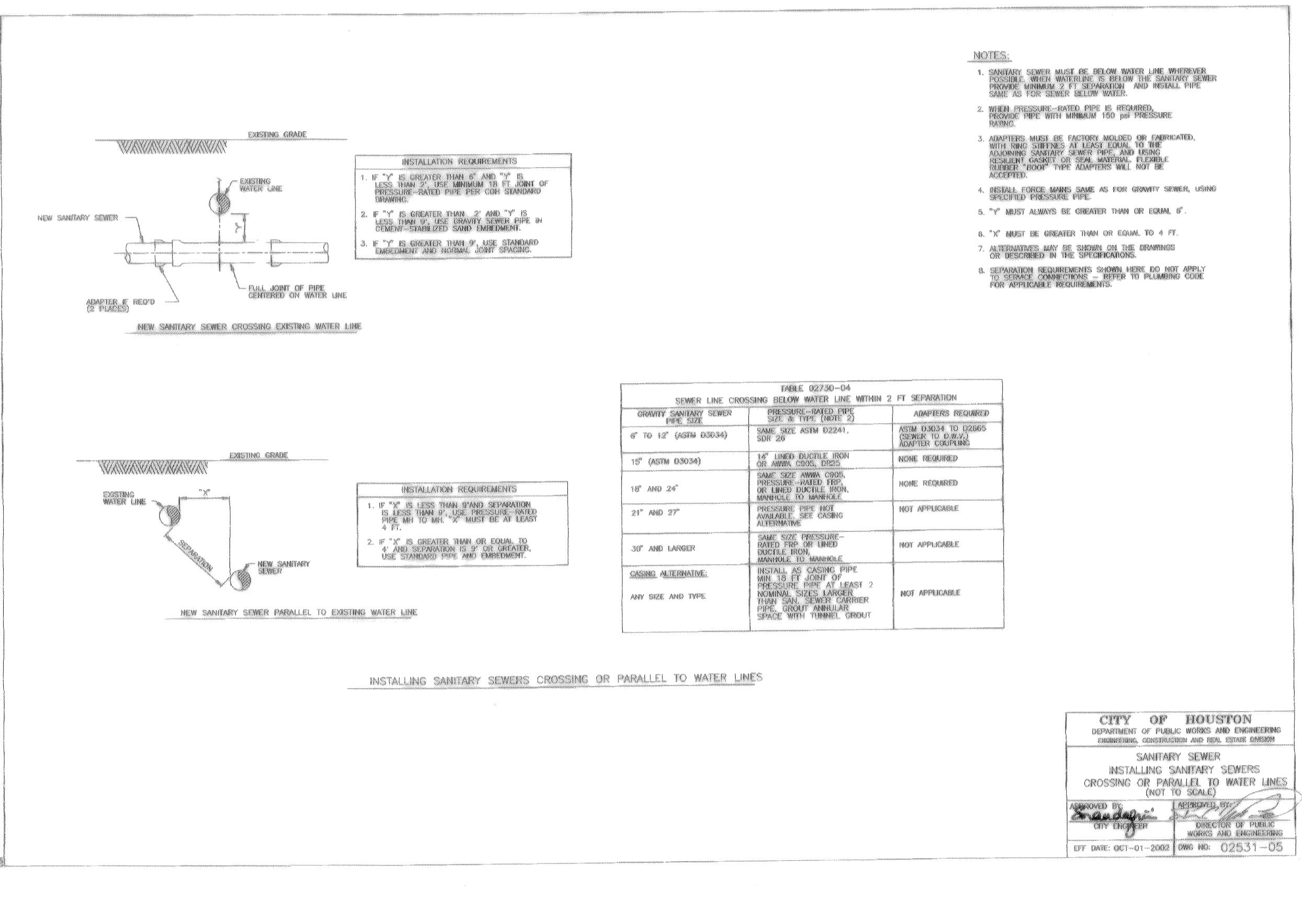
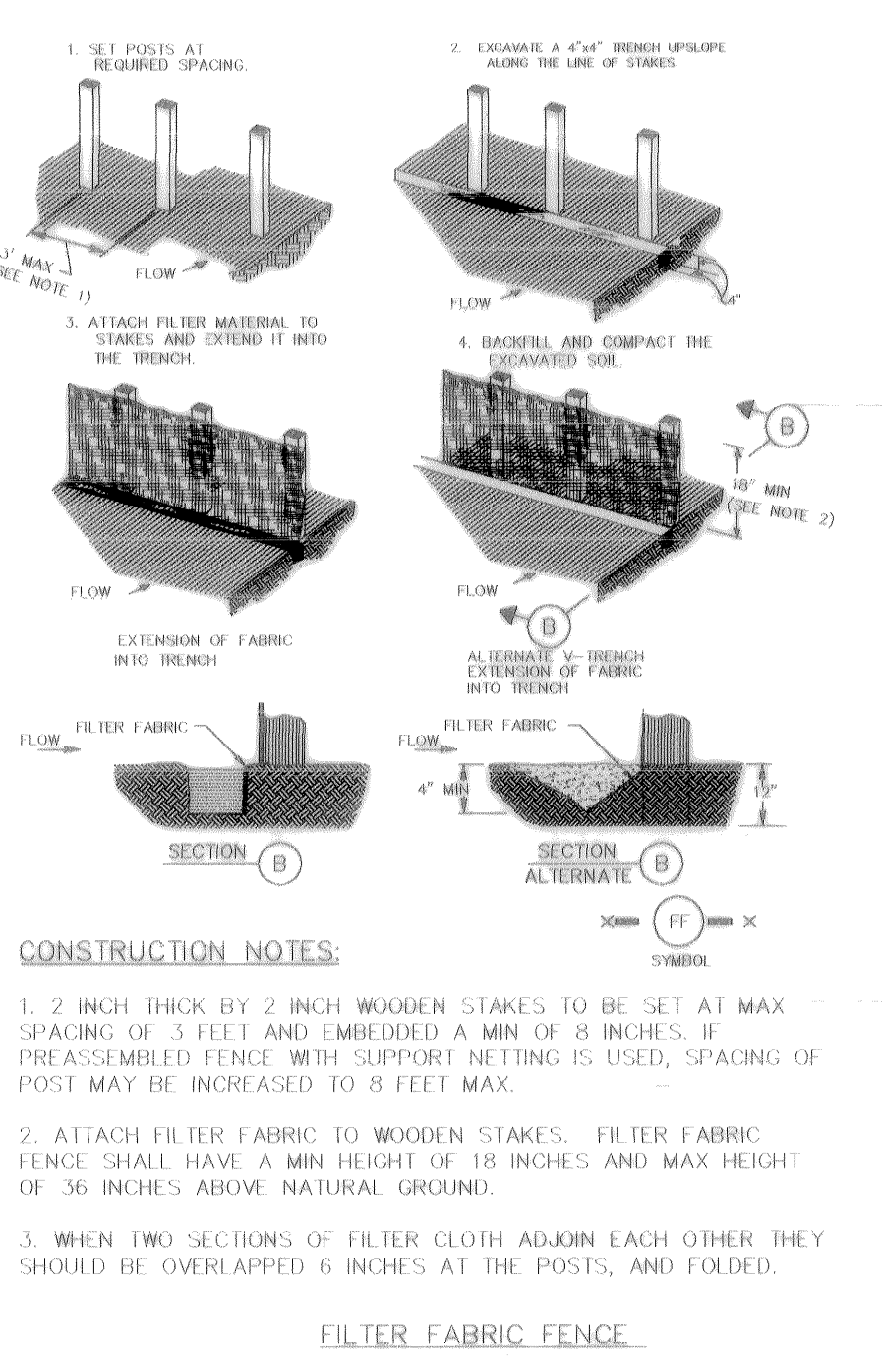


CITY OF HOUSTON
 DEPARTMENT OF PUBLIC WORKS AND ENGINEERING
 ENGINEERING, CONSTRUCTION AND REAL ESTATE DIVISION
SANITARY SEWER
 SERVICE LINE RECONNECTION
 FOR STORM SEWER CONFLICTS
 (NOT TO SCALE)
 DESIGNED BY: [Signature]
 APPROVED BY: [Signature]
 CITY ENGINEER: [Signature]
 OFF. DATE: OCT-01-2002 DWG NO: 02534-03



CITY OF HOUSTON
 DEPARTMENT OF PUBLIC WORKS AND ENGINEERING
 ENGINEERING, CONSTRUCTION AND REAL ESTATE DIVISION
SANITARY SEWER
 INSTALLING SANITARY SEWERS
 CROSSING OR PARALLEL TO WATER LINES
 (NOT TO SCALE)
 DESIGNED BY: [Signature]
 APPROVED BY: [Signature]
 CITY ENGINEER: [Signature]
 OFF. DATE: OCT-01-2002 DWG NO: 02531-05



STANDARD PROFILE LEGEND

CENTER LINE OF R.O.W. _____
 PROPERTY LINE N & E _____
 PROPERTY LINE S & W _____
 DITCH OR CURB N & E _____
 DITCH OR CURB S & W _____

AT LEAST 48 HOURS BEFORE EXCAVATING IN STREET R.O.W. OR EASEMENTS CALL UTILITY COORDINATING COMMITTEE 1-800-245-4545

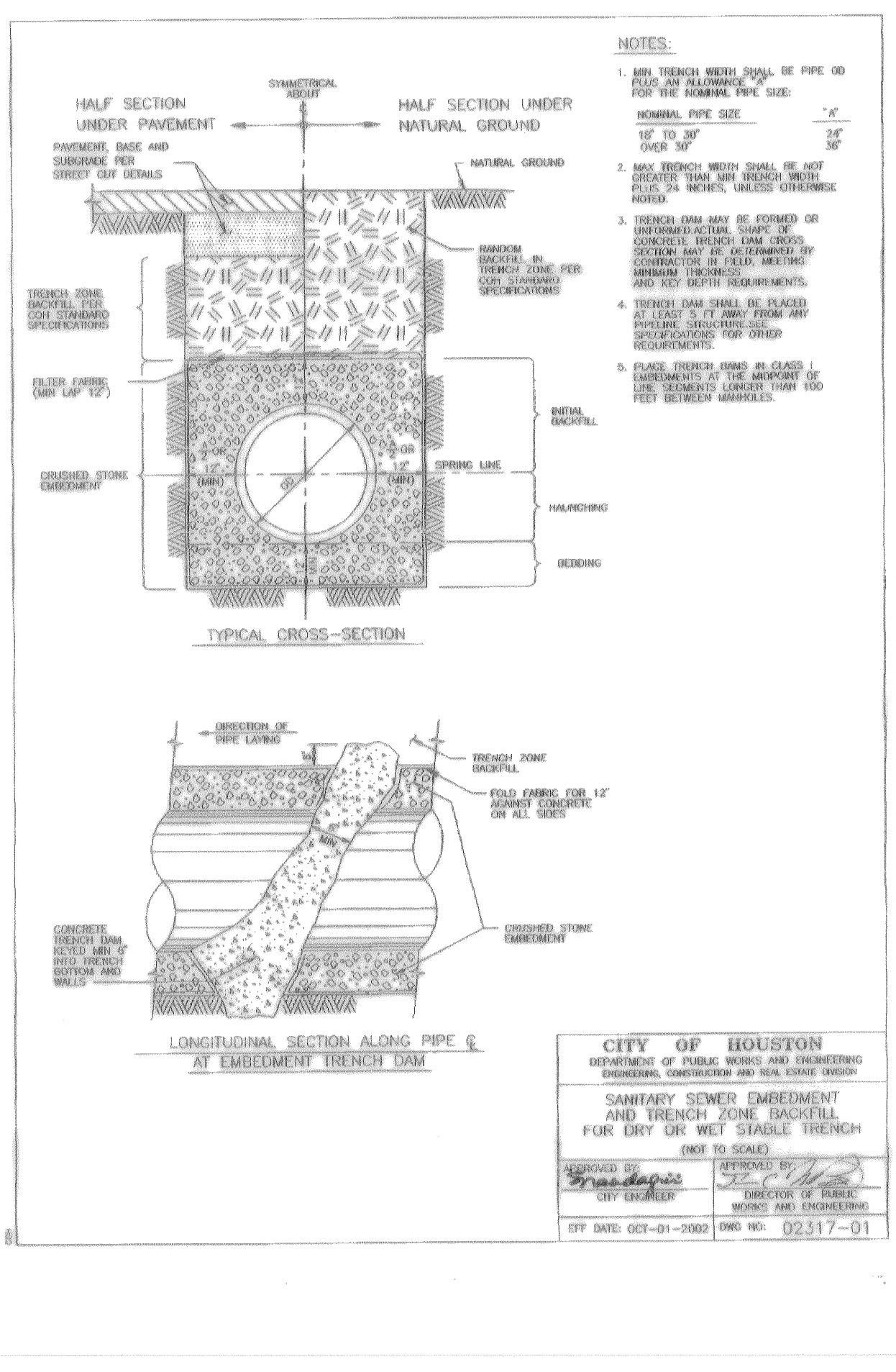
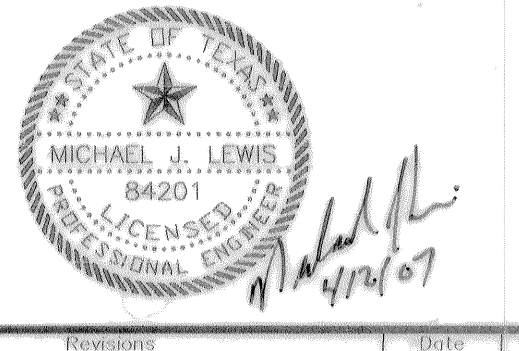
PRIVATE UTILITY LINES SHOWN

CenterPoint Energy/ Gas Facilities _____
 S.B.C. VALID FOR ONE YEAR
 APPROVED ONLY FOR CROSSING UNDERGROUND DUCTLINES UNLESS NOTED. VALID AT TIME OF REVIEW ONLY.

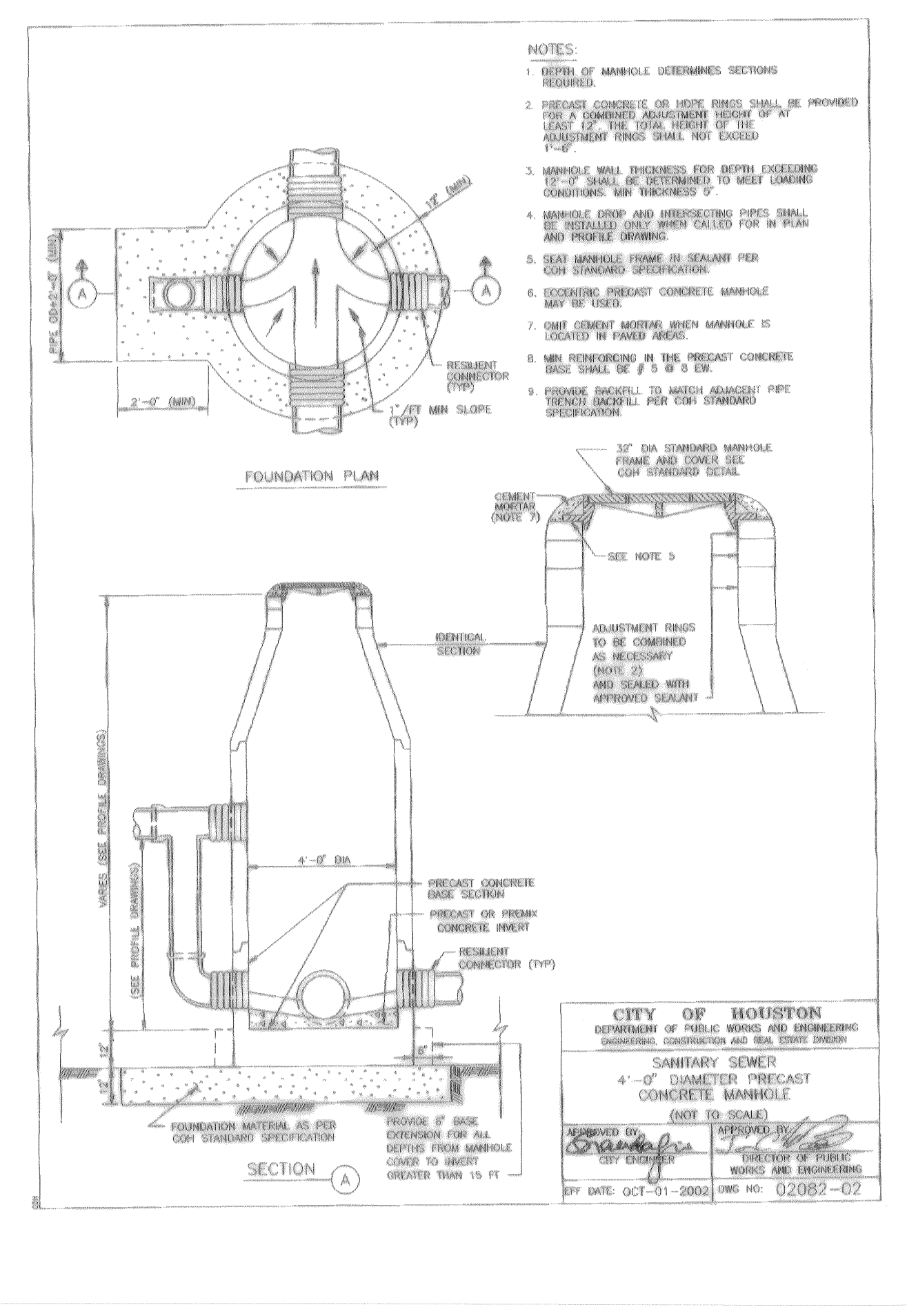
CenterPoint Energy/ Electric Facilities _____
 APPROVED ONLY FOR CROSSING UNDERGROUND DUCTLINES UNLESS NOTED. VALID AT TIME OF REVIEW ONLY.

CABLE COMPANY _____

NOTE:
 LOCATIONS OF EXISTING UTILITY LINES ARE BASED ON AVAILABLE CONSTRUCTION PLANS.



CITY OF HOUSTON
 DEPARTMENT OF PUBLIC WORKS AND ENGINEERING
 ENGINEERING, CONSTRUCTION AND REAL ESTATE DIVISION
SANITARY SEWER
 EMBEDMENT AND TRENCH ZONE BACKFILL
 FOR DRY OR WET SINGLE TRENCH
 (NOT TO SCALE)
 DESIGNED BY: [Signature]
 APPROVED BY: [Signature]
 CITY ENGINEER: [Signature]
 OFF. DATE: OCT-01-2002 DWG NO: 02317-01



CITY OF HOUSTON
 DEPARTMENT OF PUBLIC WORKS AND ENGINEERING
 ENGINEERING, CONSTRUCTION AND REAL ESTATE DIVISION
SANITARY SEWER
 4'-0\"/>

AS-BUILTS 3-16-07

MUNICIPAL UTILITY DISTRICT NO. 191
HARGRAVE ROAD
 DETAIL SHEET

ASPEN CIVIL DESIGN
 (832) 607-3551 14019 S.W. Freeway, Suite 301-278
 (281) 265-3551 Fax Sugar Land, Texas 77478

CITY OF HOUSTON
 DEPARTMENT OF PUBLIC WORKS AND ENGINEERING

WATER	WASTEWATER	TRAFFIC
ST. & BRIDGE	STORMWATER	SWD

FILE NO.: 225D12-0
 DRAWING SCALE:
 VERT. 1"=2'
 HORIZ. 1"=20'
 SHEET:
 10 OF 10