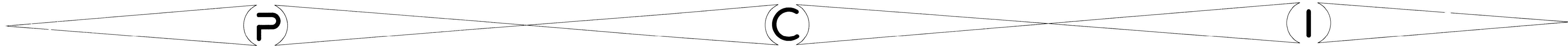


MUNICIPAL UTILITY DISTRICT NO. 191

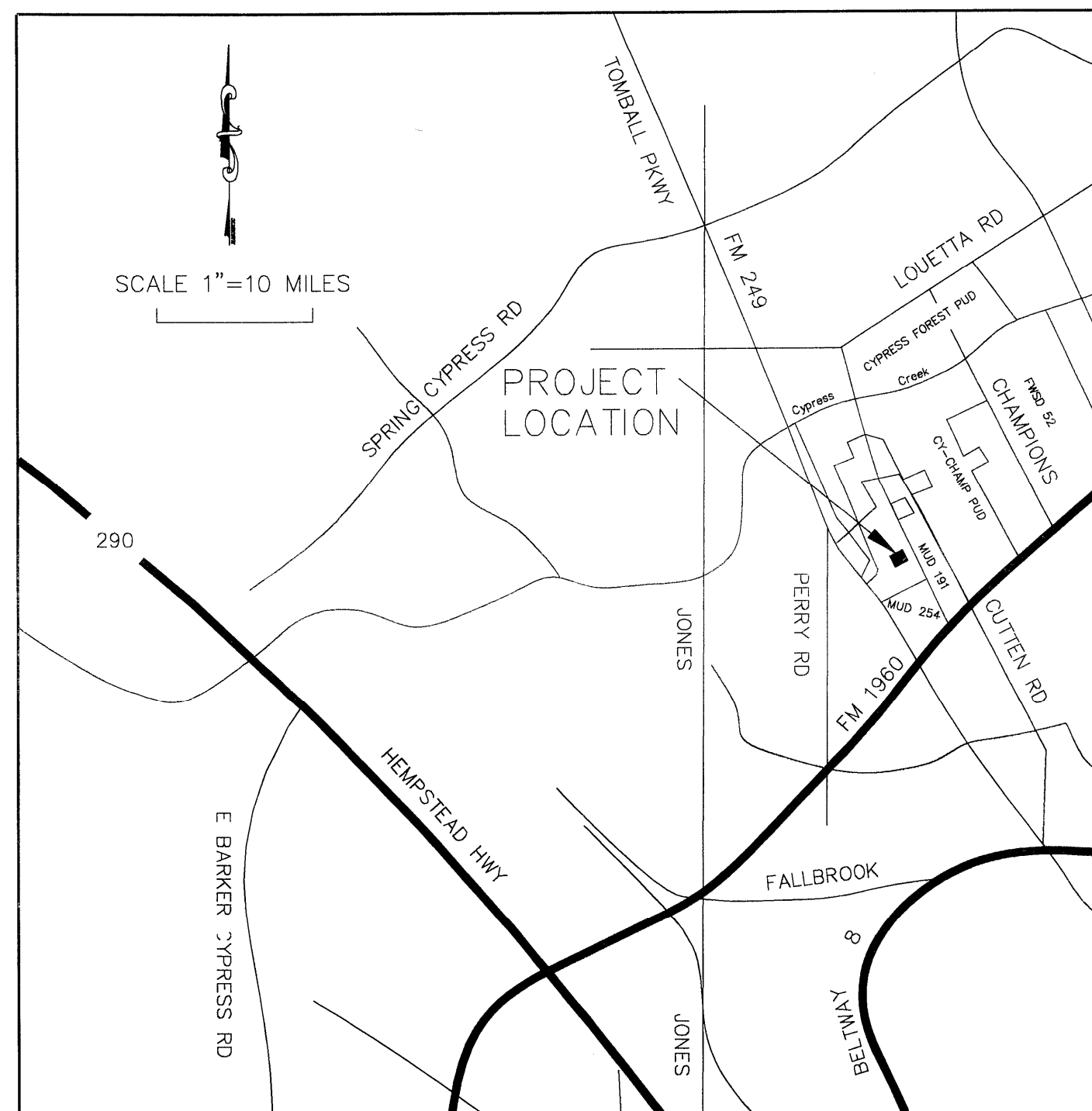
DETENTION BASIN OUTFALL STORM SEWER

to serve

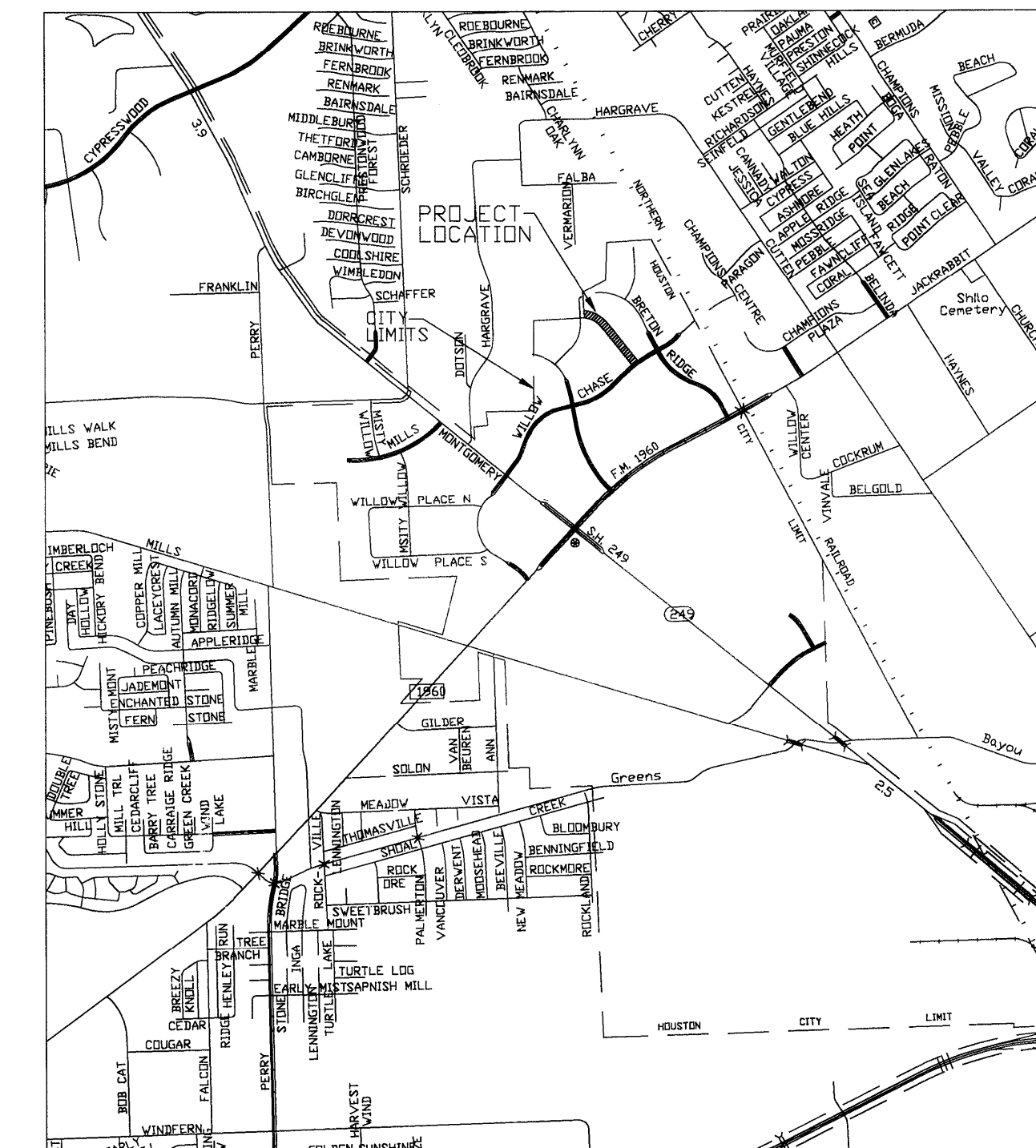
HIGHLAND OAKS - SECTION ONE



TITLE	DRAWING INDEX	SHEET NO.
COVER SHEET		1
OVERALL LAYOUT & NOTES		2
PLAN AND PROFILE-OUTFALL STORM SEWER		3
PLAN AND PROFILE-OUTFALL STORM SEWER		4
PLAN AND PROFILE-OUTFALL STORM SEWER		5
PLAN AND PROFILE-OUTFALL STORM SEWER		6
DETAILS - STORM SEWER & PAVING REPAIR		7
DETAILS - POLLUTION CONTROL		8
TRENCH SAFETY		9



LOCATION MAP
HARRIS COUNTY, TEXAS
MAP REFERENCY
KEY MAP NO. 370A-B
LAMBERT MAP NO. 4966(639)-B-1



VICINITY MAP
HARRIS COUNTY, TEXAS

APPROVED
CITY OF HOUSTON

Herbert L...
CITY ENGINEER

10-10-98
DATE

Jerry King
DIRECTOR OF PUBLIC WORKS AND ENGINEERING
JERRY KING, P.E.

10/12/98
DATE

CITY DWG. NO:
SHEET NO. 1 OF 1? SHEETS

"CONTRACTOR SHALL NOTIFY THE CITY OF HOUSTON, DEPARTMENT OF PUBLIC WORKS AND ENGINEERING, ENGINEERING CONSTRUCTION AND REAL ESTATES GROUP (TELEPHONE NO. 754-0700) 48 HOURS BEFORE STARTING WORK ON THIS PROJECT."

Bobby K. Whelan
9-29-98

DEVELOPER:
HIGHLAND MANAGEMENT, INC.

JOB NO. 466
DATE: SEPTEMBER 1998

LOG. NO. 98-0896
PCI PROVIDENT CONSULTING, INC.
1200 WEST 11TH ST.
HOUSTON, TEXAS 77008
(713)802-1019
34865