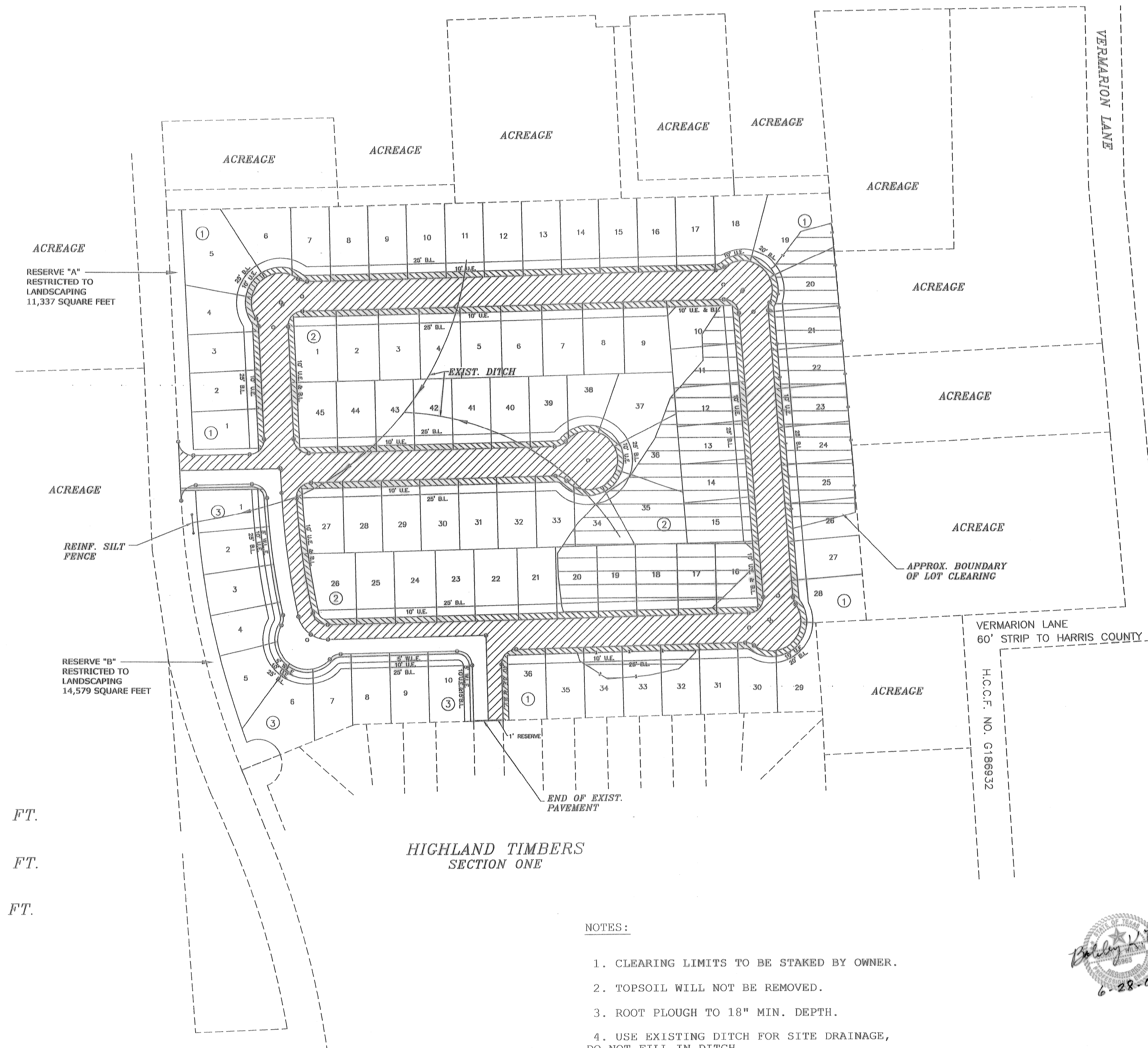


VICINITY MAP SCALE: 1"=1/2 MILE

BENCH MARK

BENCH MARK NATIONAL GEODETIC SURVEY MARKER
 Y1216, 1973 ADJ., ELEV. = 125.504
 Y1216, 1978 ADJ., ELEV. = 125.406
 Y1216, 1988 ADJ., ELEV. = 123.34 (THIS ADJUSTMENT WAS USED FOR CUTTEN ROAD)
 ELEVATIONS SHOWN HEREON ARE BASED ON 1973 ADJUSTMENT
 TBM #1: SET RAILROAD SPIKE ON SOUTH SIDE OF 14" TALLOW APPROXIMATELY 31 FEET NORTH OF THE END OF CENTERFIELD DRIVE ELEVATION = 125.60
 TBM #2: SET RAILROAD SPIKE ON SOUTH SIDE OF POWER POLE WITH TRANSFORMER ON WEST SIDE OF PRIVATE ROAD AND 200 FEET NORTH OF PRIVATE ROAD ELEVATION = 130.62
 TBM #3: SET RAILROAD SPIKE ON EAST SIDE OF POWER POLE ON WEST SIDE OF HARRIS ROAD AND NORTH OF THE INTERSECTION OF GOTOSW ROAD & HARRIS ROAD ELEVATION = 128.04
 TBM #4: RAILROAD SPIKE ON EAST SIDE OF POWER POLE #13629 ON THE WEST SIDE OF HARRIS ROAD APPROXIMATELY 30 FEET NORTH OF 18 INCH R.C.P. AT GRAVEL DRIVE FROM 13627 HARRIS ROAD ELEVATION = 130.56



CLEARING QUANTITIES

- 1. STREET R.O.W. - 164,569.78 SQ. FT.
- 2. UTILITY ESMTS. - 59,883.32 SQ. FT.
- 3. LOT CLEARING - 152,987.83 SQ. FT.

HIGHLAND TIMBERS SECTION ONE

NOTES:

1. CLEARING LIMITS TO BE STAKED BY OWNER.
2. TOPSOIL WILL NOT BE REMOVED.
3. ROOT PLOUGH TO 18" MIN. DEPTH.
4. USE EXISTING DITCH FOR SITE DRAINAGE, DO NOT FILL IN DITCH.

Bill Dorris
 6-28-00

Rev.	Date	Description	App.
△	06/28/00	CORRECTED LOW LYING AREA LIMITS	BKW

SUBMITTED: _____ DESIGNED BY: D K WILSON
 SCALE: 1" = 100' DRAWN BY: BILL DORRIS
 DATE: 05/01/00 SHEET NO. 2 OF 2 SHEETS
 SURVEY BY: _____ DWG. NO. CL&GR2.DWG
 JOB NO: 4640G

HARRIS COUNTY MUD 191
 HIGHLAND TIMBERS
 SECTION II
 CLEARING & GRUBBING
 OVERALL LAYOUT

PCI PROVIDENT CONSULTING, INC.
 1200 WEST 11TH ST.
 HOUSTON, TEXAS 77008
 (713)802-1010