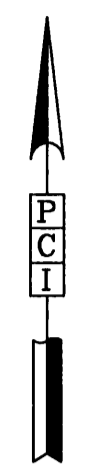
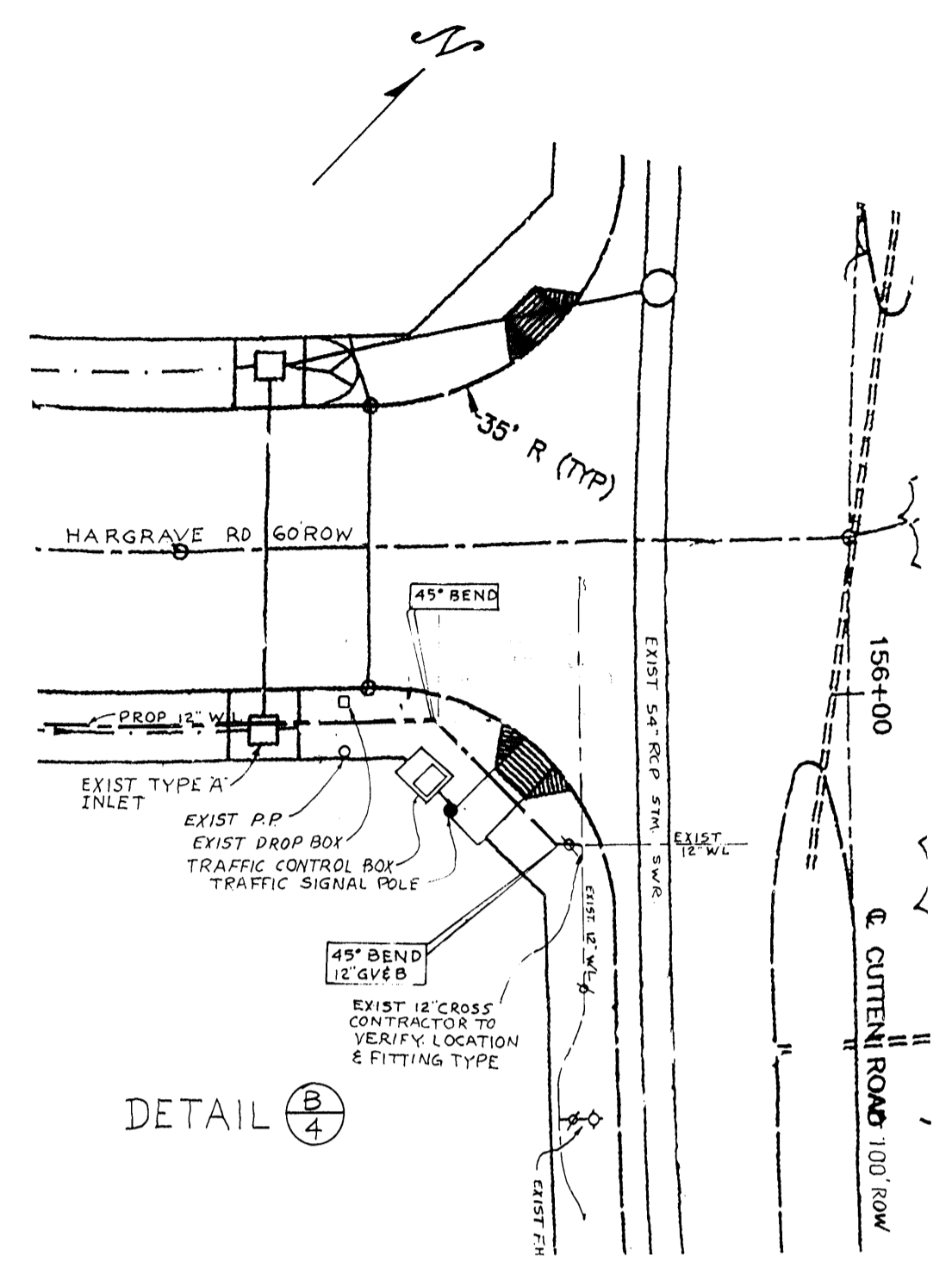
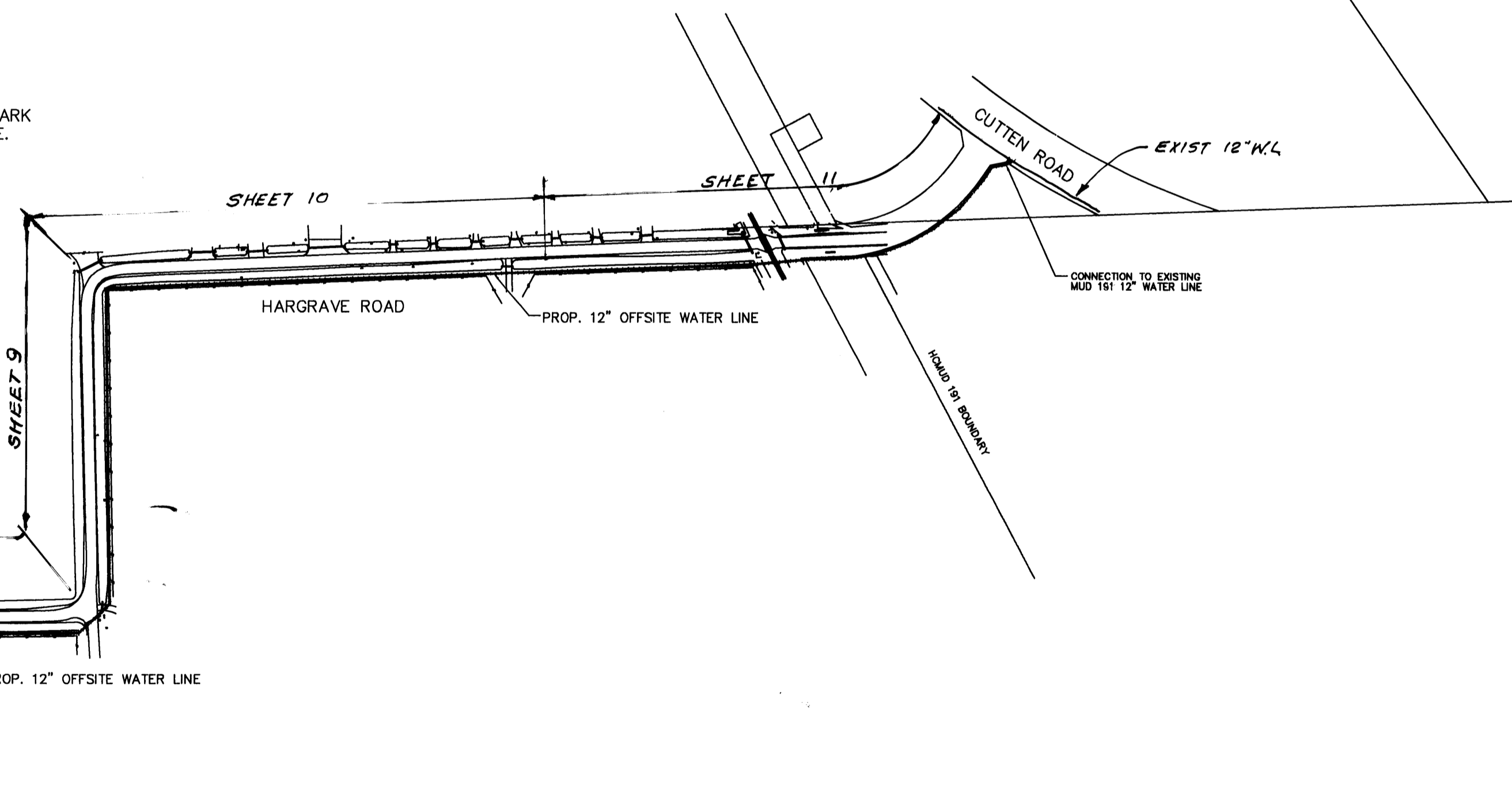


NOTE: PRESTONWOOD FOREST PARK SERVED BY OFFSITE WATER LINE.



BENCH MARK
 BENCH MARK: NATIONAL GEODETIC SURVEY MARKER
 Y1216, 1973 ADJ., ELEV. = 125.994
 Y1216, 1978 ADJ., ELEV. = 125.406
 Y1216, 1988 ADJ., ELEV. = 123.94 (THIS ADJUSTMENT WAS USED FOR CUTTEN ROAD)
 ELEVATIONS SHOWN HEREON ARE BASED ON 1973 ADJUSTMENT

TBM #1: SET RAILROAD SPIKE ON SOUTH SIDE OF 14" TALLOW APPROXIMATELY 31 FEET NORTH OF THE END OF CENTERFIELD DRIVE
 ELEVATION = 128.60

TBM #2: SET RAILROAD SPIKE ON SOUTH SIDE OF POWER POLE WITH TRANSFORMER ON WEST SIDE OF PRIVATE ROAD AND 200 FEET NORTH OF PRIVATE ROAD
 ELEVATION = 130.62

TBM #3: SET RAILROAD SPIKE ON EAST SIDE OF POWER POLE ON WEST SIDE OF HARGRAVE ROAD AND NORTH OF THE INTERSECTION OF DOTSON ROAD & HARGRAVE ROAD
 ELEVATION = 128.04

TBM #4: RAILROAD SPIKE ON EAST SIDE OF POWER POLE #13629 ON THE WEST SIDE OF HARGRAVE ROAD APPROXIMATELY 30 FEET NORTH OF 18 INCH R.C.P. AT GRAVEL DRIVE FROM 13627 HARGRAVE ROAD
 ELEVATION = 130.56

Rev.	Date	Description	App.

PRIVATE UTILITY LINES SHOWN

John Galt 3/1/2000
 RELIANT ENERGIES, INC./ENTEX

Mike Bolin 3/7/00
 SOUTHWESTERN BELL TELEPHONE CO.
 Valid for One Year Only

John Galt 3/1/2000
 RELIANT ENERGIES, INC./H&P CO.
 Approval Only for Crossing Underground Ductlines Unless Noted. Valid at Time of Review Only.

CITY OF HOUSTON
 DEPARTMENT OF PUBLIC WORKS AND ENGINEERING

REVIEWED BY:

PRIVATELY FUNDED PUBLIC WORKS	CITY FUNDED PUBLIC WORKS
<i>Walter Williams</i> 3-2-00 WATER	PROJECT MANAGER
<i>Walter Williams</i> 3-2-00 WASTEWATER	CONSTRUCTION
<i>Walter Williams</i> 1-8-2-00 STORM WATER	CHIEF ENGINEER
STREET AND BRIDGE	

OTHER APPROVAL

TRAFFIC AND TRANSPORTATION SPONSOR DEPARTMENT

CITY ENGINEER DATE
Walter Williams 3-8-2000

DIRECTOR OF PUBLIC WORKS AND ENGINEERING DATE

SUBMITTED: _____ DESIGNED BY: B K WILSON
 SCALE: 1" = 200' DRAWN BY: BILL DORRIS
 DATE: MARCH 2000 SHEET NO. 4 OF 14 SHEETS
 SURVEY BY: _____ CITY DWG. NO. OVRAL2.DWG
 F B NO: 482U

Bobby K. Wilson
 03-02-00

HARRIS COUNTY MUD 191
 OVERALL LAYOUT
 HIGHLAND TIMBERS SECTIONS 1 & 2
 & CHAMPIONS ARBOR &
 PRESTONWOOD FOREST PARK
 OFFSITE WATER LINE

PCI PROVIDENT CONSULTING, INC.
 1200 WEST 11TH ST.
 HOUSTON, TEXAS 77008
 (713)802-1019