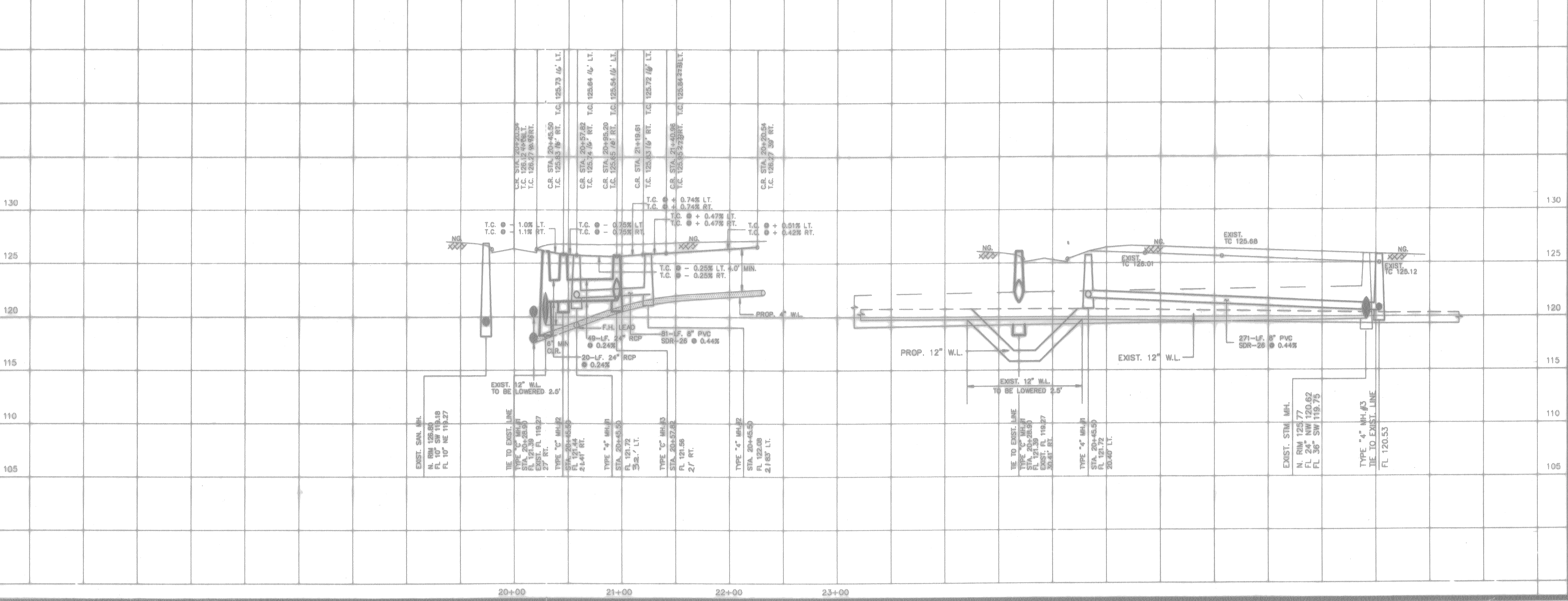


**PINNACLE PLACE
(PRIVATE STREET)**



H.C.M.U.D. NO. 191
CHAMPIONS CENTRE ESTATES
SECTION ONE
FILM CODE NO. 349036
H.C.M.R.

BENCH MARK

BENCH MARK: NGS DISK STAN...
BRASS DISK AT CENTERLINE...
1ST TOWER NORTH OF F.M.
ELEVATION 125.99 1973

APPROVED: *Robert A. Castle*
for County Engineer
Date: 7-10-96

Water & Sanitary Sewer Lines Approved as to Location Only
The Above Authorization is Valid for 1 Year Only

Rev.	Date	Description	App.
8-13-96		ADDED ENTRANCE GATE	
6-4-96		ADD SAN. SWR. W/L. #3 AND RE-ROUTE 8" S.S.L. TO TIE-IN EXIST. SAN. SWR. STUB.	

PRIVATE UTILITY LINES SHOWN
Calista K. Waterwall 4/18/96
ENTEX, INC.
John P. ... 6-18-96
SOUTHWESTERN BELL TELEPHONE CO.
Valid for One Year Only
Theresa ... 7-29-96
HOUSTON LIGHTING & POWER CO.
Approval Only for Crossing Underground
Ductlines Unless Noted. Valid at Time of Review Only.

CITY OF HOUSTON
DEPARTMENT OF PUBLIC WORKS & ENGINEERING
ENGINEERING, CONSTRUCTION AND REAL ESTATE GROUP

SECTION APPROVALS

<i>John Waterwall</i>	WATER ENGINEERING	TRAFFIC AND SIGNAL ENGINEERING
<i>Robert A. Castle</i>	WASTEWATER ENGINEERING	STREET, BRIDGE AND RIGHT-OF-WAY ENGINEERING
<i>Michael ...</i>	STORM SEWER ENGINEERING	CONSTRUCTION

OTHER DEPARTMENTS

<i>Robert A. Castle</i>	PLANNING AND DEVELOPMENT	SPONSOR DEPARTMENT
<i>John ...</i>	CITY ENGINEER	DATE: 6/20/96
<i>John ...</i>	DIRECTOR OF PUBLIC WORKS AND ENGINEERING	DATE: 7/1/96

SUBMITTED:	H: 1"=50'	DESIGNED BY:	TM
SCALE:	V: 1"=5'	DRAWN BY:	TM
DATE:	MARCH 1996	SHEET NO. 6 OF 14 SHEETS	
SURVEY BY:		DWG. NO. PINNACLE.DWG	
JOB NO.:	440-U		

**PLAN & PROFILE
PINNACLE PLACE
AND PARAGON DRIVE**