

BENCH MARK

BENCH MARK: NGS STAMPED Y1216 1973
BRASS DISK AT CENTERLINE OF H.L.P. TOWER
1ST TOWER NORTH OF F.M. 1969
ELEVATION 125.99 1973 ADJ.

LEGEND

- Exist. Contours
- Exist. Storm Sewer Line & Manhole
- Exist. Inlet
- PROP. STORM SEWER LINE & MANHOLE
- PROP. INLET
- DRAINAGE AREA DIVIDE
- AREA AT INLET IN ACRES
- ⬡ AREA CONTRIBUTION TO LINE IN ACRES
- ⊖ STABILIZED CONSTRUCTION EXIT w/CONC. TRUCK WASHOUT SITE
- INLET PROTECTION LOCATION

Rev.	Date	Description	App.

PRIVATE UTILITY LINES SHOWN

Edwards H. Waterwallt	6/18/96
ENTEX, INC.	6-18-96
SOUTHWESTERN BELL TELEPHONE CO.	7-29-96
HOUSTON LIGHTING & POWER CO.	

Valid for One Year Only
Approval Only for Crossing Underground
Ductlines Unless Noted. Valid at Time of Review Only.

CITY OF HOUSTON
DEPARTMENT OF PUBLIC WORKS & ENGINEERING
ENGINEERING, CONSTRUCTION AND REAL ESTATE GROUP

SECTION APPROVALS

WATER ENGINEERING	TRAFFIC AND SIGNAL ENGINEERING
WASTEWATER ENGINEERING	STREET, BRIDGE AND RIGHT-OF-WAY ENGINEERING
STORM SEWER ENGINEERING	CONSTRUCTION

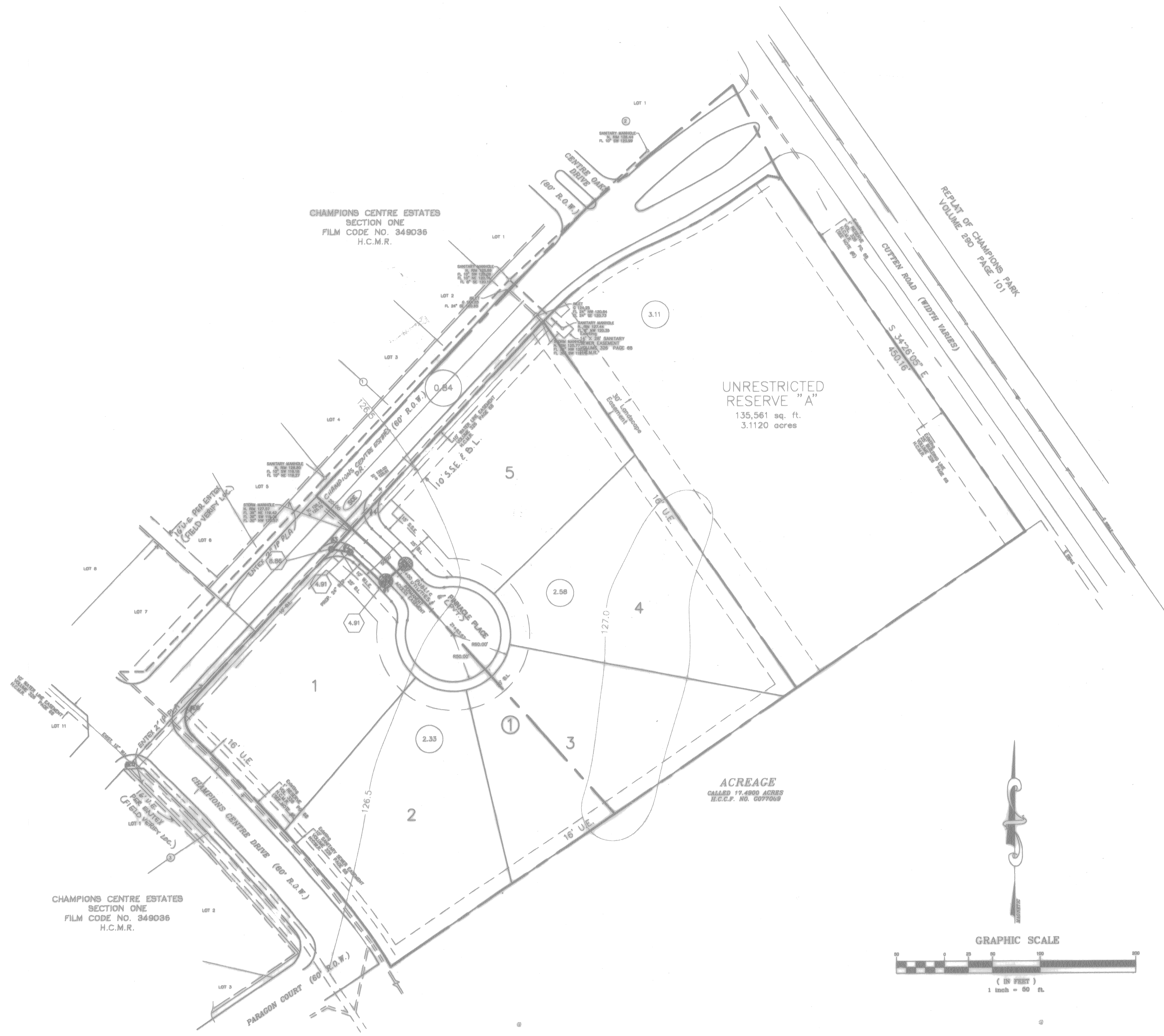
OTHER DEPARTMENTS

PLANNING AND DEVELOPMENT	SPONSOR DEPARTMENT
CITY ENGINEER	DATE
DIRECTOR OF PUBLIC WORKS AND ENGINEERING	DATE

SUBMITTED: _____	DESIGNED BY: TIM
SCALE: 1" = 50'	DRAWN BY: TIM
DATE: MARCH 1998	SHEET NO. 7 OF 14 SHEETS
SURVEY BY: _____	CITY DWG. NO.
JOB NO: 440-U	

POLLUTION CONTROL OVERALL LAYOUT

PEI PROVIDENT ENGINEERS, INC.
12200 N.W. FRWY, Suite 210
Houston, Texas 77092



CHAMPIONS CENTRE ESTATES
SECTION ONE
FILM CODE NO. 349036
H.C.M.R.

CHAMPIONS CENTRE ESTATES
SECTION ONE
FILM CODE NO. 349036
H.C.M.R.

ACREAGE
CALLED 17,490 ACRES
H.C.F. NO. 0077069