

THIS PLAN IS THE PROPERTY OF THE ENGINEER AND IS NOT TO BE REPRODUCED OR COPIED IN ANY MANNER WITHOUT THE WRITTEN CONSENT OF THE ENGINEER. THE ENGINEER'S LIABILITY IS LIMITED TO THE PROFESSIONAL SERVICES PROVIDED HEREON. THE USER OF THIS PLAN ASSUMES ALL LIABILITY FOR ANY DAMAGE OR INJURY RESULTING FROM THE USE OF THIS PLAN.

CONSTRUCTION PLAN FOR  
**HARRIS COUNTY MUDFLOW**  
**PRESTONWOOD PARK SECTION 1**  
 HARRIS COUNTY, TEXAS  
**PROPOSED DRAINAGE AREA MAP**

NO. DATE BY REVISION

NA ENR INC. 1/4/00

NA SOUTHWOOD DEVELOPMENT CO. 1/4/00

NA HARRIS COUNTY ENGINEERING & POWER CO. 1/4/00

NA INTERSTATE ENGINEERING & ARCHITECTURE 1/4/00

**HARRIS COUNTY**  
 PUBLIC INFRASTRUCTURE DEPARTMENT

APPROVED: [Signature]

Date: [Blank]

Approval implied for paving and drainage within this limit. ROW and/or easement, all other improvements or EIR & other jurisdiction are approved as to location only.

The above authorization is valid for one (1) year only.

**CITY OF HOUSTON**  
 DEPARTMENT OF PUBLIC WORKS AND ENGINEERING

REVIEWED BY: [Signature]

REVIEWED BY: [Signature]

REVIEWED BY: [Signature]

REVIEWED BY: [Signature]

TRAFFIC AND TRANSPORTATION DEPARTMENT

CITY ENGINEER: [Signature]

DISTRICT ENGINEER: [Signature]

SUBMITTED: [Blank]

SCALE: HORIZ. 1" = 100'

DATE: FEBRUARY 1, 2000

SURVEY BY: JOHN HILGARD

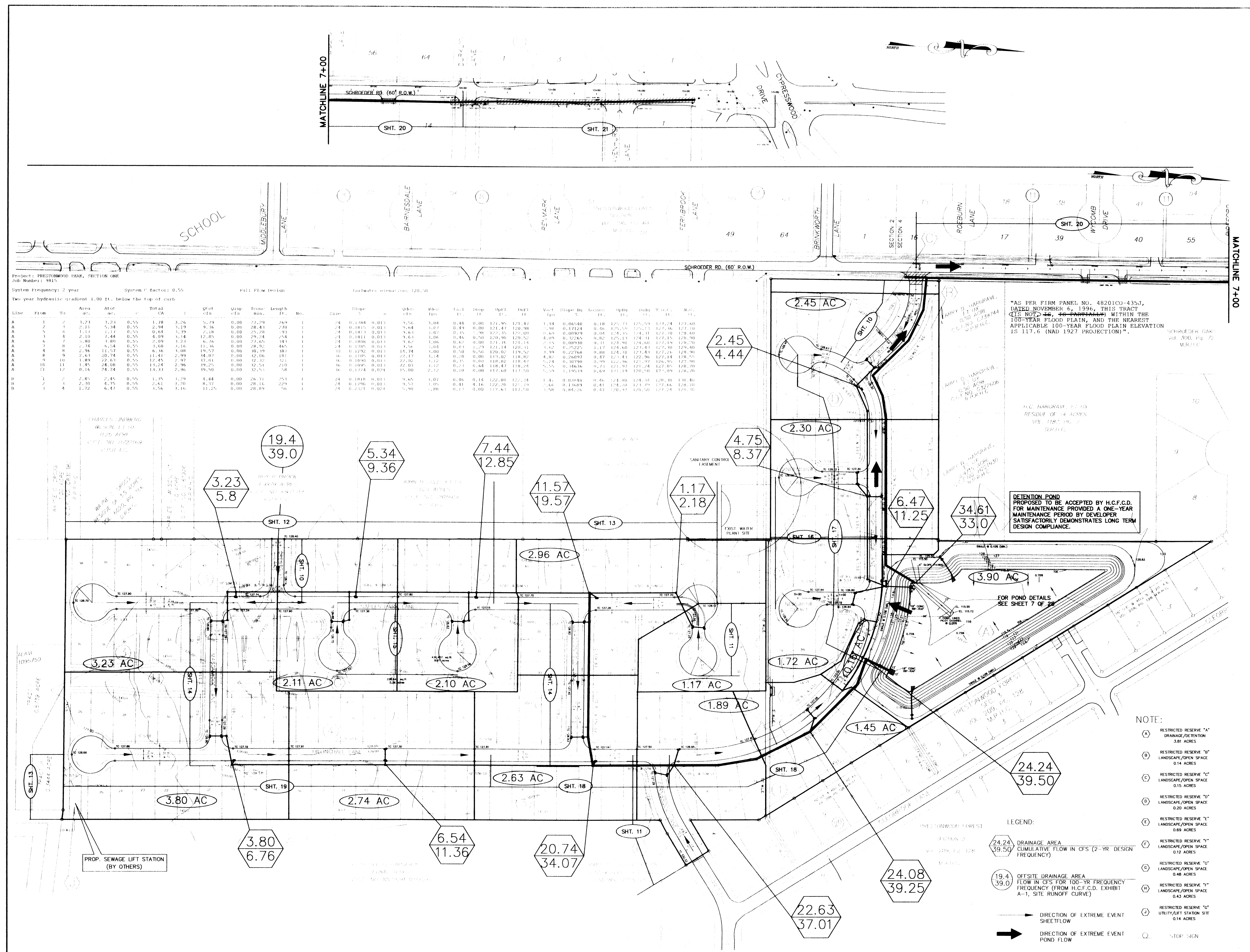
LEGEND:

- (A) RESTRICTED RESERVE "A" DRAINAGE/RETENTION 3.81 ACRES
- (B) RESTRICTED RESERVE "B" LANDSCAPE/OPEN SPACE 0.14 ACRES
- (C) RESTRICTED RESERVE "C" LANDSCAPE/OPEN SPACE 0.15 ACRES
- (D) RESTRICTED RESERVE "D" LANDSCAPE/OPEN SPACE 0.20 ACRES
- (E) RESTRICTED RESERVE "E" LANDSCAPE/OPEN SPACE 0.69 ACRES
- (F) RESTRICTED RESERVE "F" LANDSCAPE/OPEN SPACE 0.12 ACRES
- (G) RESTRICTED RESERVE "G" LANDSCAPE/OPEN SPACE 0.48 ACRES
- (H) RESTRICTED RESERVE "H" LANDSCAPE/OPEN SPACE 0.43 ACRES
- (I) RESTRICTED RESERVE "I" UTILITY/STATION SITE 0.14 ACRES
- (J) STOP SIGN

CADD DATE: 1/15/00

FILE NO: 9905

ORIGINAL SCALE: AS SHOWN FOR REDUCED PLANS



"AS PER FIRM PANEL NO. 48201CO-435J, DATED NOVEMBER 6, 1996, THIS TRACT (SEE MAP) IS WITHIN THE 100-YEAR FLOOD PLAIN, AND THE NEAREST APPLICABLE 100-YEAR FLOOD PLAIN ELEVATION IS 117.6 (NAD 1927 PROJECTION)".

DETENTION POND PROPOSED TO BE ACCEPTED BY H.C.F.C.D. FOR MAINTENANCE PROVIDED A ONE-YEAR MAINTENANCE PERIOD BY DEVELOPER SATISFACTORILY DEMONSTRATES LONG TERM DESIGN COMPLIANCE.

FOR POND DETAILS SEE SHEET 7 OF 28