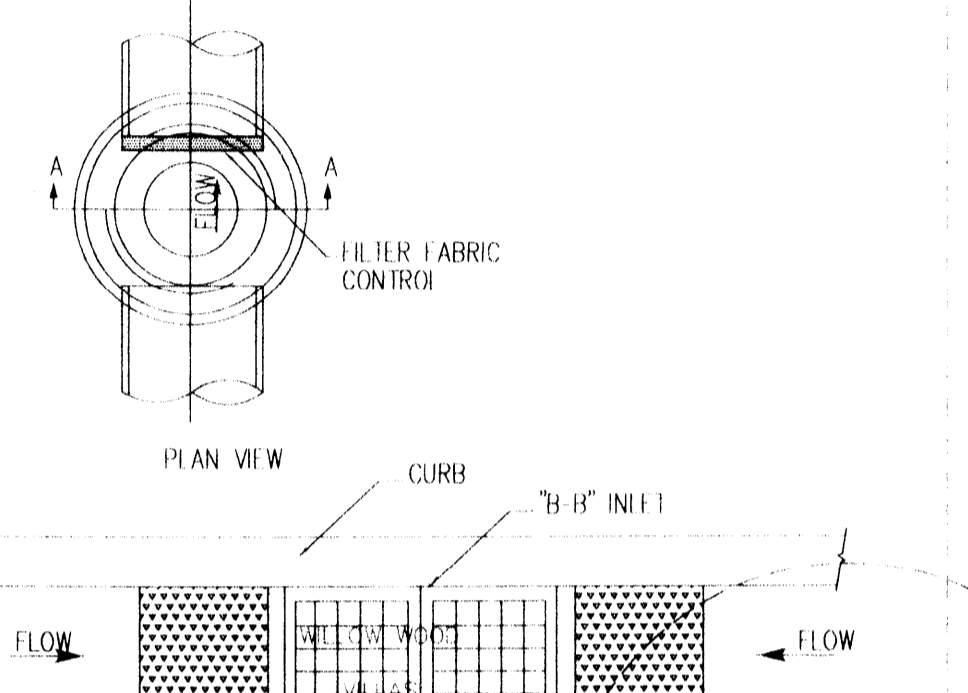
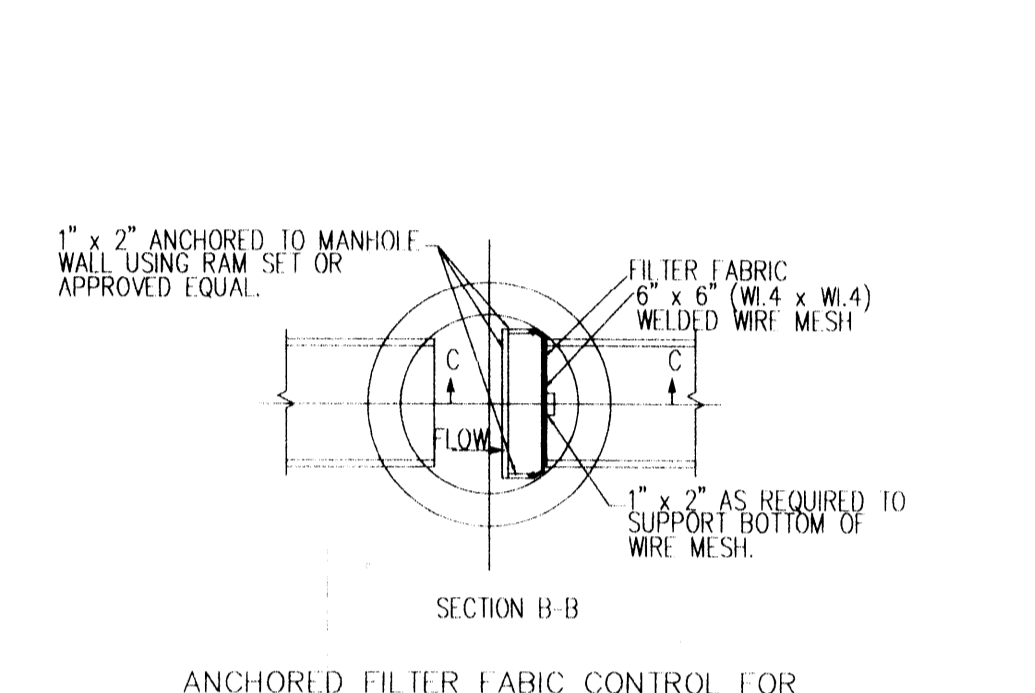
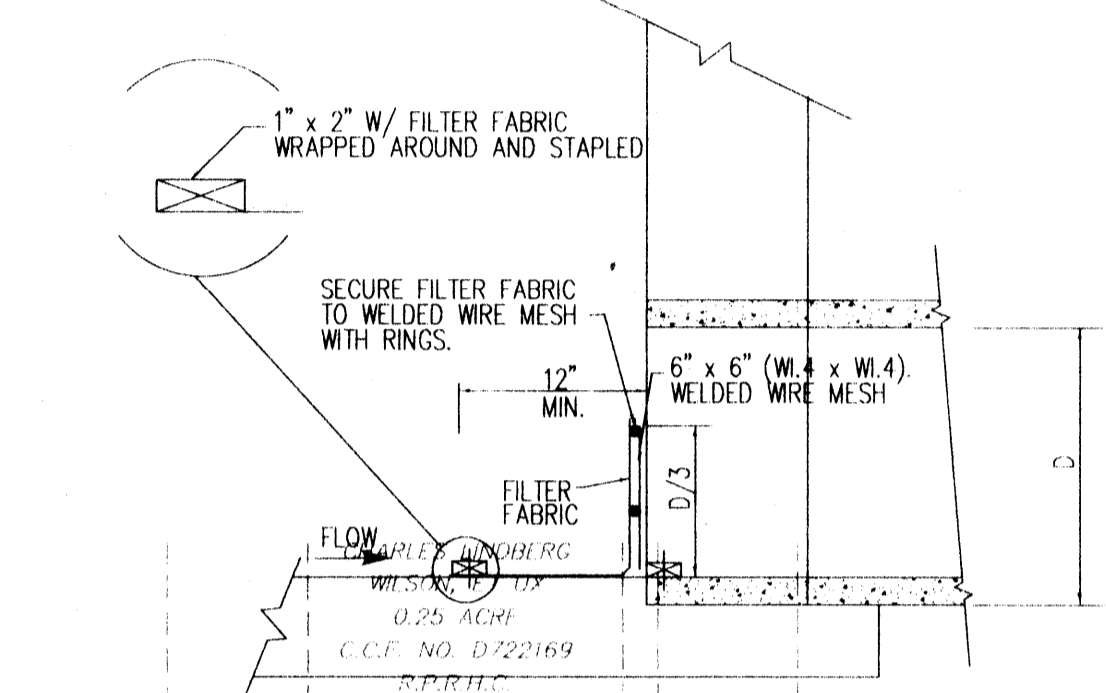
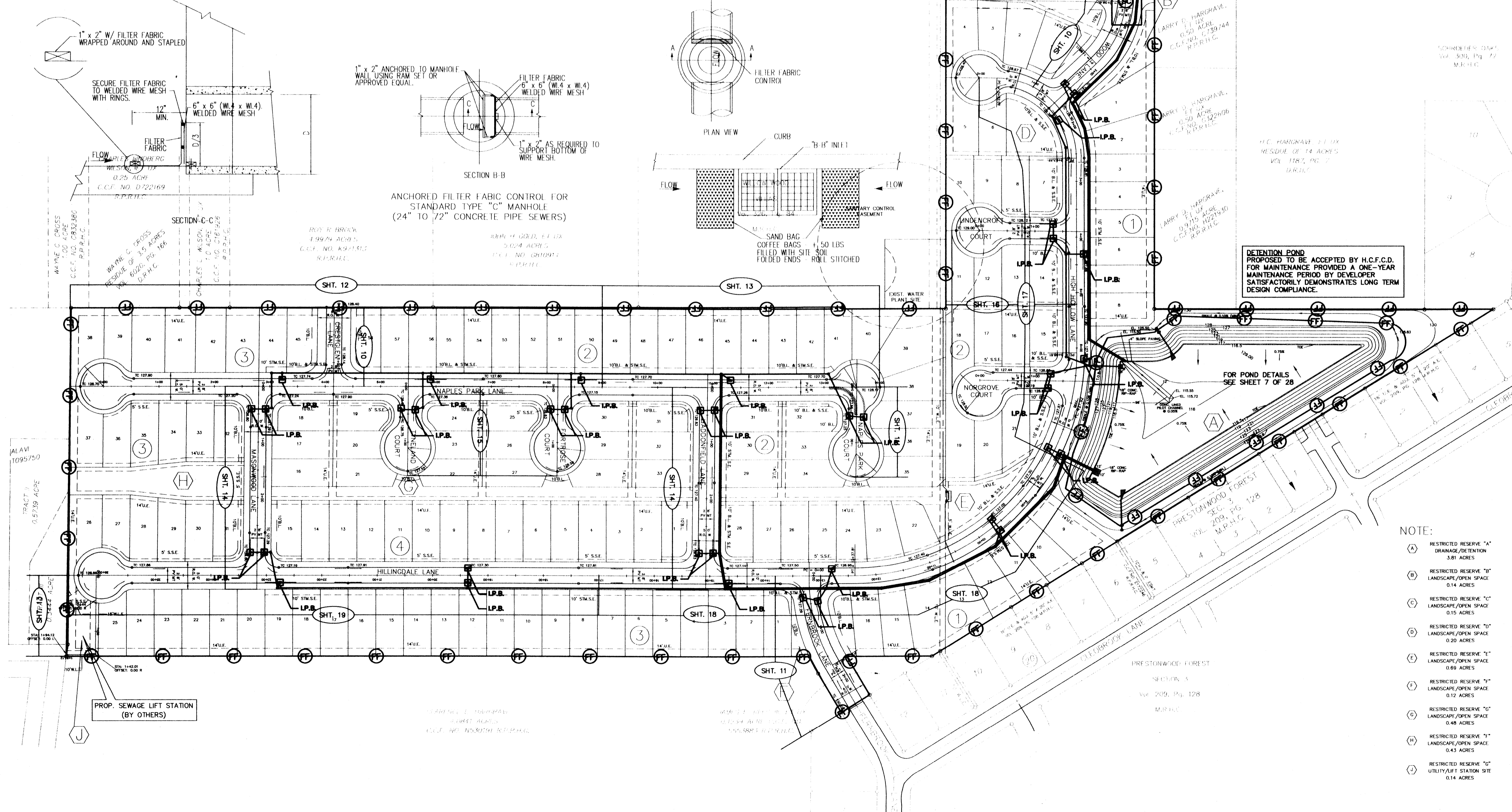
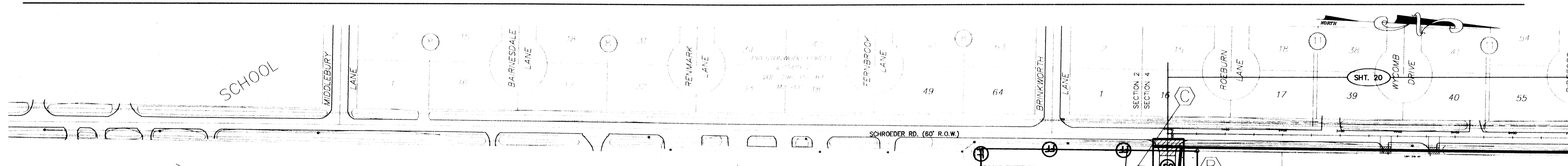
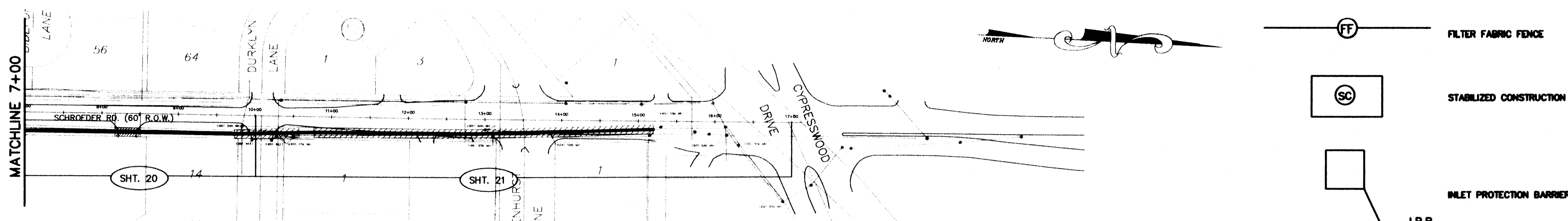


GENERAL NOTE:

- CONTRACTOR SHALL DETERMINE EXACT LOCATIONS AND NUMBER OF STABILIZED CONSTRUCTION EXITS.
- CONTRACTOR SHALL PROVIDE CONTINUOUS STREET CLEANING THROUGHOUT THE DURATION OF THE CONSTRUCTION PERIOD TO PROTECT EXISTING STREETS FROM VEHICLE TRACKING OFF-SITE.
- CONTRACTOR SHALL BE RESPONSIBLE FOR INSTALLING SEDIMENTATION CONTROL SYSTEMS AROUND THE PERIMETER OF STORAGE AREAS, CONSTRUCTION TRAILERS, PARKING AREAS, SPILL DISPOSAL SITES, ETC., UNLESS AREA DRAINS TO EXISTING SEDIMENTATION CONTROLLED SYSTEMS.
- CONTRACTOR SHALL HYDRO-MULCH SEED ALL DISTURBED AREAS WITHIN 24 HRS AFTER FINAL GRADING AND INSTALL ONE CONTINUOUS ROW OF SOD BEHIND ALL PROPOSED CURBS AND INLETS.
- CONTRACTOR SHALL CONSTRUCT FILTER FABRIC FENCE AS SHOWN ON HARRIS COUNTY DRAWING NUMBER 708.
- CONTRACTOR SHALL CONSTRUCT ANCHORED FILTER FABRIC CONTROL FOR STANDARD TYPE "C" MANHOLE (24" TO 72" CONCRETE PIPE SEWERS) AS SHOWN ON SHEET.
- SEE STORM WATER POLLUTION PREVENTION PLAN REPORT FOR ADDITIONAL INSTRUCTIONS.



DETENTION POND PROPOSED TO BE ACCEPTED BY H.C.F.C.D. FOR MAINTENANCE PROVIDED A ONE-YEAR MAINTENANCE PERIOD BY DEVELOPER SATISFACTORILY DEMONSTRATES LONG TERM DESIGN COMPLIANCE.

NOTE:

- (A) RESTRICTED RESERVE "A" DRAINAGE/RETENTION 3.91 ACRES
- (B) RESTRICTED RESERVE "B" LANDSCAPE/OPEN SPACE 0.14 ACRES
- (C) RESTRICTED RESERVE "C" LANDSCAPE/OPEN SPACE 0.15 ACRES
- (D) RESTRICTED RESERVE "D" LANDSCAPE/OPEN SPACE 0.20 ACRES
- (E) RESTRICTED RESERVE "E" LANDSCAPE/OPEN SPACE 0.69 ACRES
- (F) RESTRICTED RESERVE "F" LANDSCAPE/OPEN SPACE 0.12 ACRES
- (G) RESTRICTED RESERVE "G" LANDSCAPE/OPEN SPACE 0.49 ACRES
- (H) RESTRICTED RESERVE "H" LANDSCAPE/OPEN SPACE 0.43 ACRES
- (I) RESTRICTED RESERVE "I" UTILITY/RT STATION SITE 0.14 ACRES

BENCHMARK: RM192, Bronze disk set in top of concrete post, approx. 8.7 miles Southeast on Missouri-Kansas-Texas Railroad from station at Tarrant approx. 41 feet Northwest of Northwest rail, approx. 2 feet Northeast of fence, and approx. level with rail, 1973 adjustment, Elev. 130.16

NO.	DATE	REVISIONS

CONSTRUCTION PLANS FOR HARRIS COUNTY M.U.D. NO. 111 PRESTONWOOD PARK SECTION 1 HARRIS COUNTY, TEXAS

PROPOSED STORM WATER POLLUTION PREVENTION PLAN PRIVATE UTILITY LINES SHOWN

NA ENTEX, INC. 1/4/00 DATE

NA SOUTHWESTERN BELL TELEPHONE CO. 1/4/00 DATE VALID FOR ONE YEAR ONLY

NA HOUSTON LIGHTING & POWER CO. 1/4/00 DATE APPROVAL ONLY FOR CROSSING UNDERGROUND DUCT LINES UNLESS NOTED. VALID AT TIME OF REVIEW ONLY

HARRIS COUNTY PUBLIC INFRASTRUCTURE DEPARTMENT

APPROVED: _____ for Assistant County Engineer

Date: _____

Approval implied for paving and drainage facilities within Harris County R.O.W. and/or jurisdiction. All other improvements in H.C.R.O.W. and/or jurisdiction are approved as to location only.

The above authorization is valid for one (1) year only.

CITY OF HOUSTON DEPARTMENT OF PUBLIC WORKS AND ENGINEERING

REVIEWED BY: WATER DIVISION, PROJECT MANAGER; WASTE WATER DIVISION, CHIEF ENGINEER; STREET & BRIDGE DIVISION, CHIEF ENGINEER

OTHER APPROVAL: TRAFFIC AND TRANSPORTATION, SPONSOR DEPARTMENT

CITY ENGINEER: Mark C. ... 1-11-2000 DATE

DIRECTOR OF PUBLIC WORKS AND ENGINEERING: ... DATE

SUBMITTED: SCALE: HORIZ. 1" = 100' VERT. DATE: DECEMBER, 1999 SURVEY BY: JOHN THOMAS CITY DWG NO. DESIGNED BY: S.A.J. DRAWN BY: T.B.M. SHEET NO. 6 OF 28 (REV. 1) CITY DWG NO.

CADD DWG. FILE: 115-484 JOB NO: 9815 ORIGINAL SCALE IN INCHES FOR REDUCED PLANS