

EM-97 Branch and set in place of ...
 post, approx. 2.5 miles southwest of ...
 Harris County, Texas. Highway from stationing ...
 approx. 41 feet Northeast of location ...
 approx. 2 feet Northeast of center line ...
 level with rail 1973 adjustment. The ...

NO.	DATE	REVISIONS

CONSTRUCTION PLANS
 FOR
 HARRIS COUNTY M.U.D. NO. 119
**PRESTONWOOD PARK
 SECTION 1**
 HARRIS COUNTY, TEXAS
 PROPOSED
LOT GRADING PLAN
 PRIVATE UTILITY LINES SHOWN

ENTEX, INC. DATE: _____
 SOUTHWESTERN BELL TELEPHONE CO. DATE: _____
 VALID FOR ONE YEAR ONLY
 HOUSTON LIGHTING & POWER CO. DATE: _____
 APPROVAL ONLY FOR CROSSING UNDERGROUND
 DUCT LINES UNLESS NOTED. VALID AT TIME OF REVIEW ONLY

HARRIS COUNTY
 PUBLIC INFRASTRUCTURE DEPARTMENT

APPROVED: _____
 for Assistant County Engineer

Date: _____
 Approval implied for paving and drainage facilities within Harris County
 R.O.W. and/or jurisdiction. All other improvements in H.C.R.O.W. and/or
 jurisdiction are approved as to location only.

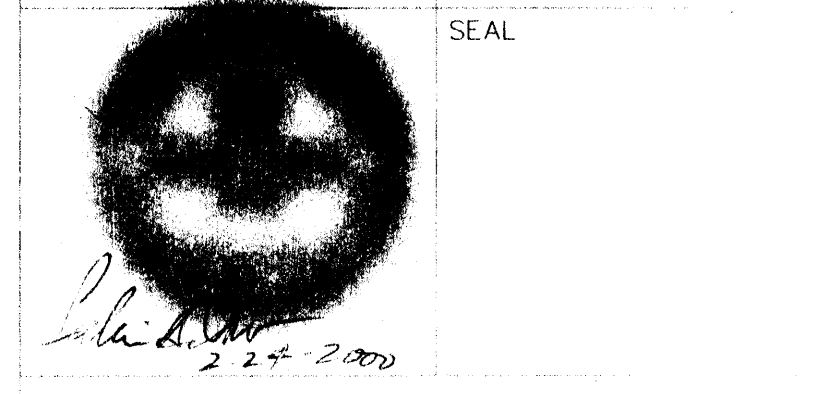
The above authorization is valid for one (1) year only.
CITY OF HOUSTON
 DEPARTMENT OF PUBLIC WORKS AND ENGINEERING

REVIEWED BY:
 PRIVATELY FUNDED PUBLIC WORKS CITY FUNDED PUBLIC WORKS
 WATER PROJECT MANAGER
 WASTEWATER CONSTRUCTION
 STORM WATER CHIEF ENGINEER
 STREET & BRIDGE OTHER APPROVAL

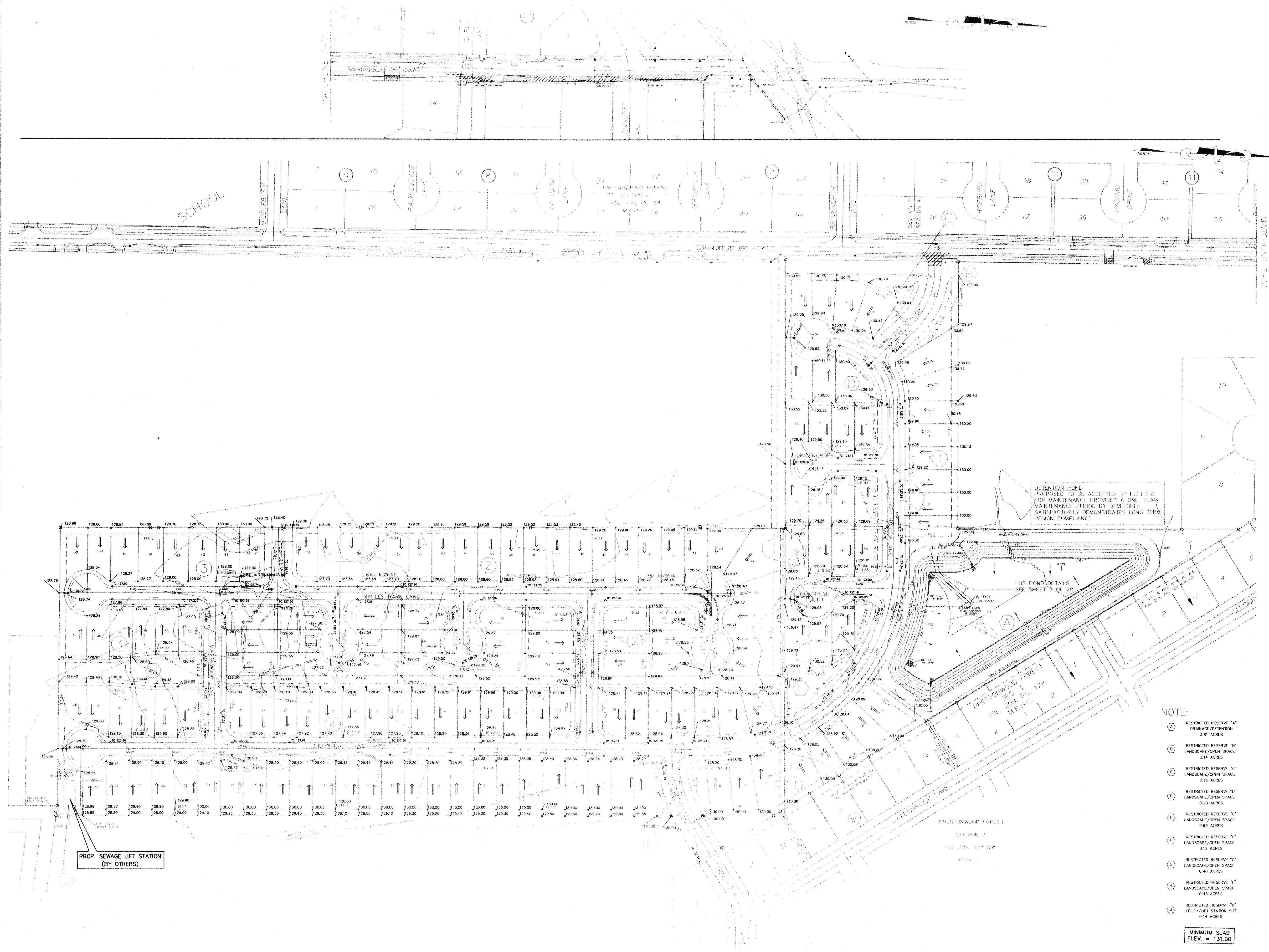
TRAFFIC AND TRANSPORTATION SPONSOR DEPARTMENT
 CITY ENGINEER DATE: _____

DIRECTOR OF PUBLIC WORKS AND ENGINEERING DATE: _____

SUBMITTED: DESIGNED BY: S.A.J.
 SCALE: HORIZ. 1" = 100' DRAWN BY: T.H.M.
 VERT. _____
 DATE: JANUARY, 2000 SHEET NO. 8 OF 26 SHEETS
 SURVEY BY: JOHN THOMAS CITY DWG NO. _____



CADD DWG. FILE: 115_886 JOB NO. 9510
 ORIGINAL SCALE IN INCHES
 FOR REDUCED PLANS



- NOTE:
- (A) RESTRICTED RESERVE "A" DRAINAGE/RETENTION 0.81 ACRES
 - (B) RESTRICTED RESERVE "B" LANDSCAPE/OPEN SPACE 0.14 ACRES
 - (C) RESTRICTED RESERVE "C" LANDSCAPE/OPEN SPACE 0.15 ACRES
 - (D) RESTRICTED RESERVE "D" LANDSCAPE/OPEN SPACE 0.20 ACRES
 - (E) RESTRICTED RESERVE "E" LANDSCAPE/OPEN SPACE 0.69 ACRES
 - (F) RESTRICTED RESERVE "F" LANDSCAPE/OPEN SPACE 0.12 ACRES
 - (G) RESTRICTED RESERVE "G" LANDSCAPE/OPEN SPACE 0.48 ACRES
 - (H) RESTRICTED RESERVE "H" LANDSCAPE/OPEN SPACE 0.43 ACRES
 - (I) RESTRICTED RESERVE "I" UTILITY/LIFT STATION SIFT 0.14 ACRES
- MINIMUM SLAB ELEV. = 131.00