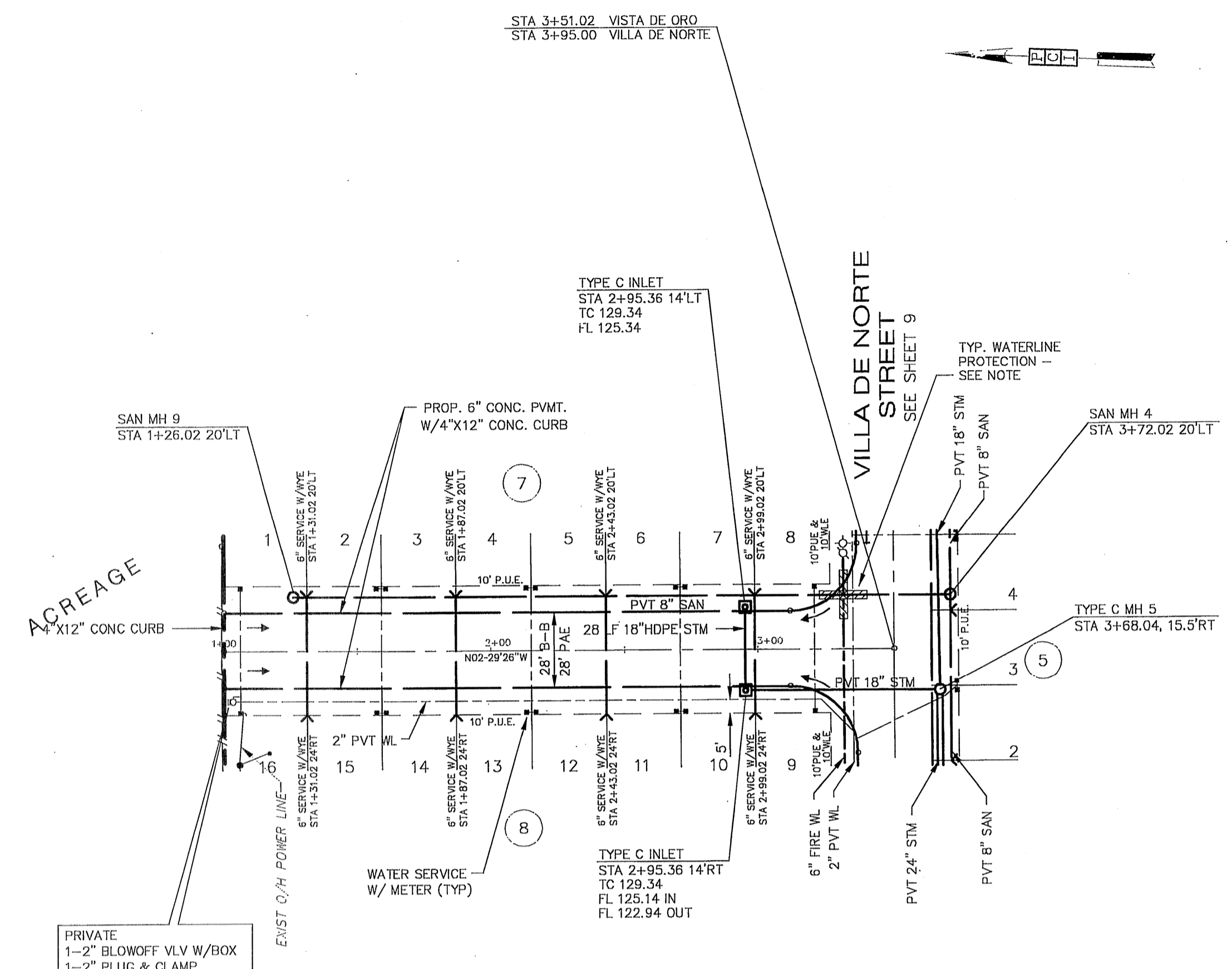


VILLA PALMAS STREET
PRIVATE STREET



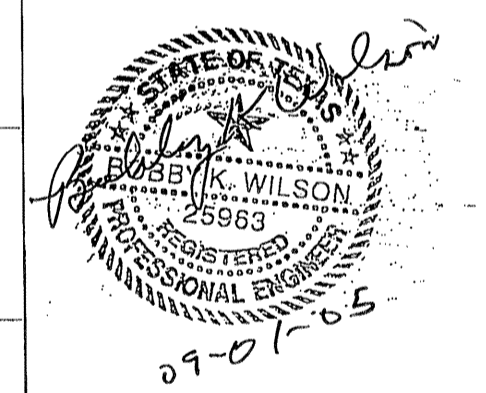
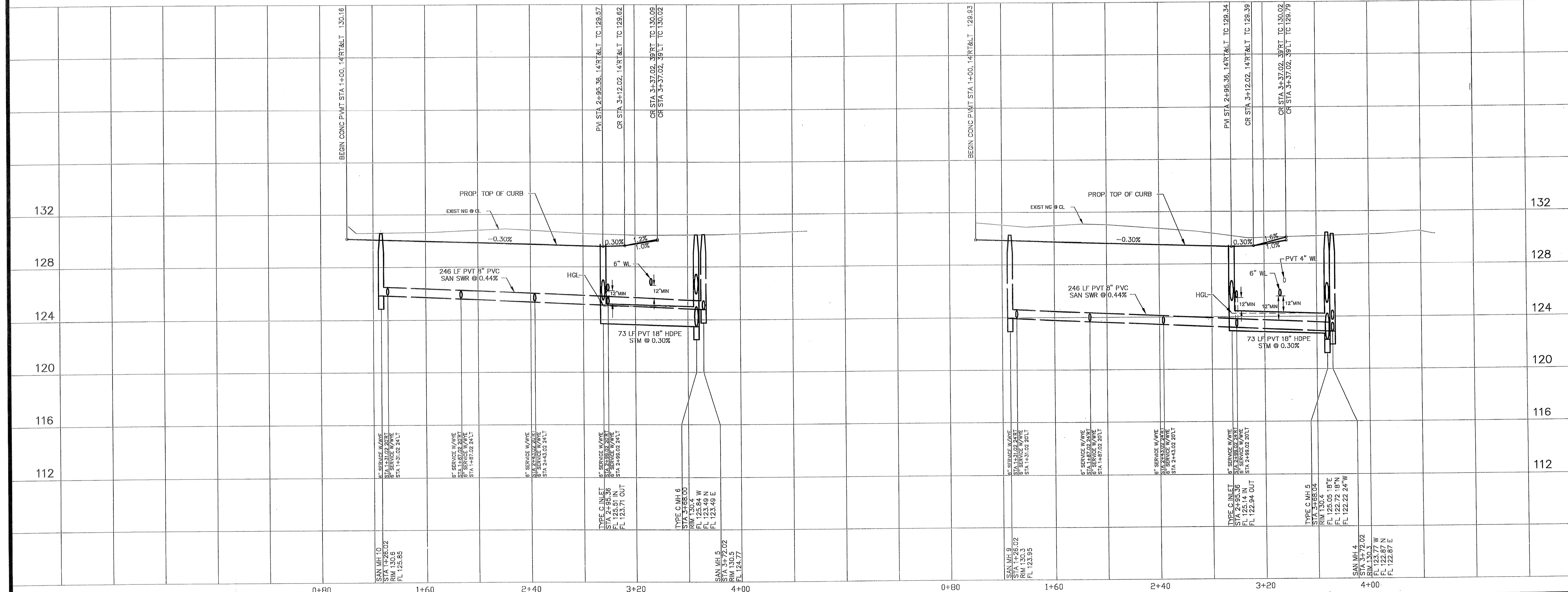
VISTA DE ORO STREET
PRIVATE STREET

BENCH MARK

BENCHMARK: NATIONAL GEODETIC SURVEY MARKER
 Y1216, 1973 ADJ., ELEV = 125.994
 Y1216, 1978 ADJ., ELEV = 125.406
 Y1216, 1988 ADJ., ELEV = 123.94
 ELEVATIONS ARE BASED ON 1973 ADJUSTMENT

FILL NOTE
 Fill to be placed in maximum 8" lifts to 95% Standard Proctor Density ± 2% optimum moisture. Existing swales and ponds to shall be cleaned and mucked free from vegetation prior to placement of fill material.

WATERLINE PROTECTION NOTE:
 When sanitary sewer and waterline cross, both shall be constructed in strict accordance with City of Houston "Infrastructure Design Manual" Table 7.4: Protection Requirements of Water Line - Sanitary Sewer Crossings. SEE GENERAL NOTES SHEET



PROVIDENT CONSULTING, INC.
 1405 ALLSTON ST.
 HOUSTON, TEXAS 77008
 (713) 802-1019



PRIVATE UTILITY LINES SHOWN

CENTERPOINT ENERGY, ENTEX

SBC VALID FOR ONE YEAR
 APPROVED ONLY FOR UNDERGROUND FACILITIES

CENTERPOINT ENERGY
 APPROVED ONLY FOR CROSSING UNDERGROUND DUCTILES
 UNLESS NOTED VALID AT TIME OF REVIEW ONLY.

VILLAS AT WILLOWBROOK
 in
 HARRIS COUNTY MUD 191
 HARRIS COUNTY, TEXAS

PLAN & PROFILE
VILLA PALMAS STREET
 PLAN & PROFILE
VISTA DE ORO STREET

WATER	WASTEWATER	TRAFFIC
ST. & BRIDGE	STORMWATER	SWO

FILE NO:

DRAWING SCALE:
 1" = 40'

VERT: 4' HORIZ: 40'

SHEET No: 11 OF 24

40820
 CITY ENGINEERING NUMBER
 HOUSTON, TEXAS