

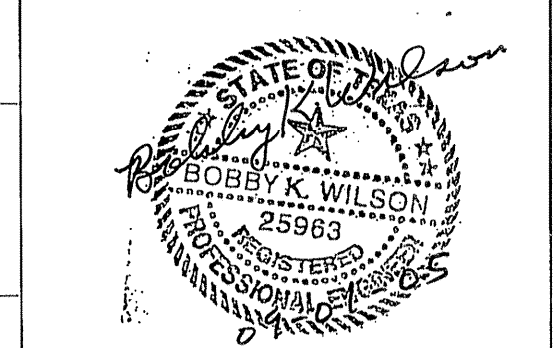
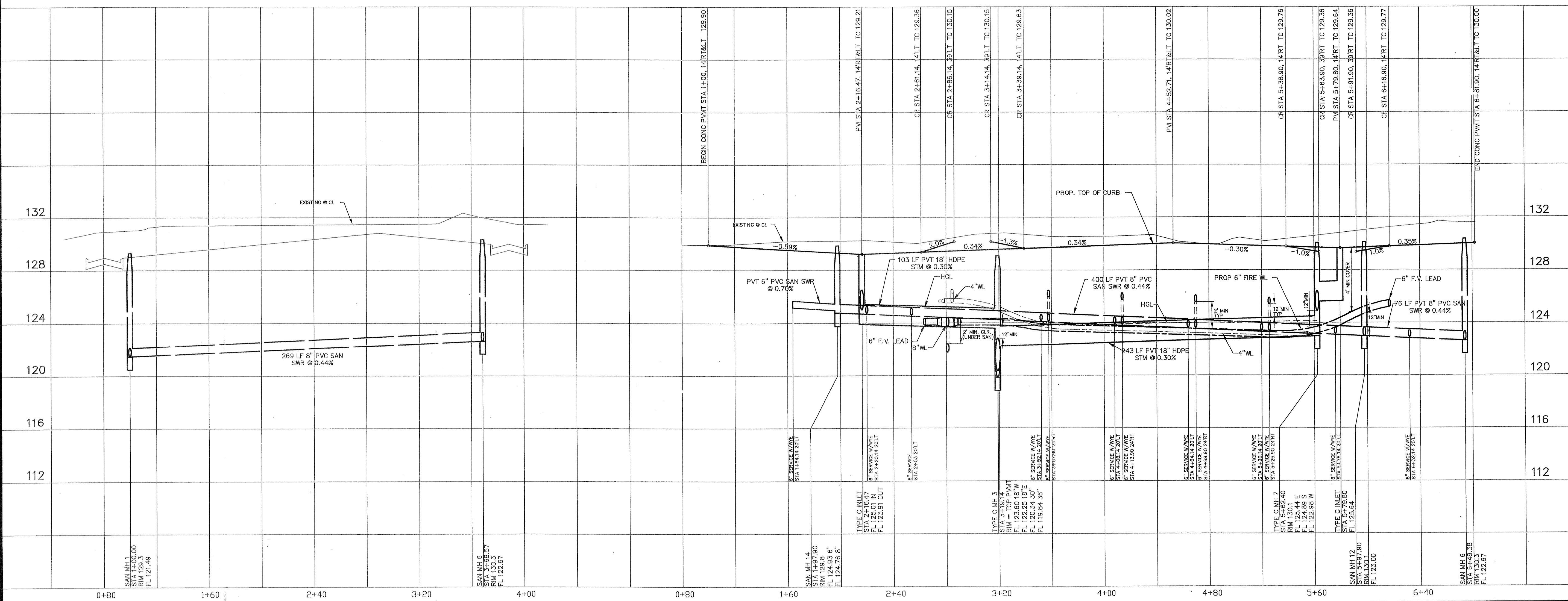
BENCH MARK
 BENCHMARK: NATIONAL GEODETIC SURVEY MARKER
 Y1216, 1973 ADJ., ELEV = 125.994
 Y1216, 1978 ADJ., ELEV = 125.406
 Y1216, 1988 ADJ., ELEV = 123.94
 ELEVATIONS ARE BASED ON 1973 ADJUSTMENT

FILL NOTE
 Fill to be placed in maximum 8" lifts to 95% Standard Proctor Density ± 2% optimum moisture. Existing swales and ponds to be cleaned and trucked free from vegetation prior to placement of fill material.

WATERLINE PROTECTION NOTE:
 When sanitary sewer and waterline cross, both shall be constructed in strict accordance with City of Houston 'Infrastructure Design Manual' Table 7.4: Protection Requirements at Water Line - Sanitary Sewer Crossings. SEE GENERAL NOTES SHEET

LATERAL 'A'

VILLA LAGO LANE
 PRIVATE STREET



PROVIDENT CONSULTING, INC.
 1405 ALLSTON ST.
 HOUSTON, TEXAS 77008
 (713)802-1019

PRIVATE UTILITY LINES SHOWN

CENTERPOINT ENERGY, ENTEX
 SBC VALID FOR ONE YEAR
 APPROVED ONLY FOR UNDERGROUND COORD FACILITIES
 CENTERPOINT ENERGY
 APPROVED ONLY FOR CROSSING UNDERGROUND DUCTILES
 UNLESS NOTED VALID AT TIME OF REVIEW ONLY.

VILLAS AT WILLOWBROOK
 in
 HARRIS COUNTY MUD 191
 HARRIS COUNTY, TEXAS
 PLAN & PROFILE
VILLA LAGO LANE
 LATERAL 'A'

WATER	WASTEWATER	TRAFFIC
ST. & BRIDGE	STORMWATER	SWQ

FILE NO:
 DRAWING SCALE:
 1" = 40'
 VERT: 4' HORIZ: 40'
 SHEET No: 12 OF 24

