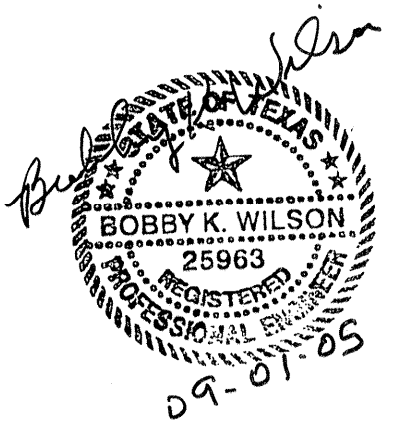


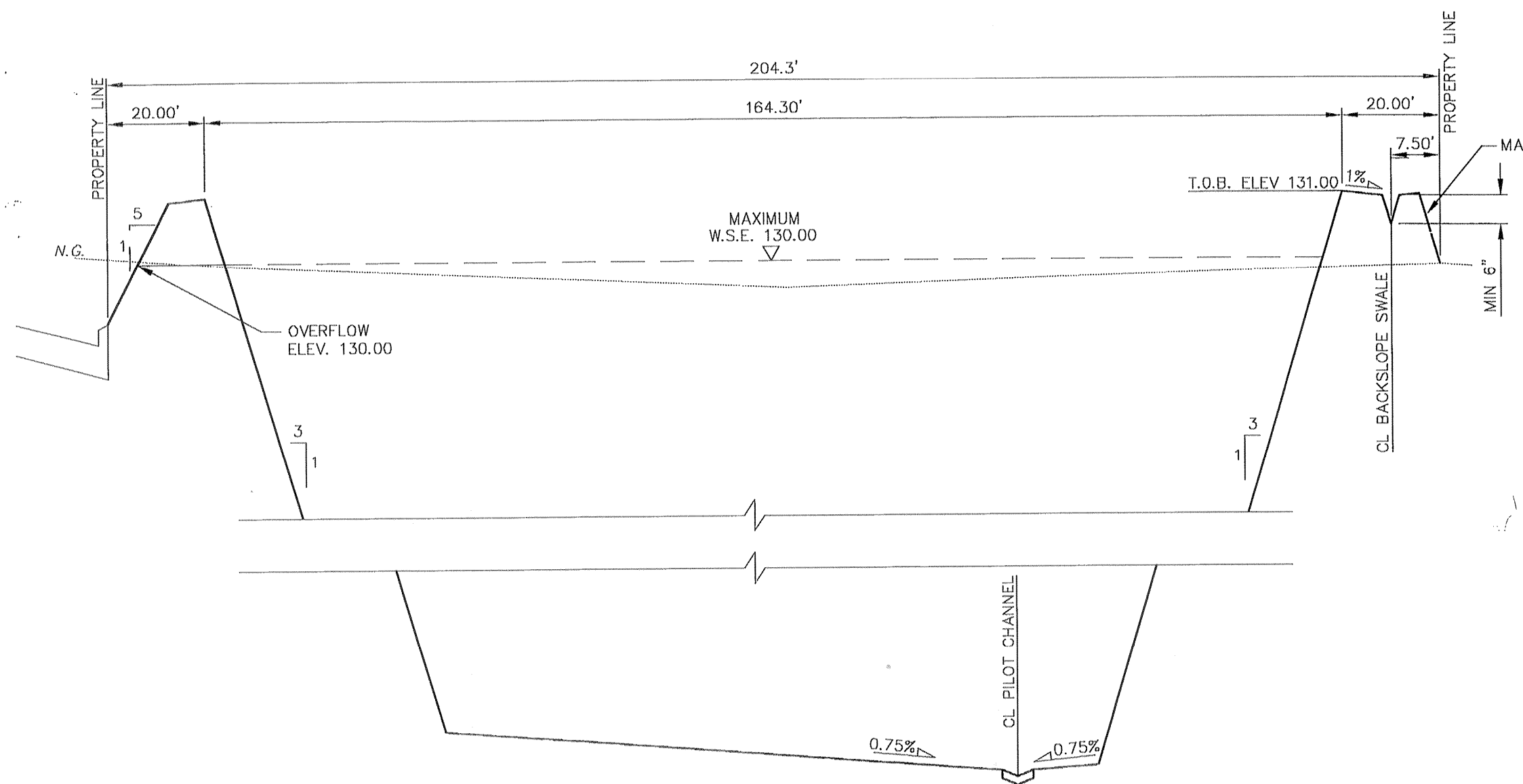
**BENCH MARK**  
 BENCHMARK: NATIONAL GEODETIC SURVEY MARKER  
 Y1216, 1973 ADJ., ELEV = 125.994  
 Y1216, 1978 ADJ., ELEV = 125.406  
 Y1216, 1988 ADJ., ELEV = 123.94  
 ELEVATIONS ARE BASED ON 1973 ADJUSTMENT

**FLOOD PLAIN STATEMENT:**  
 No portion of this tract lies within a "100 year flood hazard area" as designated on The National Flood Insurance Program - Flood Insurance Rate Map issued by the Federal Emergency Management Agency under Community Panel Number 480287 0435 J for Harris County, Texas dated November 6, 1996.

Privately owned utilities within private properties shall be reviewed and released by the County Engineer's Office.



PROVIDENT CONSULTING, INC.  
 1405 ALLSTON ST.  
 HOUSTON, TEXAS 77008  
 (713)802-1010  
**PCI**  
 PROVIDENT CONSULTING, INC.



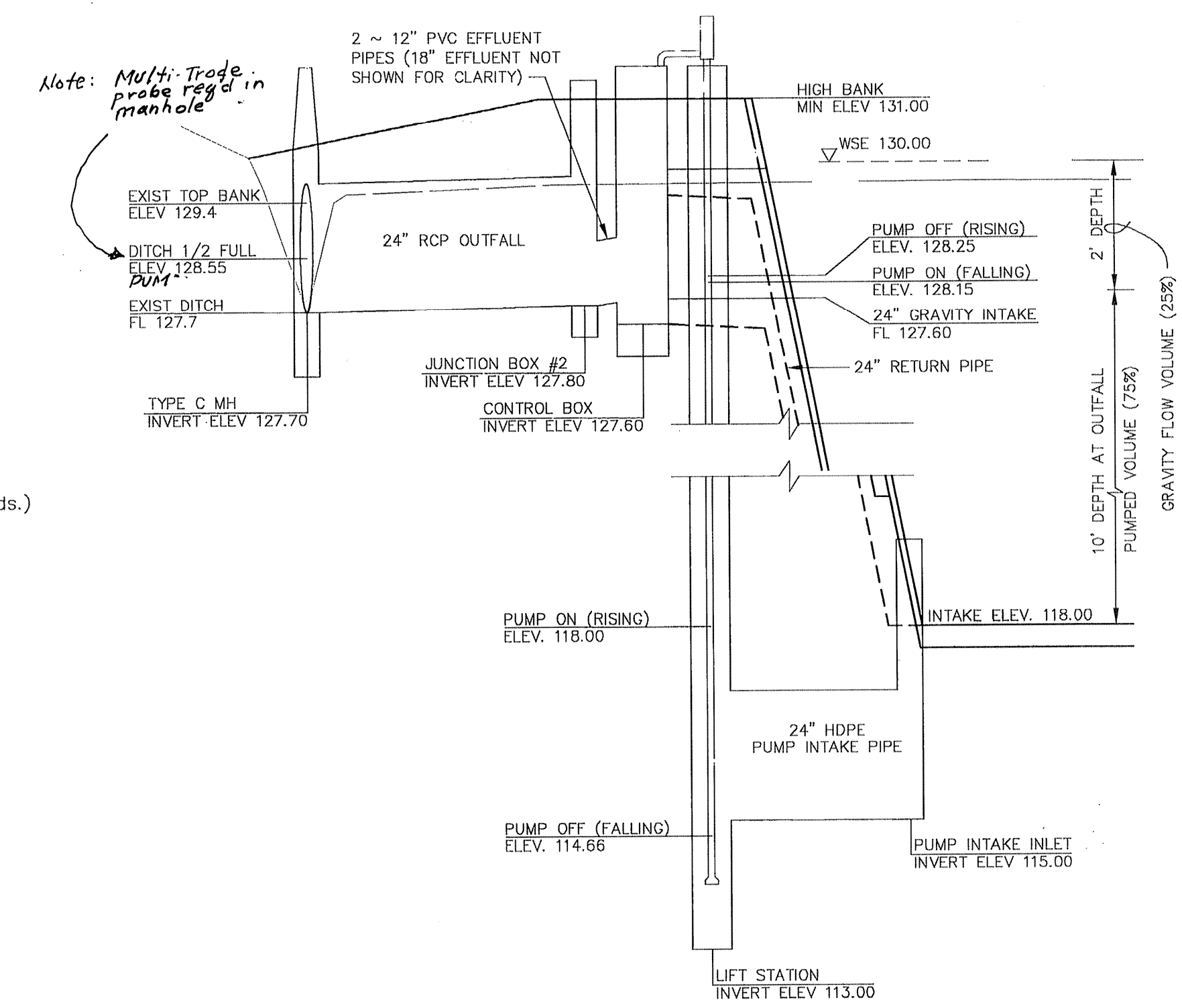
SECTION A-A  
 1" = 20' (HOR)  
 1" = 2' (VER)

**DETENTION POND NOTES**

1. Detention facility shown is a private facility and shall be operated and maintained by Owner/HOME OWNER'S ASSOCIATION.
2. Detention Pond Site to be Hydromulch Seeded.
3. THE CITY OF HOUSTON IS NOT RESPONSIBLE TO MAINTAIN THE DETENTION POND/PONDS AND ITS FACILITIES.

**DETENTION SUMMARY**

1. Area Served = 8.54 acres  
 10.08 ac. (plat area) - 1.46 ac. (dedicated for Schroeder & Stratford Rds.)
2. Detention Storage Rate =  $C_s = .75$  acre-feet/acre (Required)  
 Pumped detention, no hydraulic calculations done.
3. Detention Storage Volume Required = 6.40 acre-feet
4. Detention Storage Volume Provided = 6.40 acre-feet  
 Volume to be pumped = 4.80 ac-ft (75%)  
 Gravity flow volume = 1.60 ac-ft (25%)
5. Maximum Design Water Surface Elevation = 130.00 feet
6. Overflow Elevation = 130.00 ft.
7. Allowable Detention Peak Discharge Rate = 5.74 cfs  
 717 LF Road frontage X .008 cfs/ft
8. Actual Detention Peak Discharge Rate = 2.0 cfs  
 Roadside ditch has limited capacity.



DETENTION OUTFALL SCHEMATIC  
 1" = 20' (HOR)  
 1" = 2' (VER)

**PRIVATE UTILITY LINES SHOWN**

CENTERPOINT ENERGY, ENTEX	
SBC VALID FOR ONE YEAR APPROVED ONLY FOR UNDERGROUND CONDUIT FACILITIES	
CENTERPOINT ENERGY APPROVED ONLY FOR CROSSING UNDERGROUND DUCTLINES UNLESS NOTED VALID AT THE OF REVIEW ONLY.	
VILLAS AT WILLOWBROCK HARRIS COUNTY MUD 191 HARRIS COUNTY, TEXAS	
<b>DETENTION POND</b>	
WATER	TRAFFIC
ST. & BRIDGE	SWG
FILE NO:	FACILITIES
DRAWING SCALE: 1" = 20'	
VERT: HORZ:	
SHEET No: 13 OF 24	