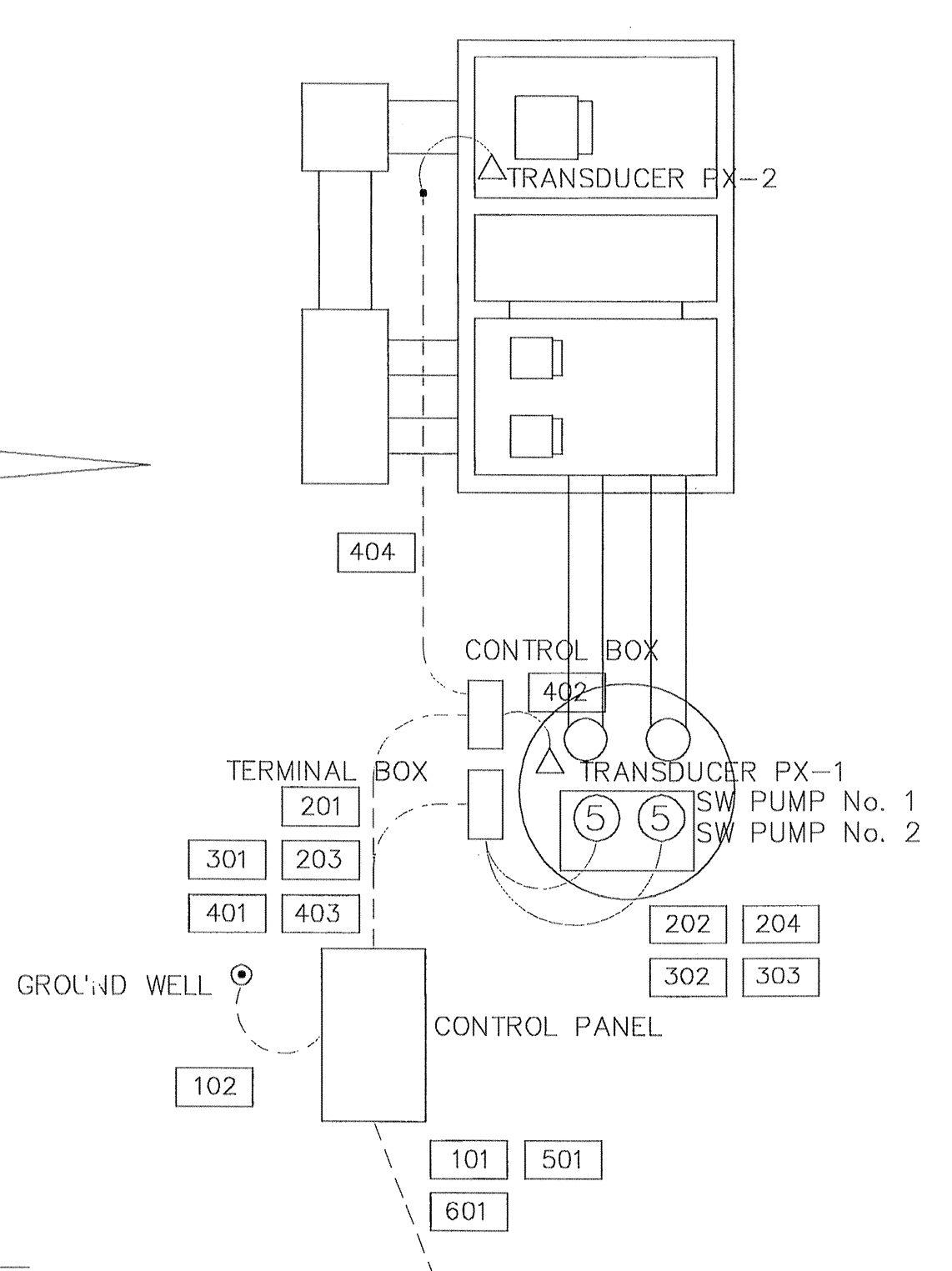
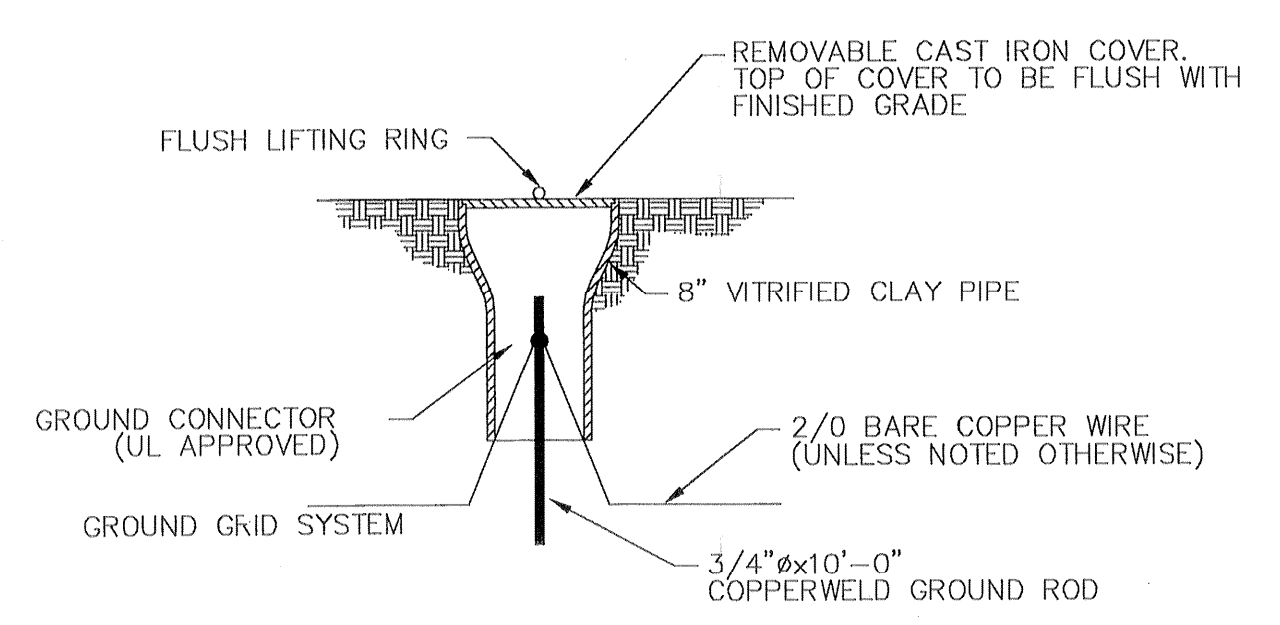


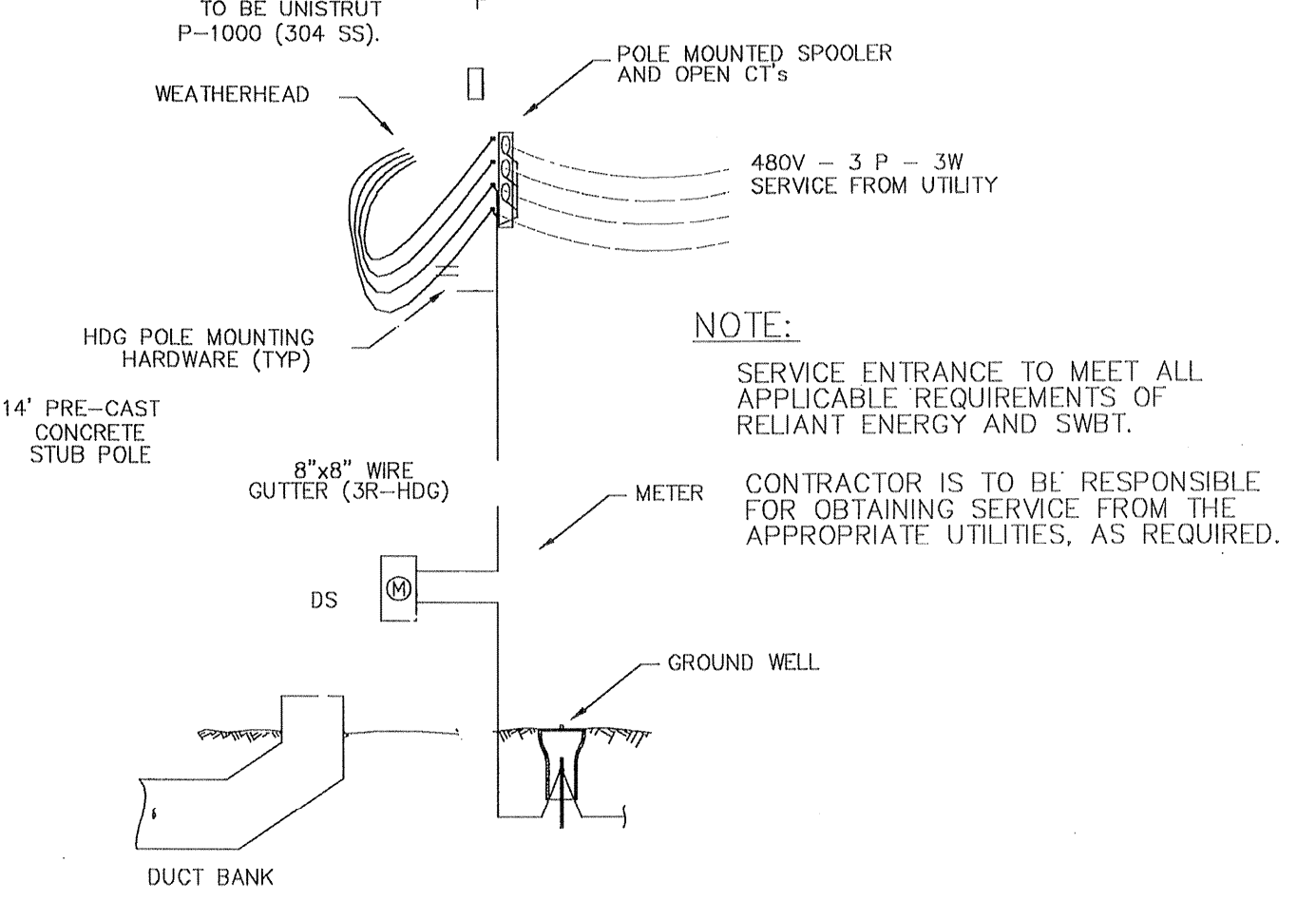
ELECTRICAL PLAN



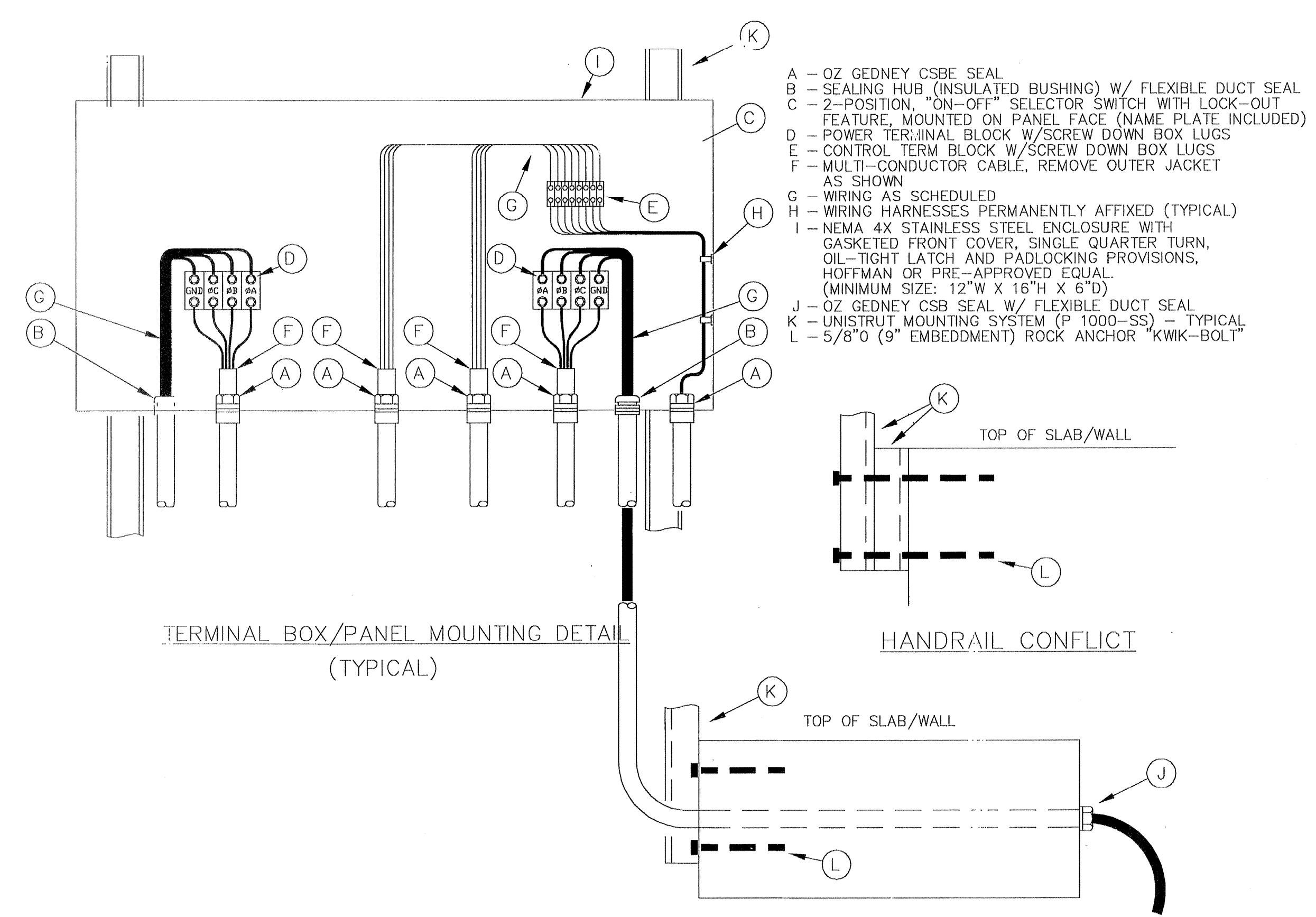
CONTROL CABINET ENCLOSURE & FOUNDATION



GROUND WELL DETAIL (TYPICAL)



SERVICE ENTRANCE/SWITCH RACK

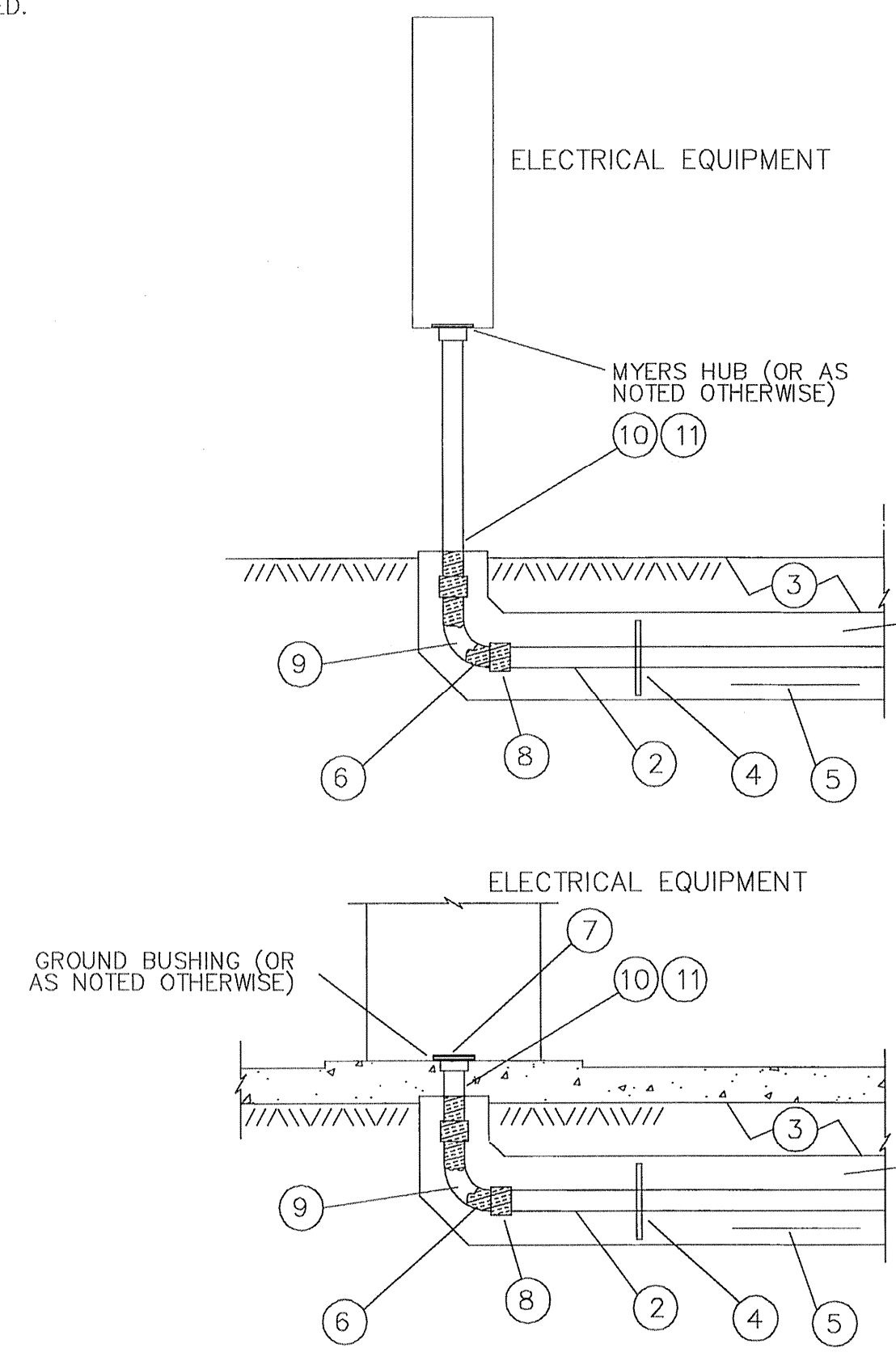


TERMINAL BOX/PANEL MOUNTING DETAIL (TYPICAL)

HANDRAIL CONFLICT

FIXTURE SCHEDULE			
MARK	LAMPS	TYPE	DESCRIPTION (MFG)
F	1	HPS	HUBBELL FLOODLIGHT (250W) w/ MOGUL BASE, TRUNNION YOKE, POLE MOUNTING BASE, & HARDWARE, POLYCARBONATE LENS (MHS025C5268LL)

FIXTURE IS TO BE OPERATED BY PHOTO CELL.



ELECTRICAL EQUIPMENT

ELECTRICAL EQUIPMENT

- UNDERGROUND CONDUIT SHALL BE ENCASED IN AN ENVELOPE OF CONCRETE COLORED RED.
- SEE DESIGN DRAWINGS FOR NUMBER AND SIZE OF CONDUITS. TYPE OF UNDERGROUND CONDUIT IS TO BE AS SPECIFIED ON THE DRAWINGS/SPECIFICATIONS.
- CONDUIT SPACING, CONCRETE COVER, AND DEPTH OF TRENCH ARE TO BE PER THE LATEST VERSION OF THE NATIONAL ELECTRICAL CODE. PROVIDE WARNING TAPE 12" ABOVE CONCRETE ENVELOPE.
- PROVIDE PLASTIC COMPOSITION CONDUIT SPACERS AT 10'-0" O.C. OR A MINIMUM OF ONE SUPPORT PER UNIT.
- PROVIDE ONE #3 BAR - CONTINUOUS PER VERTICAL ROW OF CONDUIT PLACED IN THE BOTTOM OF THE CONCRETE ENVELOPE. PROVIDE ADDITIONAL OR ALTERNATE REINFORCING AS NOTED ON THE DRAWINGS. PROVIDE #3 TIES AT 48" O.C. OR AS NOTED OTHERWISE.
- RIGID STEEL ELBOWS, COUPLINGS AND NIPPLES IN THE RISER SHALL BE PROTECTED WITH FACTORY APPLIED PVC COATING OR TAPED WITH TWO LAYERS, HALF-LAPPED SCOTCH NO. 88 TAPE.
- PROTECT EXPOSED CONDUIT ENDS DURING CONSTRUCTION WITH PIPE OR PLUG CAPS. FUTURE AND SPACE CONDUIT ENDS SHALL HAVE PIPE PLUGS OR CAPS.
- PROVIDE AN ADAPTER FROM PVC TO METALIC CONDUIT.
- ELBOWS SHALL BE LONG RADIUS, RIGID GALVANIZED STEEL (RGS) WITH A MINIMUM BEND RADIUS OF 10 TIMES THE CONDUIT DIAMETER.
- PROVIDE RGS CONDUIT RISERS OR AS NOTED OTHERWISE.
- ON ALL TERMINATED UNDERGROUND RISERS PROVIDE A 3 TO 5 FOOT NIPPLE TO ELIMINATE EXTRANEUS CONCRETE FROM THE DUCT. PRIOR TO THE CONCRETE TAKING A SET, REMOVE THE NIPPLE AND CAP OR PLUG THE RISER.

EQUIPMENT CONNECTION & EMBEDDED CONDUIT DETAIL (TYPICAL)

BENCH MARK
 BENCHMARK NATIONAL GEODETIC SURVEY MARKER
 Y1216, 1973 ADJ. ELEV = 125.994
 Y1216, 1978 ADJ. ELEV = 125.406
 Y1216, 1988 ADJ. ELEV = 123.94
 ELEVATIONS ARE BASED ON 1973 ADJUSTMENT

PROVIDENT CONSULTING, INC.
 1405 ALLSTON ST.
 HOUSTON, TEXAS 77008
 (713)802-1019

PROVIDENT CONSULTING, INC.

BOBBY K. WILSON
 25963
 REGISTERED PROFESSIONAL ELECTRICAL ENGINEER
 05-05-05

PRIVATE UTILITY LINES SHOWN

CENTERPOINT ENERGY, ENTEX

SBC VALID FOR ONE YEAR
 APPROVED ONLY FOR UNDERGROUND CONDUIT FACILITIES

CENTERPOINT ENERGY
 APPROVED ONLY FOR CROSSING UNDERGROUND DUCTILES
 UNLESS NOTED VALID AT TIME OF REVIEW ONLY.

VILLAS AT WILLOWBROOK
 HARRIS COUNTY MUD 191
 HARRIS COUNTY, TEXAS

ELECTRICAL PLAN AND DETAILS

WATER
 WASTEWATER
 TRAFFIC
 STORMWATER
 SWD

FILE NO:

DRAWING SCALE:
 AS SHOWN

VERT: HORZ:

SHEET No: 23 OF 24

40820
 CITY OF HOUSTON, TEXAS