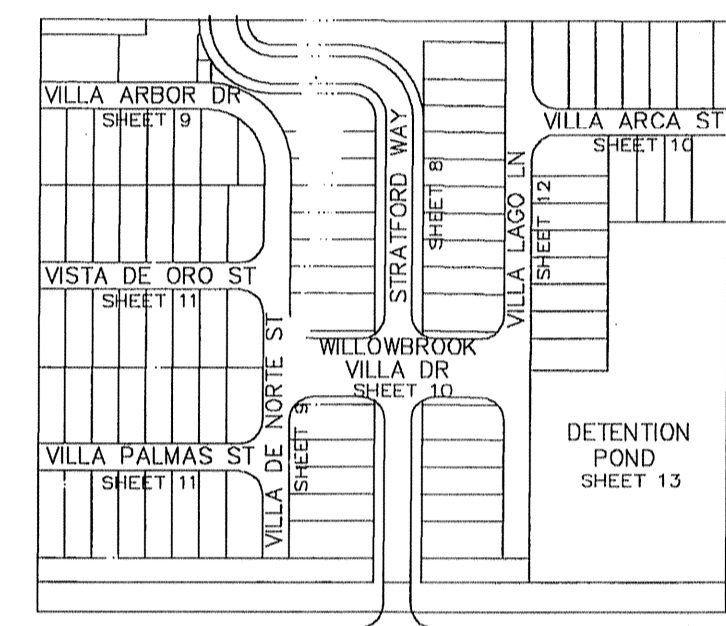


STEEPLECHASE APARTMENTS
FILM CODE NO. 418086

CHAMPIONS ARBOR
FILM CODE NO. 448016



SHEET INDEX

A c r e a g e

Privately owned utilities within private properties shall be reviewed and released by the County Engineer's Office.

BENCH MARK
BENCHMARK: NATIONAL GEODETIC SURVEY MARKER
Y1216, 1973 ADJ., ELEV = 125.994
Y1216, 1978 ADJ., ELEV = 125.406
Y1216, 1988 ADJ., ELEV = 123.94
ELEVATIONS ARE BASED ON 1973 ADJUSTMENT

FLOOD PLAIN STATEMENT:
No portion of this tract lies within a "100 year flood hazard area" as designated on The National Flood Insurance Program - Flood Insurance Rate Map issued by the Federal Emergency Management Agency under Community Panel Number 480287 0435 J for Harris County, Texas dated November 6, 1996.

- LEGEND**
- STORM SEWER W/ MANHOLE
 - TYPE B-B INLETS
 - TYPE C INLET
 - ↑ DIRECTION OF STREET DRAINAGE
 - ⊠ STOP SIGN (R1-1A)
 - ⊞ WHEELCHAIR RAMP

PRIVATE UTILITY LINES SHOWN

CENTERPOINT ENERGY, ENTEX
SBC VALID FOR ONE YEAR
APPROVED ONLY FOR UNDERGROUND CONCRETE FACILITIES
CENTERPOINT ENERGY
APPROVED ONLY FOR CROSSING UNDERGROUND DUCTILES
UNLESS NOTED VALID AT TIME OF REVIEW ONLY.

VILLAS AT WILLOWBROOK
in
HARRIS COUNTY MUD 191
HARRIS COUNTY, TEXAS
**OVERALL LAYOUT
PAVING & DRAINAGE**

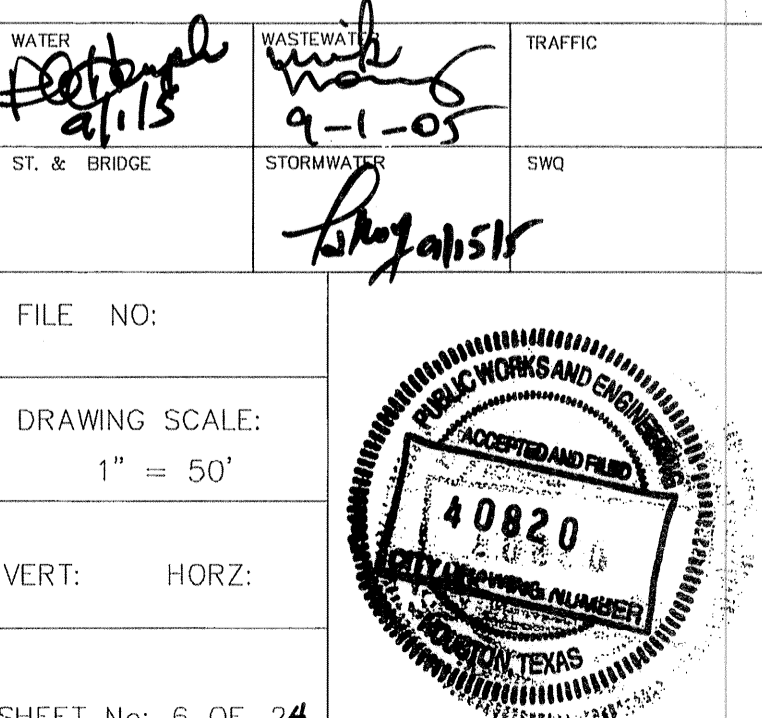
WATER	WASTEWATER	TRAFFIC
ST. & BRIDGE	STORMWATER	SWO
FILE NO:	DRAWING SCALE: 1" = 50'	
VERT:	HORZ:	
SHEET No: 6 OF 24		

RESTRICTED RESERVE "A"
COMPENSATING OPEN SPACE
AND DETENTION/DRAINAGE
63,962 S.F. - 1.4664 AC.

RESTRICTED RESERVE "B"
OPEN SPACE
1,448 S.F. - 0.0332 AC.

RESTRICTED RESERVE "C"
OPEN SPACE
7,412 S.F. - 0.1702 AC.

RESTRICTED RESERVE "D"
OPEN SPACE
3,065 S.F. - 0.0704 AC.



PROVIDENT CONSULTING, INC.
1405 ALLSTON ST.
HOUSTON, TEXAS 77008
(713)802-1019

PCI
PROVIDENT CONSULTING, INC.