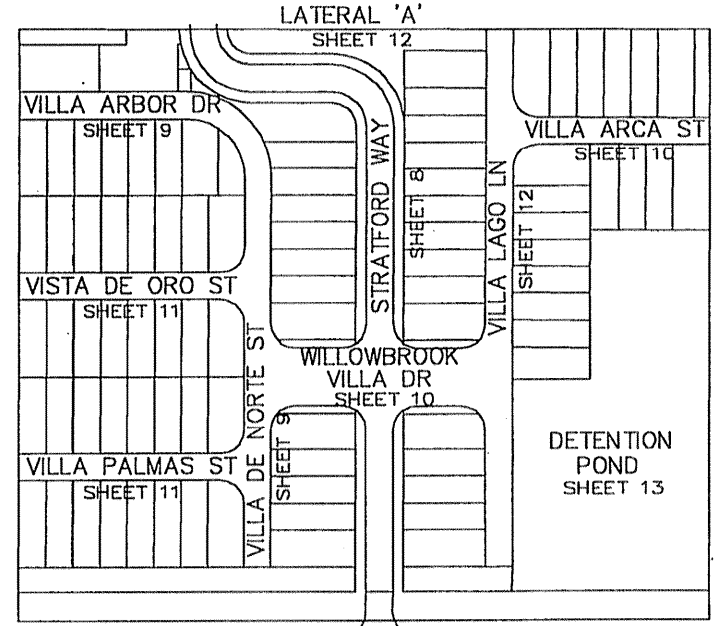


CHAMPIONS ARBOR
FILM CODE NO. 448016

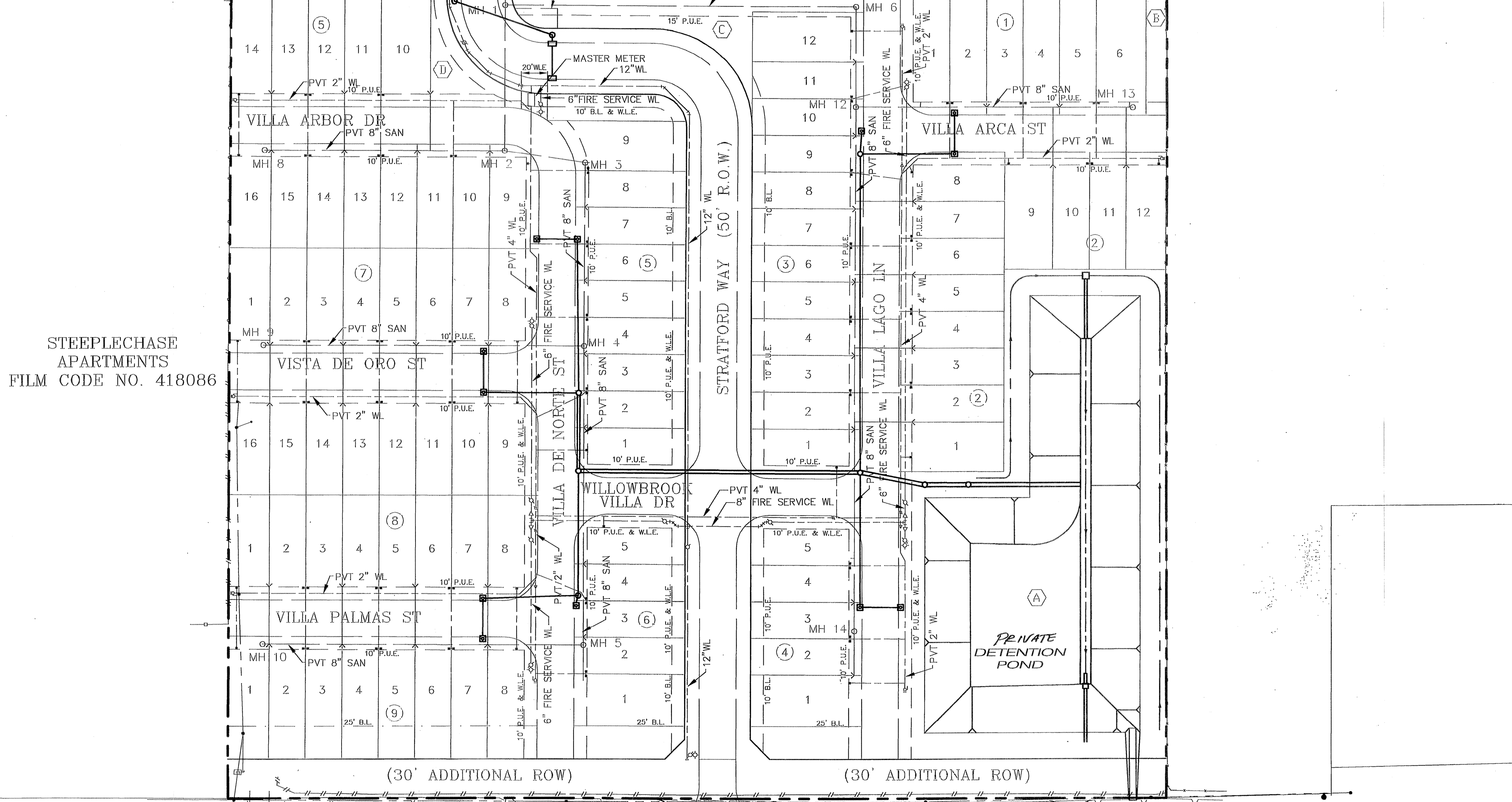
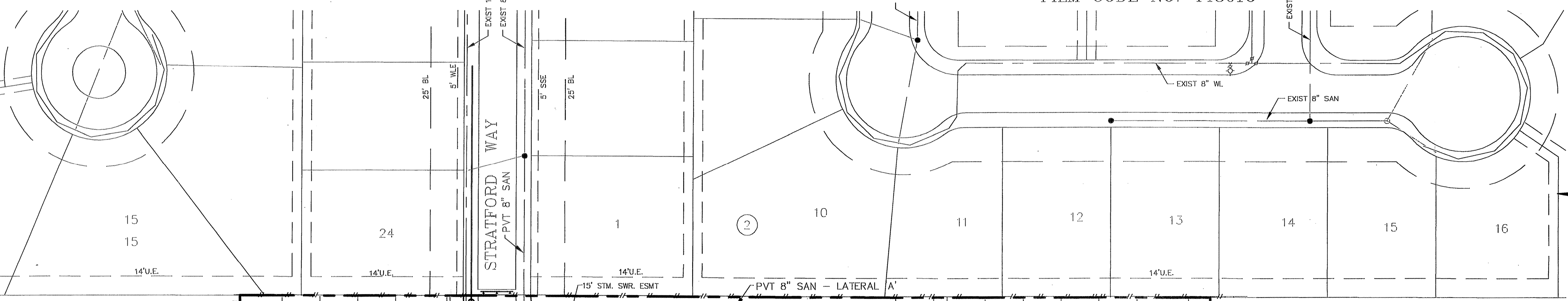
BENCH MARK
BENCHMARK: NATIONAL GEODETIC SURVEY MARKER
Y1216, 1973 ADJ., ELEV = 125.994
Y1216, 1978 ADJ., ELEV = 125.406
Y1216, 1988 ADJ., ELEV = 123.94
ELEVATIONS ARE BASED ON 1973 ADJUSTMENT

FLOOD PLAIN STATEMENT:
No portion of this tract lies within a "100 year flood hazard area" as designated on The National Flood Insurance Program - Flood Insurance Rate Map issued by the Federal Emergency Management Agency under Community Panel Number 480257 0435 J for Harris County, Texas dated November 6, 1996.

- LEGEND**
- 3" — PROP. SANITARY SWR. W/ MANHOLE
 - 4" — PROP. SANITARY SWR. STACK
 - 6" — PROP. SAN SWR 6" SERVICE W/WYE
 - 8" — PROP. WATER LINE
 - 12" — PROP. FIRE HYDRANT
 - 15" — PROP. GATE VALVE W/ BOX
 - 20" — PROP. WATER LINE REDUCER
 - 24" — PROP. BLOWOFF VALVE
 - 30" — PROP. WL SERVICE METER
 - P.U.E. — PRIVATE UTILITY EASEMENT
 - W.L.E. — WATER LINE EASEMENT



SHEET INDEX



STEEPLECHASE APARTMENTS
FILM CODE NO. 418086

PRIVATE UTILITY LINES SHOWN

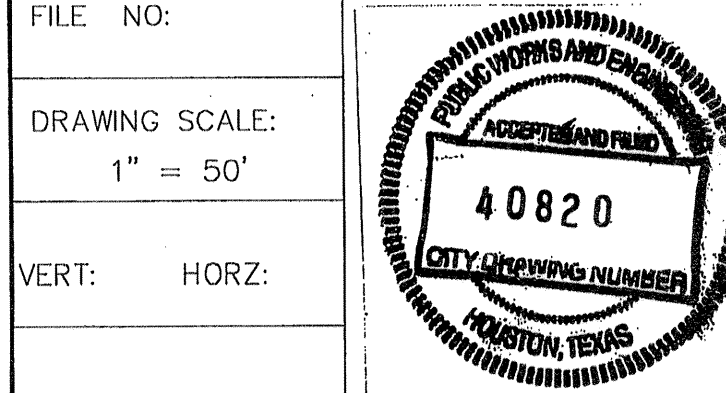
CENTERPOINT ENERGY, ENTEX
SBC VALID FOR ONE YEAR
APPROVED ONLY FOR UNDERGROUND CONDUIT FACILITIES
CENTERPOINT ENERGY
APPROVED ONLY FOR CROSSING UNDERGROUND DUCTILES
UNLESS NOTED VALID AT TIME OF REVIEW ONLY.

VILLAS AT WILLOWBROOK
HARRIS COUNTY MUD 191
HARRIS COUNTY, TEXAS
**OVERALL LAYOUT
SANITARY SEWER &
WATER DISTRIBUTION**

WATER	WASTEWATER	TRAFFIC
ST. & BRIDGE	STORMWATER	SWQ

FILE NO:
DRAWING SCALE:
1" = 50'
VERT: HORZ:
SHEET No: 7 OF 24

- RESTRICTED RESERVE "A"
COMPENSATING OPEN SPACE
AND DETENTION/DRAINAGE
63,962 S.F. - 1.47 AC.
- RESTRICTED RESERVE "B"
OPEN SPACE
1,446 S.F. - 0.03 AC.
- RESTRICTED RESERVE "C"
OPEN SPACE
6,684 S.F. - 0.15 AC.
- RESTRICTED RESERVE "D"
OPEN SPACE
5,235 S.F. - 0.12 AC.
- RESTRICTED RESERVE "E"
OPEN SPACE
2,013 S.F. - 0.05 AC.
- RESTRICTED RESERVE "F"
OPEN SPACE
2,013 S.F. - 0.05 AC.



PROVIDENT CONSULTING, INC.
1405 ALLSTON ST.
HOUSTON, TEXAS 77008
(713) 802-1019
PCI
PROVIDENT CONSULTING, INC.