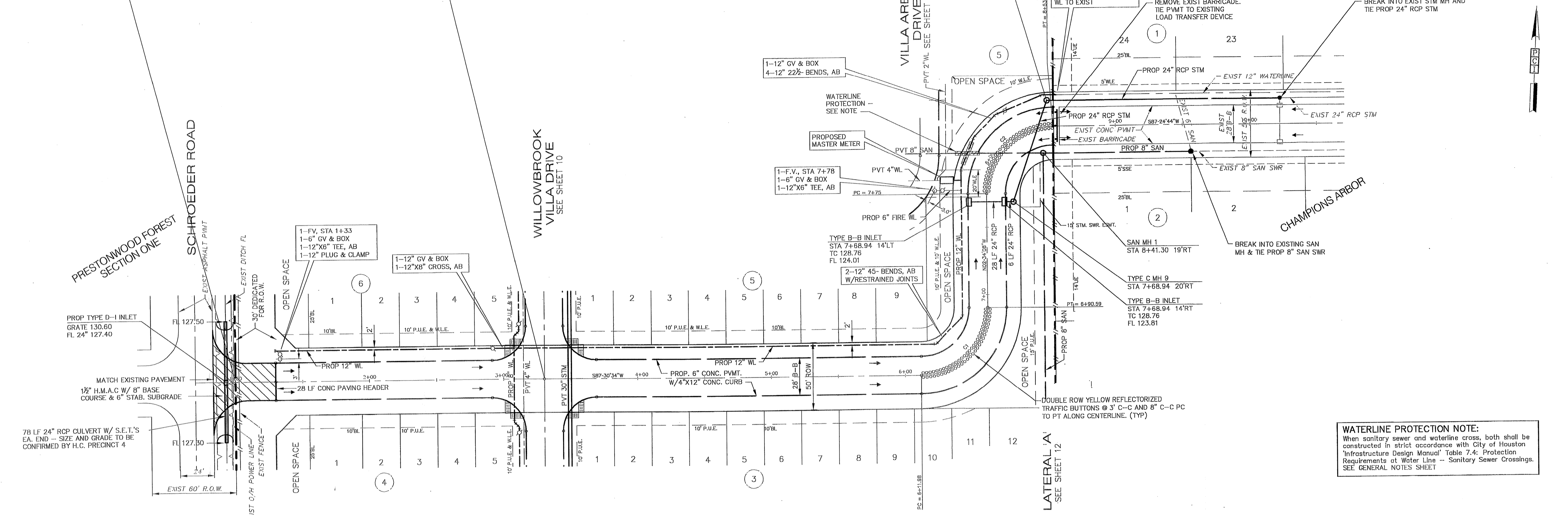


STA 1+00.00 STRATFORD WAY
ORIGINAL R.O.W. LINE

STA 3+30.45 STRATFORD WAY
STA 3+24.00 WILLOWBROOK VILLA



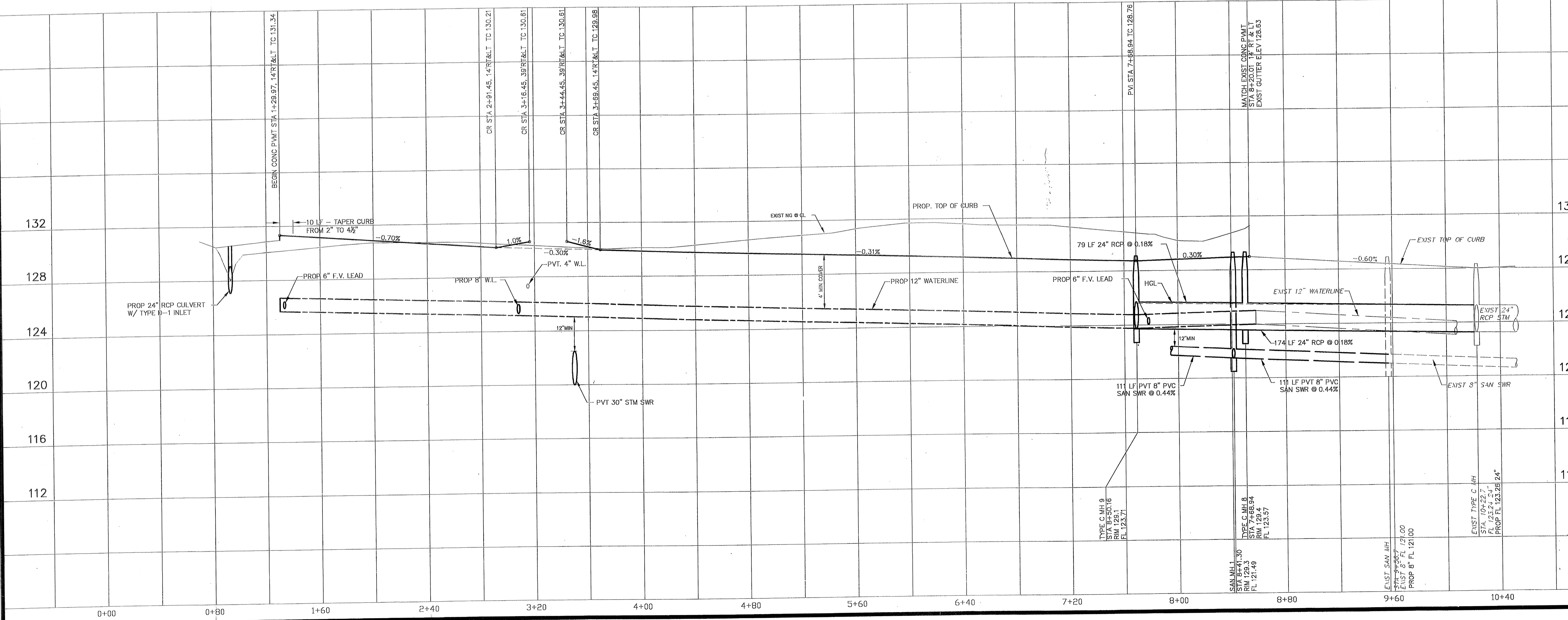
WATERLINE PROTECTION NOTE:
When sanitary sewer and waterline cross, both shall be constructed in strict accordance with City of Houston Infrastructure Design Manual Table 7.4: Protection Requirements at Water Line - Sanitary Sewer Crossings. SEE GENERAL NOTES SHEET

CURVE	LENGTH	RADIUS	TANGENT CHORD	CHD BEARING	DELTA
C1	78.61'	50.00'	50.07'	N42-28'13"E	90-04'43"
C2	78.54'	50.00'	50.07'	S42-25'51"W	90-00'00"

BENCH MARK
BENCHMARK: NATIONAL GEODETIC SURVEY MARKER
Y1216, 1973 ADJ., ELEV = 125.994
Y1216, 1978 ADJ., ELEV = 125.406
Y1216, 1988 ADJ., ELEV = 123.94
ELEVATIONS ARE BASED ON 1973 ADJUSTMENT

CROSSING NOTE
When sanitary sewer and waterline cross, both shall be constructed in strict accordance with City of Houston Infrastructure Design Manual Table 7.4: Protection Requirements at Water Line - Sanitary Sewer Crossings. SEE SHEET 12.

FILL NOTE
Fill to be placed in maximum 8" lifts to 95% Standard Proctor Density ± 2% optimum moisture. Existing swales and ponds to shall be cleaned and mucked free from vegetation prior to placement of fill material.



PRIVATE UTILITY LINES SHOWN

CENTERPOINT ENERGY, ENTEX

SBC VALID FOR ONE YEAR
APPROVED ONLY FOR UNDERGROUND CONDUIT FACILITIES

CENTERPOINT ENERGY
APPROVED ONLY FOR CROSSING UNDERGROUND FACILITIES
UNLESS NOTED VALID AT TIME OF REVIEW ONLY.

VILLAS AT WILLOWBROOK
IN
HARRIS COUNTY MUD 191
HARRIS COUNTY, TEXAS

PLAN & PROFILE
STRATFORD WAY

WATER: *[Signature]* 9/11/15
TRAFFIC: *[Signature]* 9-1-05

ST. & BRIDGE: *[Signature]* 9/15/15

FILE NO:

DRAWING SCALE:
1" = 40'

VERT: 4' HORZ: 40'

SHEET No: 8 OF 24

40820
CITY DRAWING NUMBER
HOUSTON, TEXAS

PROVIDENT CONSULTING, INC.
1405 ALLSTON ST.
HOUSTON, TEXAS 77008
(713)802-1019

