

BENCH MARK

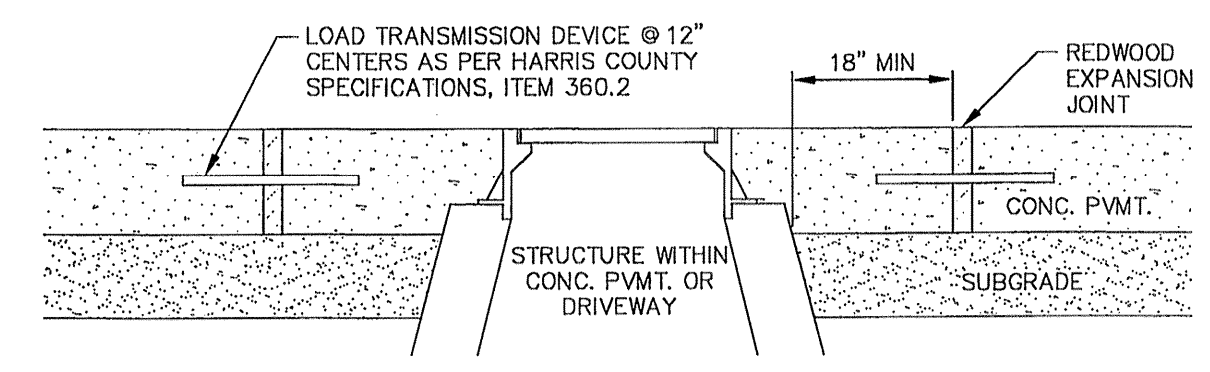
BENCHMARK: NATIONAL GEODETIC SURVEY MARKER
 Y1216, 1973 ADJ., ELEV = 125.994
 Y1216, 1978 ADJ., ELEV = 125.406
 Y1216, 1988 ADJ., ELEV = 123.94
 ELEVATIONS ARE BASED ON 1973 ADJUSTMENT

FILL NOTE

Fill to be placed in maximum 8" lifts to 95% Standard Proctor Density ± 2% optimum moisture. Existing swales and ponds to shall be cleaned and mucked free from vegetation prior to placement of fill material.

WATERLINE PROTECTION NOTE:

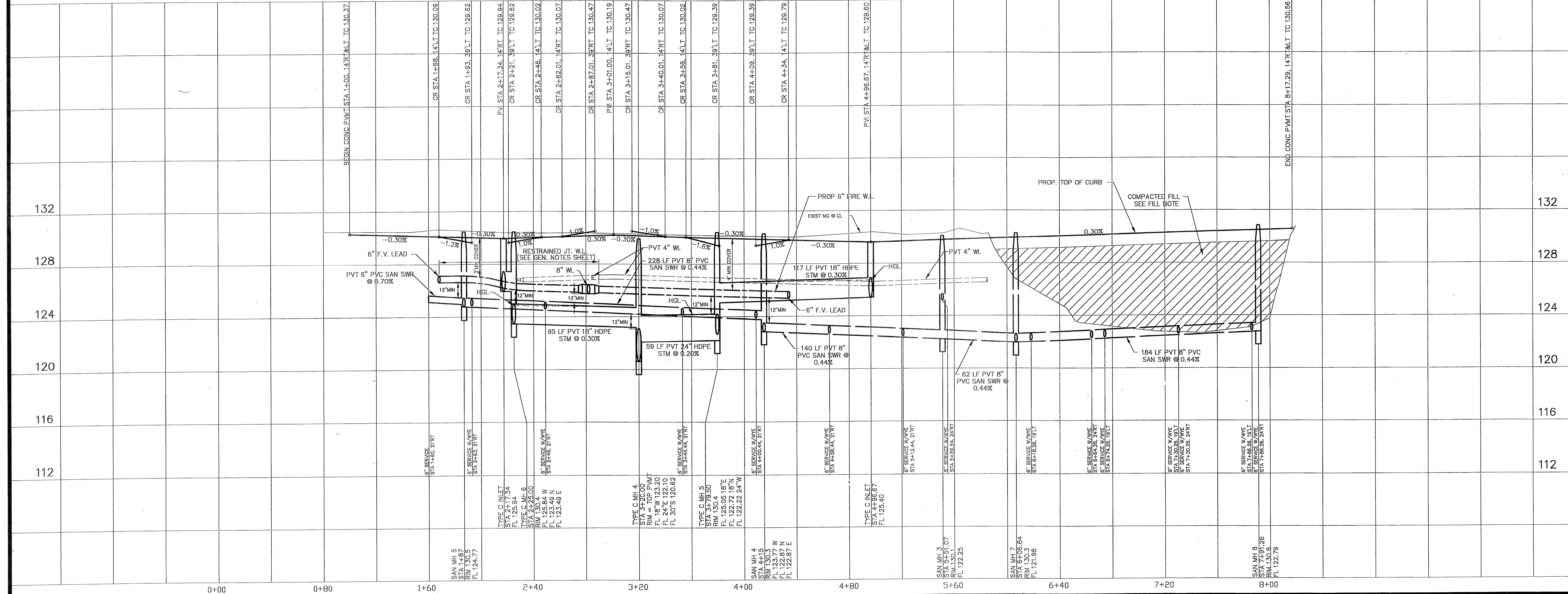
When sanitary sewer and waterline cross, both shall be constructed in strict accordance with City of Houston "Infrastructure Design Manual" Table 7.4, Protection Requirements at Water Line - Sanitary Sewer Crossings. SEE GENERAL NOTES SHEET



PROVIDENT CONSULTING, INC.
 1405 ALLSTON ST.
 HOUSTON, TEXAS 77008
 (713)802-1019

PCI
 PROVIDENT CONSULTING, INC.

STATE OF TEXAS
 BOBBY K. WILSON
 25963
 REGISTERED PROFESSIONAL ENGINEER
 09-27-03



PRIVATE UTILITY LINES SHOWN

CENTERPOINT ENERGY, ENTEX

SBC VALID FOR ONE YEAR
 APPROVED ONLY FOR UNDERGROUND CONDUIT FACILITIES

CENTERPOINT ENERGY
 APPROVED ONLY FOR CROSSING UNDERGROUND DUCTILES
 UNLESS NOTED VALID AT TIME OF REVIEW ONLY.

VILLAS AT WILLOWBROOK
 in
 HARRIS COUNTY MUD 191
 HARRIS COUNTY, TEXAS

PLAN & PROFILE
VILLA DE NORTE STREET
 PLAN & PROFILE
VILLA ARBOR DRIVE

WATER	WASTEWATER	TRAFFIC
ST. & BRIDGE	STORMWATER	SWQ

FILE NO:

DRAWING SCALE:
 1" = 40'

VERT: 4' HORZ: 40'

SHEET No: 9 OF 24

40820
 CITY DRAWING NUMBER
 HOUSTON, TEXAS