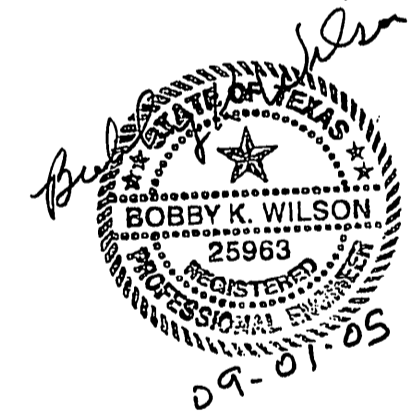


BENCH MARK

BENCHMARK: NATIONAL GEODETIC SURVEY MARKER  
 Y1216, 1973 ADJ., ELEV = 125.994  
 Y1216, 1978 ADJ., ELEV = 125.406  
 Y1216, 1988 ADJ., ELEV = 123.94  
 ELEVATIONS ARE BASED ON 1973 ADJUSTMENT

FLOOD PLAIN STATEMENT:  
 No portion of this tract lies within a "100 year flood hazard area" as designated on The National Flood Insurance Program - Flood Insurance Rate Map issued by the Federal Emergency Management Agency under Community Panel Number 480287 0435 J for Harris County, Texas dated November 6, 1996.

Privately owned utilities within private properties shall be reviewed and released by the County Engineer's Office.



PROVIDENT CONSULTING, INC.  
 1405 ALLSTON ST.  
 HOUSTON, TEXAS 77008  
 (713)802-1019



PRIVATE UTILITY LINES SHOWN

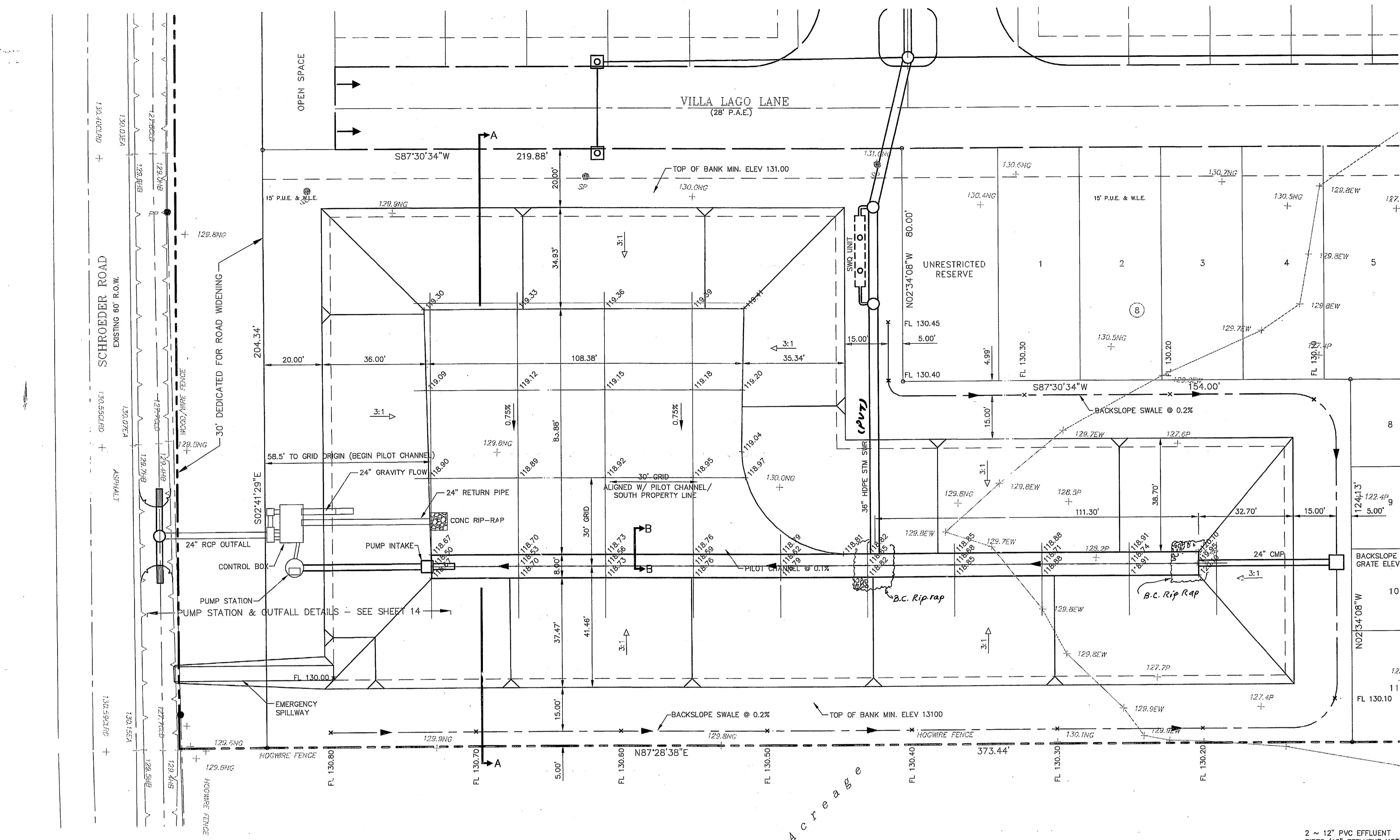
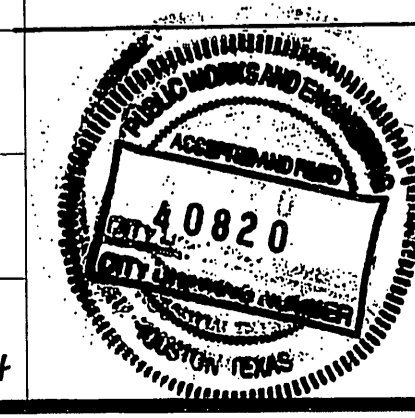
CENTERPOINT ENERGY, ENTX  
 SBC VALID FOR ONE YEAR  
 APPROVED ONLY FOR UNDERGROUND CONDUIT FACILITIES  
 CENTERPOINT ENERGY  
 APPROVED ONLY FOR CROSSING UNDERGROUND DUCTILES  
 UNLESS NOTED VALID AT TIME OF REVIEW ONLY.

VILLAS AT WILLOWBROOK  
 HARRIS COUNTY MUD 191  
 HARRIS COUNTY, TEXAS

DETENTION POND

WATER	STORMWATER	TRAFFIC
ST. & BRIDGE	SW	
FACILITIES		

FILE NO:  
 DRAWING SCALE:  
 1" = 20'  
 VERT:    HORZ:  
 SHEET No: 13 OF 24

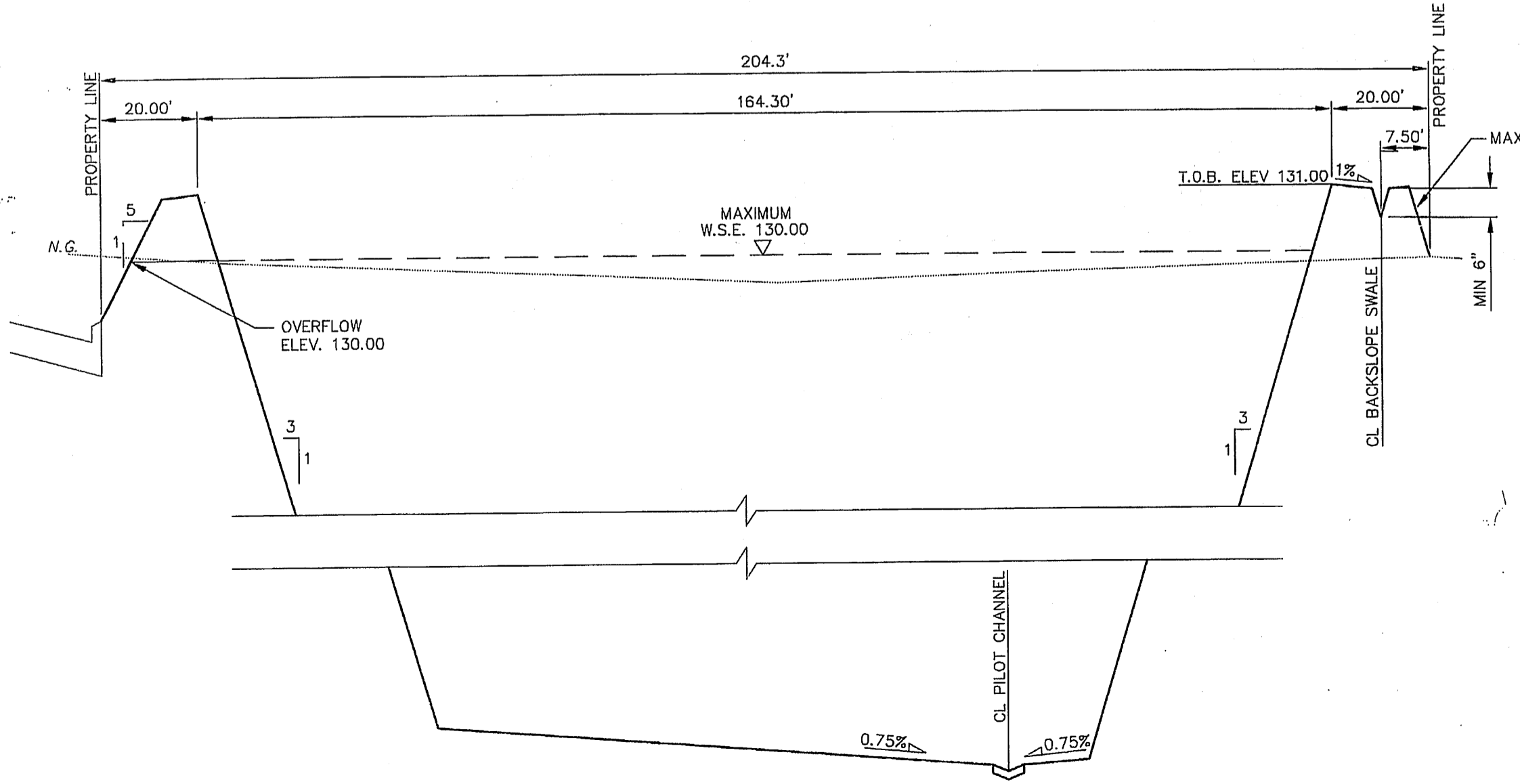


DETENTION POND NOTES

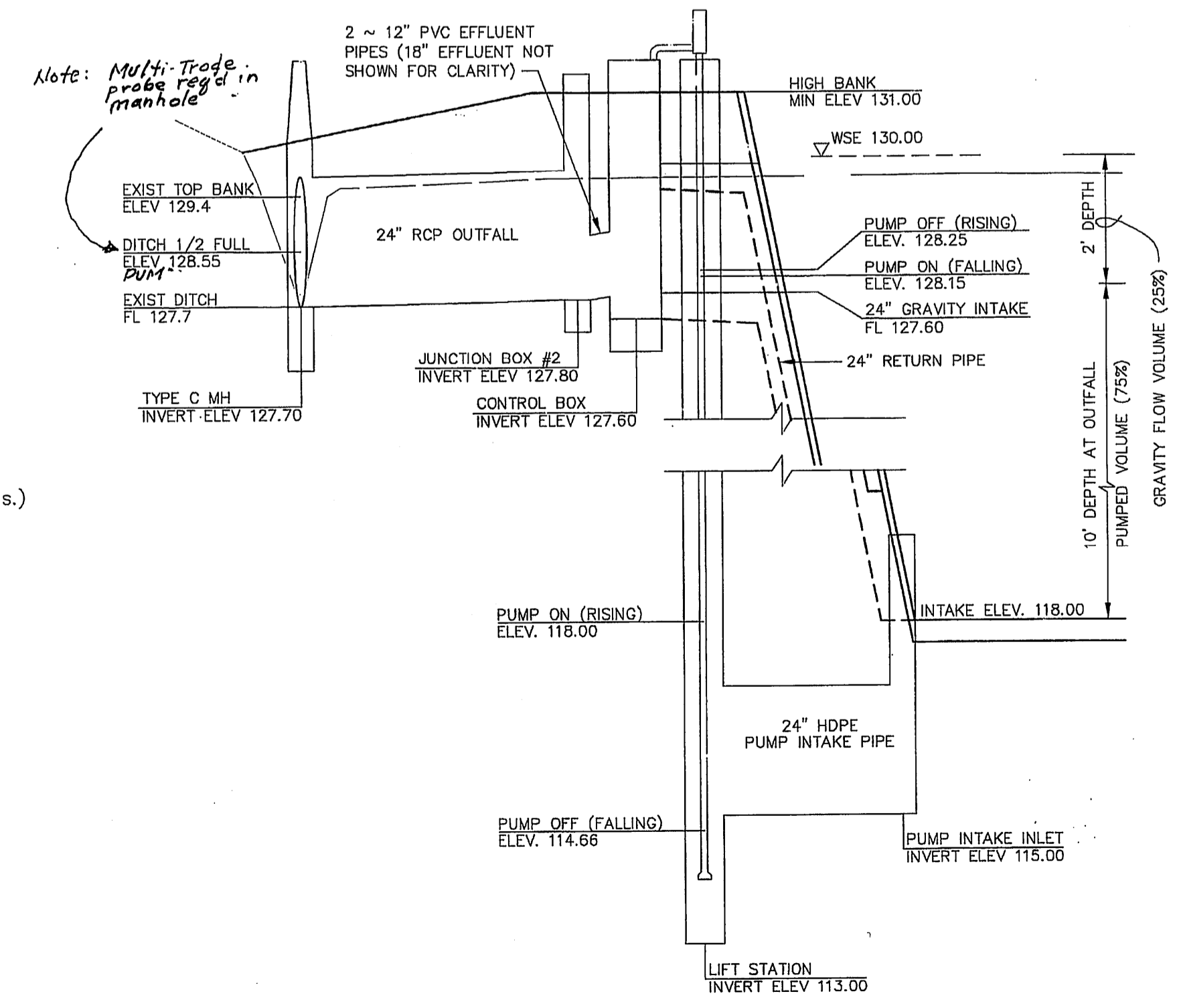
- Detention facility shown is a private facility and shall be operated and maintained by Owner/**HOME OWNERS ASSOCIATION**.
- Detention Pond Site to be Hydromulch Seeded.
- THE CITY OF HOUSTON IS NOT RESPONSIBLE TO MAINTAIN THE DETENTION POND/PONDS AND ITS FACILITIES.**

DETENTION SUMMARY

- Area Served = 8.54 acres  
 10.08 ac. (plat area) - 1.46 ac. (dedicated for Schroeder & Stratford Rds.)
- Detention Storage Rate = Cs = 0.75 acre-feet/acre (Required)  
 Pumped detention, no hydraulic calculations done.
- Detention Storage Volume Required = 6.40 acre-feet
- Detention Storage Volume Provided = 6.40 acre-feet  
 Volume to be pumped = 4.80 ac-ft (75%)  
 Gravity flow volume = 1.60 ac-ft (25%)
- Maximum Design Water Surface Elevation = 130.00 feet
- Overflow Elevation = 130.00 ft.
- Allowable Detention Peak Discharge Rate = 5.74 cfs  
 717 LF Road frontage X .008 cfs/ft
- Actual Detention Peak Discharge Rate = 2.0 cfs  
 Roadside ditch has limited capacity.



SECTION A-A  
 1" = 20' (HOR)  
 1" = 2' (VER)



DETENTION OUTFALL SCHEMATIC  
 1" = 20' (HOR)  
 1" = 2' (VER)