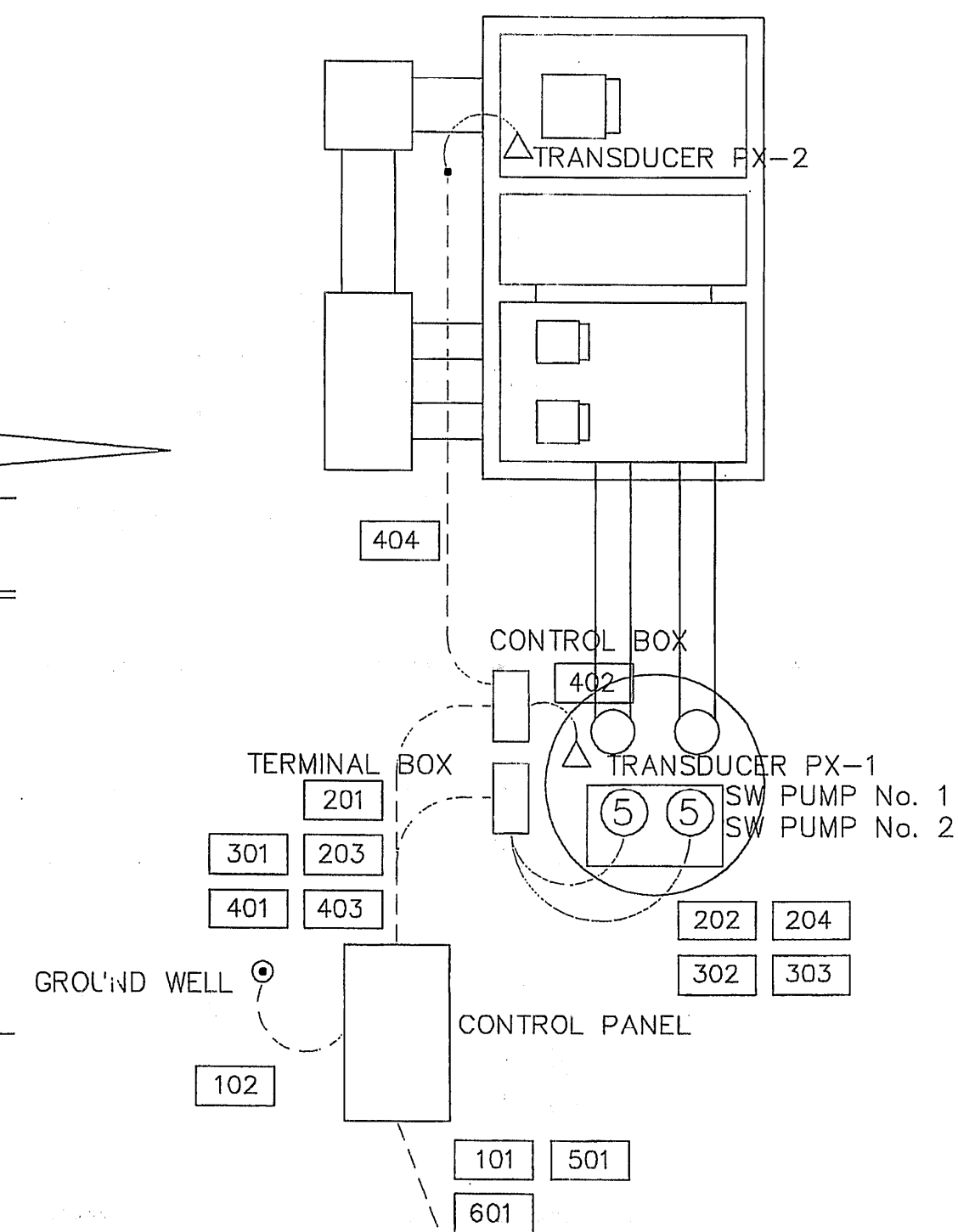
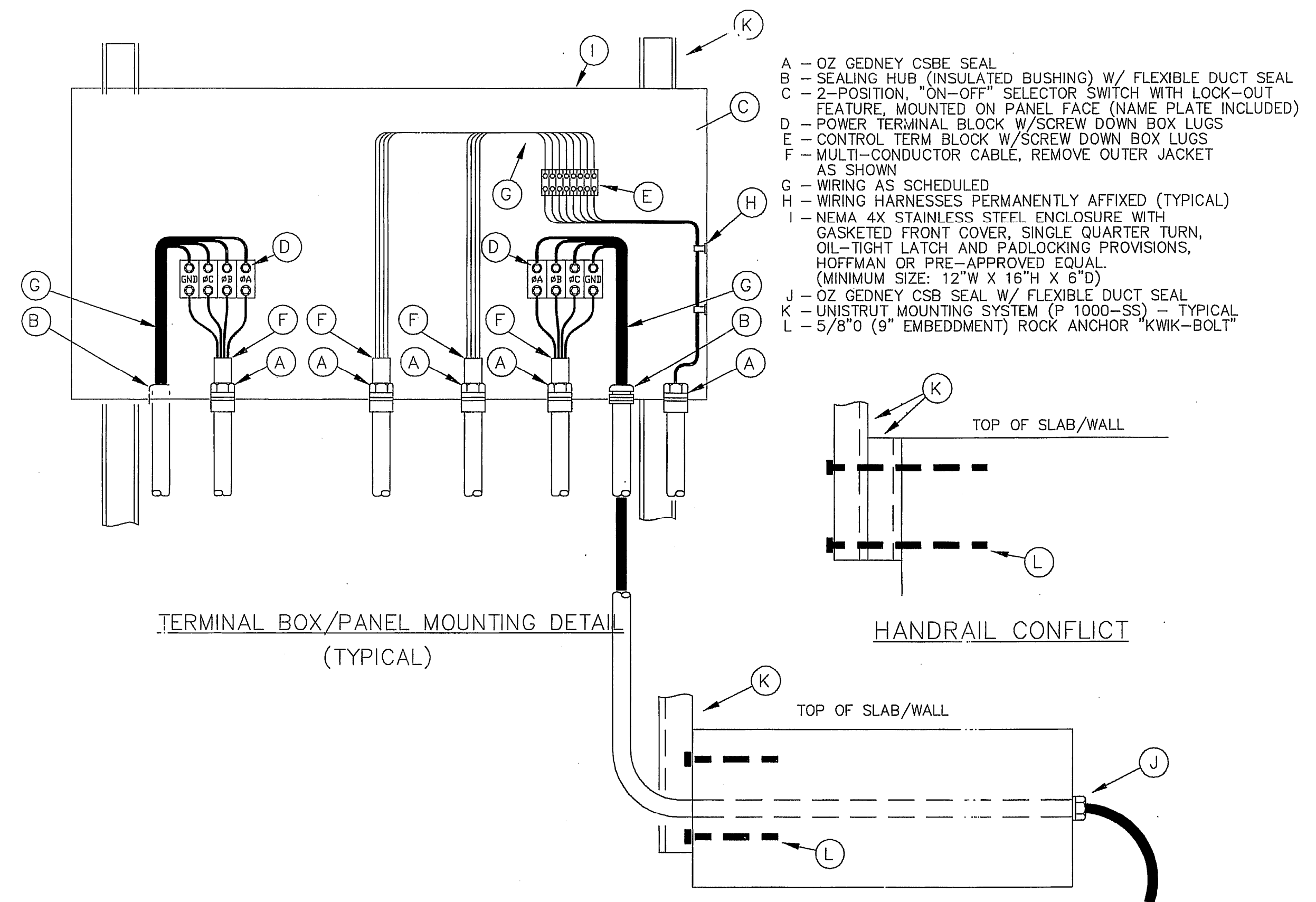


ELECTRICAL PLAN



SERVICE ENTRANCE/SWITCH RACK



TERMINAL BOX/PANEL MOUNTING DETAIL (TYPICAL)

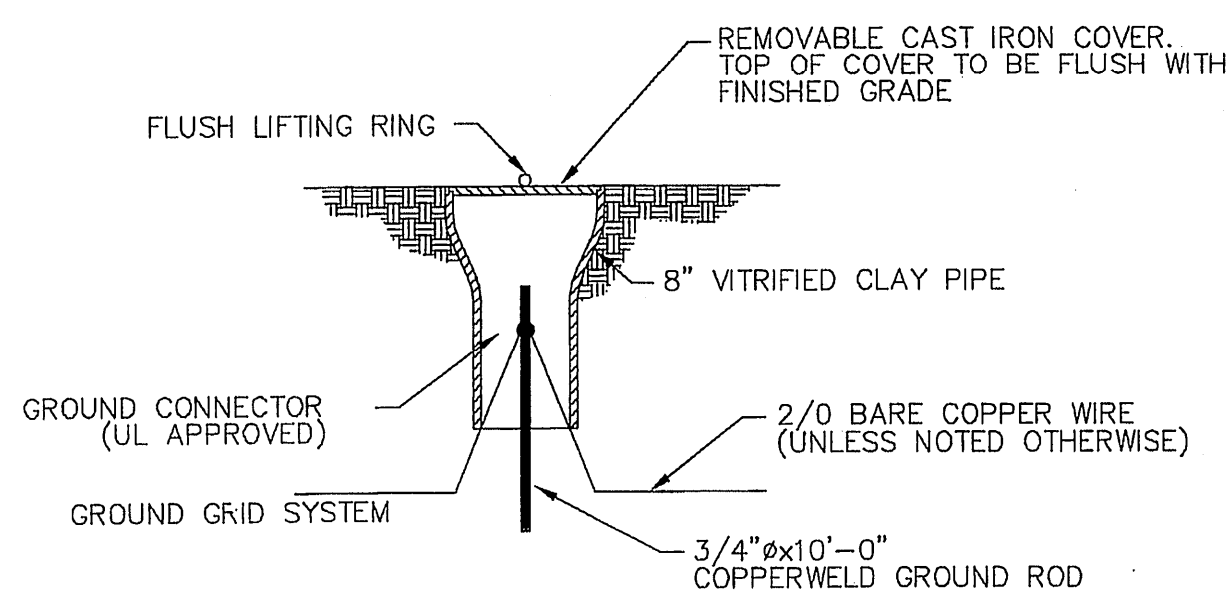
HANDRAIL CONFLICT

- A - OZ GEDNEY CSBE SEAL
- B - SEALING HUB (INSULATED BUSHING) W/ FLEXIBLE DUCT SEAL
- C - 2-POSITION, "ON-OFF" SELECTOR SWITCH WITH LOCK-OUT FEATURE, MOUNTED ON PANEL FACE (NAME PLATE INCLUDED)
- D - POWER TERMINAL BLOCK W/ SCREW DOWN BOX LUGS
- E - CONTROL TERM BLOCK W/ SCREW DOWN BOX LUGS
- F - MULTI-CONDUCTOR CABLE, REMOVE OUTER JACKET AS SHOWN
- G - WIRING AS SCHEDULED
- H - WIRING HARNESSES PERMANENTLY AFFIXED (TYPICAL)
- I - NEMA 4X STAINLESS STEEL ENCLOSURE WITH GASKETED FRONT COVER, SINGLE QUARTER TURN, OIL-TIGHT LATCH AND PADLOCKING PROVISIONS, HOFFMAN OR PRE-APPROVED EQUAL (MINIMUM SIZE: 12" W X 16" H X 6" D)
- J - OZ GEDNEY CSBE SEAL W/ FLEXIBLE DUCT SEAL
- K - UNISTRUT MOUNTING SYSTEM (P 1000-SS) - TYPICAL
- L - 5/8" (9" EMBEDMENT) ROCK ANCHOR "KWIK-BOLT"

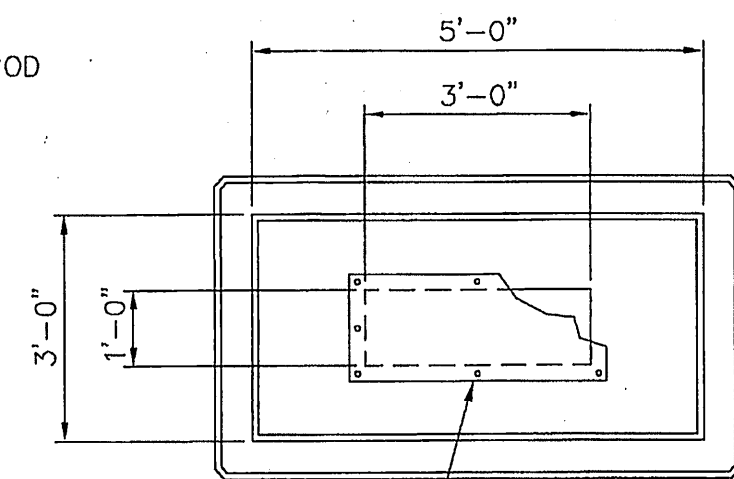
FIXTURE SCHEDULE			
MARK	LAMPS	TYPE	DESCRIPTION (MFG)
F	1	HPS	HUBBELL FLOODLIGHT (250W) w/ MOGUL BASE, TRUNNION YOKES, POLE MOUNTING BASE, & HARDWARE, POLYCARBONATE LENS (MHS0250S268LL)

FIXTURE IS TO BE OPERATED BY PHOTO CELL.

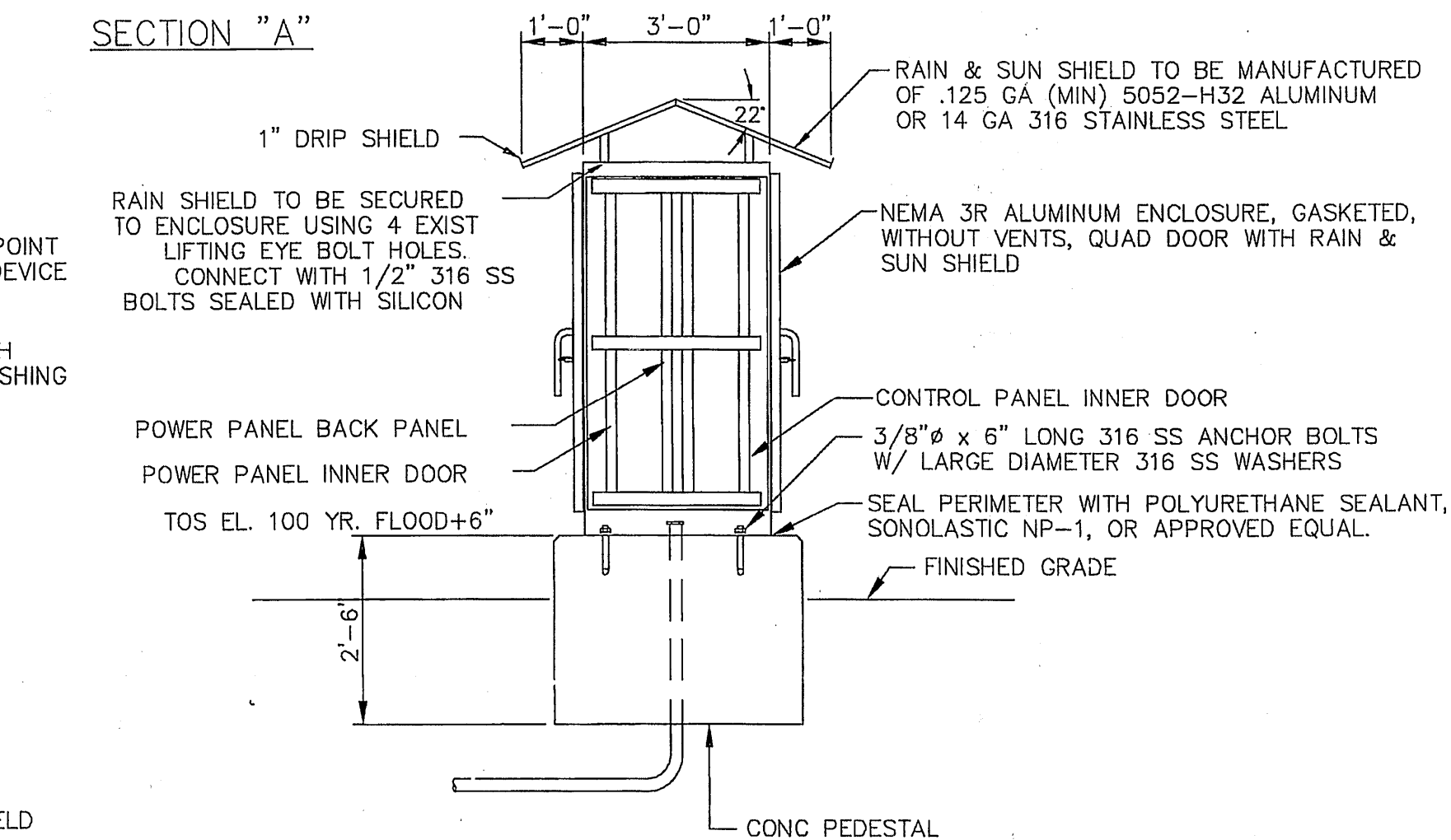
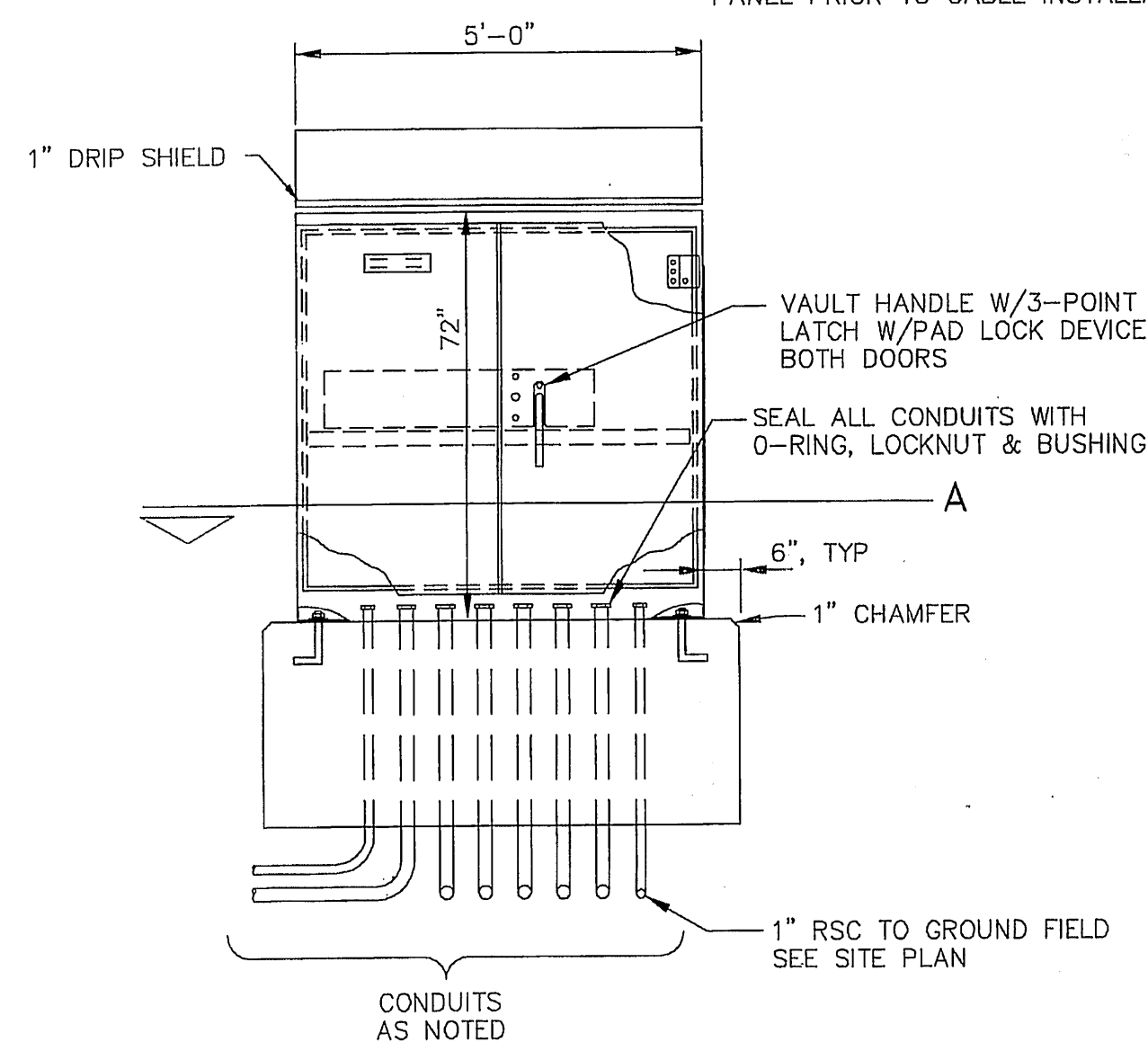
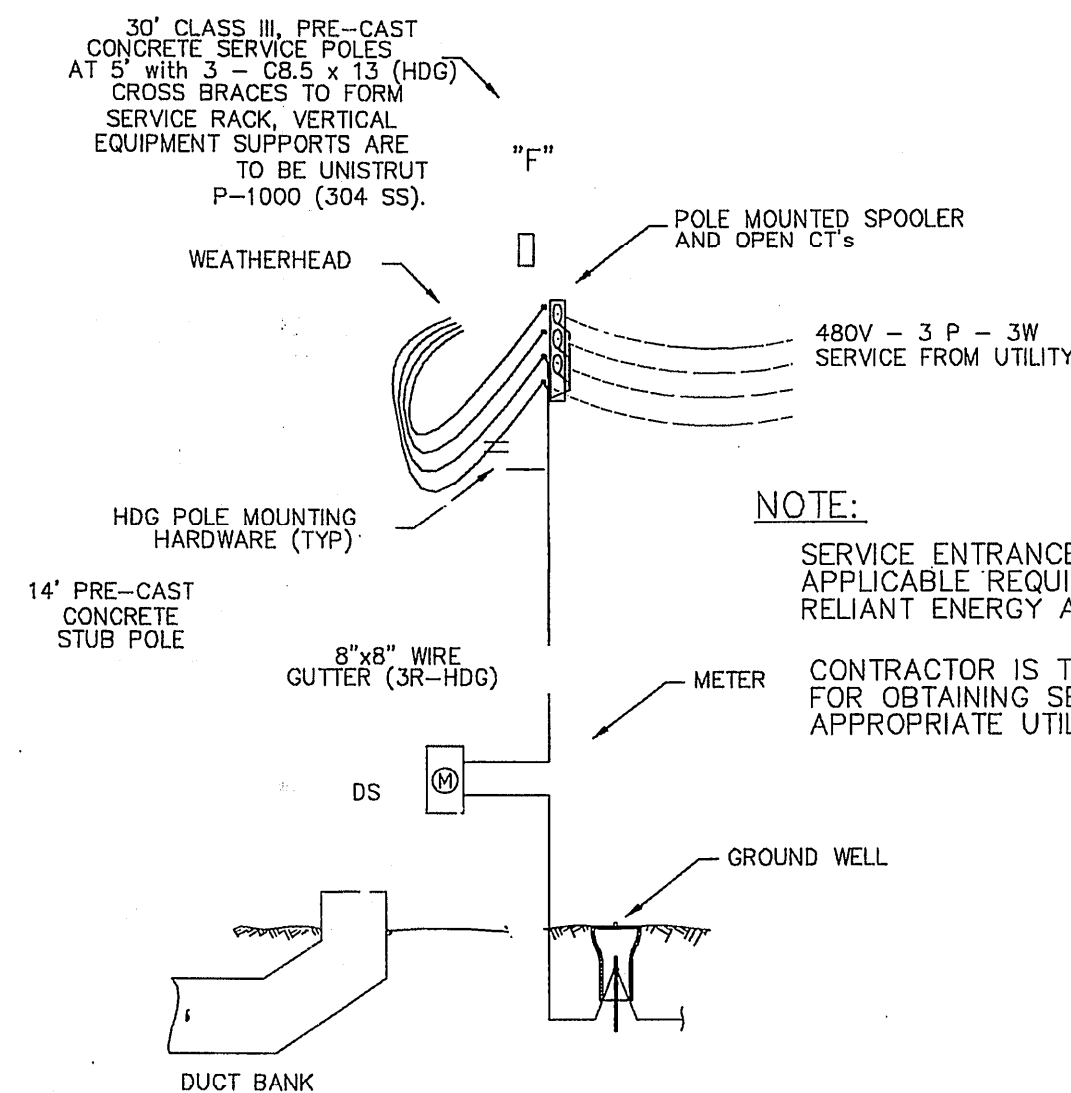
NOTE:
SERVICE ENTRANCE TO MEET ALL APPLICABLE REQUIREMENTS OF RELIANT ENERGY AND SWBT.
CONTRACTOR IS TO BE RESPONSIBLE FOR OBTAINING SERVICE FROM THE APPROPRIATE UTILITIES, AS REQUIRED.



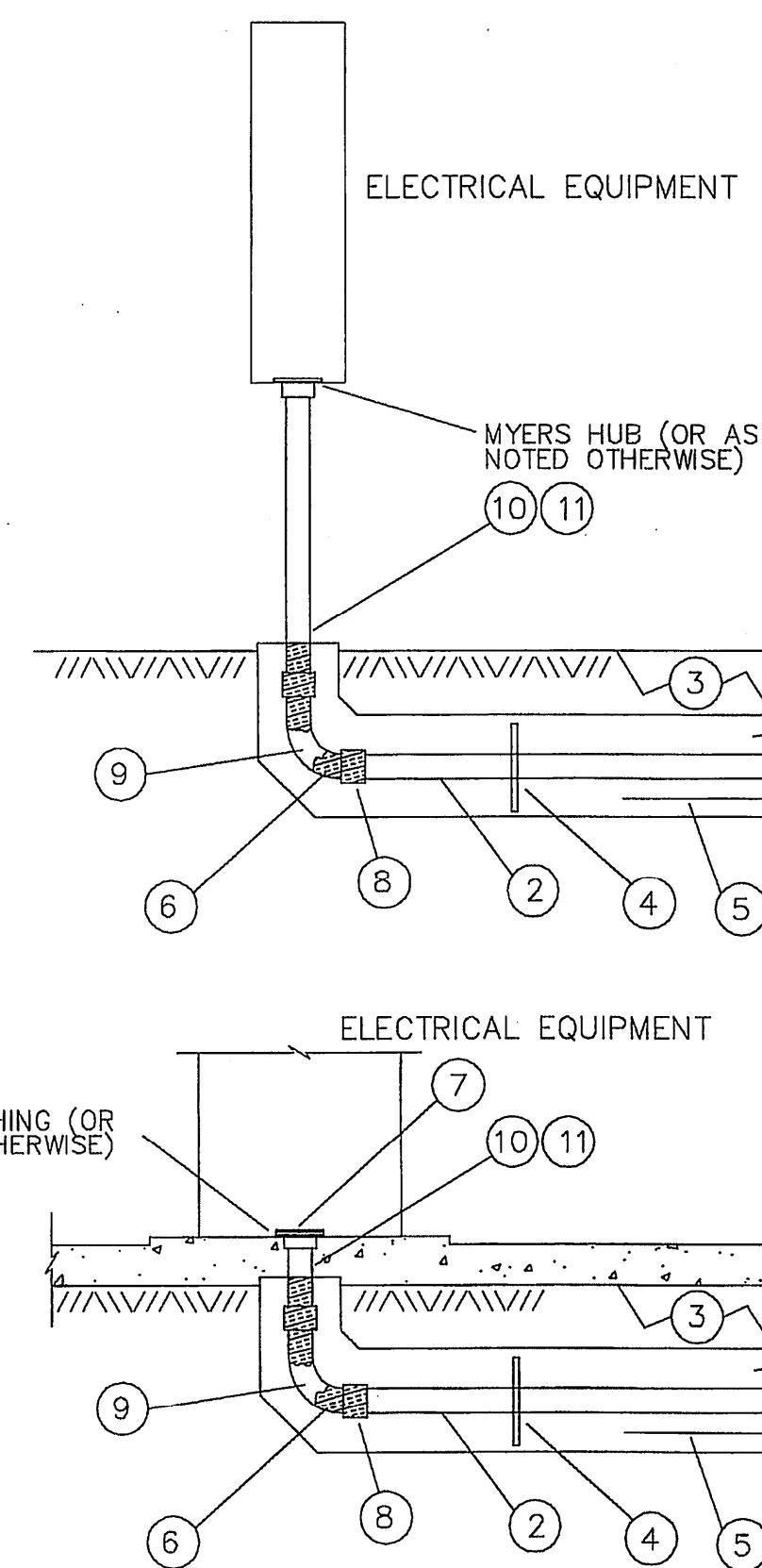
GROUND WELL DETAIL (TYPICAL)



PROVIDE A 12" X 36" OPENING & REMOVABLE PANEL IN BOTTOM PANEL OF ENCLOSURE. INSTALL ALL CONDUITS THROUGH THIS SPACE. DRILL & REINSTALL REMOVABLE PANEL PRIOR TO CABLE INSTALLATION.



CONTROL CABINET ENCLOSURE & FOUNDATION



1. UNDERGROUND CONDUIT SHALL BE ENCASED IN AN ENVELOPE OF CONCRETE COLORED RED.
2. SEE DESIGN DRAWINGS FOR NUMBER AND SIZE OF CONDUITS. TYPE OF UNDERGROUND CONDUIT IS TO BE AS SPECIFIED ON THE DRAWINGS/SPECIFICATIONS.
3. CONDUIT SPACING, CONCRETE COVER, AND DEPTH OF TRENCH ARE TO BE PER THE LATEST VERSION OF THE NATIONAL ELECTRICAL CODE. PROVIDE WARNING TAPE 12" ABOVE CONCRETE ENVELOPE.
4. PROVIDE PLASTIC COMPOSITION CONDUIT SPACERS AT 10'-0" O.C. OR A MINIMUM OF ONE SUPPORT PER UNIT.
5. PROVIDE ONE #3 BAR - CONTINUOUS PER VERTICAL ROW OF CONDUIT PLACED IN THE BOTTOM OF THE CONCRETE ENVELOPE. PROVIDE ADDITIONAL OR ALTERNATE REINFORCING AS NOTED ON THE DRAWINGS. PROVIDE #3 TIES AT 48" O.C. OR AS NOTED OTHERWISE.
6. RIGID STEEL ELBOWS, COUPLINGS AND NIPPLES IN THE RISER SHALL BE PROTECTED WITH FACTORY APPLIED PVC COATING OR TAPED WITH TWO LAYERS, HALF-LAPPED SCOTCH NO. 88 TAPE.
7. PROTECT EXPOSED CONDUIT ENDS DURING CONSTRUCTION WITH PIPE OR PLUG CAPS. FUTURE AND SPACE CONDUIT ENDS SHALL HAVE PIPE PLUGS OR CAPS.
8. PROVIDE AN ADAPTER FROM PVC TO METALIC CONDUIT.
9. ELBOWS SHALL BE LONG RADIUS, RIGID GALVANIZED STEEL (RGS) WITH A MINIMUM BEND RADIUS OF 10 TIMES THE CONDUIT DIAMETER.
10. PROVIDE RGS CONDUIT RISERS OR AS NOTED OTHERWISE.
11. ON ALL TERMINATED UNDERGROUND RISERS PROVIDE A 3 TO 5 FOOT NIPPLE TO ELIMINATE EXTRANEOUS CONCRETE FROM THE DUCT. PRIOR TO THE CONCRETE TAKING A SET, REMOVE THE NIPPLE AND CAP OR PLUG THE RISER.

EQUIPMENT CONNECTION & EMBEDDED CONDUIT DETAIL (TYPICAL)

BENCH MARK

BENCHMARK: NATIONAL GEODETIC SURVEY MARKER
Y1216, 1973 ADJ., ELEV = 125.994
Y1216, 1978 ADJ., ELEV = 125.406
Y1216, 1988 ADJ., ELEV = 123.94
ELEVATIONS ARE BASED ON 1973 ADJUSTMENT

PROVIDENT CONSULTING, INC.
1405 ALLSTON ST.
HOUSTON, TEXAS 77008
(713)802-1019

PCI
PROVIDENT CONSULTING, INC.

BOBBY K. WILSON
25963
PROFESSIONAL ENGINEER
9-5-05

PRIVATE UTILITY LINES SHOWN

CENTERPOINT ENERGY, ENTEX

SBC VALID FOR ONE YEAR
APPROVED ONLY FOR UNDERGROUND CONDUIT FACILITIES

CENTERPOINT ENERGY
APPROVED ONLY FOR DESIGNING UNDERGROUND DUCTILES
UNLESS NOTED VALID AT TIME OF REVIEW ONLY.

VILLAS AT WILLOWBROOK
HARRIS COUNTY MUD 191
HARRIS COUNTY, TEXAS

ELECTRICAL PLAN AND DETAILS

WATER
STORMWATER
TRAFFIC
SWD

FILE NO:

FILE NO:

DRAWING SCALE:
AS SHOWN

VERT: HORZ:

SHEET No: 23 OF 24

PROVIDENT CONSULTING, INC.
40820
HOUSTON, TEXAS