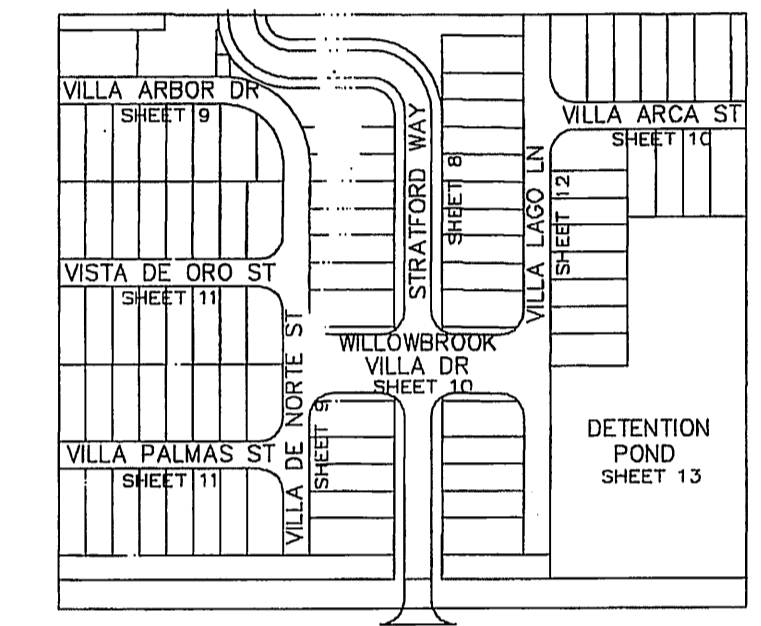
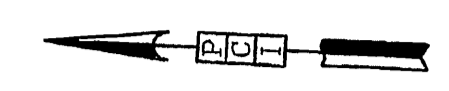


STEEPLECHASE  
APARTMENTS  
FILM CODE NO. 418086

CHAMPIONS ARBOR  
FILM CODE NO. 448016



SHEET INDEX

A c r e a g e

Privately owned utilities within private properties  
shall be reviewed  
and released by the County Engineer's Office.

**BENCH MARK**  
BENCHMARK NATIONAL GEODETIC SURVEY MARKER  
Y1216, 1973 ADJ., ELEV = 125.994  
Y1216, 1978 ADJ., ELEV = 125.406  
Y1216, 1988 ADJ., ELEV = 123.94  
ELEVATIONS ARE BASED ON 1973 ADJUSTMENT

**FLOOD PLAIN STATEMENT:**  
No portion of this tract lies within a "100 year flood hazard area" as designated on The National Flood Insurance Program - Flood Insurance Rate Map issued by the Federal Emergency Management Agency under Community Panel Number 480287 0435 J for Harris County, Texas dated November 6, 1996.

- LEGEND**
- STORM SEWER W/ MANHOLE
  - TYPE B-B INLETS
  - ▣ TYPE C INLET
  - DIRECTION OF STREET DRAINAGE
  - ⊥ STOP SIGN (R1-1A)
  - ♿ WHEELCHAIR RAMP

PROVIDENT CONSULTING, INC.  
1405 ALLSTON ST.  
HOUSTON, TEXAS 77008  
(713)802-1019

**PROVIDENT CONSULTING, INC.**

PRIVATE UTILITY LINES SHOWN  
CENTERPOINT ENERGY, ENTEX  
SBC VALID FOR ONE YEAR  
APPROVED ONLY FOR UNDERGROUND CONDUIT FACILITIES  
CENTERPOINT ENERGY  
APPROVED ONLY FOR CROSSING UNDERGROUND FACILITIES  
UNLESS NOTED VALID AT TIME OF REVIEW ONLY.

VILLAS AT WILLOWBROOK  
IN  
HARRIS COUNTY MUD 191  
HARRIS COUNTY, TEXAS  
**OVERALL LAYOUT  
PAVING & DRAINAGE**

RESTRICTED RESERVE "A"  
COMPENSATING OPEN SPACE  
AND DETENTION/DRAINAGE  
63,962 S.F. - 1.4684 AC.

RESTRICTED RESERVE "B"  
OPEN SPACE  
1,448 S.F. - 0.0332 AC.

RESTRICTED RESERVE "C"  
OPEN SPACE  
7,412 S.F. - 0.1702 AC.

RESTRICTED RESERVE "D"  
OPEN SPACE  
3,065 S.F. - 0.0704 AC.

WATER	WASTEWATER	TRAFFIC
ST. & BRIDGE	STORMWATER	SWQ
FILE NO:	DRAWING SCALE: 1" = 50'	
DRAWING SCALE:	VERT:    HORZ:	
FILE NO:	SHEET No: 6 OF 24	

