

BENCH MARK
 BENCHMARK: NATIONAL GEODETIC SURVEY MARKER
 Y1216, 1973 ADJ., ELEV = 125.994
 Y1216, 1978 ADJ., ELEV = 125.406
 Y1216, 1988 ADJ., ELEV = 123.94
 ELEVATIONS ARE BASED ON 1973 ADJUSTMENT

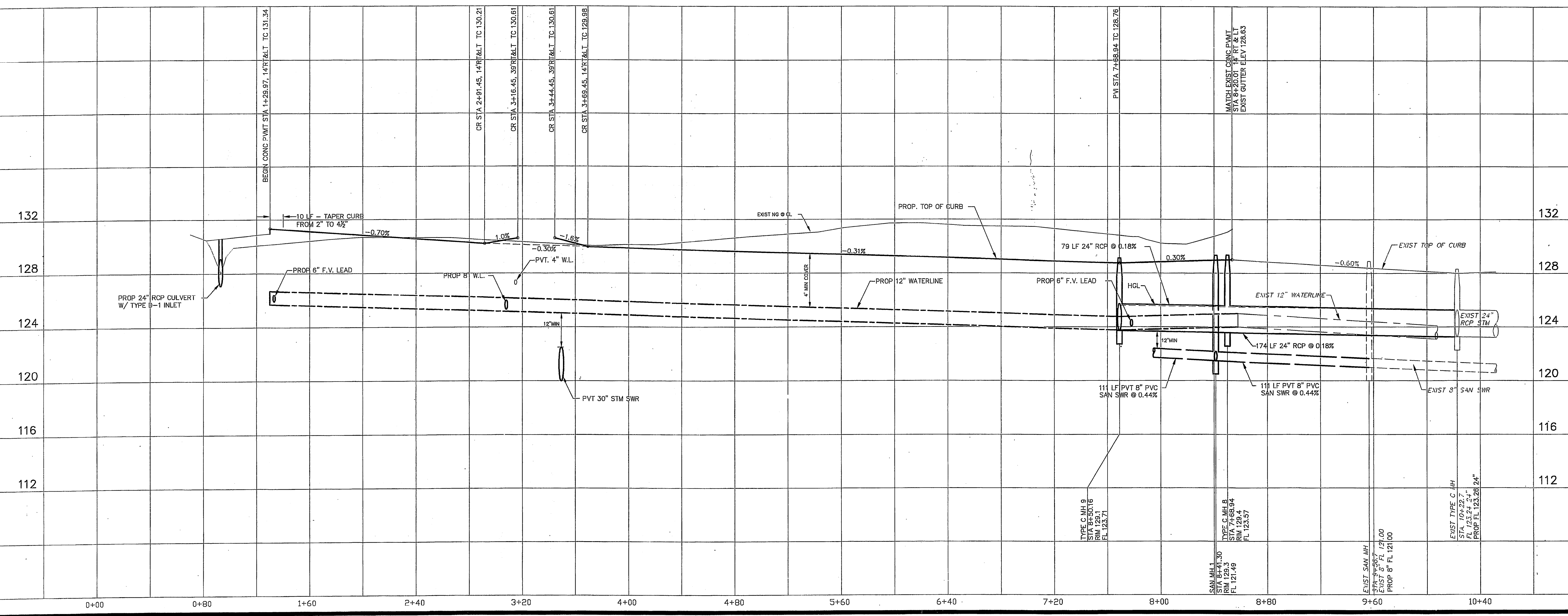
CROSSING NOTE
 When sanitary sewer and waterline cross, both shall be constructed in strict accordance with City of Houston 'Infrastructure Design Manual' Table 7.4: Protection Requirements at Water Line - Sanitary Sewer Crossings. See SHEET 12.

FILL NOTE
 Fill to be placed in maximum 8" lifts to 95% Standard Proctor Density \pm 2% optimum moisture. Existing swales and ponds to shall be cleaned and mucked free from vegetation prior to placement of fill material.

WATERLINE PROTECTION NOTE:
 When sanitary sewer and waterline cross, both shall be constructed in strict accordance with City of Houston 'Infrastructure Design Manual' Table 7.4: Protection Requirements at Water Line - Sanitary Sewer Crossings. See GENERAL NOTES SHEET

CURVE TABLE					
CURVE	LENGTH	RADIUS	TANGENT	CHORD BEARING	DELTA
C1	78.81'	50.00'	50.07'	70.78'	N42-28'13"E 90-04'43"
C2	78.84'	50.00'	50.00'	70.71'	S42-29'51"W 180-00'00"

STRATFORD WAY



PRIVATE UTILITY LINES SHOWN

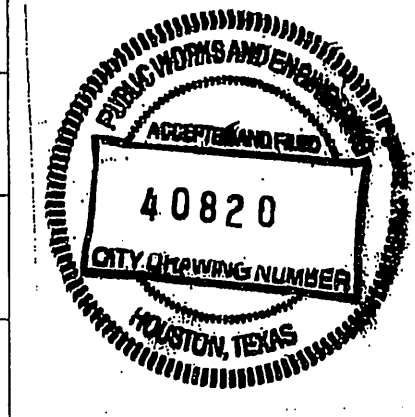
CENTERPOINT ENERGY, ENTEX
 SBC VALID FOR ONE YEAR
 APPROVED ONLY FOR UNDERGROUND CONDUIT FACILITIES

CENTERPOINT ENERGY
 APPROVED ONLY FOR DRIVING UNDERGROUND FACILITIES
 UNLESS NOTED VALID AT TIME OF REVIEW ONLY.

VILLAS AT WILLOWBROOK
 in
 HARRIS COUNTY MUD 191
 HARRIS COUNTY, TEXAS
 PLAN & PROFILE
STRATFORD WAY

WATER: *K. Williams 9/1/05*
 ST. & BRIDGE: *9/1/05*
 STORMWATER: *9/1/05*
 TRAFFIC: *9/1/05*
 SWD: *9/1/05*

FILE NO:
 DRAWING SCALE:
 1" = 40'
 VERT: 4' HORZ: 40'
 SHEET No: 8 OF 24



PROVIDENT CONSULTING, INC.
 1405 ALLSTON ST.
 HOUSTON, TEXAS 77008
 (713)802-1019