

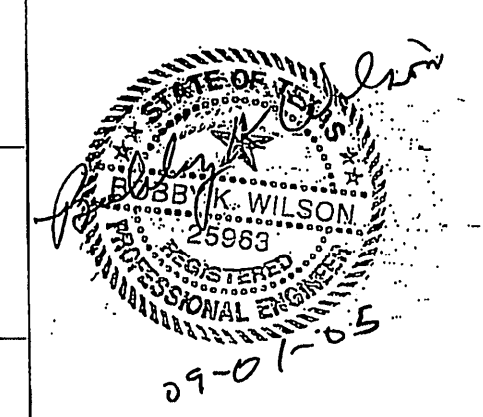
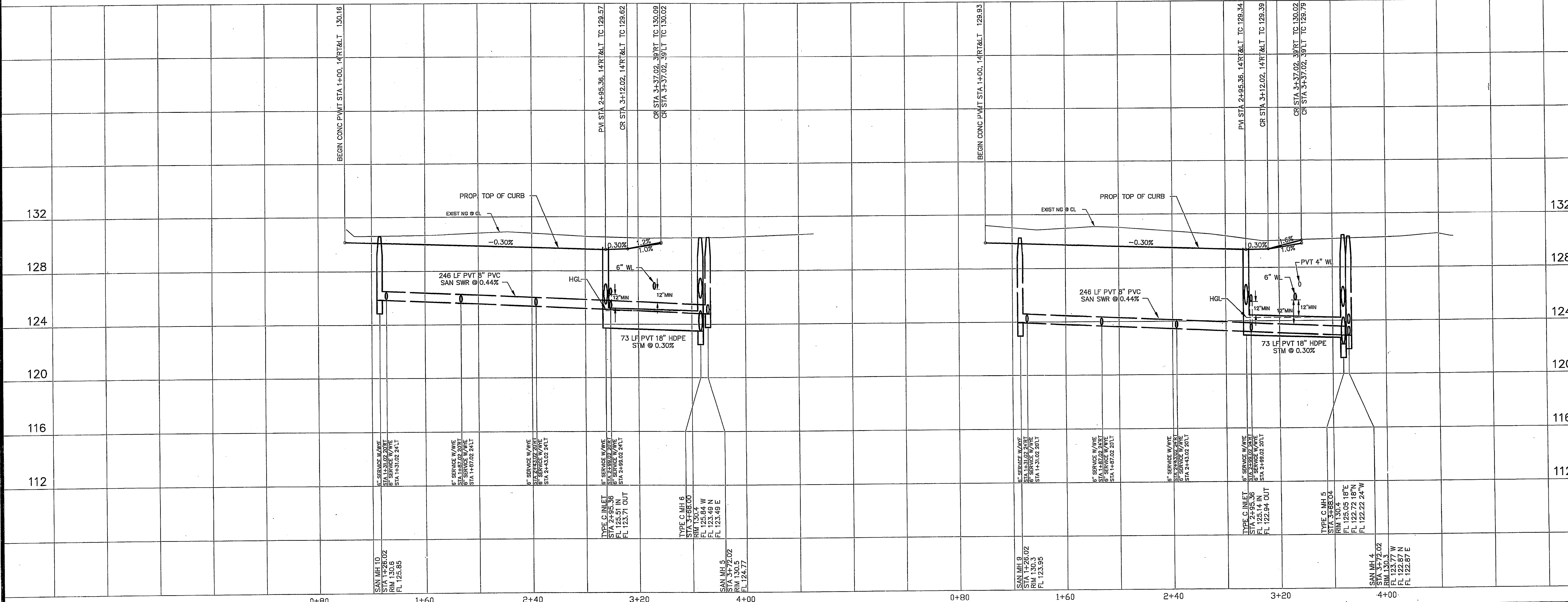
**WATERLINE PROTECTION NOTE:**  
 When sanitary sewer and waterline cross, both shall be constructed in strict accordance with City of Houston Infrastructure Design Manual Table 7.4: Protection Requirements of Water Line - Sanitary Sewer Crossings. SEE GENERAL NOTES SHEET

**VILLA PALMAS STREET**  
PRIVATE STREET

**VISTA DE ORO STREET**  
PRIVATE STREET

**BENCH MARK**  
 BENCHMARK: NATIONAL GEODETIC SURVEY MARKER  
 Y1216, 1973 ADJ., ELEV = 125.994  
 Y1216, 1978 ADJ., ELEV = 125.406  
 Y1216, 1988 ADJ., ELEV = 123.94  
 ELEVATIONS ARE BASED ON 1973 ADJUSTMENT

**FILL NOTE**  
 Fill to be placed in maximum 8" lifts to 95% Standard Proctor Density ± 2% optimum moisture. Existing snags and ponds to shall be cleaned and mucked free from vegetation prior to placement of fill material.



**PROVIDENT CONSULTING, INC.**  
 1405 ALLSTON ST.  
 HOUSTON, TEXAS 77008  
 (713)802-1019

**PRIVATE UTILITY LINES SHOWN**

WATER	WASTEWATER	TRAFFIC
ST. & BRIDGE	STORMWATER	SWG

FILE NO:  
 DRAWING SCALE:  
 1" = 40'  
 VERT: 4' HORZ: 40'  
 SHEET No: 11 OF 24

**40820**  
 CITY DRAWING NUMBER  
 HOUSTON, TEXAS