

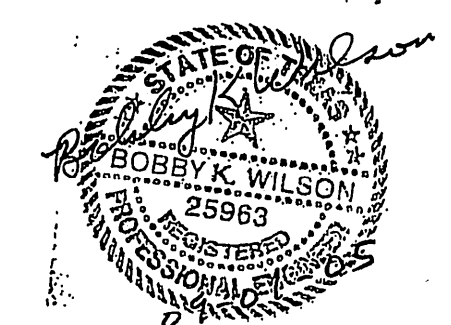
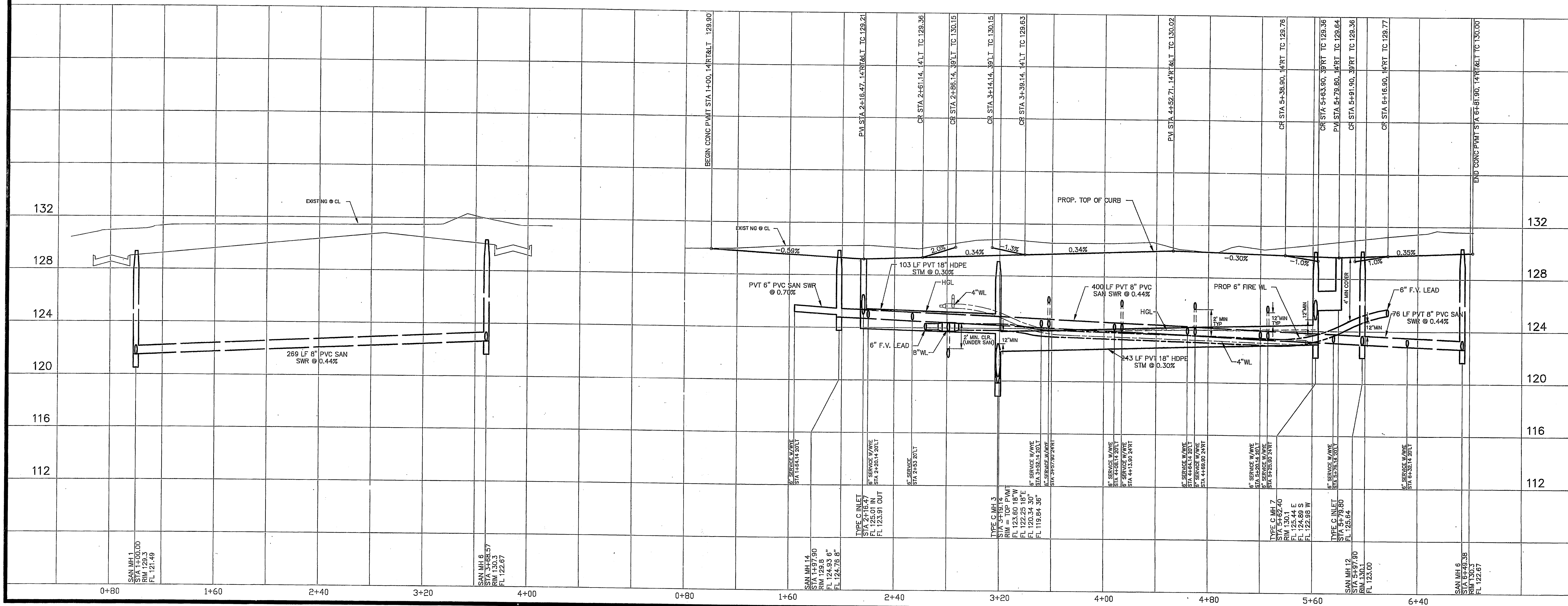
**BENCH MARK**  
 BENCHMARK: NATIONAL GEODETIC SURVEY MARKER  
 Y1216, 1973 ADJ., ELEV = 123.994  
 Y1216, 1978 ADJ., ELEV = 123.406  
 Y1216, 1988 ADJ., ELEV = 123.94  
 ELEVATIONS ARE BASED ON 1973 ADJUSTMENT

**FILL NOTE**  
 Fill to be placed in maximum 8" lifts to 95% Standard Proctor Density at 2% optimum moisture. Existing swales and ponds to shall be cleaned and mucked free from vegetation prior to placement of fill material.

**WATERLINE PROTECTION NOTE:**  
 When sanitary sewer and waterline cross, both shall be constructed in strict accordance with City of Houston "Infrastructure Design Manual" Table 7.4: Protection Requirements at Water Line - Sanitary Sewer Crossings. SEE GENERAL NOTES SHEET

LATERAL 'A'

VILLA LAGO LANE  
 PRIVATE STREET



**PROVIDENT CONSULTING, INC.**  
 1405 ALLSTON ST.  
 HOUSTON, TEXAS 77008  
 (713)802-1019

PRIVATE UTILITY LINES SHOWN

CENTERPOINT ENERGY, ENTEX  
 SBC VALID FOR ONE YEAR  
 APPROVED ONLY FOR UNDERGROUND CONDUIT FACILITIES  
 CENTERPOINT ENERGY  
 APPROVED ONLY FOR UNDERGROUND CONDUITS  
 UNLESS NOTED VALID AT TIME OF REVIEW ONLY

VILLAS AT WILLOWBROOK  
 HARRIS COUNTY MUD 191  
 HARRIS COUNTY, TEXAS  
 PLAN & PROFILE  
**VILLA LAGO LANE**  
 LATERAL 'A'

WATER	WASTEWATER	TRAFFIC
ST. & BRIDGE	STORMWATER	SWQ

FILE NO:  
 DRAWING SCALE:  
 1" = 40'  
 VERT: 4' HORZ: 40'  
 SHEET No: 12 OF 24

