

FLOOD PLAIN DATA
 ALL OF THIS PROPERTY LIES WITHIN ZONE "X-UNSHADED" FLOODPLAIN PER THE FLOOD INSURANCE RATE MAP, COMMUNITY PANEL NO. 48201C0435-M, WHICH BEARS AN EFFECTIVE DATE OCTOBER 16, 2013. ZONE "X-UNSHADED" DENOTES AREA OUTSIDE THE 500 YEAR FLOODPLAIN.

BENCHMARK
 RM 150770: FLOODPLAIN REFERENCE MARK NUMBER 150770 IS AN HGCS STAINLESS STEEL ROD STAMPED HGCS 11 1986 AT INTERSECTION OF FM 1960 AND BRETON RIDGE STREET LOCATED IN THE GROUND, NORTH OF INTERSECTION, WEST OF JARED JEWELER PARKING LOT IN KEYMAP 370E IN THE GREENS WATERSHED NEAR STREAM P150-00-00 ELEVATION = 120.92' (NAVO 1988, 2001 ADJUSTED)

NOTE:
 CONTRACTOR SHALL CONFIRM NO CONFLICTS BETWEEN EXISTING AND PROPOSED DRY/WET UTILITIES IN PUBLIC R.O.W. BEFORE STARTING SITE WORK CONSTRUCTION.

HYDROMULCH NOTE:
 CONTRACTOR SHALL HYDROMULCH ALL NEWLY GRADED AREAS AND EXPOSED SOILS UPON UTILITY INSTALLATION COMPLETION.

LINE	DISTANCE	BEARING
L1	1.84'	S 03°19'57" E
L2	114.08'	N 03°05'41" W

RULES AND REGULATIONS RELATING TO PERMITS, PLUMBING AND MAKING CONNECTIONS TO WATER AND SEWER FACILITIES OF HARRIS COUNTY MUNICIPAL UTILITY DISTRICT NO. 151

Permit Required. A permit issued by the District is required for: (1) making a new connection to the District's water or sanitary sewer system; or (2) altering the facilities (or their uses) served by an existing connection or making another change affecting the load on the water or sanitary sewer system of the District (e.g., changing fixtures or space served, changing the use of fixtures or space, changing type of occupancy, etc.).

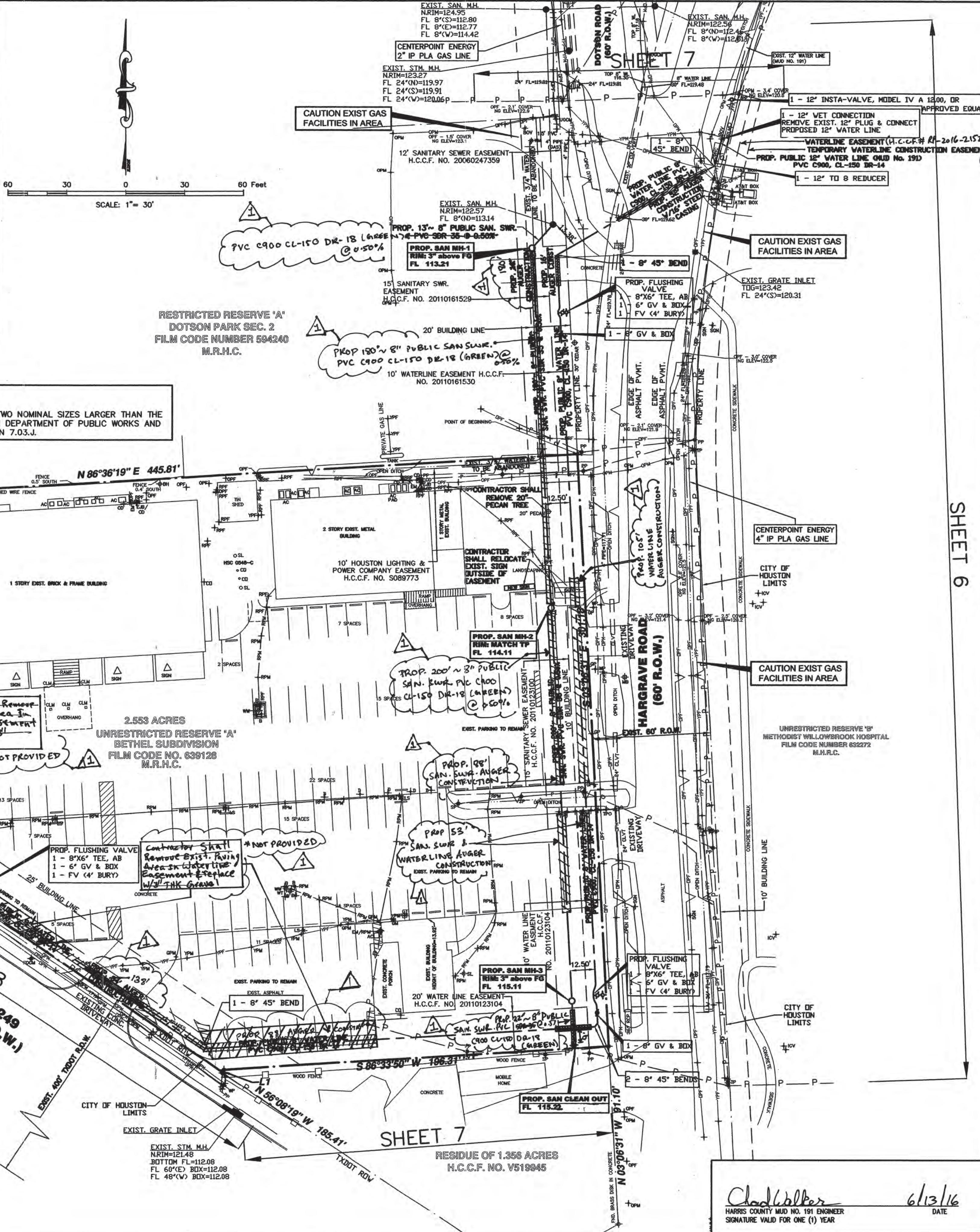
Permit Conditions. Permit conditions include:
 A. ONLY THE DISTRICT OR ITS OPERATOR (OR A PERSON AUTHORIZED BY THE OPERATOR) MAY DISTURB, TAP, ALTER OR CONNECT TO THE DISTRICT'S FACILITIES.
 B. CONNECTION MAY NOT BE MADE, AND SERVICE MAY NOT BE PROVIDED OR CONTINUED, UNLESS: (1) the entire Permitted Parcel has been duly platted and recorded as required by City of Houston subdivision regulations; (2) plans and specifications for all buildings and other improvements and all water and sanitary sewer facilities and fixtures (on-site and off-site) have been submitted to, and have received written approval from, the District's engineer (and such facilities and fixtures must include meters and protective equipment as may be prescribed by the engineer, e.g., meters, valves, valves, backflow preventers, flow detectors, grit chambers, grease traps, sampling wells, etc.); (3) each point of connection to District facilities has been designated by the District's engineer; (4) all facilities and fixtures on the District's side of a designated point of connection have been completed at Permittee's sole expense (if any construction or alteration is necessary), inspected by the District operator, approved by the District operator and engineer, conveyed to the District (by instrument approved by the attorney for the District), accepted by the District's Board and placed in service; (5) all water and sewer facilities and fixtures located on the customer side of a designated point of connection—including any water facilities, gravity sewer facilities, sewer pumping facilities and sewer force mains—have been completed (at Permittee's sole expense) inspected by the District operator and passed (8) being understood that ownership of such facilities and fixtures—and responsibility for their operation, maintenance, replacement and repair—will remain with Permittee or the customer and not be transferred to the District; (6) all on-site water, sanitary sewer and drainage facilities and fixtures, including plumbing of all buildings to be served, have been completed, inspected by the District's operator and passed; however, if only some of the facilities, fixtures and plumbing have been completed, the remainder may not be served under this permit unless they are completed, inspected and passed before the end of the Permit Period; (7) actual capacity needed to serve the Permitted Use (and all buildings, improvements and fixtures on the Permitted Parcel) must be less than or equal to the Permitted Capacity, in the opinion of the District's engineer; (8) all tap fees, permit fees, plan review fees, inspection fees and other fees and deposits have been paid, for the entire Permitted Parcel and the entire Permitted Use; (9) service agreements covering the entire Permitted Parcel have been duly signed as required by the District's regulations; (10) if required by the District's operator, a service agreement or notice regarding operation, maintenance, replacement and repair responsibilities has been signed and acknowledged by the property owner and recorded in the real property records; and (11) all other applicable regulations have been complied with.

C. ALL PERMIT CONDITIONS—INCLUDING THE REQUIREMENTS TO SUBMIT PLANS, ARRANGE INSPECTIONS AND OBTAIN APPROVALS—MAY NOT BE FULFILLED AGAIN IF FACILITIES OR FIXTURES ARE ADDED OR CHANGED, OR IF ADDITIONAL BUILDING SPACE IS FINISHED OR BUILT-OUT, OR IF THE TYPE OF OCCUPANCY CHANGES. SUCH CONDITIONS MUST BE FULFILLED BEFORE FACILITIES ARE ADDED OR CHANGED, AND BEFORE ANY CHANGE IN OCCUPANCY. A NEW PERMIT MAY ALSO BE REQUIRED.
 D. OTHER: (1) A permit is only a conditional permission to proceed; (2) all work and connections must comply with the approved plans and all applicable laws, rules and regulations, including the District's rate order and other regulations; (3) permits can be revoked or suspended; they do not confer any property right or vested right of any kind.

STEEL CASING NOTE:
 STEEL CASING SHALL BE AT LEAST TWO NOMINAL SIZES LARGER THAN THE CARRIER PIPE PER CITY OF HOUSTON DEPARTMENT OF PUBLIC WORKS AND ENGINEERING DESIGN MANUAL SECTION 7.03.J.

- LEGEND:**
- A = ASPHALT
 - AC = AIR CONDITIONER
 - AP = AT&T PULL HOLE
 - B = BOLLARD
 - BH = BORE HOLE
 - C/CONC = CONCRETE
 - CTB = CONTROL BOX
 - CLD = CENTERLINE OF DITCH
 - CLRD = CENTERLINE OF ROAD
 - CLM = COLUMN
 - CLVT = CULVERT
 - CD = CLEAN OUT
 - D = DRAIN
 - DG = DOWN GUY
 - DR.H.C. = DEED RECORDS HARRIS COUNTY, TEXAS
 - EA = EDGE OF ASPHALT
 - EM = ELECTRIC METER
 - EJB = ELECTRIC JUNCTION BOX
 - F.F. = FINISHED FLOOR
 - FDC = FIBER OPTIC CABLE
 - FDCM = FIBER OPTIC CABLE MARKER
 - GP = GATE POST
 - GL = GROUND LIGHT
 - GM = GAS METER
 - GT = GREASE TRAP
 - GPM = GAS PAINT MARKER
 - GV = GAS VALVE
 - HB = HIGH BANK
 - H.C.C.F. = HARRIS COUNTY CLERK'S FILE
 - MB = MAIL BOX
 - M.R.H.C. = MAP RECORDS HARRIS COUNTY, TEXAS
 - NG = NATURAL GROUND
 - NOI = NUMBER
 - OPM = ORANGE PAINT MARKER
 - DVH = OVERHANG
 - PP = POWER POLE
 - RPF = RED PINFLAG
 - RPM = RED PAINT MARKER
 - SL = SEPTIC LID
 - SGN = SIGN
 - STMM = STORM MANHOLE
 - TBM = TEMPORARY BENCHMARK
 - TC = TOP OF CURB
 - TP = TELEPHONE PEDESTAL
 - TPD = T-POST
 - UP = UTILITY POLE
 - VT = WATER TANK
 - VV = WATER VELL
 - WP = WOOD POST
 - YPS = YELLOW PAINT STRIPE
 - OPM = ORANGE PAINT MARKER (COMMUNICATION)
 - OPF = ORANGE PINFLAG (COMMUNICATION)
 - YPM = YELLOW PAINT MARKER (GAS/CENTERPOINT)
 - YPF = YELLOW PINFLAG (GAS/CENTERPOINT)
 - RPF = RED PINFLAG (ELECTRICK/CENTERPOINT)
 - RPM = RED PAINT MARKER (ELECTRICK/CENTERPOINT)

- LEGEND**
- PROPERTY LINE
 - STORM SEWER
 - WASTEWATER
 - WATER LINE
 - NOT IN CONTRACT
 - FIRE HYDRANT (FH)
 - GATE VALVE
 - WASTEWATER MANHOLE
 - STORM SEWER MANHOLE
 - CLEAN-OUT
 - INLINE CLEAN OUT
 - PROPOSED WATER METER



WARNING
 OVERHEAD AND UNDERGROUND UTILITIES MAY EXIST IN THE VICINITY OF THIS PROJECT. LOCATIONS SHOWN FOR EXISTING UTILITIES ARE APPROXIMATE AND OTHER UTILITIES MAY EXIST IN THE VICINITY OF THE PROJECT WHICH ARE NOT SHOWN ON THE PLANS. IT IS THE RESPONSIBILITY OF THE CONTRACTOR TO LOCATE EXACT ALL EXISTING UTILITIES IN THE VICINITY OF THE PROJECT, PRIOR TO BEGINNING CONSTRUCTION. IF ANY DISCREPANCY EXISTS, NOTIFY ENGINEER.

ONE-CALL NOTIFICATION SYSTEM
CALL BEFORE YOU DIG
 48 HOURS NOTICE BEFORE YOU DIG, DRILL, OR BLAST - STOP CALL TEXAS811 (DIG TESS)(1-800-844-8377) OR LONE STAR NOTIFICATION CENTER (1-800-868-8344)

NO. REVISIONS	DATE
1	AS-BUILT CORRECTIONS
2	12-5-16

TO ARRANGE FOR LINES TO BE TURNED OFF OR MOVED, CALL CENTERPOINT ENERGY AT 713-207-2222
NOTICE:
 FOR YOUR SAFETY, YOU ARE REQUIRED BY TEXAS LAW TO CALL 811 AT LEAST 48 HOURS BEFORE YOU DIG SO THAT UNDERGROUND LINE CAN BE MARKED. THIS VERIFICATION DOES NOT FULFILL YOUR OBLIGATION TO CALL 811.

PRIVATE UTILITY LINES SHOWN
 AT&T TEXAS/SWBT FACILITIES
 Approved for AT&T/SBC underground conduit facilities ONLY
 SIGNATURE VALID FOR ONE YEAR.

Signature Date: 1/27/16
 CENTERPOINT ENERGY/NATURAL GAS FACILITIES VERIFICATION ONLY.
 (THIS SIGNATURE VERIFIES THAT YOU HAVE SHOWN ONP NATURAL GAS LINES CORRECTLY.) NOT TO BE USED FOR CONFLICT VERIFICATION.) (GAS SERVICE LINES ARE NOT SHOWN.) SIGNATURE VALID FOR SIX MONTHS

Signature Date: 1/27/16
 CENTERPOINT ENERGY/UNDERGROUND ELECTRIC FACILITIES VERIFICATION ONLY. (THIS SIGNATURE VERIFIES EXISTING UNDERGROUND FACILITIES - NOT TO BE USED FOR CONFLICT VERIFICATION.) SIGNATURE VALID FOR SIX MONTHS



HEIGHTS ENGINEERING LLC
 CONSULTING ENGINEERS
 7324 SOUTHWEST FWY SUITE 995 HOUSTON, TX 77074
 PHONE: (713) 333-0393 FAX: (281) 274-9153
 www.HEIGHTSENGINEERING.com

PROP. 8" WATER LINE & 8" SANITARY SEWER
 ALONG HARGRAVE ROAD & S.H. 249
 TO SERVICE HARRIS COUNTY MUD #191
 OVERALL UTILITIES PLAN
 HEIGHTS PROJ. NO: 14-190 DRAWING NO: 14190400
 NOTE: CITY SIGNATURES VALID FOR ONE YEAR ONLY AFTER DATE OF SIGNATURES

CITY OF HOUSTON DEPARTMENT OF PUBLIC WORKS AND ENGINEERING	
WATER	TRAFFIC & TRANSPORTATION
WASTEWATER	STORM WATER QUALITY
STORM	FACILITIES
STREET & BRIDGE	

FILE NO.:
 DRAWING SCALE: HORIZ. 1" = 30'
 VERT. NA
 DRAWN BY: AHS
 CHECKED BY: RM
 CON LOG# 15-138
 SHEET NO: 4 OF 11



AS-BUILT