

FLOOD PLAIN DATA

ALL OF THIS PROPERTY LIES WITHIN ZONE "X-UNSHADED" FLOODPLAIN PER THE FLOOD INSURANCE RATE MAP, COMMUNITY PANEL NO. 48201C0435-M, WHICH BEARS AN EFFECTIVE DATE OCTOBER 16, 2013. ZONE "X-UNSHADED" DENOTES AREA OUTSIDE THE 500 YEAR FLOODPLAIN.

BENCHMARK

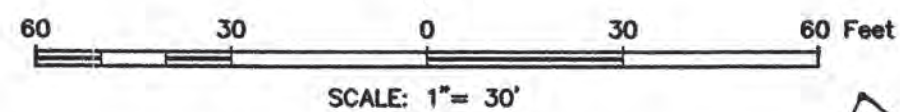
RM 150770: FLOODPLAIN REFERENCE MARK NUMBER 150770 IS AN HGCD STAINLESS STEEL ROD STAMPED HGCD 11 1986 AT INTERSECTION OF FM 1960 AND BRETON RIDGE STREET LOCATED IN THE GROUND, NORTH OF INTERSECTION, WEST OF JARED JEWELER PARKING LOT IN KEYMAP 370E IN THE GREENS WATERSHED NEAR STREAM P150-00-00 ELEVATION = 120.92' (NAVD 1988, 2001 ADJUSTED)

TBM: SQUARE CHISELED ON TOP OF INLET AT THE SOUTHWESTERLY RIGHT-OF-WAY LINE OF S.H. 249 AS INDICATED. ELEVATION = 122.36

LINE	DISTANCE	BEARING
L1	1.84'	S 03°19'57" E
L2	114.08'	N 03°05'41" W

TRAFFIC NOTES

- CONTRACTOR SHALL PROVIDE AND INSTALL TRAFFIC CONTROL DEVICES IN CONFORMANCE WITH PART VI OF TEXAS MANUAL ON UNIFORM TRAFFIC CONTROL DEVICES (TMUCD-LATEST EDITION WITH REVISIONS) DURING CONSTRUCTION.
- NO LANES SHALL BE BLOCKED DURING CONSTRUCTION.



WARNING

OVERHEAD AND UNDERGROUND UTILITIES MAY EXIST IN THE VICINITY OF THIS PROJECT. LOCATIONS SHOWN FOR EXISTING UTILITIES ARE APPROXIMATE AND OTHER UTILITIES MAY EXIST IN THE VICINITY OF THE PROJECT WHICH ARE NOT SHOWN ON THE PLANS. IT IS THE RESPONSIBILITY OF THE CONTRACTOR TO LOCATE EXACT ALL EXISTING UTILITIES IN THE VICINITY OF THE PROJECT, PRIOR TO BEGINNING CONSTRUCTION. IF ANY DISCREPANCY EXISTS, NOTIFY ENGINEER.

ONE-CALL NOTIFICATION SYSTEM CALL BEFORE YOU DIG

48 HOURS NOTICE BEFORE YOU DIG, DRILL, OR BLAST - STOP CALL TEXAS811 (DIG TESS)(1-800-344-8377) OR LONE STAR NOTIFICATION CENTER (1-800-869-8344)

NO. REVISIONS	DATE
1	AS-BUILT CORRECTIONS
	12-05-16

TO ARRANGE FOR LINES TO BE TURNED OFF OR MOVED, CALL CENTERPOINT ENERGY AT 713-207-2222

NOTICE

FOR YOUR SAFETY, YOU ARE REQUIRED BY TEXAS LAW TO CALL 811 AT LEAST 48 HOURS BEFORE YOU DIG SO THAT UNDERGROUND LINE CAN BE MARKED. THIS VERIFICATION DOES NOT FULFILL YOUR OBLIGATION TO CALL 811.

PRIVATE UTILITY LINES SHOWN

AT&T TEXAS/SBC FACILITIES Approved for AT&T/SBC underground conduit facilities ONLY SIGNATURE VALID FOR ONE YEAR.
 Date: 1-27-16
 HARRIS COUNTY CLERK'S FILE Approved for HARRIS COUNTY CLERK'S FILE SIGNATURE VALID FOR SIX MONTHS.
 Date: 1/27/16
 CENTERPOINT ENERGY/NATURAL GAS FACILITIES VERIFICATION ONLY. (THIS SIGNATURE VERIFIES THAT YOU HAVE SHOWN ONP NATURAL GAS LINES CORRECTLY) NOT TO BE USED FOR CONFLICT VERIFICATION.) (GAS SERVICE LINES ARE NOT SHOWN.) SIGNATURE VALID FOR SIX MONTHS.
 Date: 1/27/16
 CENTERPOINT ENERGY/UNDERGROUND ELECTRIC FACILITIES VERIFICATION ONLY. (THIS SIGNATURE VERIFIES EXISTING UNDERGROUND FACILITIES - NOT TO BE USED FOR CONFLICT VERIFICATION.) SIGNATURE VALID FOR SIX MONTHS.



HEIGHTS ENGINEERING LLC

CONSULTING ENGINEERS
 7324 SOUTHWEST FWY SUITE 905 HOUSTON, TX 77074
 PHONE: (713) 333-0393 FAX: (281) 274-9153
 www.HEIGHTSENGINEERING.com

PROP. 8" WATER LINE & 8" SANITARY SEWER
 ALONG HARGRAVE ROAD & S.H. 249
 TO SERVICE HARRIS COUNTY MUD #191
 STORM WATER POLLUTION PREVENTION PLAN
 HEIGHTS PROJ. NO: 14-190 DRAWING NO: 14190250
 NOTE: CITY SIGNATURES VALID FOR ONE YEAR ONLY AFTER DATE OF SIGNATURES

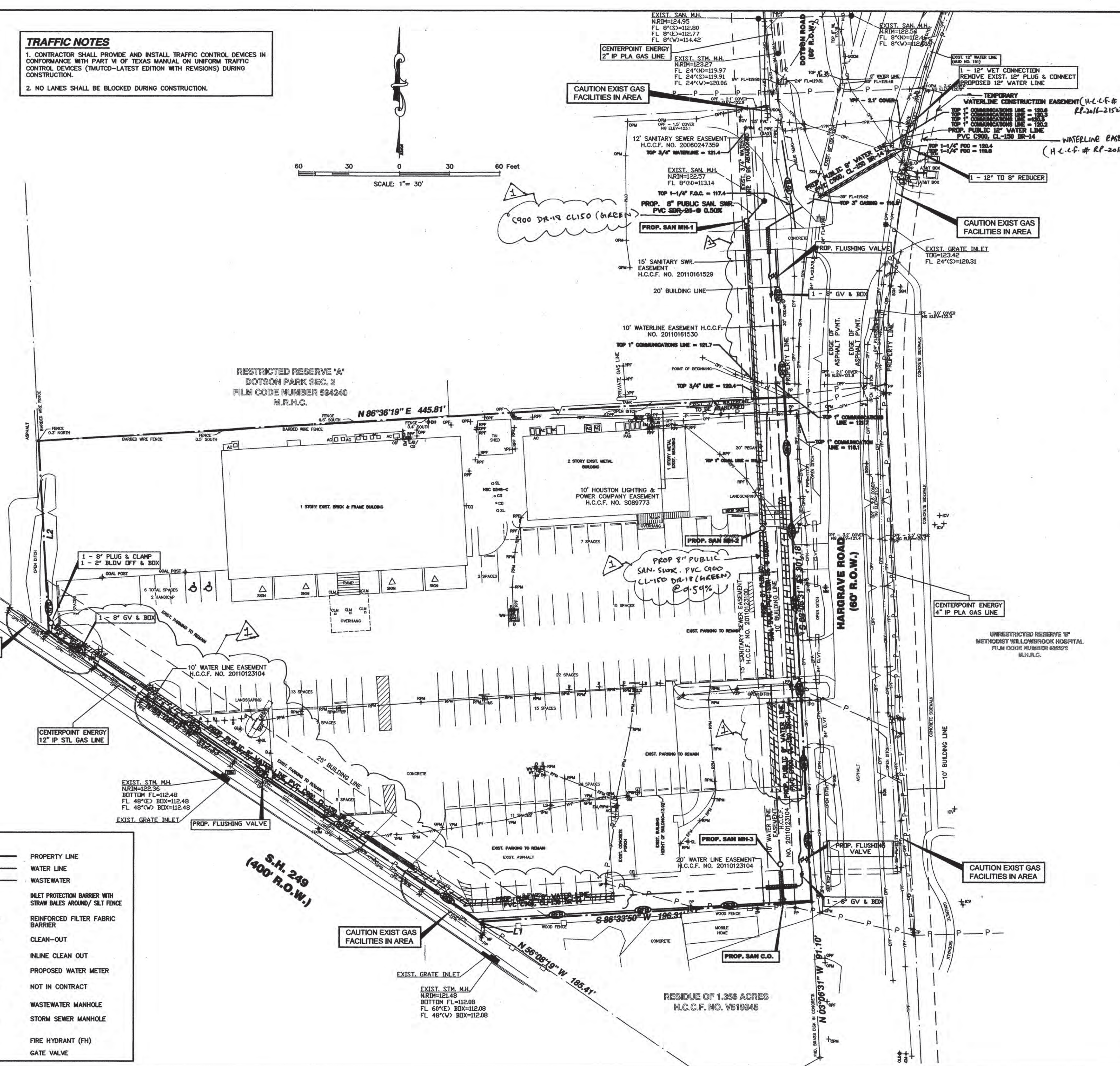
CITY OF HOUSTON
 DEPARTMENT OF PUBLIC WORKS AND ENGINEERING

WATER	TRAFFIC & TRANSPORTATION
WASTEWATER	STORM WATER QUALITY
STORM	FACILITIES
STREET & BRIDGE	

CITY DWG NO. 55439
 FILE NO.:
 DRAWING SCALE: HORIZ: 1" = 30' VERT: N/A
 DRAWN BY: SA
 CHECKED BY: RM
 CON LOG# 15-1136 SHEET NO. 5 OF: 11
AS-BUILT

- LEGEND:**
- A = ASPHALT
 - AC = AIR CONDITIONER
 - AP = AT&T PULL HOLE
 - B = BOLLARD
 - BH = BORE HOLE
 - C/CONC = CONCRETE
 - CTB = CONTROL BOX
 - CLD = CENTERLINE OF DITCH
 - CLR = CENTERLINE OF ROAD
 - CLM = COLUMN
 - CLVT = CULVERT
 - CO = CLEAN OUT
 - D = DRAIN
 - DG = DOWN GUY
 - D&R.H.C. = DEED RECORDS HARRIS COUNTY, TEXAS
 - EA = EDGE OF ASPHALT
 - EM = ELECTRIC METER
 - EJB = ELECTRIC JUNCTION BOX
 - F.F. = FINISHED FLOOR
 - FDC = FIBER OPTIC CABLE
 - FDCM = FIBER OPTIC CABLE MARKER
 - GP = GATE POST
 - GL = GROUND LIGHT
 - GM = GAS METER
 - GT = GREASE TRAP
 - GPW = GAS PAINT MARKER
 - GV = GAS VALVE
 - HB = HIGH BANK
 - H.C.C.F. = HARRIS COUNTY CLERK'S FILE
 - MB = MAIL BOX
 - M.R.H.C. = MAP RECORDS HARRIS COUNTY, TEXAS
 - NG = NATURAL GROUND
 - NEL = NUMBER
 - DPH = DRANGE PAINT MARKER
 - DVH = DVERHANG
 - PP = POWER POLE
 - RPF = RED PINFLAG
 - RPH = RED PAINT MARKER
 - SL = SEPTIC LID
 - SM = SIGN
 - STMH = STORM MANHOLE
 - TBM = TEMPORARY BENCHMARK
 - TC = TOP OF CURB
 - TP = TELEPHONE PEDESTAL
 - TPD = T-POST
 - UP = UTILITY POLE
 - VT = WATER TANK
 - VW = WATER WELL
 - VP = VOID POST
 - YPS = YELLOW PAINT STRIPE
 - DPM- = DRANGE PAINT MARKER (COMMUNICATION)
 - DPF- = DRANGE PINFLAG (COMMUNICATION)
 - YPM- = YELLOW PAINT MARKER (CENTERPOINT)
 - YPF- = YELLOW PINFLAG (GAS)(CENTERPOINT)
 - RPF- = RED PINFLAG (ELECTRIC)(CENTERPOINT)
 - RPM- = RED PAINT MARKER (ELECTRIC)(CENTERPOINT)

- LEGEND**
- PROPERTY LINE
 - WATER LINE
 - WASTEWATER
 - INLET PROTECTION BARRIER WITH STRAW BALES AROUND/ SLT FENCE
 - REINFORCED FILTER FABRIC BARRIER
 - C.O. > CLEAN-OUT
 - C.O. ⊕ INLINE CLEAN OUT
 - PROPOSED WATER METER
 - N.I.C. NOT IN CONTRACT
 - EXIST.-FILLED PROP.=OPEN WASTEWATER MANHOLE
 - EXIST.-FILLED PROP.=OPEN STORM SEWER MANHOLE
 - FIRE HYDRANT (FH)
 - GATE VALVE



HAMMETT INVESTMENTS, L.P.
 RESIDUE OF 7.1764 ACRES
 H.C.C.F. NO. UM4651

RESTRICTED RESERVE 'A'
 DOTSON PARK SEC. 2
 FILM CODE NUMBER 594240
 M.R.H.C.

10' HOUSTON LIGHTING &
 POWER COMPANY EASEMENT
 H.C.C.F. NO. 5089773

RESIDUE OF 1.356 ACRES
 H.C.C.F. NO. V519945

UNRESTRICTED RESERVE 'B'
 METHODIST WILLOWBROOK HOSPITAL
 FILM CODE NUMBER 632272
 M.H.L.C.