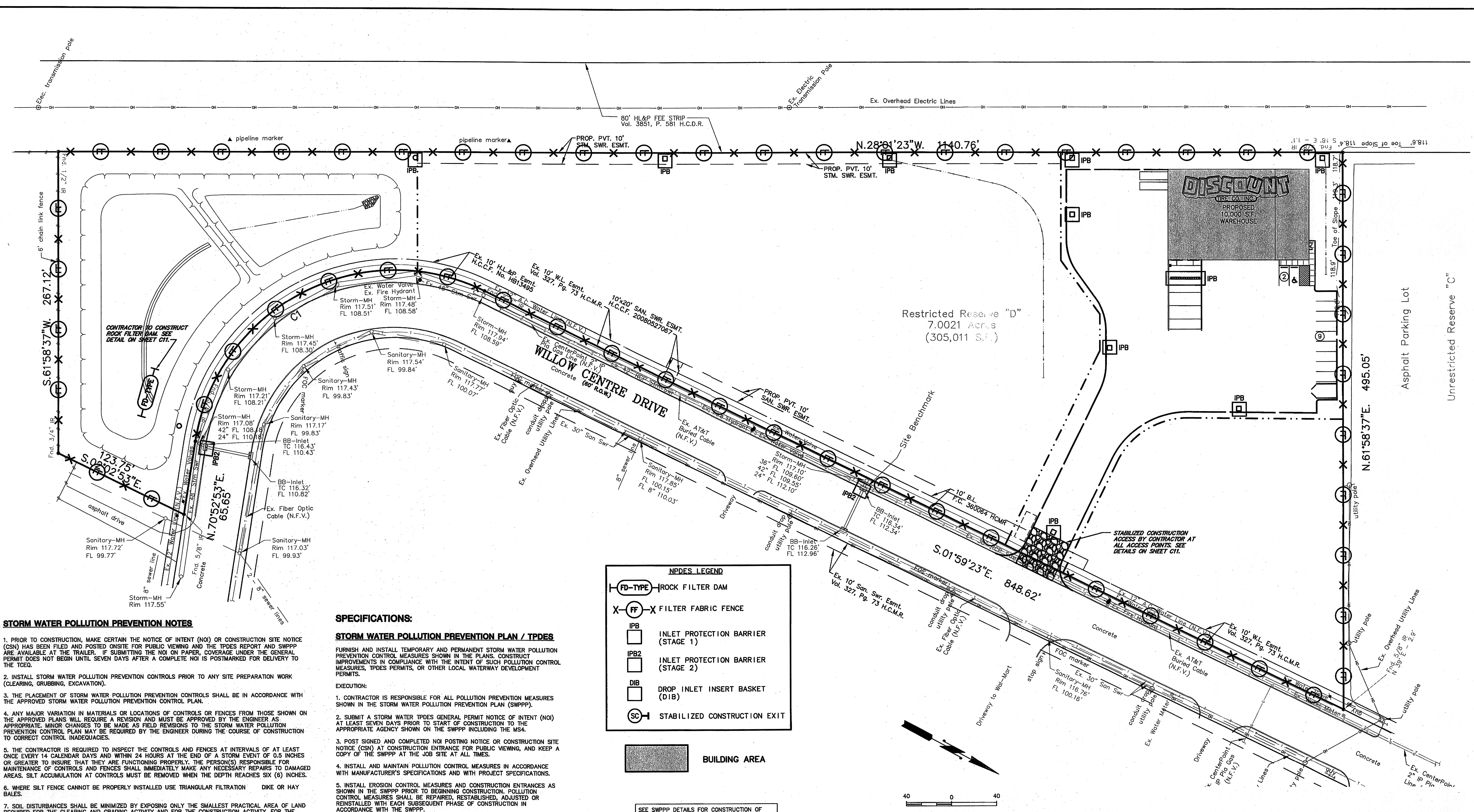
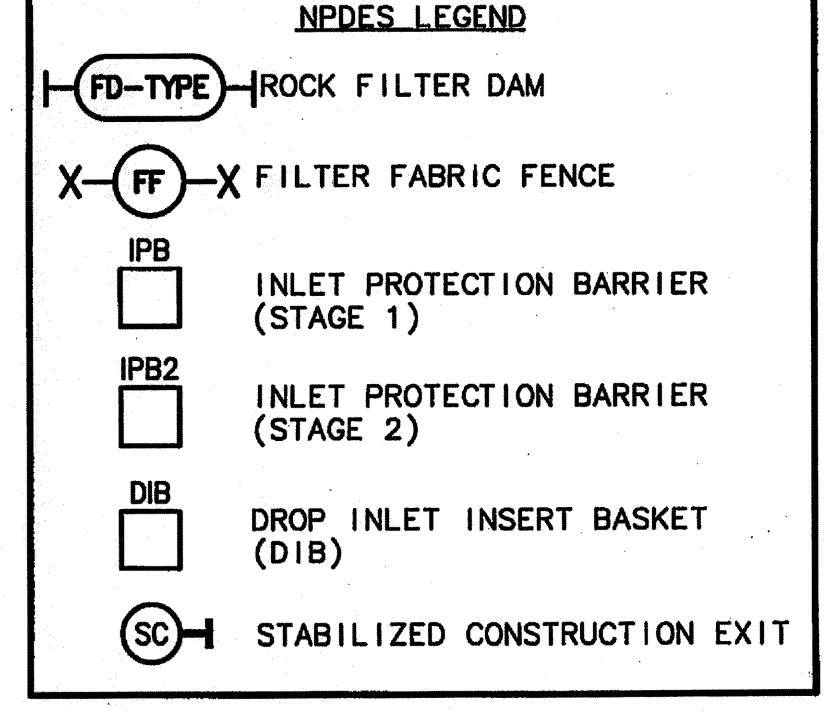


F:\Clients\0280 Discount Tire\Drawings\C10-SWPPP.dwg Nov 05, 2008 - 9:48am Terra Associates Inc., dmb



- ### STORM WATER POLLUTION PREVENTION NOTES
- PRIOR TO CONSTRUCTION, MAKE CERTAIN THE NOTICE OF INTENT (NOI) OR CONSTRUCTION SITE NOTICE (CSN) HAS BEEN FILED AND POSTED ON SITE FOR PUBLIC VIEWING AND THE TPDES REPORT AND SWPPP ARE AVAILABLE AT THE TRAILER. IF SUBMITTING THE NOI ON PAPER, COVERAGE UNDER THE GENERAL PERMIT DOES NOT BEGIN UNTIL SEVEN DAYS AFTER A COMPLETE NOI IS POSTMARKED FOR DELIVERY TO THE TCEQ.
 - INSTALL STORM WATER POLLUTION PREVENTION CONTROLS PRIOR TO ANY SITE PREPARATION WORK (CLEARING, GRUBBING, EXCAVATION).
 - THE PLACEMENT OF STORM WATER POLLUTION PREVENTION CONTROLS SHALL BE IN ACCORDANCE WITH THE APPROVED STORM WATER POLLUTION PREVENTION CONTROL PLAN.
 - ANY MAJOR VARIATION IN MATERIALS OR LOCATIONS OF CONTROLS OR FENCES FROM THOSE SHOWN ON THE APPROVED PLANS WILL REQUIRE A REVISION AND MUST BE APPROVED BY THE ENGINEER. AS APPROPRIATE, MINOR CHANGES TO BE MADE AS FIELD REVISIONS TO THE STORM WATER POLLUTION PREVENTION CONTROL PLAN MAY BE REQUIRED BY THE ENGINEER DURING THE COURSE OF CONSTRUCTION TO CORRECT CONTROL INADEQUACIES.
 - THE CONTRACTOR IS REQUIRED TO INSPECT THE CONTROLS AND FENCES AT INTERVALS OF AT LEAST ONCE EVERY 14 CALENDAR DAYS AND WITHIN 24 HOURS AT THE END OF A STORM EVENT OF 0.5 INCHES OR GREATER TO INSURE THAT THEY ARE FUNCTIONING PROPERLY. THE PERSON(S) RESPONSIBLE FOR MAINTENANCE OF CONTROLS AND FENCES SHALL IMMEDIATELY MAKE ANY NECESSARY REPAIRS TO DAMAGED AREAS. SILT ACCUMULATION AT CONTROLS MUST BE REMOVED WHEN THE DEPTH REACHES SIX (6) INCHES.
 - WHERE SILT FENCE CANNOT BE PROPERLY INSTALLED USE TRIANGULAR FILTRATION DIKE OR HAY BALES.
 - SOIL DISTURBANCES SHALL BE MINIMIZED BY EXPOSING ONLY THE SMALLEST PRACTICAL AREA OF LAND REQUIRED FOR THE CLEARING AND GRADING ACTIVITY AND FOR THE CONSTRUCTION ACTIVITY, FOR THE SHORTEST PRACTICAL PERIOD OF TIME.
 - STABILIZATION MEASURES WILL BE INITIATED AS SOON AS PRACTICABLE IN PORTIONS OF THE SITE WHERE CONSTRUCTION ACTIVITIES HAVE TEMPORARILY OR PERMANENTLY CEASED, AND EXCEPT AS PROVIDED BELOW, WILL BE INITIATED NO MORE THAN FOURTEEN (14) DAYS AFTER THE CONSTRUCTION ACTIVITY IN THAT PORTION OF THE SITE HAS TEMPORARILY OR PERMANENTLY CEASED.
 - WHERE CONSTRUCTION ACTIVITY ON A PORTION OF THE SITE IS TEMPORARILY CEASED, AND EARTH DISTURBING ACTIVITIES WILL BE RESUMED WITHIN TWENTY-ONE (21) DAYS, TEMPORARY STABILIZATION MEASURES DO NOT HAVE TO BE INITIATED ON THAT PORTION OF THE SITE.
 - TRAFFIC LEAVING THE CONSTRUCTION SITE WILL EXIT THROUGH A STABILIZED CONSTRUCTION EXIT AS LOCATED ON THE PLANS. WHEN SOILS HAVE COLLECTED ON THE STABILIZED VEHICULAR EXIT TO AN EXTENT WHICH REDUCES ITS INTENDED EFFECTIVENESS, THE SURFACE WILL BE CLEANED AND REESTABLISHED FOR THE INTENDED PURPOSE.
 - MUD/DIRT INADVERTENTLY TRACKED OFF-SITE AND ONTO PUBLIC STREETS SHALL BE REMOVED IMMEDIATELY.
 - PERMANENT EROSION CONTROL: ALL DISTURBED AREAS SHALL BE RESTORED AS NOTED BELOW.
 - A MINIMUM OF FOUR INCHES OF TOPSOIL SHALL BE PLACED IN ALL DRAINAGE CHANNELS (EXCEPT ROCK) AND BETWEEN THE CURB AND RIGHT-OF-WAY LINE.
 - THE SEEDING FOR PERMANENT EROSION CONTROL SHALL BE APPLIED OVER AREAS DISTURBED BY CONSTRUCTION.
 - THE EPA GENERAL PERMIT REQUIRES THAT A TEMPORARY OR PERMANENT SEDIMENT BASIN BE INSTALLED IN ANY DRAINAGE LOCATION WHERE MORE THAN 10 ACRES IN THE UPSTREAM DRAINAGE ARE DISTURBED AT ONE TIME. THE SEDIMENT BASIN MUST PROVIDE AT LEAST 3,600 CUBIC FEET OF STORAGE FOR EVERY ACRE OF LAND, WHICH IT DRAINS.
 - CONTRACTOR TO COORDINATE CONSTRUCTION ACCESS TO SITE WITH LOCAL AUTHORITIES.
 - ALL DISTURBED AREAS SHALL BE REVEGETATED WITH 4" OF TOP SOIL AND SEEDING PER PERMANENT EROSION CONTROL NOTE 12 ABOVE.

- ### SPECIFICATIONS:
- #### STORM WATER POLLUTION PREVENTION PLAN / TPDES
- FURNISH AND INSTALL TEMPORARY AND PERMANENT STORM WATER POLLUTION PREVENTION CONTROL MEASURES SHOWN IN THE PLANS. CONSTRUCT IMPROVEMENTS IN COMPLIANCE WITH THE INTENT OF SUCH POLLUTION CONTROL MEASURES, TPDES PERMITS, OR OTHER LOCAL WATERWAY DEVELOPMENT PERMITS.
- #### EXECUTION:
- CONTRACTOR IS RESPONSIBLE FOR ALL POLLUTION PREVENTION MEASURES SHOWN IN THE STORM WATER POLLUTION PREVENTION PLAN (SWPPP).
 - SUBMIT A STORM WATER TPDES GENERAL PERMIT NOTICE OF INTENT (NOI) AT LEAST SEVEN DAYS PRIOR TO START OF CONSTRUCTION TO THE APPROPRIATE AGENCY SHOWN ON THE SWPPP INCLUDING THE MS4.
 - POST SIGNED AND COMPLETED NOI POSTING NOTICE OR CONSTRUCTION SITE NOTICE (CSN) AT CONSTRUCTION ENTRANCE FOR PUBLIC VIEWING, AND KEEP A COPY OF THE SWPPP AT THE JOB SITE AT ALL TIMES.
 - INSTALL AND MAINTAIN POLLUTION CONTROL MEASURES IN ACCORDANCE WITH MANUFACTURER'S SPECIFICATIONS AND WITH PROJECT SPECIFICATIONS.
 - INSTALL EROSION CONTROL MEASURES AND CONSTRUCTION ENTRANCES AS SHOWN IN THE SWPPP PRIOR TO BEGINNING CONSTRUCTION. POLLUTION CONTROL MEASURES SHALL BE REPAIRED, REESTABLISHED, ADJUSTED OR REINSTALLED WITH EACH SUBSEQUENT PHASE OF CONSTRUCTION IN ACCORDANCE WITH THE SWPPP.
 - CONTRACTOR IS RESPONSIBLE FOR ANY SEDIMENT THAT ESCAPES THE CONSTRUCTION SITE, AND SHALL REMOVE THE ACCUMULATION OF OFF-SITE SEDIMENT PROMPTLY.
 - MAINTAIN SEDIMENT TRAPS OR SEDIMENTATION BASINS.
 - OFF-SITE MATERIAL STORAGE AREAS USED SOLELY BY THE PROJECT ARE CONSIDERED PART OF THE PROJECT.
 - MAINTAIN RECORDS OF PROJECT MILESTONE DATES AND FIELD CHANGES AS REQUIRED BY THE SWPPP.
 - INSPECT POLLUTION CONTROL MEASURES EVERY 14 DAYS AND WITHIN 24 HOURS AFTER A STORM EVENT GREATER THAN 0.5 INCHES OF RAINFALL. AN INSPECTION REPORT SHALL BE RECORDED AS REQUIRED BY THE SWPPP.
 - DEFICIENCIES NOTED DURING THE INSPECTION WILL BE CORRECTED AND DOCUMENTED WITHIN SEVEN CALENDAR DAYS OR BEFORE THE NEXT ANTICIPATED STORM EVENT.



FLOODPLAIN INFORMATION:

ACCORDING TO THE FEDERAL EMERGENCY MANAGEMENT AGENCY FLOOD INSURANCE RATE MAP NO. 48201C0435 L, LAST REVISED JUNE 18, 2007, THE SUBJECT TRACT LIES WITHIN AN AREA DESIGNATED AS ZONE X (UNSHADED); DEFINED AS AREAS DETERMINED TO BE OUTSIDE THE 0.2% ANNUAL CHANCE FLOODPLAIN, AND ZONE X (SHADED); DEFINED AS AREAS OF 0.2% ANNUAL CHANCE FLOOD; AREAS OF 1% ANNUAL CHANCE FLOOD WITH AVERAGE DEPTHS OF LESS THAN ONE FOOT OR WITH DRAINAGE AREAS LESS THAN ONE SQUARE MILE; AND AREAS PROTECTED BY LEVEES FROM 1% ANNUAL CHANCE FLOOD.

BENCHMARK NOTE:

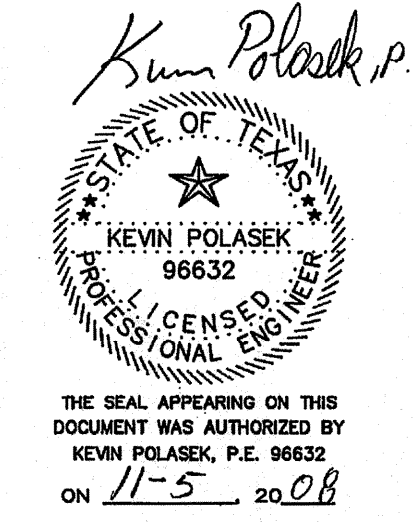
PROJECT BENCHMARK:
FEMA RM 150770 LOCATED ON BRETON RIDGE DRIVE +/- 100' NORTH OF FM 1960. ELEV.=120.92' (NAVD88, 2001 ADJ.)

TBM A:
A "+1" ON TOP OF BB-INLET ON WEST SIDE OF WILLOW CENTRE DR. +/- 875' SOUTH OF FM 1960. ELEV.=116.37' ELEVATIONS BASED ON TSARP RM 150770 (NAVD88, 2001 ADJ.)

LEGAL DESCRIPTION:

A SUBDIVISION CONTAINING 7.0021 ACRES (305,011 S.F.) BEING ALL OF RESTRICTED RESERVE "D", OUT OF WILLOW CENTRE SUBDIVISION RESTRICTED RESERVE "D", SECTION ONE REPLAT, AS RECORDED IN FILM CODE NO. 360084 OF THE H.C.M.R., LOCATED IN THE G.W. CHILDRESS SURVEY, ABSTRACT NO. 217, IN HARRIS COUNTY, TEXAS.

- #### NOTES:
- GREENS BAYOU WATERSHED IS THE ULTIMATE LOCATION WHERE STORM WATER IS DISCHARGED. (HCFCF UNIT P100-00-00).
 - AFTER MAJOR GRADING IS COMPLETED, THE PROPOSED SITE DRAINAGE WILL BE GRADED TO TIE INTO THE EXISTING STORM SEWER SYSTEM IN WILLOW CENTRE DRIVE THAT ULTIMATELY TIES INTO GREENS BAYOU WATERSHED.
 - CONTRACTOR MUST ESTABLISH AN APPROPRIATE "CONCRETE TRUCK WASHOUT AREA". SEE DETAIL SHEET C11.



REV. NO.	DESCRIPTION	DATE	APP.

DISCOUNT TIRE (DISTRIBUTION) HOUSTON - WILLOWBROOK

STORM WATER POLLUTION PREVENTION PLAN

TERRA ASSOCIATES, INC. CONSULTING ENGINEERS
3000 WILCREST - SUITE 200
HOUSTON, TEXAS ZIP 77042
PHONE: 713-993-0333
FAX: 713-993-0743

DRAWN BY: DAB	SCALE: 1" = 40'	CONTRACT: 1
CHECKED BY: KBP	DATE: NOVEMBER 2008	PROJECT No. 0280-0706
FILE NAME: C10-SWPPP.DWG	PLOT SCALE: 1:1	SHEET C10 OF 15