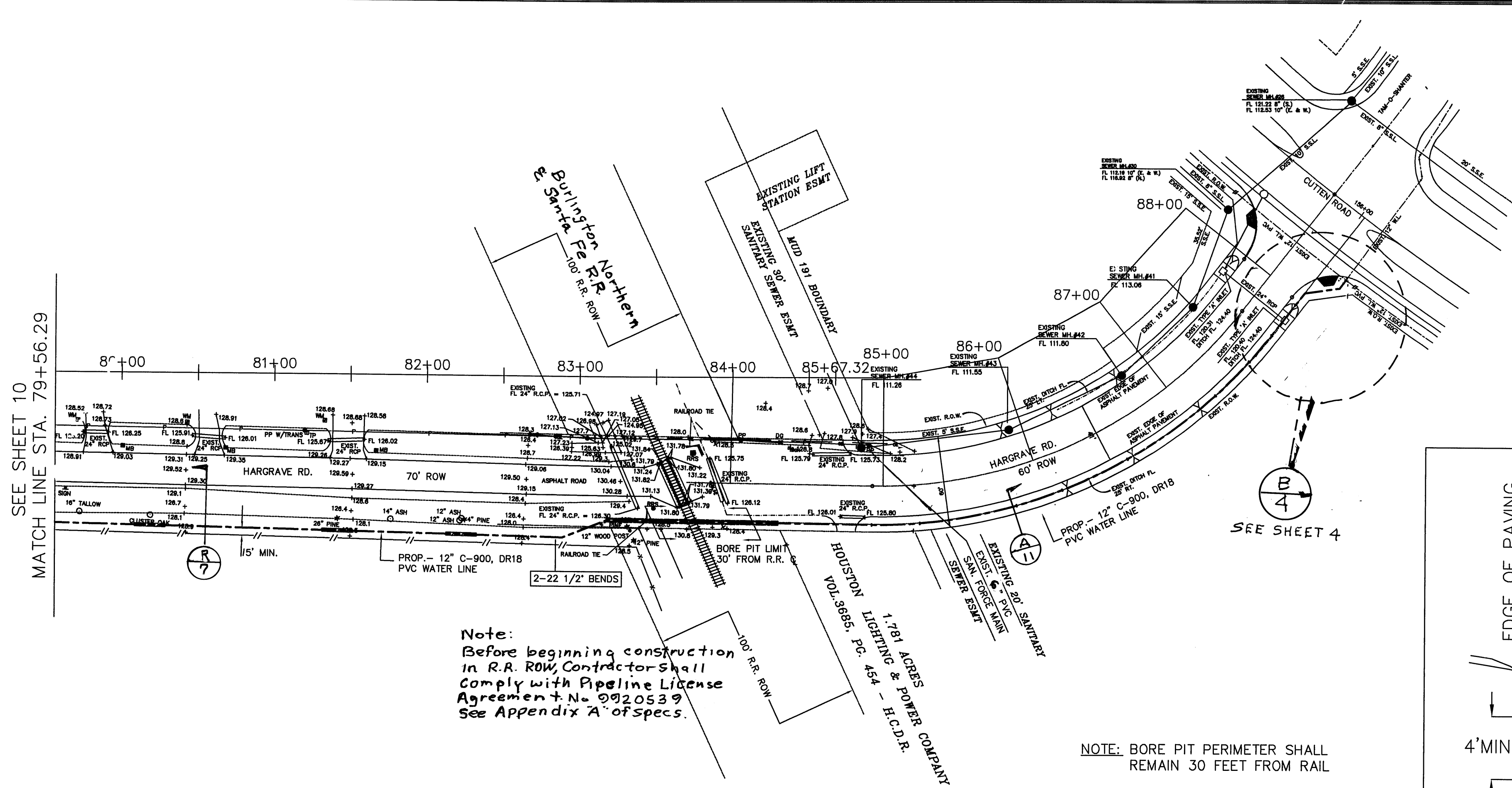


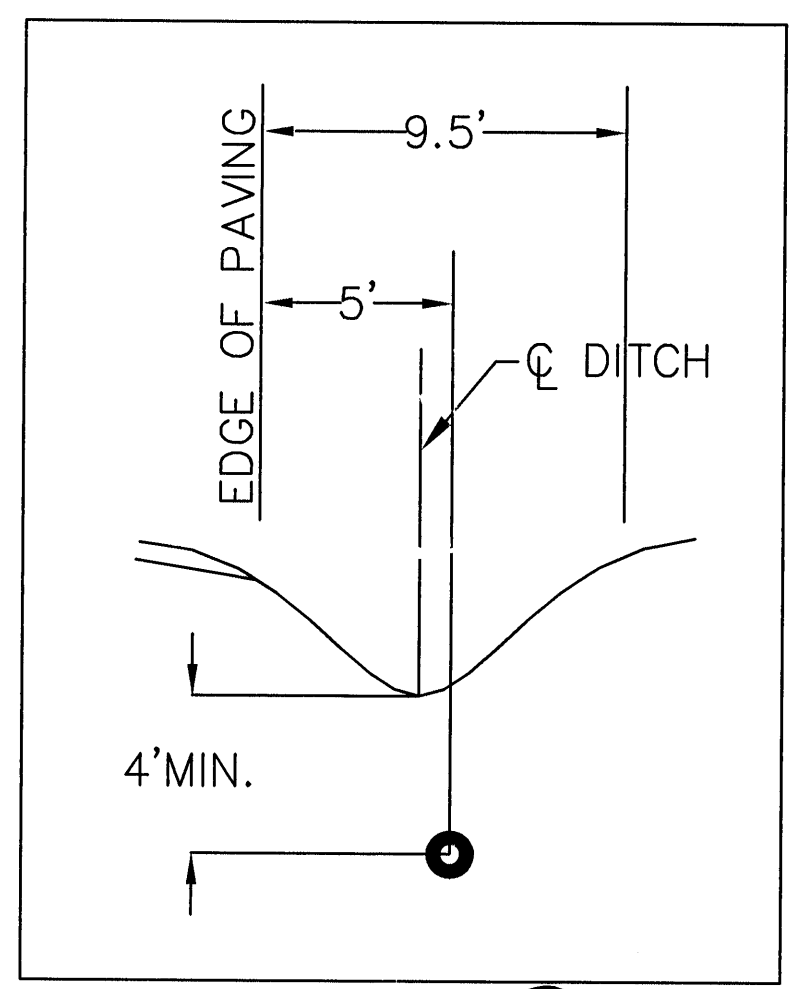
- LEGEND**  
 C CONCRETE  
 CLR CENTERLINE OF ROAD  
 DG DOWN GUY  
 G GUTTER  
 GB GRADE BREAK  
 GP GATE POST  
 LP LIGHT POLE  
 NG NATURAL GROUND  
 PP POWER POLE  
 TC TOP OF CURB  
 SN SIGN  
 WV WATER VALVE

SEE SHEET 10  
 MATCH LINE STA. 79+56.29



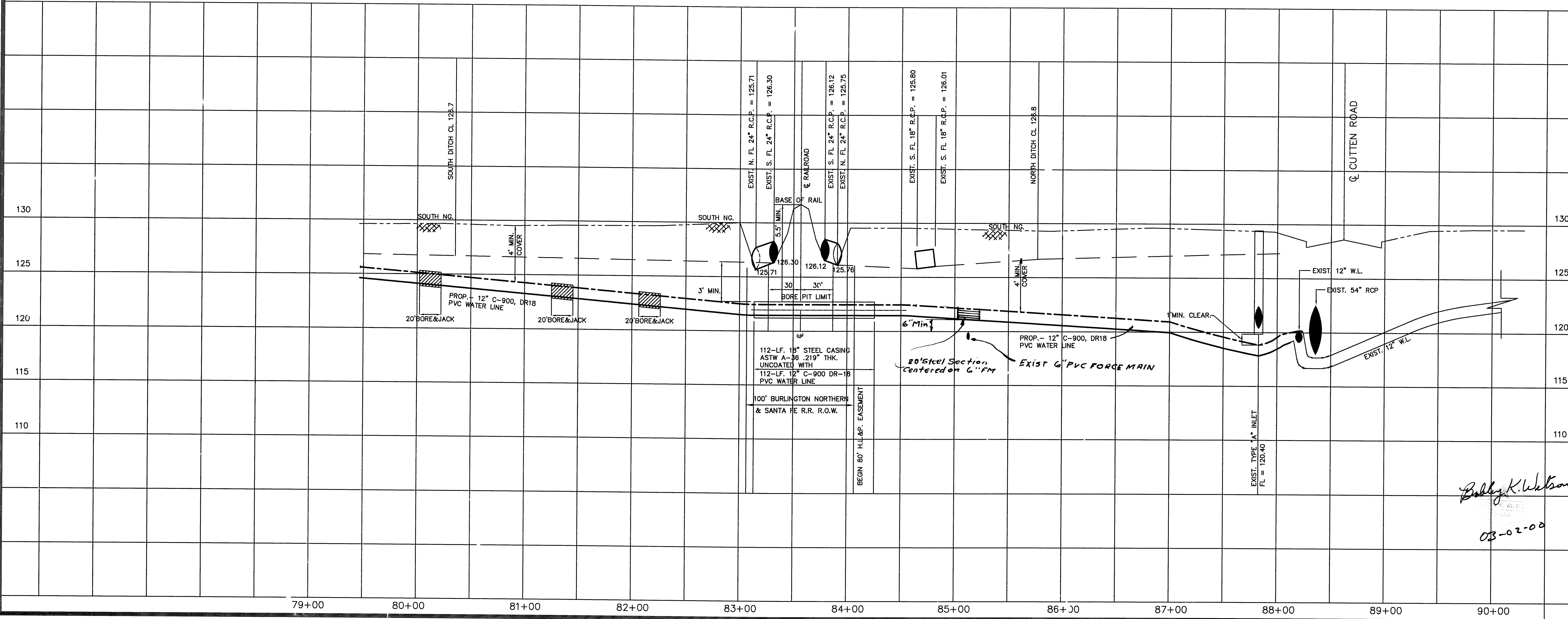
**Note:**  
 Before beginning construction in R.R. ROW, contractor shall comply with Pipeline License Agreement # No. 0020539 See Appendix 'A' of Specs.

**NOTE:** BORE PIT PERIMETER SHALL REMAIN 30 FEET FROM RAIL



- TREE PRESERVATION NOTES:**
- NO OPEN CUT WITHIN 10' OF A TREE.
  - BORE AND JACK FORCE MAIN FROM DRIP LINE TO DRIP LINE OR A MAXIMUM OF 20' AT EACH TREE UNLESS OTHERWISE SHOWN.
  - OFFSET BORE 5' MINIMUM FROM ANY PINE TREE TRUNK TO AVOID BREAKING TAPROOT.

HARGRAVE ROAD (SOUTH PROFILE)



BENCH MARK

BENCH MARK: NATIONAL GEODETIC SURVEY MARKER  
 Y1216, 1973 ADJ., ELEV. = 125.994  
 Y1216, 1978 ADJ., ELEV. = 125.406  
 Y1216, 1988 ADJ., ELEV. = 123.94 (THIS ADJUSTMENT WAS USED FOR CUTTEN ROAD)  
 ELEVATIONS SHOWN HEREON ARE BASED ON 1973 ADJUSTMENT

TBM #1: SET RAILROAD SPIKE ON SOUTH SIDE OF 14" TALLOW APPROXIMATELY 71 FEET NORTH OF THE END OF CENTERFIELD DRIVE ELEVATION = 130.60  
 TBM #2: SET RAILROAD SPIKE ON SOUTH SIDE OF POWER POLE WITH TRANSFORMER ON WEST SIDE OF PRIVATE ROAD AND 200 FEET NORTH OF PRIVATE ROAD ELEVATION = 130.62  
 TBM #3: SET RAILROAD SPIKE ON EAST SIDE OF POWER POLE ON WEST SIDE OF HARGRAVE ROAD AND NORTH OF THE INTERSECTION OF DOTSON ROAD & HARGRAVE ROAD ELEVATION = 128.04  
 TBM #4: RAILROAD SPIKE ON EAST SIDE OF POWER POLE #13629 ON THE WEST SIDE OF HARGRAVE ROAD APPROXIMATELY 30 FEET NORTH OF 18 INCH R.C.P. AT GRAVEL DRIVE FROM 13627 HARGRAVE ROAD ELEVATION = 130.56

APPROVED: \_\_\_\_\_  
 for Assistant County Engineer  
 Date \_\_\_\_\_

Approval Implied for paving and drainage facilities within Harris County R.O.W. and/or jurisdiction. All other improvements in H.C.R.O.W. and/or jurisdiction are approved as to location only.  
 The above authorization is valid for one (1) year only.

Rev.	Date	Description	App.

PRIVATE UTILITY LINES SHOWN

*John M. Goff* 3/1/2000  
 RELIANT ENERGIES, INC./ENERGY

*Nide Balin* 3/7/00  
 SOUTHWESTERN BELL TELEPHONE CO.  
 Valid for One Year Only

*John M. Goff* 3/1/2000  
 RELIANT ENERGIES, INC./H.V.S.P. CO.  
 Approval Only for Crossing Underground  
 Ductlines Unless Noted. Valid at Time of Review Only.

**CITY OF HOUSTON**  
 DEPARTMENT OF PUBLIC WORKS AND ENGINEERING

REVIEWED BY	
PRIVATELY FUNDED PUBLIC WORKS	CITY FUNDED PUBLIC WORKS
<i>Water Subdiv 3-7-00</i> WATER	
<i>Water</i> WASTEWATER	PROJECT MANAGER
<i>Storm</i> STORM WATER	CONSTRUCTION
	CHIEF ENGINEER
OTHER APPROVAL	
TRAFFIC AND TRANSPORTATION	SPONSOR DEPARTMENT
CITY ENGINEER	DATE
<i>Michael A. ...</i>	3-8-2000
DIRECTOR OF PUBLIC WORKS AND ENGINEERING	DATE
SUBMITTED: _____	DESIGNED BY: B K WILSON
SCALE: H: 1"=50' V: 1"=5'	DRAWN BY: BILL DORRIS
DATE: MARCH 2000	SHEET NO. 11 OF 14 SHEETS
SURVEY BY: _____	CITY DWG. NO. HARDTC6.DWG
F B NO: 462U	

HARRIS COUNTY MUD 191  
 WATER LINE ALONG  
 HARGRAVE ROAD  
 (SOUTH PROFILE)  
 STA. 79+56.29 TO 88+27.53

**PCI** PROVIDENT CONSULTING, INC.  
 1200 WEST 11TH ST.  
 HOUSTON, TEXAS 77008  
 (713)802-1019