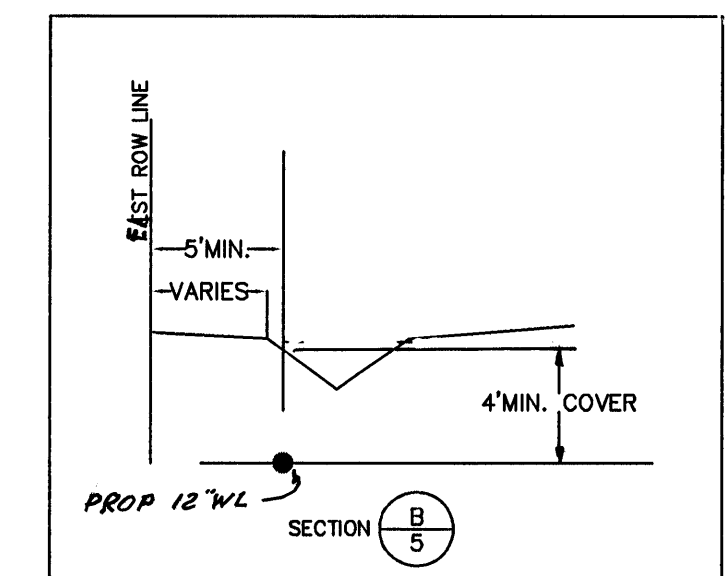
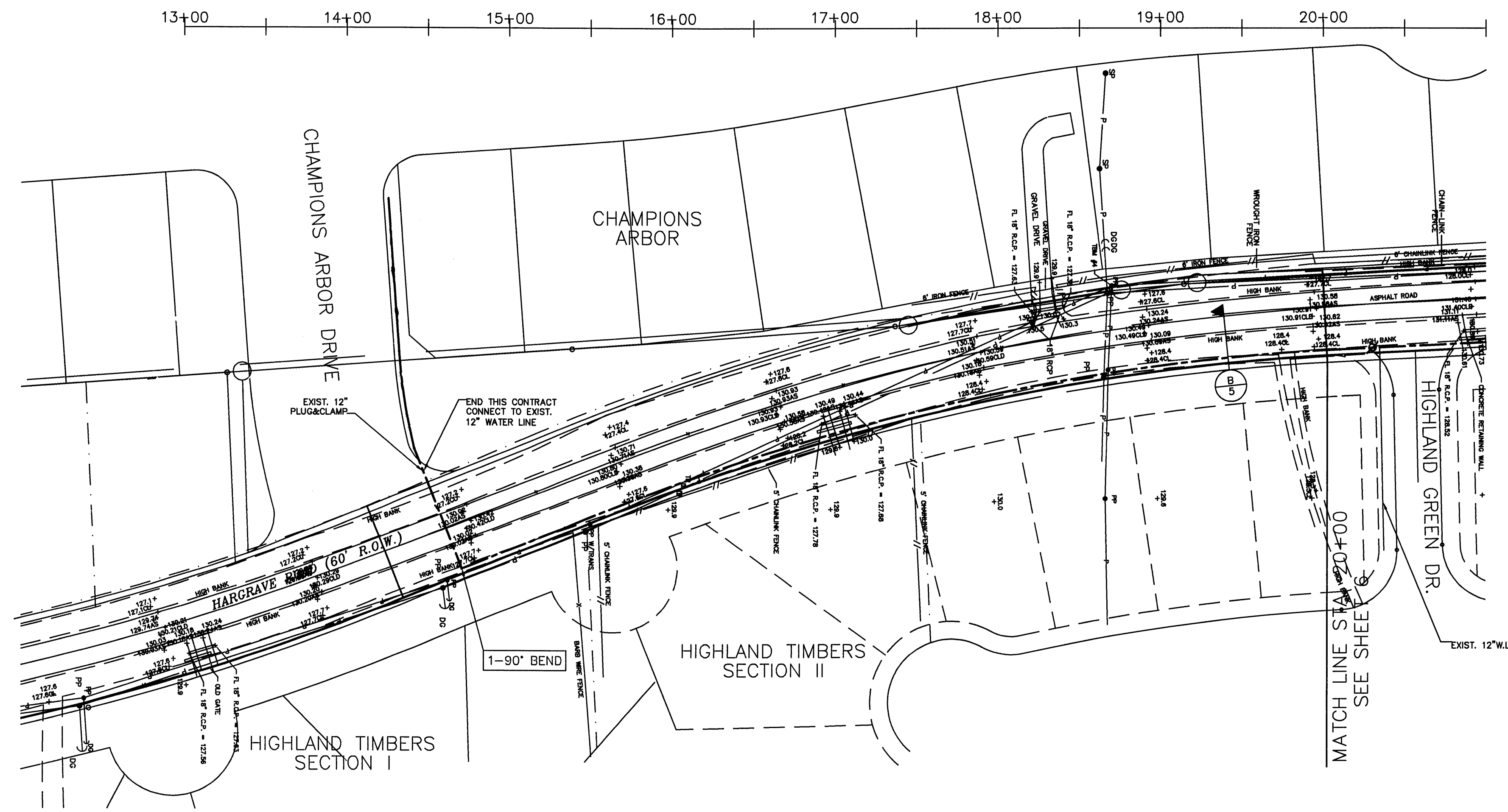


- LEGEND
 C CONCRETE
 CLR CENTERLINE OF ROAD
 DG DOWN GUY
 G GUTTER
 GB GRADE BREAK
 GP GATE POST
 LP LIGHT POLE
 NG NATURAL GROUND
 PP POWER POLE
 TC TOP OF CURB
 SN SIGN
 WV WATER VALVE



BENCH MARK
 BENCH MARK: NATIONAL GEODETIC SURVEY MARKER
 Y1216, 1973 ADJ. ELEV. = 125.994
 Y1216, 1978 ADJ. ELEV. = 125.406
 Y1216, 1988 ADJ. ELEV. = 123.94 (THIS ADJUSTMENT WAS USED FOR CUTTEN ROAD)
 ELEVATIONS SHOWN HEREON ARE BASED ON 1973 ADJUSTMENT
 TBM #1: SET RAILROAD SPIKE ON SOUTH SIDE OF 14\"/>

APPROVED: _____
 for Assistant County Engineer
 Date _____
 Approval implied for paving and drainage facilities within Harris County R.O.W. and/or Jurisdiction. All other improvements in H.C.R.O.W. and/or Jurisdiction are approved as to location only. The above authorization is valid for one (1) year only.

Rev.	Date	Description	App.

PRIVATE UTILITY LINES SHOWN
 Reliant 3/1/2000
 Reliant 3/7/00
 Southwestern Bell Telephone Co. Valid for One Year Only
 Reliant 3/1/2000
 Reliant 3/1/2000
 Approval Only for Crossing Underground Ductlines Unless Noted. Valid at Time of Review Only.

CITY OF HOUSTON
 DEPARTMENT OF PUBLIC WORKS AND ENGINEERING
 REVIEWED BY:
 PRIVATELY FUNDED PUBLIC WORKS
 CITY FUNDED PUBLIC WORKS
 PROJECT MANAGER
 CONSTRUCTION
 CHIEF ENGINEER

OTHER APPROVAL
 TRAFFIC AND TRANSPORTATION
 SPONSOR DEPARTMENT
 CITY ENGINEER
 DATE
 DIRECTOR OF PUBLIC WORKS AND ENGINEERING
 DATE
 SUBMITTED: H: 1"=50' V: 1"=5'
 SCALE: MARCH 2000
 SURVEY BY: F B NO: 462U
 DESIGNED BY: B K WILSON
 DRAWN BY: BILL DORRIS
 SHEET NO. 5 OF 14 SHEETS
 CITY DWG. NO. HARDITCO.DWG

HARRIS COUNTY MUD 191
 WATER LINE ALONG
 HARGRAVE ROAD
 (EAST PROFILE)
 STA. 14+00 TO STA. 20+00

PCI PROVIDENT CONSULTING, INC.
 1200 WEST 11TH ST.
 HOUSTON, TEXAS 77008
 (713)802-1019

Station	13+00	14+00	15+00	16+00	17+00	18+00	19+00	20+00	21+00	
130		EXIST. EAST P.W.T. 130.09 EXIST. EAST DITCH FL 128.4	EXIST. EAST P.W.T. 130.62 EXIST. EAST DITCH FL 128.4	EXIST. EAST P.W.T. 131.11 EXIST. EAST DITCH FL 128.52	EXIST. EAST P.W.T. 131.15 EXIST. EAST DITCH FL 128.51	EXIST. EAST P.W.T. 131.21 EXIST. EAST DITCH FL 128.80	EXIST. EAST P.W.T. 131.25 EXIST. EAST DITCH FL 128.80	EXIST. EAST P.W.T. 131.95 EXIST. EAST DITCH FL 127.57 EXIST. EAST P.W.T. 130.92 EXIST. EAST DITCH FL 127.63 EXIST. EAST P.W.T. 130.91 EXIST. EAST DITCH FL 127.38	EXIST. EAST P.W.T. 130.02 EXIST. EAST DITCH FL 128.30	EXIST. EAST P.W.T. 130.05 EXIST. EAST DITCH FL 128.31
125		EXIST. EAST N.G.	EXIST. EAST N.G.	FL 128.52 EXIST. FL 128.51 18" RCP	1/4" MIN.	PROP. 12" W.L. PVC C-900 DR18	FL 127.63 EXIST. FL 127.38 18" RCP	4" MIN.	EXIST. EAST N.G.	EXIST. EAST N.G.
120										
115										
110										
105										

Bobby K. Wilson
 03-02-00