

**LEGEND**

- PROPOSED WATER LINE
- PROPOSED SANITARY SEWER LINE
- EX. OVERHEAD POWER
- EX. UNDERGROUND TELEPHONE LINE
- EX. STORM SEWER LINE
- EX. WATER LINE
- EX. SANITARY SEWER LINE
- PROPOSED MH
- EX. MH
- PROP BORE & JACK

**GENERAL NOTES**

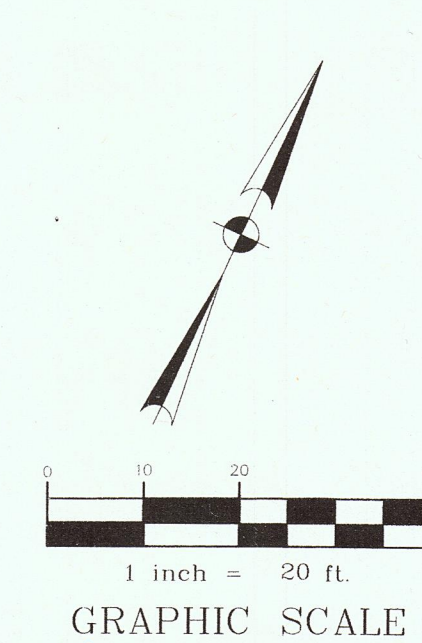
1. REFERENCE SANITARY SEWER AND WATER LINE NOTES SHEET 2 FOR PIPE MATERIAL REQUIREMENTS.
2. ALL DRIVEWAYS, SIDEWALKS, STREET LIGHTS, BUSHES, SHRUBBERY AND LANDSCAPING DAMAGED ON PUBLIC OR PRIVATE PROPERTY SHALL BE RESTORED TO THEIR ORIGINAL CONDITION OR BETTER. ALL TREES, LANDSCAPING, IRRIGATION, SPRINKLER HEADS, AND PLANTS SHALL BE PROTECTED DURING CONSTRUCTION.
3. CONTRACTOR TO VISUALLY INSPECT LOCATION OF EXISTING 12" WL PRIOR TO ORDERING MATERIALS. CONTRACTOR TO NOTIFY ENGINEER IMMEDIATELY IF PROPOSED 10" SANITARY SEWER DOES NOT HAVE MINIMUM 2' OF VERTICAL CLEARANCE.
4. SANITARY SEWER-USE 10" GREEN P.V.C. C-900 DR-18 CL.235 FOR BORE & JACK.
5. CONTRACTOR TO SECURE ALL POWER POLES, GUY WIRES, ETC DURING CONSTRUCTION (NO SEPARATE PAY)

MULTIPLE EXISTING PUBLIC AND PRIVATE UTILITY LINES EXIST ON THIS SITE. THE UTILITY LINES SHOWN ON THESE DRAWINGS REFLECT INFORMATION OBTAINED FROM RECORD DRAWINGS AND MAY NOT INCLUDE ALL EXISTING UTILITIES. CONTRACTOR IS TO USE EXTREME CAUTION DURING ALL CONSTRUCTION ACTIVITIES AND IS SOLELY RESPONSIBLE FOR DAMAGE TO EXISTING FACILITIES.

**MMG Contractors, LLC**  
**AS-BUILT**  
Date: 12/24/17

1. CONSTRUCTION OF FACILITIES AND/OR PAVING WORK WITHIN PUBLIC RIGHT-OF-WAY NOTIFICATIONS (PERMIT) ISSUED BY HARRIS COUNTY PUBLIC INFRASTRUCTURE DEPARTMENT - PERMITS OFFICE - IS REQUIRED FOR PROPOSED WORK WITHIN HARRIS COUNTY RIGHT-OF-WAY. THE PROJECT MUST BE APPROVED PRIOR TO OBTAINING THE REQUIRED NOTIFICATION. BE ADVISED THAT A NOTIFICATION MUST BE OBTAINED SEPARATELY FROM SITE DEVELOPMENT PERMIT PACKAGE. FOR ADDITIONAL INFORMATION, PLEASE VISIT [HTTP://HCPID.ORG/PERMITS/PR\\_NOTIFICATION\\_OF\\_CONSTRUCTION.HTML](http://hcpid.org/permits/pr_notification_of_construction.html) OR CONTACT PUBLIC REVIEW INSPECTIONS DEPARTMENT @ (713)-274-3931 OR PUBLIC.REVIEW@HCPID.ORG

CALL BEFORE YOU DIG  
TEXAS ONE CALL PARTICIPANTS REQUEST  
72 HOURS NOTICE BEFORE YOU DIG, DRILL OR BLAST - STOP CALL  
TEXAS ONE CALL SYSTEM  
1-800-545-6005  
IN HOUSTON  
(713)-223-4567

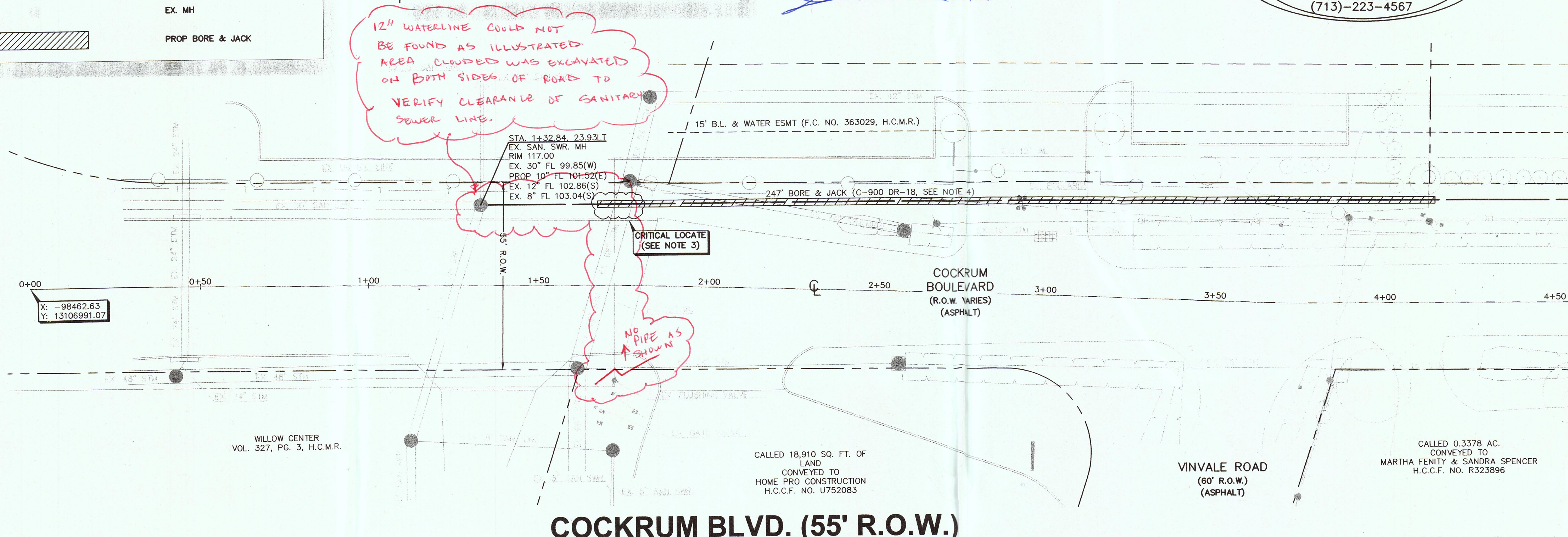


BENCHMARK:  
ELEVATIONS SHOWN HEREON ARE BASED ON TSARP FLOORPLAIN RM NO. 150770 (TEXAS STATE PLANE COORDINATE SYSTEM, SOUTH CENTRAL ZONE NAD 83), HGCS STAINLESS STEEL ROD STAMPED "HGCS 11 1986" AT THE INTERSECTION OF FM 1960 AND BRETON RIDGE STREET LOCATED IN THE GROUND, NORTH OF INTERSECTION, WEST OF JARED JEWELER PARKING LOT.  
ELEVATION = 120.92' (NAV 1988M 2001 ADJUSTED)

TEMPORARY BENCHMARK "A":  
CUT "X" ON NORTHERLY BOLT ON TOP FLANGE OF FIRE HYDRANT AT THE NORTHWEST INTERSECTION OF FM 1960 AND CUTTEN ROAD. (NOT SHOWN HEREON)  
ELEVATION = 124.05'

TEMPORARY BENCHMARK "B":  
CUT "BOX" IN LIGHT STANDARD LOCATED APPROX. 100 FEET WEST OF CUTTEN ROAD AND MOST SOUTHERN ENTRANCE OF WALMART, SOUTH SIDE OF ENTRANCE. (SHOWN HEREON)  
ELEVATION = 122.42'

TEMPORARY BENCHMARK "C":  
BOX CUT OR STORM INLET ALONG THE SOUTH SIDE OF COCKRUM BLVD., APPROX. 100 FEET WEST OF VINVALE ROAD. (SHOWN HEREON)  
ELEVATION = 117.04'



12" WATERLINE COULD NOT BE FOUND AS ILLUSTRATED AREA CLOUDED WAS EXCAVATED ON BOTH SIDES OF ROAD TO VERIFY CLEARANCE OF SANITARY SEWER LINE.

CRITICAL LOCATE (SEE NOTE 3)  
NO PIPE AS SHOWN

MATCH LINE STA. 4+50.00  
(SEE SHEET 5 OF 15)

*Chad Walker* 1/2/2018  
HARRIS COUNTY MUNICIPAL UTILITY DISTRICT NO. 191 ENGINEER DATE

APPROVAL DOES NOT INCLUDE A DETERMINATION THAT THE ONSITE PRIVATE UTILITIES WERE DESIGNED PROPERLY. WE REVIEWED THE PLANS SOLELY FOR GENERAL COMPLIANCE WITH THE DISTRICT'S RATE ORDER.

TO ADVANCE FOR LINE TO BE TURNED OFF OR MOVED, CALL CENTERPOINT AT (713) 207-2222

**NOTICE:**  
For your safety, you are required by Texas Law to call 811 at least 48 hours before you dig so that underground lines can be marked. This signature does not fulfill your obligation to call 811.

VERIFICATION OF PRIVATE UTILITY LINES  
*Almora* DATE: 12/13/17  
CenterPoint Energy natural gas utilities shown. (Gas service lines are not shown). This signature not to be used for conflict verification. Signature valid for 6 months.

*Almora* DATE: 12/13/17  
CenterPoint Energy/UNDERGROUND Electrical Facilities Verification ONLY. (This signature verifies existing underground facilities-not to be used for conflict verification.) Signature valid for six months.

*ctm.ca* DATE: 12-13-17  
APPROVED FOR AT&T TEXAS / SIBT UNDERGROUND CONDUIT FACILITIES ONLY  
SIGNATURE VALID FOR ONE YEAR.

APP.	REVISIONS	DATE
1	VOID SHEETS 1-15 ADD SHEETS 1A-15 ADD SHEETS 16-18 PER MUD	12/14/17

**ALJLindsey**  
Civil Engineers  
5629 FM 1960 W., Suite 314  
Houston, TX 77069  
281.301.5955  
FRN F-11526

**Patrick L. Carrigan**  
REGISTERED PROFESSIONAL ENGINEER  
95617  
12 DECEMBER 2017

**CUTTEN PARK UTILITIES**  
**COCKRUM BLVD. UTILITY PLAN & PROFILE (1 OF 4)**

NOTE: CITY SIGNATURES VALID FOR ONE YEAR ONLY AFTER DATE OF SIGNATURES

**CITY OF HOUSTON**  
DEPARTMENT OF PUBLIC WORKS AND ENGINEERING

WATER	TRAFFIC & TRANSPORTATION
SEWER	STORM WATER QUALITY
STORM	FACILITIES
STREET & BRIDGE	
FILE NO:	FOR CITY OF HOUSTON USE ONLY
DRAWING SCALE	
HORIZ : 1"=20'	
VERT : 1"=2'	
SHEET NO. 4 OF 17	



MATCH LINE STA. 4+50.00  
(SEE SHEET 5 OF 15)