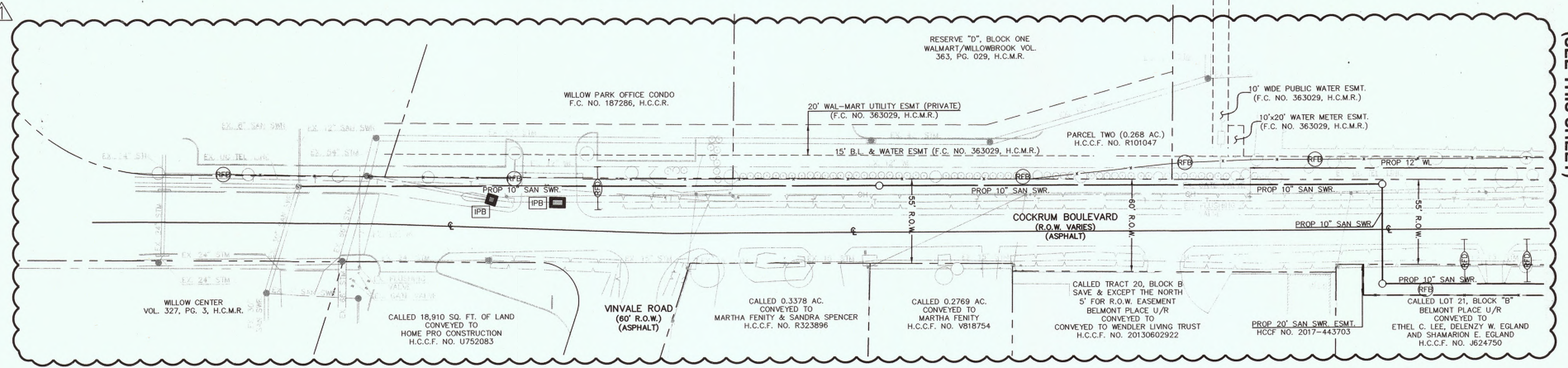


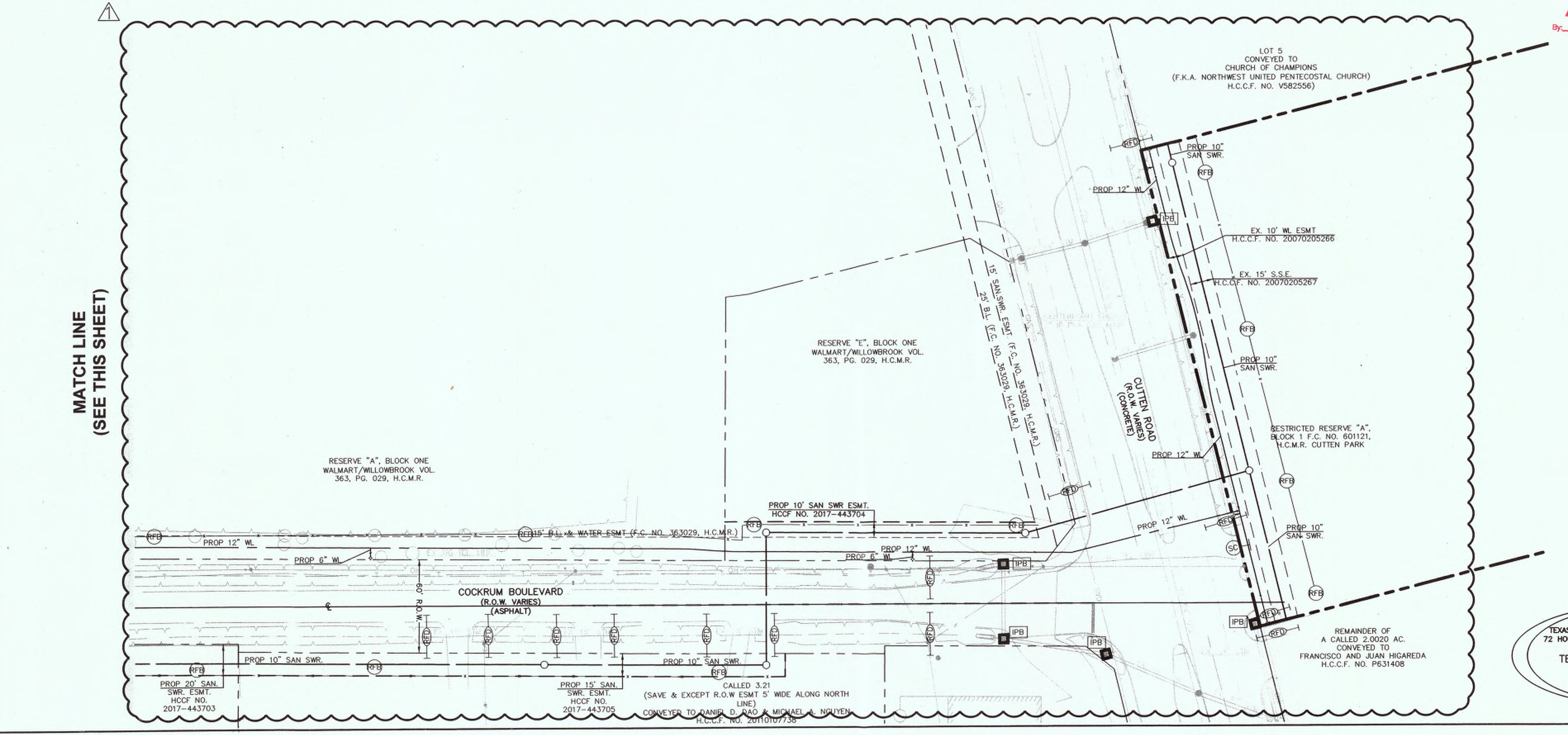
LEGEND

	INLET PROTECTION BARRIER (SEE DETAIL SHEET 14)
	REINFORCED FILTER FABRIC BARRIER (SEE DETAIL SHEET 14)
	ROCK FILTER DAM (SEE DETAIL SHEET 14)
	STABILIZED CONSTRUCTION ACCESS (SEE DETAIL SHEET 14)

- GENERAL NOTES**
- CONTRACTOR TO MAINTAIN A CLEAN PROJECT SITE AND ENSURE THAT ALL DEBRIS IS PLACED IN DESIGNATED AREA PER PLANS. ALL SPOIL MATERIAL GENERATED FROM CONSTRUCTION ACTIVITY TO BE HAULED OFFSITE AND DISPOSED IN ACCORDANCE WITH LOCAL LAWS, RULES, AND REGULATIONS.
 - STABILIZED CONSTRUCTION EXIT LENGTH SHALL BE NOT LESS THAN 50- FEET.
 - THICKNESS SHALL BE NOT LESS THAN 8-INCHES.
 - WIDTH SHALL BE NOT LESS THAN FULL WIDTH OF ALL POINTS OF INGRESS AND EGRESS.
 - STABILIZATION FOR OTHER AREAS SHALL HAVE THE SAME AGGREGATE THICKNESS AND WIDTH REQUIREMENTS AS THE STABILIZED CONSTRUCTION EXIT, UNLESS OTHERWISE SHOWN ON THE CONSTRUCTION DRAWINGS.
 - STABILIZED AREA MAY BE WIDENED OR LENGTHENED TO ACCOMMODATE A TRUCK WASHING AREA. AN OUTLET SEDIMENT TRAP MUST BE PROVIDED FOR THE TRUCK WASHING AREA.

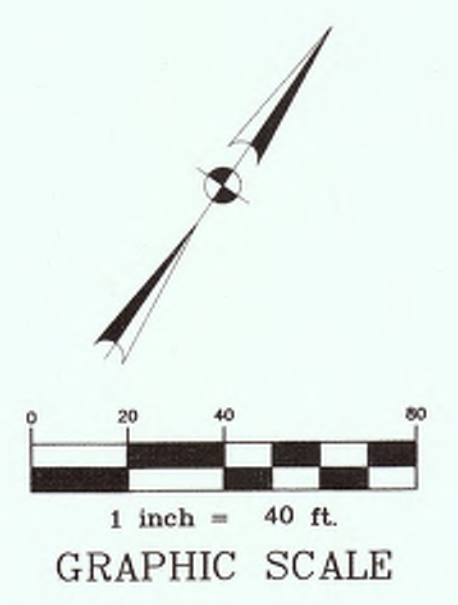


MATCH LINE
(SEE THIS SHEET)



MATCH LINE
(SEE THIS SHEET)

NO CHANGE
MMG Contractors, LLC
AS-BUILT
By: [Signature] Date: 12/14/17



CALL BEFORE YOU DIG
TEXAS ONE CALL PARTICIPANTS REQUEST
72 HOURS NOTICE BEFORE YOU DIG, DRILL
OR BLAST - STOP CALL
TEXAS ONE CALL SYSTEM
1-800-545-6005
IN HOUSTON
(713)-223-4567

BENCHMARK:
ELEVATIONS SHOWN HEREON ARE BASED ON TSARP FLOORPLAN RM NO. 150770 (TEXAS STATE PLANE COORDINATE SYSTEM, SOUTH CENTRAL ZONE NAD 83), HGCSO STAINLESS STEEL ROD STAMPED "HGCSO 11 1986" AT THE INTERSECTION OF FM 1960 AND BRETON RIDGE STREET LOCATED IN THE GROUND, NORTH OF INTERSECTION, WEST OF JARED JEWELER PARKING LOT. ELEVATION = 120.92' (NAVD 1988M 2001 ADJUSTED)

TEMPORARY BENCHMARK "A":
CUT "X" ON NORTHERLY BOLT ON TOP FLANGE OF FIRE HYDRANT AT THE NORTHWEST INTERSECTION OF FM 1960 AND CUTTEN ROAD. (NOT SHOWN HEREON) ELEVATION = 124.05'

TEMPORARY BENCHMARK "B":
CUT "BOX" IN LIGHT STANDARD LOCATED APPROX. 100 FEET WEST OF CUTTEN ROAD AND MOST SOUTHERN ENTRANCE OF WALMART, SOUTH SIDE OF ENTRANCE. (SHOWN HEREON) ELEVATION = 122.42'

TEMPORARY BENCHMARK "C":
BOX CUT ON STORM INLET ALONG THE SOUTH SIDE OF COCKRUM BLVD., APPROX. 100 FEET WEST OF VINVALE ROAD. (SHOWN HEREON) ELEVATION = 117.04'

Chad Walker 1/12/2018
HARRIS COUNTY MUNICIPAL UTILITY DISTRICT NO. 191 ENGINEER DATE APPROVAL CAN BE REVOKED, SUSPENDED, OR MODIFIED AT ANY TIME, BUT, IN ANY EVENT, IT EXPIRES AUTOMATICALLY AFTER ONE YEAR.

NOTICE:
For your safety, you are required by Texas Law to call 811 at least 48 hours before you dig so that underground lines can be marked. This signature does not fulfill your obligation to call 811.

VERIFICATION OF PRIVATE UTILITY LINES

<i>[Signature]</i>	DATE: 12/13/17
<i>[Signature]</i>	DATE: 12/13/17
<i>[Signature]</i>	DATE: 12-13-17

APPROVED FOR ABOVE TEXAS / SWIFT UNDERGROUND CONDUIT FACILITIES ONLY
SIGNATURE VALID FOR ONE YEAR.

APP.	REVISIONS	DATE
1	VOID SHEETS 1-15 ADD SHEETS 1A-15A ADD SHEETS 16-18 PER MUD	12/14/17
2		
3		

ALJLindsey
Civil Engineers
5629 FM 1960 W., Suite 314
Houston, TX 77069
281.301.5955
FRN F-11526

12 DECEMBER 2017

CUTTEN PARK UTILITIES

EROSION CONTROL PLAN

NOTE: CITY SIGNATURES VALID FOR ONE YEAR ONLY AFTER DATE OF SIGNATURES

CITY OF HOUSTON
DEPARTMENT OF PUBLIC WORKS AND ENGINEERING

WATER	TRAFFIC & TRANSPORTATION
WASTEWATER	STORM WATER QUALITY
STORM	FACILITIES
STREET & BRIDGE	
FILE NO:	FOR CITY OF HOUSTON USE ONLY
DRAWING SCALE	
HORIZ :	
VERT :	
SHEET NO. 9A OF 17	

