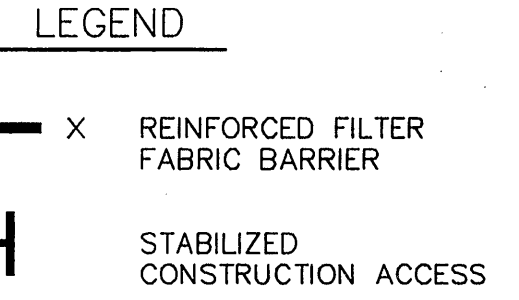
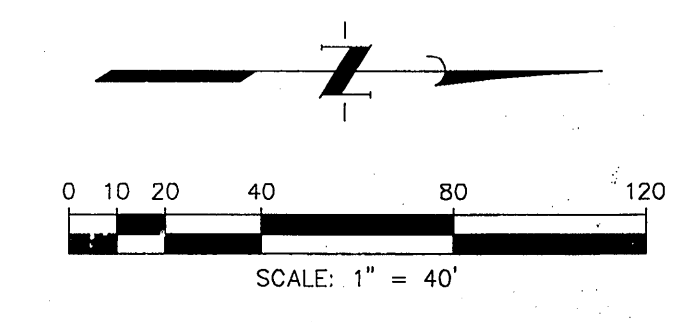


**BENCH MARK**  
Elevations shown hereon are based on Tropical Storm Allison Recovery Project Harris County Floodplain Reference Mark No. 150770 located 100 feet north of the intersection of Farm to Market Road (FM) 1960 and Breton Ridge Street with a published elevation of 120.92, NAVD 88, 2001 adjustment.

**TEMPORARY BENCH MARK**  
Temporary Benchmark A being a 1000 Nail in power pole along the east right-of-way of Dotson Road located +/- 350 feet north of the intersection of Hargrove Drive and Dotson Road.  
Elevation = 123.59 NAVD 88, 2001 Adjustment.

**TEMPORARY BENCH MARK**  
Temporary Benchmark B being a railroad spike in power pole along the east right-of-way of Dotson Road located +/- 530 feet north of the intersection of Hargrove Drive and Dotson Road.  
Elevation = 123.60, NAVD 88, 2001 Adjustment.

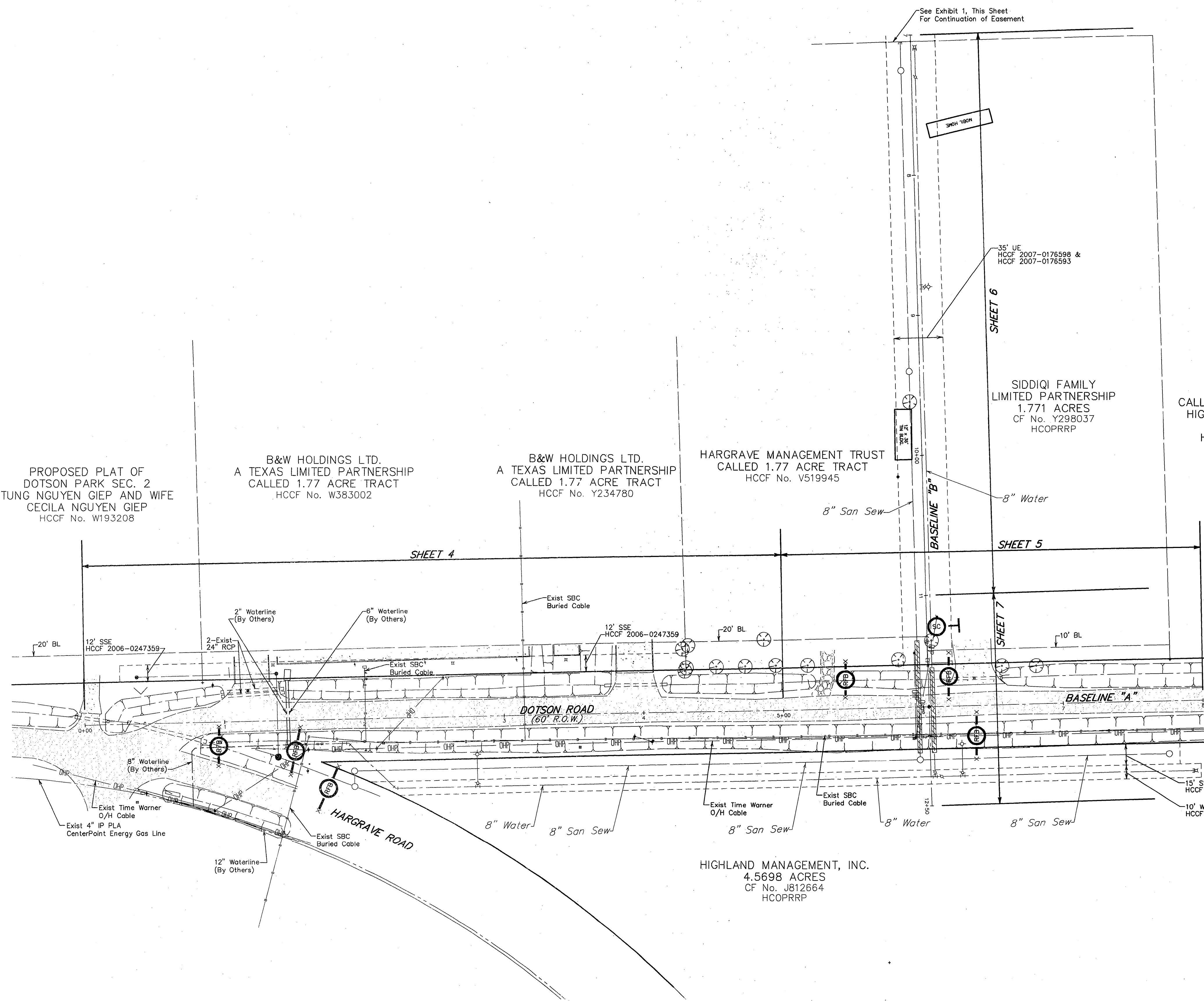


**PRIVATE UTILITY LINES SHOWN**  
AT LEAST 48 HOURS BEFORE EXCAVATING IN STREET R.O.W. OR EASEMENTS CALL THE LONE STAR NOTIFICATION 713-223-4567.

CenterPoint Energy Gas Facilities  
(Approved for crossing underground ductlines, unless otherwise noted.)  
Valid at time of review only.  
Date: 4/18/07

CenterPoint Energy Gas Facilities  
(Gas service lines are not shown)  
Date: 4/18/07

- INSTALLATION SEQUENCE**
- UTILITY CONTRACTOR:
1. Install (SC) at start of construction.
  2. Install (RFB) at designated locations.
  3. Maintain existing facilities.
  4. Hydro-Mulch Seeding
- Utility and Paving Contractor to follow all protection requirements and complete all forms as listed in bound SWPPP.



PROPOSED PLAT OF DOTSON PARK SEC. 2 TUNG NGUYEN GIEP AND WIFE CECILA NGUYEN GIEP HCCF No. W193208

B&W HOLDINGS LTD. A TEXAS LIMITED PARTNERSHIP CALLED 1.77 ACRE TRACT HCCF No. W383002

B&W HOLDINGS LTD. A TEXAS LIMITED PARTNERSHIP CALLED 1.77 ACRE TRACT HCCF No. Y234780

HARGRAVE MANAGEMENT TRUST CALLED 1.77 ACRE TRACT HCCF No. V519945

SIDDIQI FAMILY LIMITED PARTNERSHIP 1.771 ACRES CF No. Y298037 HCCPRRP

CALLED 1.7703 ACRES TRACT V HIGHLAND MANAGEMENT, INC. TO HIGHLAND TIMBERS, LTD. NOVEMBER 1, 1999 CF No. U054466

HIGHLAND MANAGEMENT, INC. 4.5698 ACRES CF No. J812664 HCCPRRP

**RECORD DRAWING**

**EROSION AND SEDIMENTATION CONTROL NOTES**

1. PRIOR TO START OF CONSTRUCTION, CONTRACTOR SHALL INSTALL EROSION AND SEDIMENTATION CONTROLS AT LOCATION SHOWN ON PLANS.
2. CONTRACTOR SHALL INSPECT ALL EROSION AND SEDIMENTATION CONTROL SYSTEMS SPECIFIED HEREIN, AT A MINIMUM OF ONCE EVERY CALENDAR DAY.
3. CONTRACTOR SHALL MAINTAIN, REPAIR AND/OR REPLACE DAMAGED EROSION AND SEDIMENTATION CONTROL SYSTEM THROUGHOUT THE DURATION OF THE CONTRACT. (NO SEPARATE PAY).
4. CONTRACTOR SHALL PROVIDE PROTECTED STORAGE AREAS FOR CHEMICALS, PAINTS, SOLVENTS, FERTILIZERS, AND OTHER POTENTIALLY TOXIC MATERIALS.
5. CONTRACTOR SHALL LOCATE FUEL/MATERIAL STORAGE AREAS AWAY FROM STORM WATER CONVEYANCE SYSTEMS. CONTRACTOR SHALL USE SILT FENCING, HAY BALES, OR BERMIS AROUND FUEL STORAGE AREAS. (NO SEPARATE PAY).
6. CONTRACTOR SHALL ADVISE OWNER IMMEDIATELY, VERBALLY, AND IN WRITING, OF ANY FUEL OR TOXIC MATERIAL SPILLS ONTO THE PROJECT/CONSTRUCTION AREA AND THE ACTION TAKEN TO REMEDY THE PROBLEM.
7. CONTRACTOR IS RESPONSIBLE FOR DISPOSING OF HIS FUELS, MATERIALS, AND CONTAMINATED EXCAVATIONS IN A LEGALLY APPROVED MANNER. (NO SEPARATE PAY).
8. CONTRACTOR IS RESPONSIBLE FOR COMPLYING WITH ALL APPLICABLE ENVIRONMENTAL LAWS.
9. CONTRACTOR IS RESPONSIBLE FOR PROVIDING ADEQUATELY MAINTAINED SANITARY FACILITIES.
10. AT COMPLETION OF THE CONTRACT, OWNER AND/OR OWNER'S REPRESENTATIVE WITH THE CONTRACTOR SHALL EXAMINE EROSION AND SEDIMENTATION CONTROL SYSTEM BEFORE RELIEVING CONTRACTOR OF HIS MAINTENANCE RESPONSIBILITIES.
11. IF EROSION AND SEDIMENTATION CONTROL SYSTEM IS EXISTING FROM PRIOR CONTRACTS, OWNER AND/OR OWNER'S REPRESENTATIVES WITH THE CONTRACTOR SHALL EXAMINE THE EXISTING EROSION AND SEDIMENTATION CONTROL SYSTEM FOR DAMAGE PRIOR TO CONTRACTOR STARTING CONSTRUCTION OF THE CONTRACT. ANY DAMAGE NOTED AT THIS TIME SHALL BE REPAIRED AT OWNER'S EXPENSE.
12. CONTRACTOR SHALL BE RESPONSIBLE FOR STREET CLEANING, ON A DAILY BASIS, ALL MUD AND DIRT DEPOSITED ON THE EXISTING PAVEMENT DUE TO HIS CONSTRUCTION ACTIVITY.
13. IF PAVING CONTRACTOR REMOVES OR PUNCTURES TIMBER GRATE TO ESTABLISH DRAINAGE, INLET MUST BE SURROUNDED BY FILTER FABRIC FENCE AS SHOWN IN DETAIL ON THIS SHEET.

**MANHOLE/INLET PROTECTION NOTES**

1. INLETS AND MANHOLES THAT ARE NOT COMPLETE AND/OR ARE SUBJECT TO CONVEYING STORM WATER FLOWS ARE TO BE PROTECTED TO PREVENT SEDIMENT FROM ENTERING THE PROPOSED OR EXISTING STORM SEWER SYSTEM.
2. PROTECTION SHALL CONSIST OF ONE LAYER OF 3x12-INCH OAK TIMBERS, ONE (1) INCH APART, COVERED WITH ONE LAYER OF WOVEN POLYPROPYLENE OR POLYESTER FILTER FABRIC (EXXON GTF 100s, PHILLIPS SUPAC 4WS(UV) OR APPROVED EQUAL) HELD IN PLACE WITH 1/2" STAPLES. TIMBERS SHALL BE HELD IN PLACE WITH TWO (2) 2x4'S NAILED SECURELY TO EACH TIMBER OVER THE FILTER FABRIC. THE FILTER FABRIC SHALL EXTEND BEYOND THE PERIMETER OF THE OAK TIMBERS AS TO ENSURE ONE (1) FOOT OF BURY BETWEEN THE MANHOLE OR INLET AND THE SURROUNDING SOIL AS SHOWN.
3. FILTER FABRIC TO BE CLEANED OR REPLACED WHEN IT CEASES TO FUNCTION PROPERLY OR AS DIRECTED BY THE ENGINEER.
4. CONTRACTOR MAY SUBMIT PLANS FOR ALTERNATE METHODS OF PROTECTION. THESE ALTERNATE METHODS MUST BE APPROVED PRIOR TO USE IN THE FIELD.
5. NO SEPARATE PAYMENT SHALL BE MADE FOR INLET AND MANHOLE PROTECTION. INCLUDE THE COST IN THE UNIT PRICE FOR THE INLETS AND MANHOLES.



NO.	DATE	REVISIONS	APP.
4/11/07		SHEET REPLACED	JPC

HARRIS COUNTY M.U.D. No. 191  
HARRIS COUNTY, TEXAS

**JC JONES & CARTER, INC.**  
ENGINEERS • PLANNERS • SURVEYORS  
6335 Gulton Dr., Suite 100 Houston, Texas 77061 (713) 777-5337

**HAMMETT PROPERTY**  
**STORM WATER POLLUTION PREVENTION PLAN**

NOTE: CITY SIGNATURES VALID FOR ONE YEAR ONLY AFTER DATE OF SIGNATURES.

**CITY OF HOUSTON**  
DEPARTMENT OF PUBLIC WORKS AND ENGINEERING

WATER	TRAFFIC & TRANSPORTATION
WASTEWATER	STORM WATER QUALITY
STORM	FACILITIES
STREET & BRIDGE	

FILE NO:	FOR CITY OF HOUSTON USE ONLY
JOB NO: 05386-001	CITY DWG NO.
DATE: APRIL 2007	
DGN. BY: AS	
DWG. BY: AHS	
SCALE: AS SHOWN	
SHEET No. 8 OF 13	

